

Duo pour saxophone ténor et violon .

Commande N°1 .

♩ = 100,000000

Andante. Tranquille .

Tenor Saxophone

Tous droits réservés .

Violin

3

Ten. Sax.

Vln.

6

Ten. Sax.

Vln.

9

Ten. Sax.

Vln.

12

Ten. Sax.

Vln.

Chauveau.f.Bruno .
Pour violoniste d'ŷbutant .
Chauveau.f.Bruno .
Pour violoniste d'ŷbutant .

14

Ten. Sax.

Vln.

18 ♩ = 50,000000 ♪ = 100,000000

Ten. Sax.

Vln.

21

Ten. Sax.

Vln.

24

Ten. Sax.

Vln.

27

Ten. Sax.

Vln.

30

Ten. Sax.

Vln.

32

Ten. Sax.

Vln.

Detailed description: This musical system covers measures 32 and 33. The Tenor Saxophone part (top staff) begins with a treble clef and a key signature of one flat. It features a melodic line with eighth and sixteenth notes, including some beamed sixteenth notes. The Violin part (bottom staff) provides a harmonic accompaniment with quarter and eighth notes. The system concludes with a double bar line.

34

Ten. Sax.

Vln.

♩ = 50,000000

Detailed description: This musical system covers measures 34 and 35. The Tenor Saxophone part (top staff) features a melodic line with quarter and eighth notes. The Violin part (bottom staff) provides a harmonic accompaniment with quarter notes and a half note. A tempo marking '♩ = 50,000000' is positioned above the Tenor Saxophone staff. The system concludes with a double bar line.

Duo pour saxophone ténor et violon .

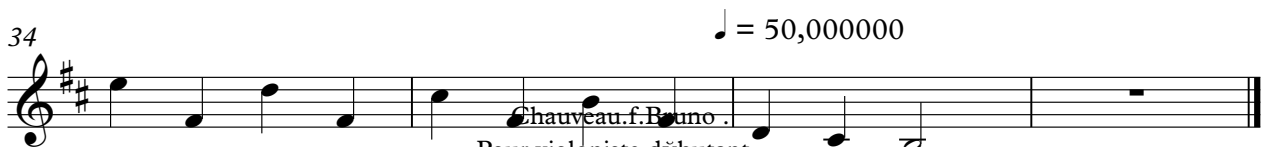
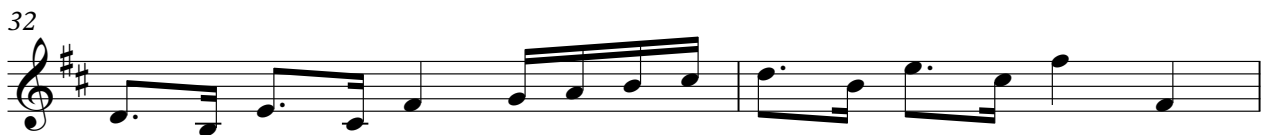
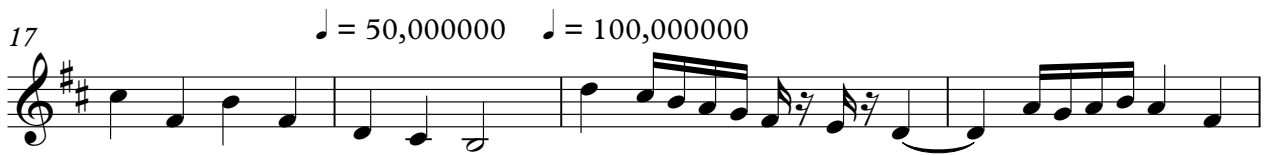
Tenor Saxophone

Commande N°1 .

♩ = 100,000000

Andante. Tranquille .

Tous droits réservés .



Chauveau.f.Bruno .

Pour violoniste débutant .

Chauveau.f.Bruno .

Pour violoniste débutant .

Violin Duo pour saxophone ténor et violon .
Commande N°1 .

♩ = 100,000000



7



13

♩ = 50,000000 ♩ = 100,000000



20

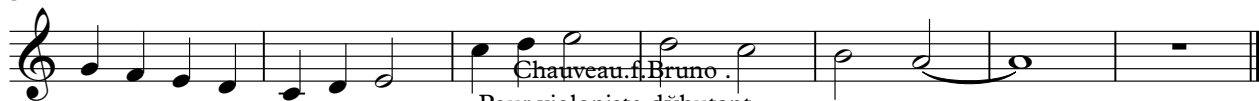


26



31

♩ = 50,000000



Chauveau.f.Bruno .
Pour violoniste d'ŷbutant .
Chauveau.f.Bruno .
Pour violoniste d'ŷbutant .