

MONLMOU_Jean-Marie_Bienvenu-Dinyegrave

♩ = 100,000000

Alto

Quintus

Solo

This system contains three staves. The top staff is labeled 'Alto' and contains a melodic line in 2/4 time with various notes and rests. The middle staff is labeled 'Quintus' and the bottom staff is labeled 'Solo'; both contain whole rests throughout the measures.

10

A.

Q.

This system contains two staves. The top staff is labeled 'A.' and contains a melodic line with chords. The bottom staff is labeled 'Q.' and contains whole rests.

18

A.

Q.

This system contains two staves. The top staff is labeled 'A.' and contains a melodic line with chords. The bottom staff is labeled 'Q.' and contains whole rests.

26

A.

Q.

34

A.

Q.

Solo

42

A.

Q.

Solo

50

A.

Q.

Solo

58

A.

Q.

Solo

65

A.

Q.

Solo

73

A.

Q.

Solo

This system of music covers measures 73 to 78. It features three staves: A. (Acoustic guitar), Q. (Quadrant guitar), and Solo. The A. staff contains a melodic line with various chords and intervals. The Q. staff provides a rhythmic accompaniment with chords and single notes. The Solo staff features a melodic line with a mix of eighth and sixteenth notes, including some chromatic movement.

79

A.

Q.

Solo

This system of music covers measures 79 to 86. It features three staves: A. (Acoustic guitar), Q. (Quadrant guitar), and Solo. The A. staff continues the melodic line with chords and intervals. The Q. staff provides a rhythmic accompaniment with chords and single notes. The Solo staff features a melodic line with a mix of eighth and sixteenth notes, including some chromatic movement.

87

A.

Q.

Solo

This system of music covers measures 87 to 94. It features three staves: A. (Acoustic guitar), Q. (Quadrant guitar), and Solo. The A. staff continues the melodic line with chords and intervals. The Q. staff provides a rhythmic accompaniment with chords and single notes. The Solo staff features a melodic line with a mix of eighth and sixteenth notes, including some chromatic movement.

95

A.

Q.

Solo

103

A.

Q.

Solo

111

A.

Q.

Solo

119

A.



Q.



8

Detailed description: This system contains two staves. The upper staff (A.) is in treble clef and contains four measures of music with various chords and melodic lines. The lower staff (Q.) is in treble clef and contains four measures of music, primarily consisting of chords and some single notes. A small '8' is written below the first measure of the Q. staff.

127

A.



Q.



Solo



8

Detailed description: This system contains three staves. The upper staff (A.) and middle staff (Q.) are in treble clef and contain four measures of music. The lower staff (Solo) is in treble clef and contains four measures of music, featuring a melodic line. A small '8' is written below the first measure of the Q. staff.

134

A.



Q.



Solo



8

Detailed description: This system contains three staves. The upper staff (A.) is in treble clef and contains four measures of music. The middle staff (Q.) is in treble clef and contains four measures of music. The lower staff (Solo) is in treble clef and contains four measures of music. A small '8' is written below the first measure of the Q. staff.

141

A.

Q.

Solo

148

A.

Q.

Solo

156

A.

Q.

Solo

164

A.

Q.

Solo

171

A.

Q.

Solo

179

A.

Q.

Solo

187

A.

Q.

Solo

196

A.

Q.

Solo

204

A.

Q.

212

A.

Q.

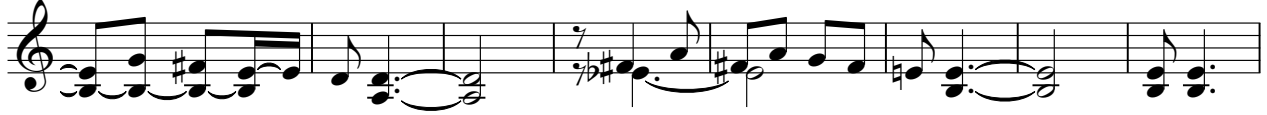
219

A.

Q.

Detailed description: The image shows two musical staves, A and Q, for measures 219-222. Staff A (top) is in treble clef and contains a melodic line with a 7th fret barre. Staff Q (bottom) is in treble clef and contains a bass line with a 7th fret barre. Both staves end with a double bar line. A large vertical line on the left side of the page separates the two staves.

82



90



98



106



114



122



130



138



146



154



MONLMOU_Jean-Marie_Bienvenu-Dinyegrave

Quintus

♩ = 100,000000

16

25

36

47

58

69

80

91

101

111

V.S.

MONLMOU_Jean-Marie_Bienvenu-Dinyegrave

Solo

♩ = 100,000000

40

47

8

62

73

82

91

100

107

16

