

per 2 chitarre

♩ = 100,000000

Kora

Kora

7

Kora

Kora

12

Kora

Kora

15

Kora

Kora

19

Kora

Kora

Copyright ©

23

Kora

Kora

Detailed description: This system contains measures 23 through 26. The upper staff (Kora) features a melodic line with eighth and quarter notes, including a half-note rest in measure 25. The lower staff (Kora) provides a rhythmic accompaniment with eighth-note chords and single notes.

27

Kora

Kora

Detailed description: This system contains measures 27 through 31. The upper staff (Kora) has a melodic line with eighth notes and rests, featuring several flats. The lower staff (Kora) has a complex accompaniment with eighth-note chords and rests.

32

Kora

Kora

Detailed description: This system contains measures 32 through 37. The upper staff (Kora) has a melodic line with eighth notes and rests, including a half-note rest in measure 32. The lower staff (Kora) has a rhythmic accompaniment with eighth-note chords.

38

Kora

Kora

Detailed description: This system contains measures 38 through 42. The upper staff (Kora) has a melodic line with eighth notes and rests. The lower staff (Kora) has a rhythmic accompaniment with eighth-note chords.

43

Kora

Kora

Detailed description: This system contains measures 43 through 46. The upper staff (Kora) has a melodic line with eighth notes and rests. The lower staff (Kora) has a rhythmic accompaniment with eighth-note chords.

47

Kora

Kora

Detailed description: This system contains measures 47 through 50. The upper staff (Kora) has a melodic line with eighth notes and rests. The lower staff (Kora) has a rhythmic accompaniment with eighth-note chords. The piece concludes with a double bar line and repeat signs.

51 ♩ = 100,000000

53 ♩ = 100,000000

56

59

62

65

68 $\text{♩} = 100,000000$

Kora

Kora

73

Kora

Kora

77

Kora

Kora

81 $\text{♩} = 100,000000$

Kora

Kora

86

Kora

Kora

90

Kora

Kora

124

Kora

Kora

129

Kora

Kora

134

Kora

$\text{♩} = 180,000,000$

Kora

139

Kora

Kora

142

Kora

Kora


146

Kora

Kora

149

Kora



Musical notation for Kora part 149, top staff. It begins with a treble clef and a key signature of one flat. The melody starts with a quarter note G4, followed by eighth notes A4, Bb4, and C5. A triplet of eighth notes (D5, E5, F5) is marked with a '3' and a bracket. The staff ends with a quarter rest.

Kora



Musical notation for Kora part 149, bottom staff. It begins with a treble clef and a key signature of one flat. The accompaniment consists of a steady eighth-note bass line (C4, D4, E4, F4, G4, A4, Bb4, C5) and a series of chords in the right hand.

152

Kora



Musical notation for Kora part 152, top staff. It begins with a treble clef and a key signature of one flat. The melody starts with a quarter note G4, followed by eighth notes A4, Bb4, and C5. A triplet of eighth notes (D5, E5, F5) is marked with a '3' and a bracket. The staff ends with a quarter rest.

Kora



Musical notation for Kora part 152, bottom staff. It begins with a treble clef and a key signature of one flat. The accompaniment consists of a steady eighth-note bass line (C4, D4, E4, F4, G4, A4, Bb4, C5) and a series of chords in the right hand.

155

Kora



Musical notation for Kora part 155, top staff. It begins with a treble clef and a key signature of one flat. The melody consists of a series of chords: G4-A4-Bb4, C5, G4-A4-Bb4, C5, G4-A4-Bb4, C5, G4-A4-Bb4, C5.

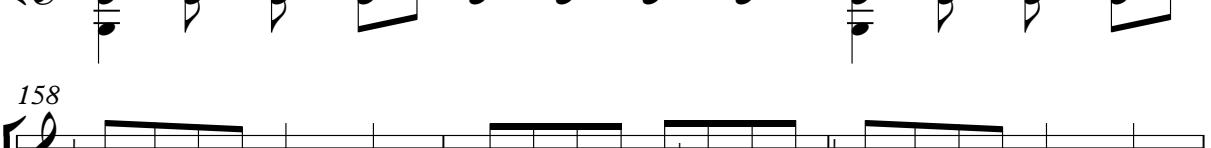
Kora



Musical notation for Kora part 155, bottom staff. It begins with a treble clef and a key signature of one flat. The accompaniment consists of a steady eighth-note bass line (C4, D4, E4, F4, G4, A4, Bb4, C5) and a series of chords in the right hand.

158

Kora



Musical notation for Kora part 158, top staff. It begins with a treble clef and a key signature of one flat. The melody consists of a series of chords: G4-A4-Bb4, C5, G4-A4-Bb4, C5, G4-A4-Bb4, C5, G4-A4-Bb4, C5.

Kora



Musical notation for Kora part 158, bottom staff. It begins with a treble clef and a key signature of one flat. The accompaniment consists of a steady eighth-note bass line (C4, D4, E4, F4, G4, A4, Bb4, C5) and a series of chords in the right hand.

161

Kora



Musical notation for Kora part 161, top staff. It begins with a treble clef and a key signature of one flat. The melody consists of a series of chords: G4-A4-Bb4, C5, G4-A4-Bb4, C5, G4-A4-Bb4, C5, G4-A4-Bb4, C5.

Kora



Musical notation for Kora part 161, bottom staff. It begins with a treble clef and a key signature of one flat. The accompaniment consists of a steady eighth-note bass line (C4, D4, E4, F4, G4, A4, Bb4, C5) and a series of chords in the right hand.

164

Kora



Musical notation for Kora part 164, top staff. It begins with a treble clef and a key signature of one flat. The melody consists of a series of chords: G4-A4-Bb4, C5, G4-A4-Bb4, C5, G4-A4-Bb4, C5, G4-A4-Bb4, C5.

Kora



Musical notation for Kora part 164, bottom staff. It begins with a treble clef and a key signature of one flat. The accompaniment consists of a steady eighth-note bass line (C4, D4, E4, F4, G4, A4, Bb4, C5) and a series of chords in the right hand.

167

Kora

Kora

170

Kora

Kora

173

♩ = 180,000717 ♩ = 180,000717 ♩ = 180,000717

Kora

Kora

177

♩ = 180,000717 ♩ = 180,000717 ♩ = 180,000717

Kora

Kora

180

♩ = 180,000717 ♩ = 180,000717 ♩ = 180,000717

Kora

Kora

183

♩ = 180,000717 ♩ = 180,000717 ♩ = 180,000717

Kora

Kora

186

Kora

Kora

Detailed description: This system contains two staves of music for measures 186, 187, and 188. The top staff is labeled 'Kora' and the bottom staff is also labeled 'Kora'. The music is in a key with one sharp (F#) and one flat (Bb). The top staff features a melodic line with eighth and quarter notes, while the bottom staff provides a harmonic accompaniment with chords and moving lines.

189

Kora

Kora

Detailed description: This system contains two staves of music for measures 189 and 190. The top staff is labeled 'Kora' and the bottom staff is also labeled 'Kora'. The music continues in the same key signature. The top staff has a more active melodic line with eighth notes, and the bottom staff continues the accompaniment.

191

Kora

Kora

Detailed description: This system contains two staves of music for measures 191, 192, and 193. The top staff is labeled 'Kora' and the bottom staff is also labeled 'Kora'. The music continues in the same key signature. The top staff has a more active melodic line with eighth notes, and the bottom staff continues the accompaniment.

194

Kora

Kora

$\text{♩} = 180,000717$ $\text{♩} = 180,000717$

Detailed description: This system contains two staves of music for measures 194, 195, and 196. The top staff is labeled 'Kora' and the bottom staff is also labeled 'Kora'. The music continues in the same key signature. The top staff has a more active melodic line with eighth notes, and the bottom staff continues the accompaniment. A tempo marking $\text{♩} = 180,000717$ is placed below the staves.

197

Kora

Kora

$\text{♩} = 180,000717$ $\text{♩} = 180,000717$ $\text{♩} = 180,000717$

Detailed description: This system contains two staves of music for measures 197, 198, 199, and 200. The top staff is labeled 'Kora' and the bottom staff is also labeled 'Kora'. The music continues in the same key signature. The top staff has a more active melodic line with eighth notes, and the bottom staff continues the accompaniment. A tempo marking $\text{♩} = 180,000717$ is placed below the staves.

200

Kora

Kora

$\text{♩} = 180,000717$ $\text{♩} = 180,000717$ $\text{♩} = 180,000717$

Detailed description: This system contains two staves of music for measures 200, 201, 202, and 203. The top staff is labeled 'Kora' and the bottom staff is also labeled 'Kora'. The music continues in the same key signature. The top staff has a more active melodic line with eighth notes, and the bottom staff continues the accompaniment. A tempo marking $\text{♩} = 180,000717$ is placed below the staves.

10

203 ♯ = 180,000717 ♯ = 180,000717 ♯ = 180,000717

206

209 ♯ = 180,000717

212 ♯ = 180,000717

215

217

219

Kora

Kora

$\text{♩} = 180,000717$

221

Kora

Kora

$\text{♩} = 235,690628$

224

Kora

Kora

228

Kora

Kora

per 2 chitarre

Kora

♩ = 100,000000

2

9

15

20

24

29

35

41

47

51

♩ = 100,000000

♩ = 100,000000

Copyright ©

V.S.

Kora

54

58

62

66

♩ = 100,000000

70

75

79

♩ = 100,000000

85

90

94

♩ = 66,666,000 or 100,000000

Kora

102

109

117

124

131

138

142

146

150

154

V.S.

158

162

166

170

173

♩ = 180,000717 ♩ = 180,000717 ♩ = 180,000717

177

♩ = 180,000717 ♩ = 180,000717 ♩ = 180,000717

180

♩ = 180,000717 ♩ = 180,000717 ♩ = 180,000717

183

♩ = 180,000717 ♩ = 180,000717 ♩ = 180,000717

186

190

Musical score for Kora, measures 193-224. The score is written in treble clef with a key signature of one sharp (F#). The tempo is marked as $\text{♩} = 180,000717$. The score consists of ten staves of music. Measures 193-196 are a single melodic line. Measures 197-200 are a complex rhythmic pattern with changing time signatures (3/4, 4/4, 3/4, 4/4). Measures 201-204 continue the rhythmic pattern with time signatures 4/4, 3/4, 4/4, and 3/4. Measures 205-207 are a single melodic line with a time signature of 5/4. Measures 208-210 are a single melodic line with a time signature of 4/4. Measures 211-213 are a single melodic line with a time signature of 5/4. Measures 214-216 are a single melodic line. Measures 217-219 are a single melodic line. Measures 220-223 are a single melodic line with a time signature of 4/4. Measure 224 is a single melodic line with a time signature of 3/4. The score includes various musical notations such as notes, rests, and accidentals.

6

Kora

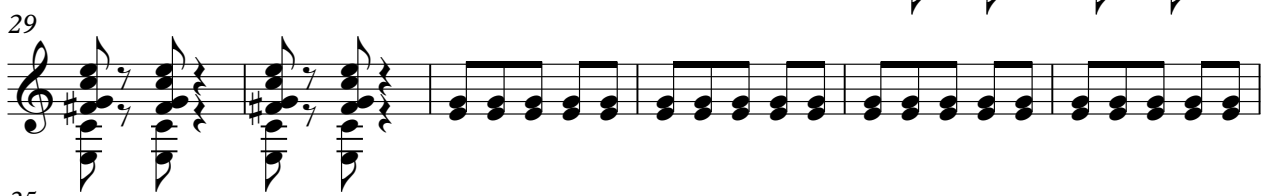
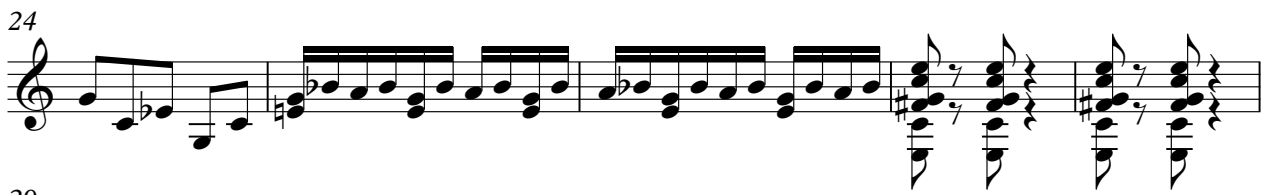
228

Musical score for Kora, measures 228-231. The score is written on a grand staff with a treble clef on the upper staff and a bass clef on the lower staff. Measure 228 contains a melodic line in the treble clef and a bass line in the bass clef. Measure 229 features a sixteenth-note scale in the bass clef, marked with a '6' above the staff. Measure 230 continues the scale, marked with a '3' above the staff. Measure 231 concludes the phrase with a final note in the bass clef, marked with a '6' below the staff and a '3' above the staff. The piece ends with a double bar line.

Kora

per 2 chitarre

♩ = 100,000000



Copyright ©

V.S.

2

Kora

♩ = 100,000000

49

52

55

59

63

67

73

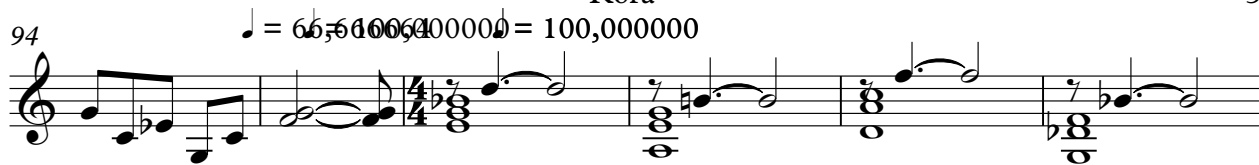
80

86

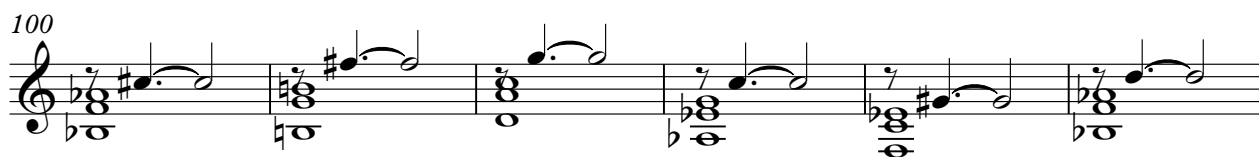
90

Kora

94 $\text{♩} = 66,6100000 = 100,000000$



100



106



111



116



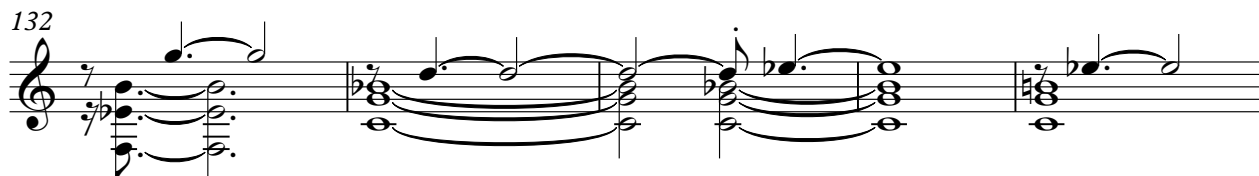
121



127



132



137 $\text{♩} = 180,000000$



141



V.S.

145

149

152

155

158

161

165

168

171

175

$\text{♩} = 180,000717$

$\text{♩} = 180,000717$ $\text{♩} = 180,000717$ $\text{♩} = 180,000717$ $\text{♩} = 180,000717$

The image shows a musical score for a Kora instrument. It consists of ten staves of music, each starting with a measure number. The notation is in treble clef with a key signature of one flat (B-flat). The music features a mix of eighth and sixteenth notes, often beamed together, and rests. There are several repeat signs (double bar lines with dots) and some measures with a 3/4 time signature. A tempo marking of $\text{♩} = 180,000717$ is present. The score ends with a 4/4 time signature.

179 ♩ = 180,000717 ♩ = 180,000717 ♩ = 180,000717 ♩ = 180,000717

183 ♩ = 180,000717 ♩ = 180,000717 ♩ = 180,000717

186

189

192

195

198 ♩ = 180,000717 ♩ = 180,000717 ♩ = 180,000717

201 ♩ = 180,000717 ♩ = 180,000717 ♩ = 180,000717

204 ♩ = 180,000717 ♩ = 180,000717

207 ♩ = 180,000717

210



213 ♩ = 180,000717



216



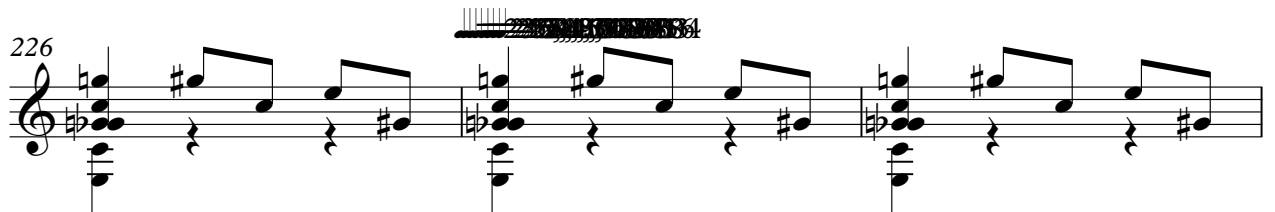
219 ♩ = 180,000717



222 ♩ = 235,690628



226



229

