

PREMIER CYCNE

$\text{♩} = 100,000000$

flute

oboe

classical guitar

$\text{♩} = 100,000000$

violin 1

Violin 2

Viola

Violoncello

The image displays a musical score for the piece 'Premier Cycne'. The score is arranged in a system with seven staves. The top two staves are for flute and oboe, both in treble clef. The flute part begins with a tempo marking of 100,000,000. The oboe part consists of rests. The third staff is for classical guitar, in treble clef, with a rhythmic pattern of eighth notes. The bottom four staves are for violin 1, violin 2, viola, and violoncello, all in bass clef. The violin 1 part also has a tempo marking of 100,000,000. The violin 2, viola, and violoncello parts have a simple harmonic accompaniment of quarter notes.

7

flute

classical guitar

violin 1

Violin 2

Viola

Violoncello

12

flute

classical guitar

violin 1

Violin 2

Viola

Violoncello

18

flute

classical guitar

violin 1

Violin 2

Viola

Violoncello

23

flute

classical guitar

violin 1

Violin 2

Viola

Violoncello

28

flute

violin 1

Violin 2

Viola

Violoncello

33

flute

classical guitar

violin 1

Violin 2

Viola

Violoncello

39

flute

classical guitar

violin 1

Violin 2

Viola

Violoncello

44

flute

classical guitar

violin 1

Violin 2

Viola

Violoncello

50

flute

violin 1

Violin 2

Viola

Violoncello

55

flute

violin 1

Violin 2

Viola

Violoncello

60

flute

violin 1

Violin 2

Viola

Violoncello

Detailed description: This system of musical notation covers measures 60 through 65. The flute part begins with a melodic line in measure 60, featuring a half note with a slur and a dotted quarter note. The string quartet (Violin 1, Violin 2, Viola, and Violoncello) provides harmonic support with various note values and rests across the six measures.

66

flute

violin 1

Violin 2

Viola

Violoncello

Detailed description: This system of musical notation covers measures 66 through 71. The flute part features a triplet of eighth notes in measure 67 and a half note with a slur in measure 71. The string quartet continues with harmonic accompaniment, including a triplet of eighth notes in the Violoncello part in measure 67.

72

oboe

classical guitar

violin 1

Violin 2

Viola

Violoncello

78

oboe

classical guitar

violin 1

Violin 2

Viola

Violoncello

83

oboe

classical guitar

violin 1

Violin 2

Viola

Violoncello

89

oboe

classical guitar

violin 1

Violin 2

Viola

Violoncello

94

oboe

classical guitar

violin 1

Violin 2

Viola

Violoncello

99

oboe

classical guitar

violin 1

Violin 2

Viola

Violoncello

104 $\text{♩} = 100,000000$ $\text{♩} = 100,000000$ 11

oboe

classical guitar

violin 1

Violin 2

Viola

Violoncello

108

oboe

classical guitar

violin 1

Violin 2

Viola

Violoncello

113

oboe

classical guitar

violin 1

Violin 2

Viola

Violoncello

118

oboe

classical guitar

violin 1

Violin 2

Viola

Violoncello

123

oboe

classical guitar

violin 1

Violin 2

Viola

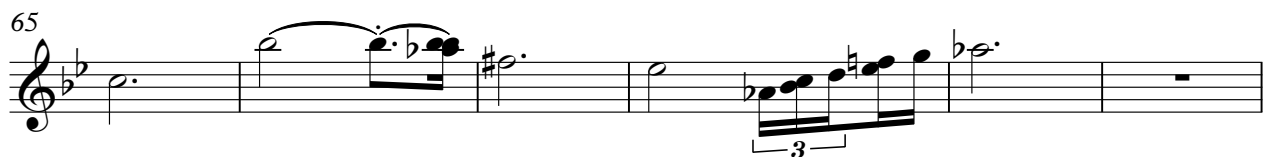
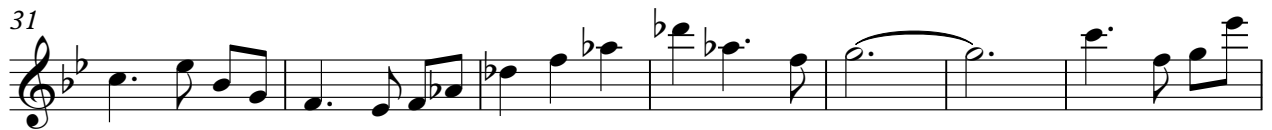
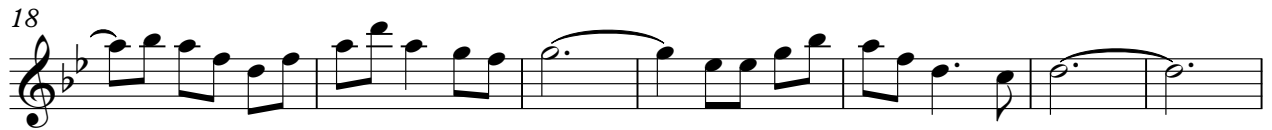
Violoncello

The image shows a page of a musical score for measures 123 to 127. The instruments are oboe, classical guitar, violin 1, violin 2, viola, and violoncello. The oboe part starts with a melodic line in measure 123, followed by a slur over measures 124 and 125. The classical guitar part has a rhythmic accompaniment with a slur over measures 124 and 125. The violin 1 part has a melodic line with a slur over measures 124 and 125. The violin 2 part has a melodic line with a slur over measures 124 and 125. The viola part has a melodic line with a slur over measures 124 and 125. The violoncello part has a melodic line with a slur over measures 124 and 125.

PREMIER CYCNE

flute

♩ = 100,000000



2

flute

71

$\bullet = 100,000000 = 100,000000$

34

22

A musical staff in treble clef with a key signature of one flat (B-flat). The staff begins with a treble clef and a B-flat key signature. The first measure contains a whole note G4. The second measure contains a whole rest, with the number '34' written above it. The third measure contains a whole rest, with the number '22' written above it. The staff ends with a double bar line.

PREMIER CYCNE

oboe

♩ = 100,000000

76

82

90

97

104

♩ = 100,000000 ♩ = 100,000000

110

117

122

2

Detailed description: This image shows a page of musical notation for the oboe part of 'Premier Cycne'. The score is written on a single staff in treble clef with a key signature of one flat (B-flat). The tempo is marked as ♩ = 100,000000. The piece is in 3/4 time. The score is divided into measures, with measure numbers 76, 82, 90, 97, 104, 110, 117, and 122 indicated. Measure 104 features a change in time signature to 4/4, and measure 110 features a change to 3/4. The notation includes various note values, rests, and dynamic markings such as 'f' and '2'.

PREMIER CYCNE

classical guitar

$\text{♩} = 100,000000$

9

17

25

37

43

72

79

87

95

V.S.

2

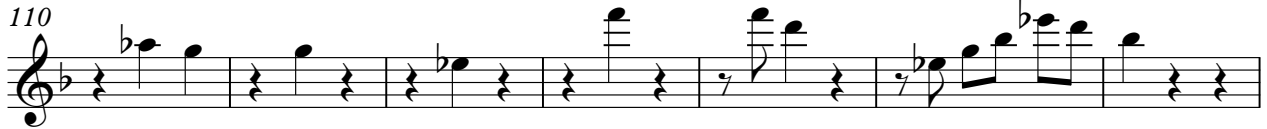
classical guitar

♩ = 100,000000 ♩ = 100,000000

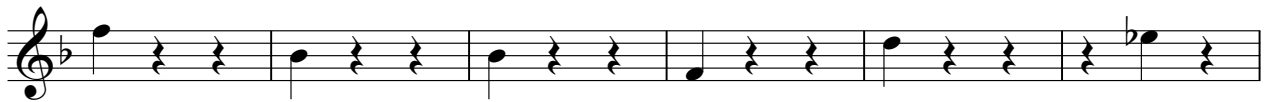
103



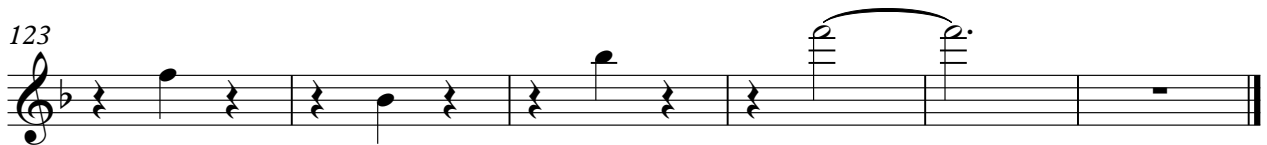
110



117



123



PREMIER CYCNE

violin 1

♩ = 100,000000



80



88



96



104

♩ = 100,000000 ♩ = 100,000000



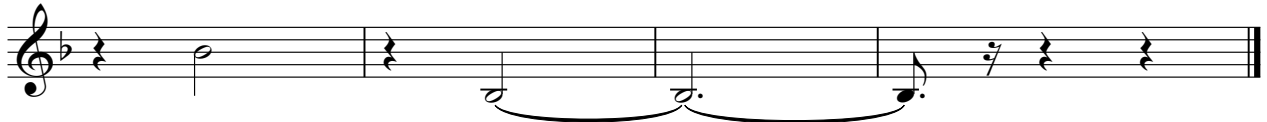
112



120



125



PREMIER CYCNE

Violin 2

♩ = 100,000000



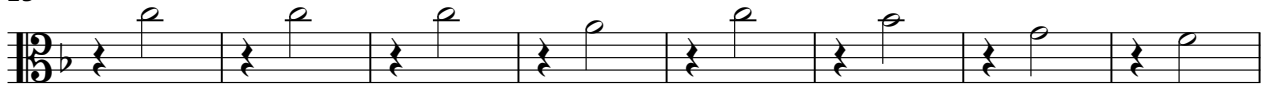
9



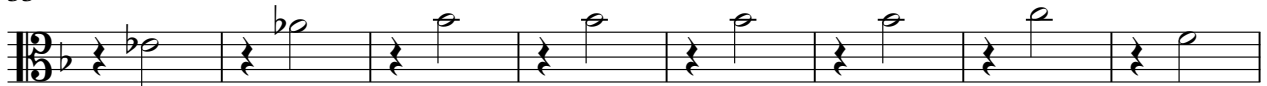
17



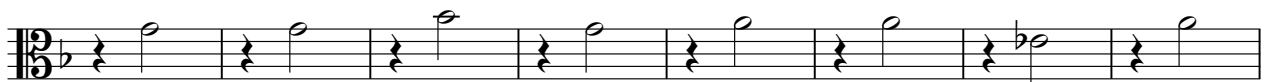
25



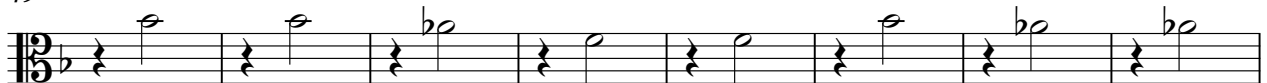
33



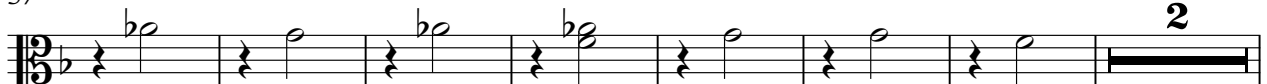
41



49



57



2

PREMIER CYCNE

Viola

♩ = 100,000000



9



17



25



33



41



49



57

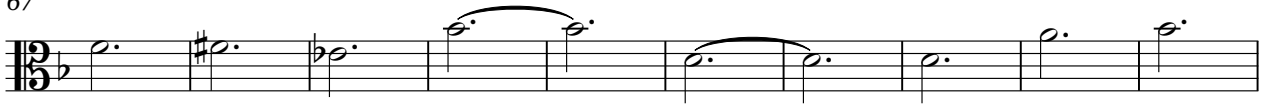


3

2

Viola

67



77



85



93

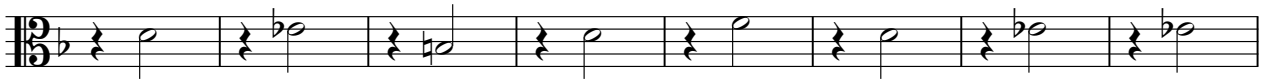


101

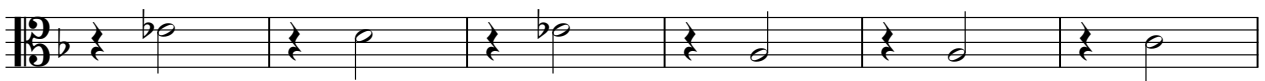
♩ = 100,000000 ♩ = 100,000000



109



117



123



PREMIER CYCNE

Violoncello

♩ = 100,000000



12



23



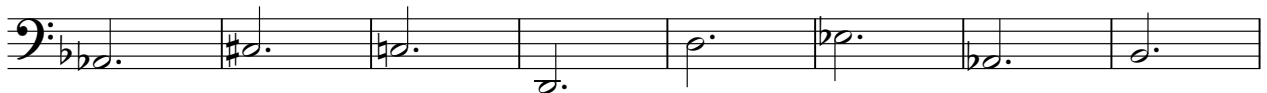
34



45



56



64



4

2

Violoncello

74



85



96



106 ♩ = 100,000000 ♩ = 100,000000



116



123

