

# Knight\_Tim-Moorland\_March

$\text{♩} = 144,000229$

Trumpet

Acoustic Grand Piano

4

Trumpet

Acoustic Grand Piano

7

Trumpet

Acoustic Grand Piano

10

Trumpet

Acoustic Grand Piano

13

Trumpet

Acoustic Grand Piano

17

Trumpet

Acoustic Grand Piano

20

Trumpet

Acoustic Grand Piano

23

Trumpet

Acoustic Grand Piano

26

Trumpet

Acoustic Grand Piano

30

Trumpet

Acoustic Grand Piano

33

Trumpet

Acoustic Grand Piano

37

Trumpet

Acoustic Grand Piano

41

Trumpet

Acoustic Grand Piano

45

Trumpet

Acoustic Grand Piano

49

Acoustic Grand Piano

53

Trumpet

Acoustic Grand Piano

56

Trumpet

Acoustic Grand Piano

59

Trumpet

Acoustic Grand Piano

62

Trumpet

Acoustic Grand Piano

65

Trumpet

Acoustic Grand Piano

68

Trumpet

Acoustic Grand Piano

71

Trumpet

Acoustic Grand Piano

74

Trumpet

Acoustic Grand Piano

78

Trumpet

Acoustic Grand Piano

The image displays a musical score for two instruments: Trumpet and Acoustic Grand Piano. The score is organized into four systems, each containing two staves. The first system (measures 62-64) shows the Trumpet playing a melodic line with eighth and quarter notes, while the Acoustic Grand Piano provides a harmonic accompaniment with chords and moving bass lines. The second system (measures 65-67) features the Trumpet with rests and a few notes, and the Acoustic Grand Piano continuing its accompaniment with more complex chordal textures. The third system (measures 68-70) has the Trumpet playing a more active melodic line, and the Acoustic Grand Piano providing a steady accompaniment. The fourth system (measures 71-73) shows the Trumpet with a melodic phrase, and the Acoustic Grand Piano with a more active bass line. The fifth system (measures 74-76) has the Trumpet with rests and a few notes, and the Acoustic Grand Piano continuing its accompaniment. The sixth system (measures 77-78) shows the Trumpet playing a melodic line, and the Acoustic Grand Piano providing a harmonic accompaniment. The score is written in a key signature of one flat (B-flat) and a common time signature (C).

81

Trumpet

Acoustic Grand Piano

Detailed description: This system covers measures 81 to 83. The Trumpet part (top staff) begins with a dotted quarter note on G4, followed by eighth notes A4, B4, C5, B4, A4, and a quarter rest. The Acoustic Grand Piano part (bottom staff) features a complex accompaniment with chords and moving lines in both hands, including a descending eighth-note line in the right hand.

84

Trumpet

Acoustic Grand Piano

Detailed description: This system covers measures 84 to 87. The Trumpet part continues with eighth notes D5, E5, F5, G5, F5, E5, and a quarter rest. The Acoustic Grand Piano part has a more active accompaniment with chords and eighth-note patterns in both hands.

88

Trumpet

Acoustic Grand Piano

Detailed description: This system covers measures 88 to 90. The Trumpet part has a quarter rest in measure 88, then eighth notes G4, A4, B4, C5, B4, A4, and a quarter rest. The Acoustic Grand Piano part features a rhythmic accompaniment with chords and eighth-note patterns.

91

Trumpet

Acoustic Grand Piano

Detailed description: This system covers measures 91 to 93. The Trumpet part starts with a quarter rest, then eighth notes G4, A4, B4, C5, B4, A4, and a quarter rest. The Acoustic Grand Piano part has a steady accompaniment with chords and eighth-note patterns.

94

Trumpet

Acoustic Grand Piano

Detailed description: This system covers measures 94 to 96. The Trumpet part has a whole rest in measure 94, then a whole note G4 in measure 95, and a whole rest in measure 96. The Acoustic Grand Piano part features a melodic line in the right hand and a bass line in the left hand, with some grace notes.

97

Trumpet

Acoustic Grand Piano

Detailed description: This system covers measures 97 to 99. The Trumpet part has eighth notes G4, A4, B4, C5, B4, A4, and a quarter rest. The Acoustic Grand Piano part has a melodic line in the right hand and a bass line in the left hand, with some grace notes.

100

Trumpet

The Trumpet part consists of four measures. Measure 100 starts with a quarter rest, followed by a quarter note G4. Measure 101 contains a dotted quarter note G4, an eighth note F4, and a quarter note E4. Measure 102 has a half note D4. Measure 103 is a whole rest. The staff ends with a double bar line.

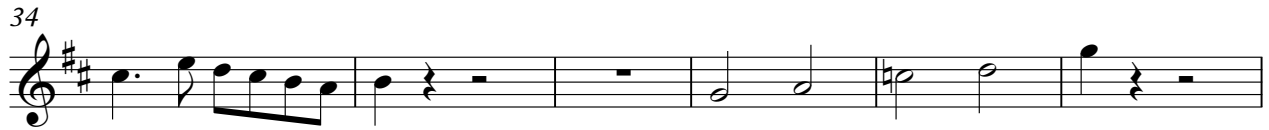
Acoustic Grand Piano

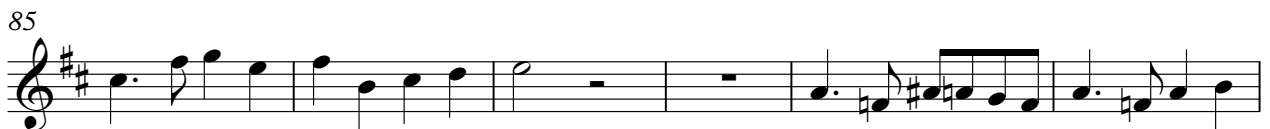
The Acoustic Grand Piano part consists of four measures. Measure 100 has a quarter note G4 in the right hand and a quarter note G2 in the left hand. Measure 101 has a quarter note G4 in the right hand and a quarter note F2 in the left hand. Measure 102 has a quarter note E4 in the right hand and a quarter note E2 in the left hand. Measure 103 has a whole rest in the right hand and a whole note chord (D2, G2, B1) in the left hand. The staff ends with a double bar line.

Trumpet

# Knight\_Tim-Moorland\_March

♩ = 144,000229







# Knight\_Tim-Moorland\_March

Acoustic Grand Piano

♩ = 144,000229

The image displays a musical score for the piece "Knight\_Tim-Moorland\_March" on Acoustic Grand Piano. The score is written in 4/4 time and consists of ten staves of music. The tempo is marked as ♩ = 144,000229. The key signature is one flat (B-flat). The score begins with a treble clef and a 4/4 time signature. The first staff contains a triplet of eighth notes. The second staff starts at measure 6. The third staff starts at measure 11. The fourth staff starts at measure 16. The fifth staff starts at measure 21. The sixth staff starts at measure 26. The seventh staff starts at measure 31. The eighth staff starts at measure 37. The ninth staff starts at measure 43. The tenth staff starts at measure 49. The score concludes with a double bar line and the initials "V.S." at the bottom right.

V.S.

Musical score for Acoustic Grand Piano, page 2, measures 54-99. The score is written in treble clef with a key signature of one flat (B-flat). The music features a complex texture with multiple voices, including a prominent melodic line in the upper register and a dense accompaniment in the lower register. A triplet of eighth notes is marked above measure 57. The piece concludes with a final chord in measure 99.

54

59

64

69

74

79

84

90

95

99