

Richter_Helmut-English_Dance_for_shining_People

♩ = 125,000000

snare

Drums

5

snare

Drums

Guitar

Flute or Guitar

8

Drums

Guitar

Flute or Guitar

Guitar

Detailed description: This system contains measures 8, 9, and 10. The Drums part features a simple snare drum pattern on the 2nd and 4th beats of each measure. The first Guitar part (treble clef) plays a continuous eighth-note pattern. The Flute or Guitar part consists of two staves: the upper staff (treble clef) plays eighth notes, and the lower staff (bass clef) has rests in measures 8 and 9, followed by eighth notes in measure 10. The second Guitar part (bass clef) plays eighth notes, including a sharp sign on the second measure.

11

Drums

Guitar

Flute or Guitar

Guitar

Detailed description: This system contains measures 11, 12, and 13. The Drums part continues with the snare drum pattern on 2 and 4. The first Guitar part (treble clef) maintains the eighth-note pattern. The Flute or Guitar part has two staves: the upper staff (treble clef) has rests in measures 11 and 12, followed by eighth notes in measure 13; the lower staff (bass clef) plays eighth notes in measures 11 and 12, and has a rest in measure 13. The second Guitar part (bass clef) continues with eighth notes, including a sharp sign on the first measure.

14

Drums

Guitar

Flute or Guitar

Guitar

This musical system covers measures 14, 15, and 16. The drums part consists of a steady quarter-note pattern. The top guitar part features a continuous eighth-note arpeggio. The flute or guitar part has a melodic line in the treble clef and a bass line in the bass clef. The bottom guitar part plays a bass line in the bass clef.

17

Drums

Guitar

Flute or Guitar

Guitar

This musical system covers measures 17, 18, and 19. The drums part consists of a steady quarter-note pattern. The top guitar part features a continuous eighth-note arpeggio. The flute or guitar part has a melodic line in the treble clef and a bass line in the bass clef. The bottom guitar part plays a bass line in the bass clef.

20

Drums

Guitar

Flute or Guitar

Guitar

23

Drums

Guitar

Flute or Guitar

Guitar

27

Drums

Guitar

Flute or Guitar

Guitar

31

Drums

Guitar

Flute or Guitar

Guitar

35

Drums


Guitar

Flute or Guitar

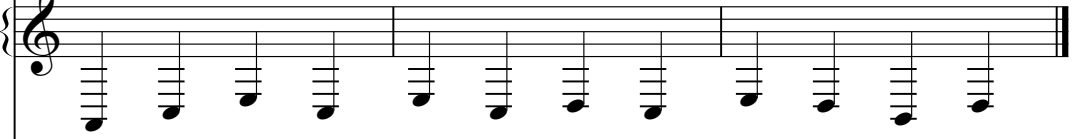
Guitar

38


Drums




Guitar



Flute or Guitar



Guitar



Detailed description: This page contains musical notation for measures 38 through 41. It features four staves: Drums, Guitar (treble clef), Flute or Guitar (treble clef), and Guitar (bass clef). The Drums staff shows a simple pattern of quarter notes. The upper Guitar staff has a series of eighth notes. The Flute or Guitar staff has a melodic line with some accidentals. The lower Guitar staff has a bass line with eighth notes and some accidentals.

Richter_Helmut-English_Dance_for_shining_People

snare

♩ = 125,000000

2

Musical notation for snare drum, measures 1-4. Measure 1: 4/4 time signature, two bars of a solid black line. Measure 2: quarter note with 'x', eighth note with 'x', quarter note with 'x', quarter note with 'x'. Measure 3: two bars of a solid black line. Measure 4: quarter note with 'x', quarter note with 'x', quarter note with 'x', quarter note with 'x'.

5

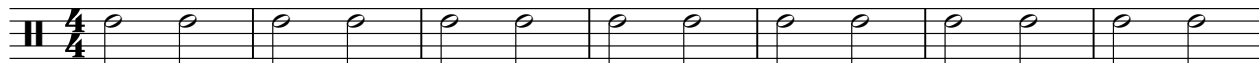
Musical notation for snare drum, measures 5-34. Measure 5: quarter note with 'x', eighth note with 'x', quarter note with 'x', quarter note with 'x'. Measure 6: quarter note with 'x', quarter note with 'x', quarter note with 'x', quarter note with 'x'. Measure 7-34: two bars of a solid black line.

34

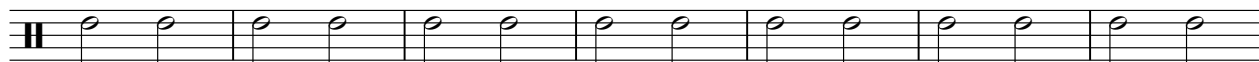
Richter_Helmut-English_Dance_for_shining_People

Drums

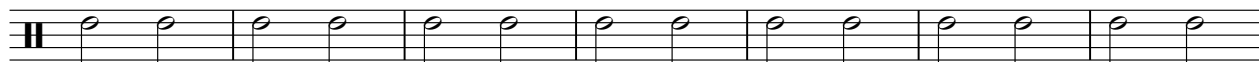
♩ = 125,000000



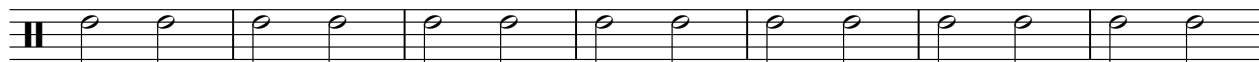
8



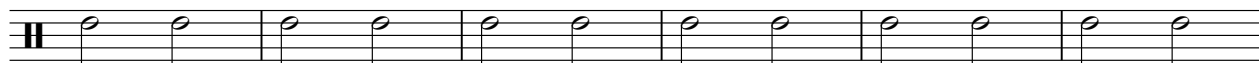
15



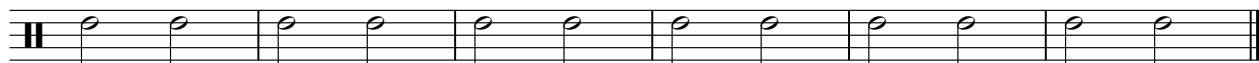
22



29



35



Richter_Helmut-English_Dance_for_shining_People

Guitar

♩ = 125,000000

4

8

12

16

20

24

29

35

Detailed description: This is a guitar score for a piece titled 'Richter_Helmut-English_Dance_for_shining_People'. The score is written in 4/4 time with a tempo of 125,000,000. It consists of eight staves of music. The first staff begins with a 4/4 time signature and a '4' above the staff. The music is primarily composed of eighth notes, often beamed in groups of four. The first four staves (measures 1-16) show a consistent rhythmic pattern. The fifth staff (measures 17-20) continues this pattern. The sixth staff (measures 21-24) introduces some variation in the eighth-note groups. The seventh staff (measures 25-29) shows further rhythmic complexity. The eighth staff (measures 30-35) concludes the piece with a final cadence. The score is presented in a clean, black-and-white format.

Richter_Helmut-English_Dance_for_shining_People

Flute or Guitar

♩ = 125,000000

Measures 1-9 of the piece. The music is in 4/4 time. Both the treble and bass staves begin with a whole rest followed by a large number '5', indicating a five-measure rest. The melody in the treble clef starts in measure 3 with a quarter note G4, followed by eighth notes A4, B4, C5, D5, E5, and F5. The bass clef part begins in measure 2 with a quarter note G3, followed by eighth notes A3, B3, C4, D4, E4, and F4.

Measures 10-13. The treble clef continues the melody with quarter notes G4, A4, B4, C5, D5, and E5. The bass clef continues with eighth notes G3, A3, B3, C4, D4, and E4. Measure 13 features a sharp sign (#) above the eighth note D5 in the treble clef.

Measures 14-17. The treble clef melody continues with quarter notes E5, D5, C5, B4, A4, and G4. The bass clef continues with eighth notes G3, A3, B3, C4, D4, and E4. Measure 14 has a sharp sign (#) above the eighth note D5. Measure 15 has a fermata over the quarter note G4 in the treble clef.

Measures 18-21. The treble clef melody continues with quarter notes F4, E4, D4, C4, B3, and A3. The bass clef continues with eighth notes G3, A3, B3, C4, D4, and E4. Measure 21 has a sharp sign (#) above the eighth note D5 in the treble clef.

Measures 22-26. The treble clef melody continues with quarter notes G3, A3, B3, C4, D4, and E4. The bass clef continues with eighth notes G3, A3, B3, C4, D4, and E4. Measure 22 has a sharp sign (#) above the eighth note D5. Measure 23 has a fermata over the quarter note G4 in the treble clef.

Measures 27-30. The treble clef melody continues with quarter notes F4, E4, D4, C4, B3, and A3. The bass clef continues with eighth notes G3, A3, B3, C4, D4, and E4. Measure 27 has a sharp sign (#) above the eighth note D5. Measure 28 has a sharp sign (#) above the eighth note D5. Measure 29 has a sharp sign (#) above the eighth note D5.

V.S.

2

Flute or Guitar

32



37



Richter_Helmut-English_Dance_for_shining_People

Guitar

♩ = 125,000000

