

Leo Sayer - When I Need You

♩ = 120,000000

Staff-3
drums1
drums2
Staff-10
Staff-5
Staff-4
Staff-2
Staff-9



8

Staff-3
drums1
drums2
Staff-10
Staff-5
Staff-4
Staff-2
Staff-8
Staff-9

14

Staff-3
drums1
drums2
Staff-10
Staff-5
Staff-4
Staff-2
Staff-8
Staff-9



21

Staff-3
drums1
drums2
Staff-10
Staff-5
Staff-4
Staff-2
Staff-8
Staff-9

27

Staff-3
drums1
drums2
Staff-10
Staff-5
Staff-4
Staff-2
Staff-8
Staff-9



33

Staff-3
drums1
drums2
Staff-10
Staff-5
Staff-4
Staff-2
Staff-8
Staff-9

40

Staff-3
drums1
drums2
Staff-10
Staff-5
Staff-4
Staff-2
Staff-8
Staff-9



46

Staff-3
drums1
drums2
Staff-10
Staff-5
Staff-4
Staff-2
Staff-8
Staff-9

52

Staff-3
drums1
drums2
Staff-10
Staff-5
Staff-4
Staff-2
Staff-8
Staff-9



59

Staff-3
drums1
drums2
Staff-10
Staff-4
Staff-2
Staff-9

Staff-3 Leo Sayer - When I Need You

♩ = 120,000000

6

10

15

21

26

31

36

42

47

V.S.

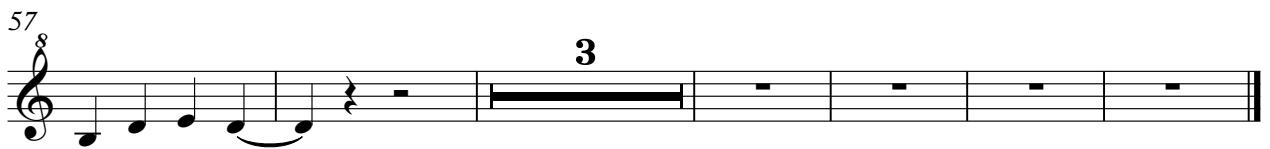
2

Staff-3

52

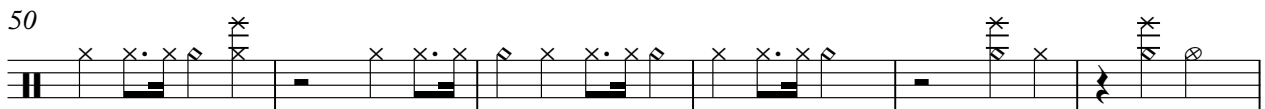
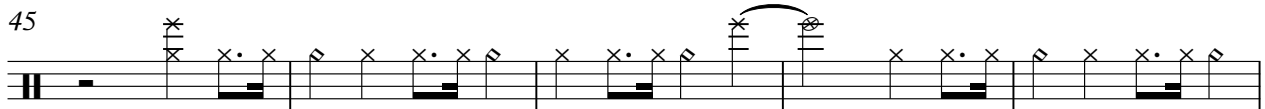
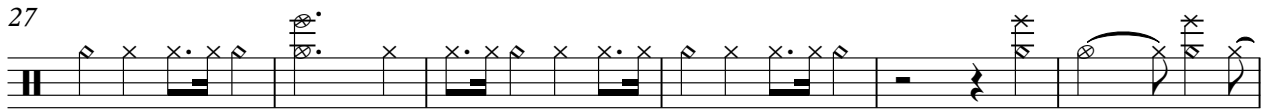
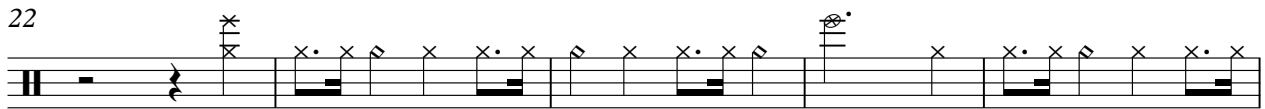
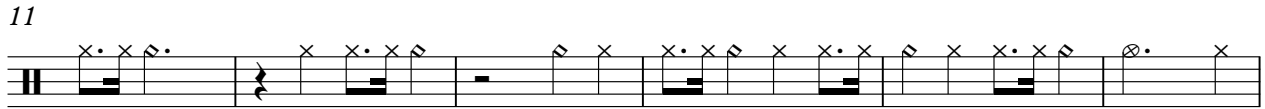


57



drums1 Leo Sayer - When I Need You

♩ = 120,000000



V.S.

2

drums1

56

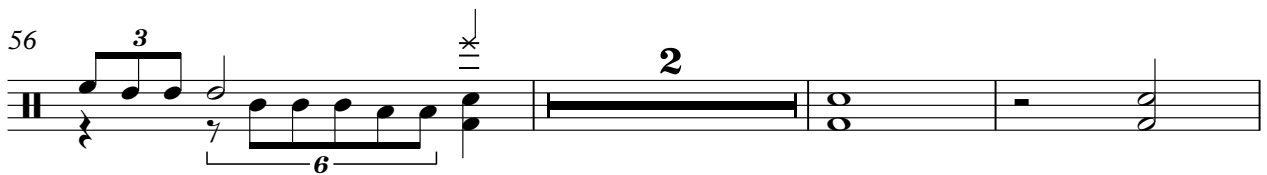
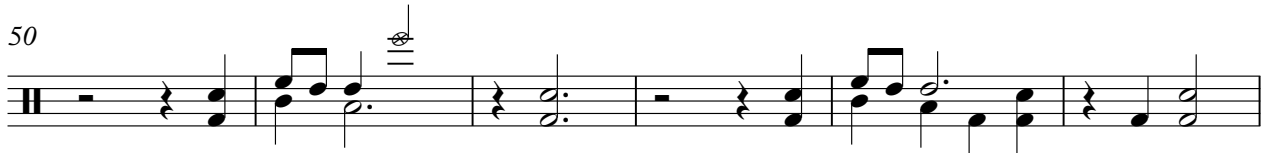
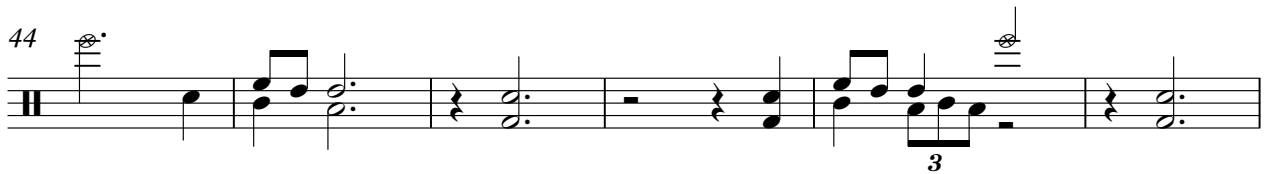
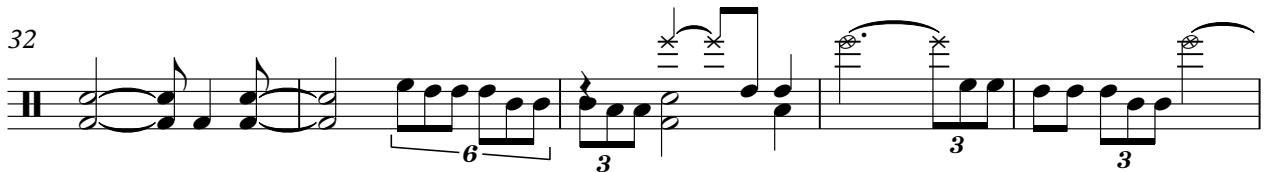
Musical notation for drums1 starting at measure 56. The notation includes a double bar line, a key signature of one flat, and a series of rhythmic symbols (x, x., x) on a five-line staff.

61

Musical notation for drums1 starting at measure 61. The notation includes a double bar line, a key signature of one flat, and a series of rhythmic symbols (x, x., x) on a five-line staff.

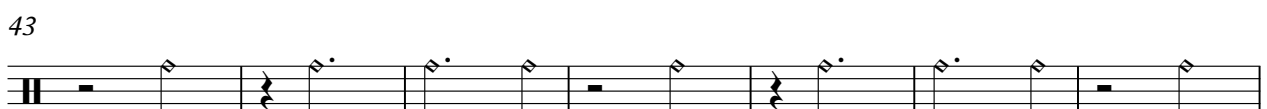
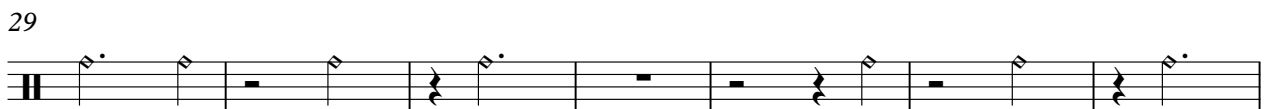
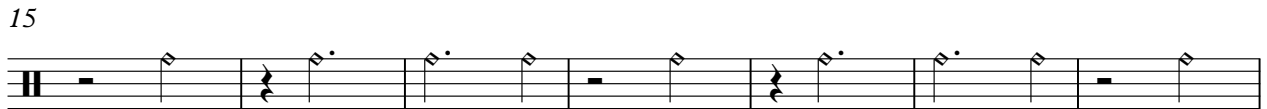
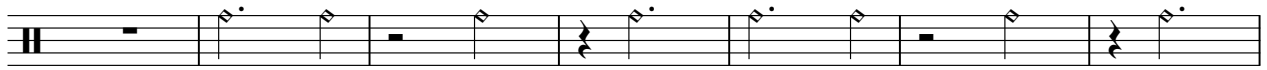
drums2 Leo Sayer - When I Need You

♩ = 120,000000



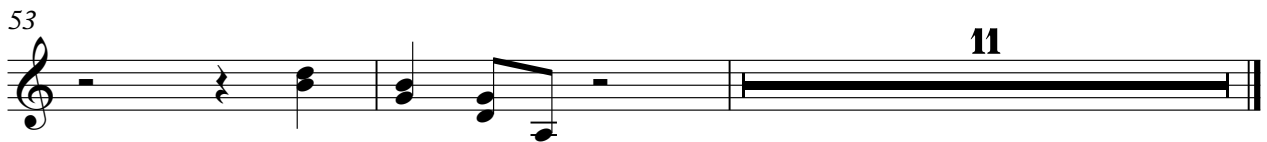
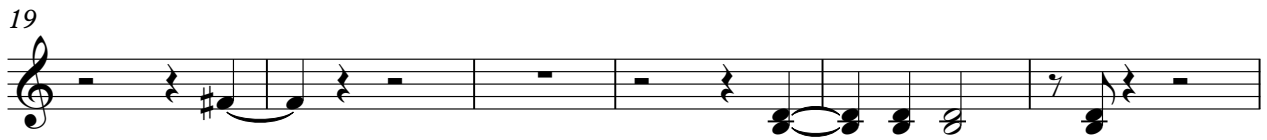
Staff-10 Leo Sayer - When I Need You

♩ = 120,000000



Staff-5 Leo Sayer - When I Need You

♩ = 120,000000



Staff-4 Leo Sayer - When I Need You

♩ = 120,000000

7

12

18

23

27

33

39

45

49

V.S.

2

Staff-4

55



61



Staff-8 Leo Sayer - When I Need You

♩ = 120,000000



Staff-9 Leo Sayer - When I Need You

♩ = 120,000000

7

12

18

23

28

33

39

45

50

V.S.

2

Staff-9

55



59

3

