

Beatles - Eleanor Rigby

$\text{♩} = 126,000130$ $\text{♩} = 130,000137$

ocarina

ocarina/synth string

pan/bassoon/flute

violin

violin

cello/strings

strings ens 1

This system of the musical score for 'Eleanor Rigby' is in 4/4 time. It features six staves. The top three staves are for woodwinds: ocarina, ocarina/synth string, and pan/bassoon/flute. The bottom three staves are for strings: violin (two parts), cello/strings, and strings ens 1. The pan/bassoon/flute part begins with a long note in the second measure, followed by a melodic line. The strings ens 1 part provides a rhythmic accompaniment with eighth notes.

4

pan/bassoon/flute

violin

cello/strings

strings ens 1

This system of the musical score continues from the first system. It features four staves: pan/bassoon/flute, violin, cello/strings, and strings ens 1. The pan/bassoon/flute part has a measure rest in the first measure, followed by a melodic line. The violin part has a melodic line in the first two measures, followed by a long note. The cello/strings part has a melodic line in the first two measures, followed by a long note. The strings ens 1 part provides a rhythmic accompaniment with eighth notes.

7

pan/bassoon/flute

violin

cello/strings

strings ens 1

10

♩ = 126,000,000,000

pan/bassoon/flute

cello/strings

strings ens 1

13

pan/bassoon/flute

cello/strings

strings ens 1

15

pan/bassoon/flute

cello/strings

strings ens 1

17

pan/bassoon/flute

cello/strings

strings ens 1

19

pan/bassoon/flute

violin

cello/strings

strings ens 1

$\text{♩} = 126,000130 \quad \text{♩} = 125,000000 \quad \text{♩} = 126,000137$

21

pan/bassoon/flute

violin

cello/strings

strings ens 1

Detailed description: This system covers measures 21, 22, and 23. The pan/bassoon/flute part (treble clef) plays a melodic line starting with a quarter note, followed by eighth notes, and ending with a quarter rest. The violin part (treble clef) has a sustained note with a sharp sign in measure 21, which changes to a natural sign in measure 22 and remains natural in measure 23. The cello/strings part (bass clef) has a sustained chord of four notes. The strings ens 1 part (bass clef) has a rhythmic pattern of eighth notes with a grace note.

24

pan/bassoon/flute

violin

violin

cello/strings

strings ens 1

Detailed description: This system covers measures 24, 25, and 26. The pan/bassoon/flute part (treble clef) plays a melodic line with eighth notes and a quarter note. The violin part (treble clef) has a sustained note with a sharp sign in measure 24, which changes to a natural sign in measure 25 and remains natural in measure 26. The second violin part (treble clef) has a sustained note with a natural sign in measure 24, which changes to a natural sign in measure 25 and remains natural in measure 26. The cello/strings part (bass clef) has a sustained chord of four notes. The strings ens 1 part (bass clef) has a rhythmic pattern of eighth notes with a grace note.

27 $\text{♩} = 126$

pan/bassoon/flute

violin

violin

cello/strings

strings ens 1

30

pan/bassoon/flute

cello/strings

strings ens 1

32

pan/bassoon/flute

violin

cello/strings

strings ens 1

34

pan/bassoon/flute

violin

cello/strings

strings ens 1

36

pan/bassoon/flute

violin

cello/strings

strings ens 1

$\text{♩} = 126,000130 = 125,000000$

38

pan/bassoon/flute

violin

violin

cello/strings

strings ens 1

$\text{♩} = 126,000137$

41

pan/bassoon/flute

violin

violin

cello/strings

strings ens 1

44

$\text{♩} = 126$

pan/bassoon/flute

violin

violin

cello/strings

strings ens 1

47 ♩ = 130,000137

pan/bassoon/flute

violin

cello/strings

strings ens 1

50

pan/bassoon/flute

violin

cello/strings

strings ens 1

♩ = 126,000253000000126,000300137

53

ocarina/synth string

pan/bassoon/flute

violin

violin

cello/strings

strings ens 1

56

ocarina/synth string

pan/bassoon/flute

violin

violin

cello/strings

strings ens 1

58

ocarina/synth string

pan/bassoon/flute

violin

violin

cello/strings

strings ens 1

60

ocarina/synth string

pan/bassoon/flute

violin

violin

cello/strings

strings ens 1

62

ocarina/synth string

pan/bassoon/flute

violin

violin

cello/strings

strings ens 1

63

$\text{♩} = 126,000130$ $\text{♩} = 125,000000$ $\text{♩} = 126,000130$ $\text{♩} = 125,000137$

ocarina

ocarina/synth string

pan/bassoon/flute

violin

violin

cello/strings

strings ens 1

65

ocarina

ocarina/synth string

pan/bassoon/flute

violin

violin

cello/strings

strings ens 1

68

ocarina

ocarina/synth string

pan/bassoon/flute

violin

violin

cello/strings

strings ens 1

70 $\text{♩} = 125,0000000084 = 121,0000000092$

ocarina

ocarina/synth string

pan/bassoon/flute

violin

violin

cello/strings

strings ens 1

Beatles - Eleanor Rigby

ocarina

♩ = 126,000130 ♩ = 130,000137 ♩ = 125,000130 ♩ = 130,000137 ♩ = 125,000130 ♩ = 130,000137

2 6 9 7

27 ♩ = 126,000130 ♩ = 130,000137 ♩ = 125,000130 ♩ = 130,000137 ♩ = 126,000130 ♩ = 130,000137

9 7

47 ♩ = 130,000137 ♩ = 126,000130 ♩ = 130,000137 ♩ = 126,000130 ♩ = 130,000137

6 9

65

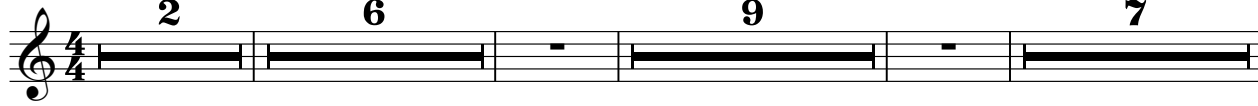
69 ♩ = 125,000130 ♩ = 130,000137 ♩ = 125,000130 ♩ = 130,000137

3

Beatles - Eleanor Rigby


ocarina/synth string

♪ = 126,000130 ♪ = 130,000137 ♪ = 125,000130 ♪ = 130,000137 ♪ = 125,000130 ♪ = 130,000137




2 6 9 7

27 ♪ = 126,000130 ♪ = 130,000137 ♪ = 125,000130 ♪ = 130,000137 ♪ = 126,000130 ♪ = 130,000137



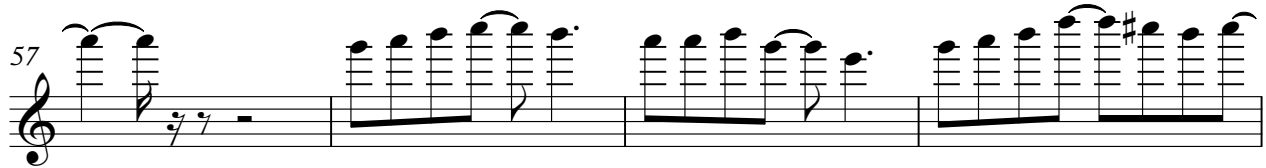
9 7

47 ♪ = 130,000137 ♪ = 125,000130 ♪ = 130,000137

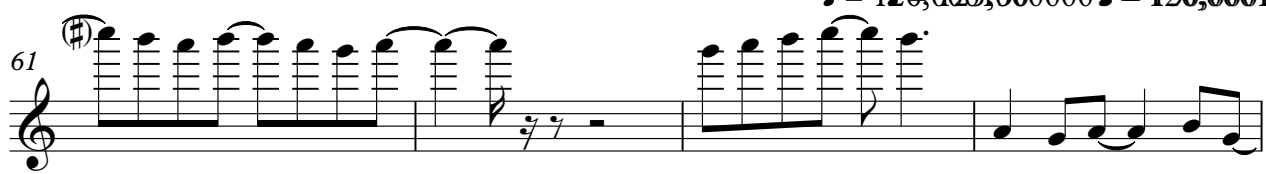


6

57



61 ♪ = 126,000130 ♪ = 130,000137



7

65



69 ♪ = 125,000130 ♪ = 130,000137



pan/bassoon/flute

Beatles - Eleanor Rigby

♩ = 126,000/130 ♩ = 130,000/137

6 ♩ = 126,000/130 ♩ = 126,000/130

11

15

19 ♩ = 126,000/130 ♩ = 126,000/130

24 ♩ = 126,000/130 ♩ = 126,000/130

29

33

37 ♩ = 126,000/130 ♩ = 126,000/130

42 ♩ = 126,000/130 ♩ = 126,000/130

V.S.

Beatles - Eleanor Rigby

violin

♩ = 126,000130 ♩ = 130,000137

8 ♩ = 126,000130 ♩ = 130,000137 ♩ = 126,000130 ♩ = 130,000137

26 ♩ = 126,000130 ♩ = 130,000137 ♩ = 126,000130 ♩ = 130,000137

40

45 ♩ = 126,000130 ♩ = 130,000137

52 ♩ = 126,000130 ♩ = 130,000137

59

62 ♩ = 126,000130 ♩ = 130,000137

67

70 ♩ = 125,000084 ♩ = 120,000084 ♩ = 13,000092

Beatles - Eleanor Rigby

cello/strings

♩ = 126,000130 ♩ = 130,000137

8 ♩ = 216,000130 ♩ = 216,000137

13

17 ♩ = 126,000130 ♩ = 126,000137

23 ♩ = 216,000130 ♩ = 126,000137

30

33

36 ♩ = 126,000130 ♩ = 126,000137

42 ♩ = 216,000130 ♩ = 126,000137

50 ♩ = 126,000130 ♩ = 216,000137

V.S.

55



58

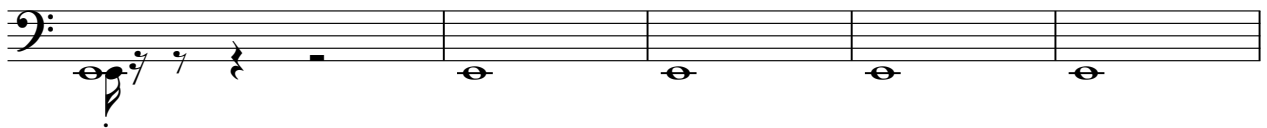


61



64

♩ = 126,0000000137



69

♩ = 125,00000008420,0000000899,000092



Beatles - Eleanor Rigby

strings ens 1

♩ = 126,000/130 ♩ = 130,000/137

5

9 ♩ = 126,000/130 ♩ = 130,000/137

13

16

18 ♩ = 126,000/130 ♩ = 126,000/137

21

25 ♩ = 126,000/130 ♩ = 126,000/137

29

33

V.S.

2

35 *strings lens 1*

$\text{♩} = 126,000 \quad \text{♩} = 125,000000 \quad \text{♩} = 126,000000 \quad \text{♩} = 126,000000$

37

40

$\text{♩} = 126,000000 \quad \text{♩} = 125,000000 \quad \text{♩} = 126,000000 \quad \text{♩} = 126,000000$

44

48

52 $\text{♩} = 126,000000 \quad \text{♩} = 126,000000$

56

59

61

$\text{♩} = 126,000000 \quad \text{♩} = 125,000000 \quad \text{♩} = 126,000000 \quad \text{♩} = 126,000000$

63

strings ens 1

66

Musical notation for strings ens 1, measure 66. The staff shows a sequence of chords: G2, A2, B2, C3, D3, E3, F3, G3, A3, B3, C4, D4. Each chord is a single note with a stem and a flag, indicating a sixteenth note. The notes are grouped in pairs across three measures.

69

$\text{♩} = 125, 010600123456000000092$

Musical notation for strings ens 1, measure 69. The staff shows a sequence of chords: G2, A2, B2, C3, D3, E3, F3, G3, A3, B3, C4, D4, E4, F4, G4, A4, B4, C5, D5. Each chord is a single note with a stem and a flag, indicating a sixteenth note. The notes are grouped in pairs across three measures. The notation includes a tempo marking: ♩ = 125, 010600123456000000092.