

Beatles - Yes It Is

♩ = 97,000107

Handclaps

Tambourine

Guitar

Steel String

Melody

Backup Melody

♩ = 97,000107

Fiddle

♩ = 97,000107

Fiddle

The image displays a musical score for the song "Yes It Is" by The Beatles. The score is arranged in a system with seven staves. The top two staves are for Handclaps and Tambourine, both in 12/8 time. The next three staves are for Guitar, Steel String, and Melody, also in 12/8 time. The bottom two staves are for Backup Melody and two Fiddle parts, with the first Fiddle staff in 12/8 time and the second Fiddle staff in 12/8 time. The tempo is marked as ♩ = 97,000107. The score includes various musical notations such as rests, eighth notes, and chords.

4

Handclaps

Tambourine

Guitar

Steel String

Melody

Backup Melody

Fiddle

Fiddle

Detailed description: This system contains measures 4 and 5. The Handclaps and Tambourine parts play a rhythmic pattern of eighth notes. The Guitar and Steel String parts play a complex accompaniment with chords and single notes. The Melody part features a lead line with slurs and ties. The Backup Melody part provides harmonic support. The two Fiddle parts play a simple harmonic line.



6

Handclaps

Tambourine

Guitar

Steel String

Melody

Backup Melody

Fiddle

Fiddle

Detailed description: This system contains measures 6 and 7. The Handclaps and Tambourine parts continue their rhythmic pattern. The Guitar and Steel String parts play a complex accompaniment. The Melody part features a lead line with slurs and ties. The Backup Melody part provides harmonic support. The two Fiddle parts play a simple harmonic line.

8

Handclaps
Tambourine
Guitar
Steel String
Melody
Backup Melody

12

12

12

12

12

12

Detailed description: This block contains the musical notation for measures 8 through 12. It features six staves: Handclaps and Tambourine (percussion), Guitar and Steel String (chordal accompaniment), Melody (treble clef), and Backup Melody (bass clef). The key signature has one sharp (F#). The time signature is 12/8. Measures 8-9 are in 6/8 time, and measures 10-12 are in 12/8 time. The notation includes various rhythmic patterns, slurs, and accidentals.



10

Handclaps
Tambourine
Guitar
Steel String
Melody
Backup Melody
Fiddle
Fiddle

12

12

12

12

12

12

12

12

Detailed description: This block contains the musical notation for measures 10 through 14. It features seven staves: Handclaps and Tambourine (percussion), Guitar and Steel String (chordal accompaniment), Melody (treble clef), Backup Melody (bass clef), and two Fiddle staves (treble clef). The key signature has one sharp (F#). The time signature is 12/8. Measures 10-11 are in 12/8 time, and measures 12-14 are in 12/8 time. The notation includes various rhythmic patterns, slurs, and accidentals.

12

Handclaps

Tambourine

Guitar

Steel String

Melody

Backup Melody

Fiddle

Fiddle



14

Handclaps

Tambourine

Guitar

Steel String

Melody

Backup Melody

Fiddle

Fiddle

16

Handclaps

Tambourine

Guitar

Steel String

Melody

Backup Melody



18

Handclaps

Tambourine

Guitar

Steel String

Melody

Backup Melody

Fiddle

Fiddle

20

Handclaps

Tambourine

Guitar

Steel String

Melody



22

Handclaps

Tambourine

Guitar

Steel String

Melody

Backup Melody

Fiddle

Fiddle

24

Handclaps

Tambourine

Guitar

Steel String

Melody

Backup Melody

Fiddle

Fiddle

Detailed description: This system contains measures 24 and 25. The Handclaps and Tambourine parts feature a rhythmic pattern of eighth notes. The Guitar and Steel String parts consist of chords and arpeggiated figures. The Melody and Backup Melody parts have a melodic line with some rests. The two Fiddle staves are mostly silent, with some notes appearing in the second measure.



26

Handclaps

Tambourine

Guitar

Steel String

Melody

Backup Melody

Fiddle

Fiddle

Detailed description: This system contains measures 26 and 27. The Handclaps and Tambourine parts continue with the same rhythmic pattern. The Guitar and Steel String parts have different chordal textures. The Melody and Backup Melody parts show a continuation of the melodic theme. The two Fiddle staves have more active parts, including some triplets and slurs.

28

Handclaps

Tambourine

Guitar

Steel String

Melody

Backup Melody



30

Handclaps

Tambourine

Guitar

Steel String

Melody

Backup Melody

32

Handclaps
Tambourine
Guitar
Steel String
Melody

Detailed description: This system contains measures 32 through 35. The Handclaps and Tambourine parts play a rhythmic pattern of eighth notes. The Guitar and Steel String parts play a complex chordal accompaniment with various chord voicings. The Melody part features a sequence of notes: G4, A4, B4, C5, B4, A4, G4, F#4, E4, D4, C4.



34

Handclaps
Tambourine
Guitar
Steel String
Melody
Backup Melody

Detailed description: This system contains measures 34 through 37. The Handclaps and Tambourine parts continue with the same rhythmic pattern. The Guitar and Steel String parts play a complex chordal accompaniment. The Melody part features a sequence of notes: G4, A4, B4, C5, B4, A4, G4, F#4, E4, D4, C4. The Backup Melody part is mostly silent, with a triplet of notes (G4, A4, B4) starting in measure 37.

36

Handclaps

Tambourine

Guitar

Steel String

Melody

Backup Melody

Fiddle

Fiddle



38

Handclaps

Tambourine

Guitar

Steel String

Melody

Backup Melody

Fiddle

Fiddle

40

Handclaps

Tambourine

Guitar

Steel String

Melody

Backup Melody

Fiddle

Fiddle

Detailed description: This system contains measures 40 and 41. The Handclaps and Tambourine parts feature a rhythmic pattern of eighth notes. The Guitar and Steel String parts play chords, with the Steel String part including a triplet of eighth notes in measure 41. The Melody part has a half note in measure 40 and a quarter note in measure 41. The Backup Melody part has a half note in measure 40 and a quarter note in measure 41. The two Fiddle staves have a half note in measure 40 and a quarter note in measure 41.



42

Handclaps

Tambourine

Guitar

Steel String

Melody

Backup Melody

Detailed description: This system contains measures 42 and 43. The Handclaps and Tambourine parts feature a rhythmic pattern of eighth notes. The Guitar and Steel String parts play chords, with the Steel String part including a triplet of eighth notes in measure 43. The Melody part has a half note in measure 42 and a quarter note in measure 43. The Backup Melody part has a half note in measure 42 and a quarter note in measure 43. The two Fiddle staves have a half note in measure 42 and a quarter note in measure 43.

44

Handclaps

Tambourine

Guitar

Steel String

Melody

Backup Melody

Fiddle

Fiddle

Handclaps

Beatles - Yes It Is

♩ = 97,000107

12/8

4

7 6/8 12/8

12/8

12/8

15/8

18/8

21/8

24/8

27/8

V.S.

2

Handclaps

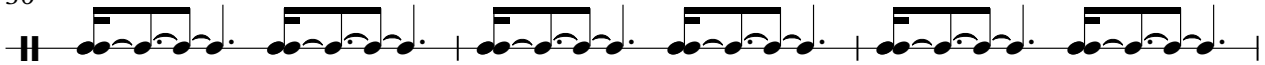
30



33



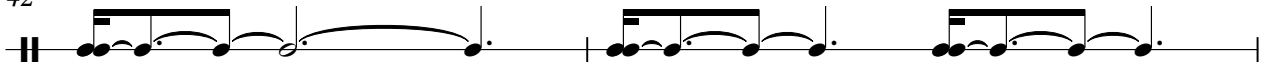
36



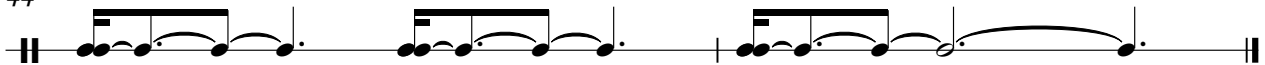
39



42



44



Tambourine

Beatles - Yes It Is

♩ = 97,000107

12/8

4

7

6/8 12/8

10

12

15

18

21

24

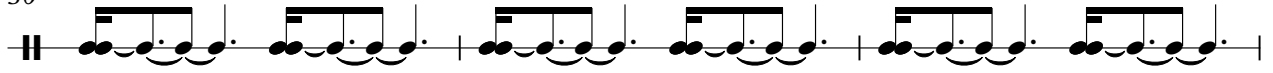
27

V.S.

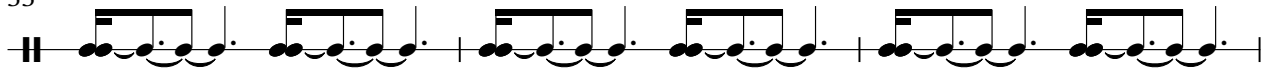
2

Tambourine

30



33



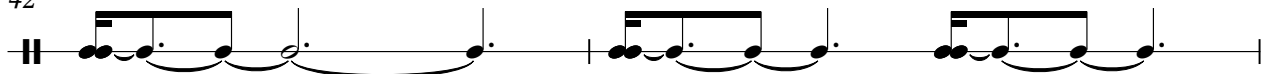
36



39



42



44



Beatles - Yes It Is

Guitar

♩ = 97,000107

4

6

9 12

15

18

20

23

26

V.S.

29

32

34

36

39

42

44

32



35



38



41



43



Beatles - Yes It Is

Melody

♩ = 97,000107

2

6

9

13

16

19

22

25

28

V.S.

31



35



38



42



44



Beatles - Yes It Is

Backup Melody

♩ = 97,000107

2

6

9

13

16

19

3

25

29

31

3

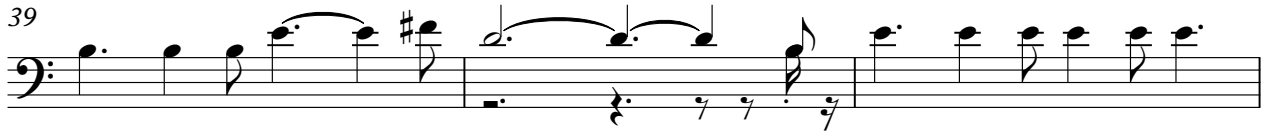
2

Backup Melody

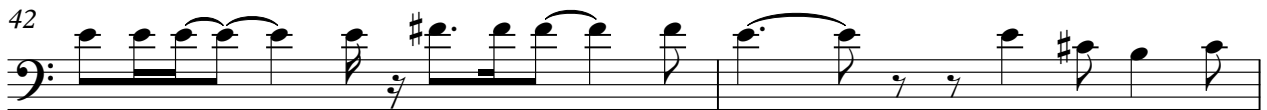
35



39



42



44



Fiddle

Beatles - Yes It Is

♩ = 97,000107

5

10

15

23

27

38

41

Fiddle

Beatles - Yes It Is

♩ = 97,000107

5

10

15

23

27

38

41