

Byrd, William - Music for Six Viols. - Michael J. Starke

♩ = 187,999969

Viol 1  
Viol 2  
Viol 4

4

Viol 1  
Viol 2  
Viol 3  
Viol 4  
Viol 5  
Viol 6

7

Viol 1

Viol 2

Viol 3

Viol 4

Viol 5

Viol 6

Detailed description: This block contains the musical notation for measures 7, 8, and 9 of a six-violin section. Measure 7 starts with a fermata over a whole note in Violin 1. Violin 2 has a whole rest. Violin 3 has a half note, Violin 4 a quarter note, Violin 5 a quarter note, and Violin 6 a quarter note. Measure 8 features a half note in Violin 1, a whole rest in Violin 2, and quarter notes in Violins 3, 4, 5, and 6. Measure 9 shows a half note in Violin 1, a half note in Violin 2, and quarter notes in Violins 3, 4, 5, and 6. A large slur is placed under the bottom two staves (Violins 5 and 6) at the end of the system.

10

Viol 1

Viol 2

Viol 3

Viol 4

Viol 5

Viol 6

Detailed description: This block contains the musical notation for measures 10, 11, and 12 of a six-violin section. Measure 10 has quarter notes in Violins 1, 2, 3, 4, 5, and 6. Measure 11 features a half note in Violin 1, a half note in Violin 2, a half note in Violin 3, a quarter note in Violin 4, a quarter note in Violin 5, and a quarter note in Violin 6. Measure 12 shows a half note in Violin 1, a half note in Violin 2, a half note in Violin 3, a quarter note in Violin 4, a quarter note in Violin 5, and a quarter note in Violin 6. A large slur is placed under the bottom two staves (Violins 5 and 6) at the end of the system.

$\text{♩} = 177,999,969,999,000$

13

Viol 1  
Viol 2  
Viol 3  
Viol 4  
Viol 5  
Viol 6

16  $\text{♩} = 187,999,969$

Viol 1  
Viol 2  
Viol 3  
Viol 4  
Viol 5  
Viol 6

19

Viol 1  
Viol 2  
Viol 3  
Viol 4  
Viol 5  
Viol 6

This musical score covers measures 19, 20, and 21. It features six staves for Violins 1 through 6. Measure 19 shows Violin 1 with a melodic line of quarter notes, Violin 2 with a descending eighth-note pattern, Violin 3 with a half-note line, Violin 4 with a half-note line, Violin 5 with a half-note line, and Violin 6 with a half-note line. Measure 20 contains a double bar line. Measure 21 features a long slur over Violin 1 and Violin 5, with Violin 2 playing a half-note line, Violin 3 a half-note line, Violin 4 a half-note line, and Violin 6 a half-note line.

22

Viol 1  
Viol 2  
Viol 3  
Viol 4  
Viol 5  
Viol 6

This musical score covers measures 22, 23, and 24. Measure 22 shows Violin 1 with a half-note line, Violin 2 with a half-note line, Violin 3 with a half-note line, Violin 4 with a half-note line, Violin 5 with a half-note line, and Violin 6 with a half-note line. Measure 23 features a long slur over Violin 2 and Violin 3, with Violin 1 playing a half-note line, Violin 4 a half-note line, Violin 5 a half-note line, and Violin 6 a half-note line. Measure 24 shows Violin 1 with a half-note line, Violin 2 with a half-note line, Violin 3 with a half-note line, Violin 4 with a half-note line, Violin 5 with a half-note line, and Violin 6 with a half-note line.

25

Viol 1

Viol 2

Viol 3

Viol 4

Viol 5

Viol 6

Detailed description: This musical score covers measures 25, 26, and 27. Measure 25 shows Violin 1 with a half note G4, Violin 2 with a quarter note G4, Violin 3 with a half note G3, Violin 4 with a half note G3, Violin 5 with a quarter note G2, and Violin 6 with a quarter note G2. Measure 26 continues with Violin 1 on a half note A4, Violin 2 on a quarter note A4, Violin 3 on a half note A3, Violin 4 on a half note A3, Violin 5 on a quarter note A2, and Violin 6 on a quarter note A2. Measure 27 features a fermata over Violin 1 and Violin 5, while Violin 2 has a quarter note G4, Violin 3 has a half note G3, Violin 4 has a half note G3, and Violin 6 has a quarter note G2.

28

Viol 1

Viol 2

Viol 3

Viol 4

Viol 5

Viol 6

Detailed description: This musical score covers measures 28, 29, and 30. Measure 28 shows Violin 1 with a half note G4, Violin 2 with a quarter note G4, Violin 3 with a quarter note G4, Violin 4 with a quarter note G4, Violin 5 with a quarter note G4, and Violin 6 with a quarter note G4. Measure 29 continues with Violin 1 on a half note A4, Violin 2 on a quarter note A4, Violin 3 on a quarter note A4, Violin 4 on a quarter note A4, Violin 5 on a quarter note A4, and Violin 6 on a quarter note A4. Measure 30 features a fermata over Violin 1 and Violin 5, while Violin 2 has a quarter note G4, Violin 3 has a half note G3, Violin 4 has a half note G3, and Violin 6 has a quarter note G2.

31

Viol 1  
Viol 2  
Viol 3  
Viol 4  
Viol 5  
Viol 6

This musical score covers measures 31, 32, and 33. It features six staves for Violins 1 through 6. Violin 1 and Violin 6 play a melodic line with a slur over measures 31 and 32, ending with a fermata in measure 33. Violin 2 plays a rhythmic accompaniment of eighth notes. Violin 3 and Violin 4 play a similar rhythmic accompaniment, with Violin 4 having a slur over measures 32 and 33. Violin 5 plays a bass line with a slur over measures 32 and 33. Violin 6 has a fermata in measure 31 and then rests in measure 32 before playing a note in measure 33.

34

Viol 1  
Viol 2  
Viol 3  
Viol 4  
Viol 5  
Viol 6

This musical score covers measures 34, 35, and 36. It features six staves for Violins 1 through 6. Violin 1 plays a melodic line with a slur over measures 34 and 35, ending with a fermata in measure 36. Violin 2 plays a rhythmic accompaniment of eighth notes. Violin 3 and Violin 4 play a similar rhythmic accompaniment, with Violin 4 having a slur over measures 35 and 36. Violin 5 plays a bass line with a slur over measures 35 and 36. Violin 6 plays a rhythmic accompaniment of eighth notes.

37

Viol 1  
Viol 2  
Viol 3  
Viol 4  
Viol 5  
Viol 6

This musical score covers measures 37, 38, and 39. It features six staves for Violins 1 through 6. Violin 1 is in treble clef, Violin 2 is in treble clef, Violin 3 is in bass clef, Violin 4 is in bass clef with a key signature of one flat, Violin 5 is in bass clef, and Violin 6 is in bass clef. The music consists of various note values including quarter, eighth, and half notes, with some rests and dynamic markings.

40

Viol 1  
Viol 2  
Viol 3  
Viol 4  
Viol 5  
Viol 6

This musical score covers measures 40, 41, and 42. It features six staves for Violins 1 through 6. Violin 1 is in treble clef, Violin 2 is in treble clef, Violin 3 is in bass clef, Violin 4 is in bass clef with a key signature of one flat, Violin 5 is in bass clef, and Violin 6 is in bass clef. The music continues with various note values and rests, maintaining the same instrumental and key signature setup as the previous system.

43

Viol 1  
Viol 2  
Viol 3  
Viol 4  
Viol 5  
Viol 6

This musical score covers measures 43, 44, and 45. It features six staves for Violins 1 through 6. Violin 1 (treble clef) starts with a dotted quarter note, followed by a quarter note, and rests in measure 44. Violin 2 (treble clef) plays a half note in measure 43, followed by a quarter note, a dotted quarter note, and a half note in measure 44. Violin 3 (bass clef) starts with a dotted quarter note, followed by a quarter note, and rests in measure 44. Violin 4 (bass clef) plays a quarter note, a dotted quarter note, and a half note in measure 43, followed by a quarter note, a dotted quarter note, and a half note in measure 44. Violin 5 (bass clef) starts with a dotted quarter note, followed by a quarter note, and rests in measure 44. Violin 6 (bass clef) plays a quarter note, a dotted quarter note, and a half note in measure 43, followed by a quarter note, a dotted quarter note, and a half note in measure 44.

46

Viol 1  
Viol 2  
Viol 3  
Viol 4  
Viol 5  
Viol 6

This musical score covers measures 46, 47, and 48. It features six staves for Violins 1 through 6. Violin 1 (treble clef) starts with a dotted quarter note, followed by a quarter note, and rests in measure 47. Violin 2 (treble clef) rests in measure 46, followed by a quarter note, a dotted quarter note, and a half note in measure 47, and a quarter note, a dotted quarter note, and a half note in measure 48. Violin 3 (bass clef) plays a quarter note, a dotted quarter note, and a half note in measure 46, followed by a quarter note, a dotted quarter note, and a half note in measure 47, and a quarter note, a dotted quarter note, and a half note in measure 48. Violin 4 (bass clef) rests in measure 46, followed by a quarter note, a dotted quarter note, and a half note in measure 47, and a quarter note, a dotted quarter note, and a half note in measure 48. Violin 5 (bass clef) plays a quarter note, a dotted quarter note, and a half note in measure 46, followed by a quarter note, a dotted quarter note, and a half note in measure 47, and a quarter note, a dotted quarter note, and a half note in measure 48. Violin 6 (bass clef) rests in measure 46, followed by a quarter note, a dotted quarter note, and a half note in measure 47, and a quarter note, a dotted quarter note, and a half note in measure 48.



49

Viol 1

Viol 2

Viol 3

Viol 4

Viol 5

Viol 6

51

Viol 1

Viol 2

Viol 3

Viol 4

Viol 5

Viol 6

54

Viol 1  
Viol 2  
Viol 3  
Viol 4  
Viol 5  
Viol 6

This musical system contains measures 54, 55, and 56. It features six staves for Violins 1 through 6. Violins 1 and 2 are in treble clef, while Violins 3, 4, 5, and 6 are in bass clef. The music consists of eighth and sixteenth notes with various rests and phrasing slurs.

57

Viol 1  
Viol 2  
Viol 3  
Viol 4  
Viol 5  
Viol 6

This musical system contains measures 57, 58, and 59. It features six staves for Violins 1 through 6. Violins 1 and 2 are in treble clef, while Violins 3, 4, 5, and 6 are in bass clef. The music continues with eighth and sixteenth notes, including a key signature change to one flat in measure 57.

60

Viol 1  
Viol 2  
Viol 3  
Viol 4  
Viol 5  
Viol 6

This musical score covers measures 60, 61, and 62. It features six staves for Violins 1 through 6. The key signature has one flat (B-flat), and the time signature is 4/2. Measure 60 begins with a double bar line and a 6/8 time signature change. Measure 61 has a 9/8 time signature change. Measure 62 ends with a 4/2 time signature change. The notation includes various note values, rests, and slurs across all six staves.

62

Viol 1  
Viol 2  
Viol 3  
Viol 4  
Viol 5  
Viol 6

This musical score covers measures 62, 63, and 64. It features six staves for Violins 1 through 6. The key signature has one flat (B-flat), and the time signature is 4/2. Measure 62 begins with a double bar line and a 4/2 time signature change. Measure 63 has a 4/2 time signature change. Measure 64 ends with a 4/2 time signature change. The notation includes various note values, rests, and slurs across all six staves.

65

Viol 1  
Viol 2  
Viol 3  
Viol 4  
Viol 5  
Viol 6

This musical score covers measures 65, 66, and 67. It features six staves for Violins 1 through 6. Violin 1 (treble clef) starts with a half note G4, followed by a quarter note A4, and a dotted quarter note B4 in measure 65. In measure 66, it has a half note C5 with a fermata, followed by a quarter note B4. In measure 67, it has a whole note C5. Violin 2 (treble clef) has a whole rest in measure 65, then a quarter note G4, a half note A4, and a quarter note B4 in measure 66. In measure 67, it has a quarter note C5, a quarter note B4, a quarter note A4, and a quarter note G4. Violin 3 (bass clef) has a quarter note G3, a quarter note A3, a quarter note B3, and a quarter note C4 in measure 65. In measure 66, it has a quarter note B3, a quarter note A3, a quarter note G3, and a quarter note F3. In measure 67, it has a whole note E3. Violin 4 (bass clef) has a quarter note G3, a quarter note A3, and a quarter note B3 in measure 65. In measure 66, it has a quarter note C4, a quarter note B3, a quarter note A3, and a quarter note G3. In measure 67, it has a quarter note F3, a quarter note E3, a quarter note D3, and a quarter note C3. Violin 5 (bass clef) has a quarter note G3, a quarter note A3, and a quarter note B3 in measure 65. In measure 66, it has a quarter note C4, a quarter note B3, and a quarter note A3. In measure 67, it has a quarter note G3, a quarter note F3, a quarter note E3, and a quarter note D3. Violin 6 (bass clef) has a whole rest in measure 65, then a whole note G3 in measure 66, and a whole note F3 in measure 67.

68

Viol 1  
Viol 2  
Viol 3  
Viol 4  
Viol 5  
Viol 6

This musical score covers measures 68, 69, and 70. Violin 1 (treble clef) has whole rests in measures 68 and 69, and a whole note G4 in measure 70. Violin 2 (treble clef) has a quarter note G4, a quarter note A4, and a quarter note B4 in measure 68. In measure 69, it has a quarter note C5, a quarter note B4, a quarter note A4, and a quarter note G4. In measure 70, it has a quarter note F4, a quarter note E4, a quarter note D4, and a quarter note C4. Violin 3 (bass clef) has a whole note G3 in measure 68, a whole note A3 in measure 69, and a whole note B3 in measure 70. Violin 4 (bass clef) has a quarter note G3, a quarter note A3, and a quarter note B3 in measure 68. In measure 69, it has a quarter note C4, a quarter note B3, and a quarter note A3. In measure 70, it has a quarter note G3, a quarter note F3, and a quarter note E3. Violin 5 (bass clef) has a quarter note G3, a quarter note A3, and a quarter note B3 in measure 68. In measure 69, it has a quarter note C4, a quarter note B3, and a quarter note A3. In measure 70, it has a quarter note G3, a quarter note F3, and a quarter note E3. Violin 6 (bass clef) has a whole note G3 in measure 68, a whole note A3 in measure 69, and a whole note B3 in measure 70.

71

Viol 1  
Viol 2  
Viol 3  
Viol 4  
Viol 5  
Viol 6

This musical score covers measures 71, 72, and 73. It features six staves for Violins 1 through 6. Violins 1 and 2 are in treble clef, while Violins 3, 4, 5, and 6 are in bass clef. The music consists of various note values including quarter, eighth, and half notes, with some notes beamed together and others held as whole notes. Measure 71 shows a melodic line in Violin 1 and 2, while Violin 3 has a whole note. Measure 72 continues the melodic development in Violins 1 and 2, with Violin 4 and 5 providing harmonic support. Measure 73 concludes the phrase with sustained notes in Violins 1, 2, and 5.

74

Viol 1  
Viol 2  
Viol 3  
Viol 4  
Viol 5  
Viol 6

This musical score covers measures 74, 75, and 76. It features six staves for Violins 1 through 6. Violins 1 and 2 are in treble clef, while Violins 3, 4, 5, and 6 are in bass clef. The music continues with a mix of note values and rests. Measure 74 shows a melodic line in Violin 2 and 3, with Violin 4 and 5 providing harmonic support. Measure 75 continues the melodic development in Violins 2 and 3, with Violin 4 and 5 providing harmonic support. Measure 76 concludes the phrase with sustained notes in Violins 1, 2, and 5.

77

Viol 1  
Viol 2  
Viol 3  
Viol 4  
Viol 5  
Viol 6

This musical score covers measures 77, 78, and 79. It features six staves for Violins 1 through 6. Violins 1 and 2 are in treble clef, while Violins 3, 4, 5, and 6 are in bass clef. The music consists of various note values including quarter, eighth, and half notes, with some notes beamed together. Measure 79 includes a fermata over a note in Violin 4.

80

Viol 1  
Viol 2  
Viol 3  
Viol 4  
Viol 5  
Viol 6

This musical score covers measures 80, 81, and 82. It features six staves for Violins 1 through 6. Violins 1 and 2 are in treble clef, while Violins 3, 4, 5, and 6 are in bass clef. The music includes various note values and rests. Measure 82 includes a 4/2 time signature change at the end of the staff.

82

Viol 1  
Viol 2  
Viol 3  
Viol 4  
Viol 5  
Viol 6

This musical score block covers measures 82, 83, and 84. It features six staves for Violins 1 through 6. The key signature has one flat (B-flat) and the time signature is 4/2. Violin 1 starts with a whole rest in measure 82, followed by a half note G4 in measure 83 and a half note F4 in measure 84. Violin 2 plays a half note G4 in measure 82, followed by a half note F4 in measure 83, and a half note E4 in measure 84. Violin 3 plays a half note G4 in measure 82, followed by a half note F4 in measure 83, and a whole rest in measure 84. Violin 4 plays a half note G4 in measure 82, followed by a half note F4 in measure 83, and a half note E4 in measure 84. Violin 5 plays a half note G4 in measure 82, followed by a half note F4 in measure 83, and a half note E4 in measure 84. Violin 6 plays a half note G4 in measure 82, followed by a half note F4 in measure 83, and a half note E4 in measure 84.

85

Viol 1  
Viol 2  
Viol 3  
Viol 4  
Viol 5  
Viol 6

This musical score block covers measures 85, 86, and 87. It features six staves for Violins 1 through 6. The key signature has one flat (B-flat) and the time signature is 4/2. Violin 1 plays a half note G4 in measure 85, followed by a half note F4 in measure 86, and a whole rest in measure 87. Violin 2 plays a half note G4 in measure 85, followed by a half note F4 in measure 86, and a half note E4 in measure 87. Violin 3 plays a whole rest in measure 85, followed by a half note G4 in measure 86, and a half note F4 in measure 87. Violin 4 plays a half note G4 in measure 85, followed by a half note F4 in measure 86, and a half note E4 in measure 87. Violin 5 plays a whole rest in measure 85, followed by a half note G4 in measure 86, and a half note F4 in measure 87. Violin 6 plays a half note G4 in measure 85, followed by a half note F4 in measure 86, and a half note E4 in measure 87.

88

Viol 1  
Viol 2  
Viol 3  
Viol 4  
Viol 5  
Viol 6

This musical score covers measures 88, 89, and 90. It features six staves for Violins 1 through 6. Violin 1 is in treble clef, while Violins 2-6 are in bass clef. Measure 88 shows Violin 1 with a whole rest, Violin 2 with a half note, Violin 3 with a half note, Violin 4 with a half note, Violin 5 with a half note, and Violin 6 with a whole rest. Measure 89 continues with similar patterns, including a half note in Violin 3 and a whole note in Violin 4. Measure 90 concludes with various note values across all staves, including a dotted half note in Violin 2 and a whole note in Violin 5.

91

Viol 1  
Viol 2  
Viol 3  
Viol 4  
Viol 5  
Viol 6

This musical score covers measures 91, 92, and 93. It features six staves for Violins 1 through 6. Violin 1 is in treble clef, while Violins 2-6 are in bass clef. Measure 91 shows Violin 1 with a quarter note, Violin 2 with a whole rest, Violin 3 with a quarter note, Violin 4 with a quarter note, Violin 5 with a whole rest, and Violin 6 with a quarter note. Measure 92 continues with similar patterns, including a quarter note in Violin 2 and a whole note in Violin 4. Measure 93 concludes with various note values across all staves, including a quarter note in Violin 1 and a whole note in Violin 5.



94

Viol 1  
Viol 2  
Viol 3  
Viol 4  
Viol 5  
Viol 6

This musical score block covers measures 94, 95, and 96. It features six staves for Violins 1 through 6. Violin 1 is in treble clef with a key signature of one flat. Violins 2 and 3 are in treble clef, while Violins 4, 5, and 6 are in bass clef. The music consists of various note values including quarter, eighth, and half notes, with some notes beamed together and others held across measures. Measure 94 shows a mix of active notes and rests. Measure 95 continues the melodic lines, with some notes tied from the previous measure. Measure 96 concludes the section with several notes and rests.

97

Viol 1  
Viol 2  
Viol 3  
Viol 4  
Viol 5  
Viol 6

This musical score block covers measures 97, 98, and 99. It features six staves for Violins 1 through 6. Violin 1 is in treble clef with a key signature of one flat. Violins 2 and 3 are in treble clef, while Violins 4, 5, and 6 are in bass clef. The music continues with various note values and rests. Measure 97 shows a mix of active notes and rests. Measure 98 continues the melodic lines, with some notes tied from the previous measure. Measure 99 concludes the section with several notes and rests.

100

Viol 1  
Viol 2  
Viol 3  
Viol 4  
Viol 5  
Viol 6

This musical score covers measures 100 to 102. It features six staves for Violins 1 through 6. The key signature has one flat (B-flat), and the time signature is 4/2. Measure 100 begins with a tempo marking of 100. Violin 1 starts with a half note G4, followed by quarter notes A4, B-flat4, and C5. Violin 2 starts with a half note B-flat3, followed by quarter notes C4, D4, E4, and F4. Violin 3 starts with a half note G3, followed by quarter notes A3, B-flat3, and C4. Violin 4 starts with a half note F3, followed by quarter notes G3, A3, and B-flat3. Violin 5 starts with a half note E2, followed by quarter notes F2, G2, and A2. Violin 6 starts with a half note D2, followed by quarter notes E2, F2, and G2. Measure 101 continues the patterns, with Violin 1 playing a half note C5, Violin 2 a half note G4, Violin 3 a half note C4, Violin 4 a half note B-flat3, Violin 5 a half note G2, and Violin 6 a half note F2. Measure 102 concludes with Violin 1 playing a half note B-flat4, Violin 2 a half note F4, Violin 3 a half note B-flat3, Violin 4 a half note G3, Violin 5 a half note E2, and Violin 6 a half note D2.

102

Viol 1  
Viol 2  
Viol 3  
Viol 4  
Viol 5  
Viol 6

This musical score covers measures 103 to 105. The key signature has one flat (B-flat), and the time signature is 4/2. Measure 103 features a long slur over Violin 1, which plays a half note G4. Violin 2 plays quarter notes G4, A4, and B-flat4. Violin 3 plays quarter notes G3, A3, and B-flat3. Violin 4 plays quarter notes F3, G3, and A3. Violin 5 plays quarter notes E2, F2, and G2. Violin 6 plays quarter notes D2, E2, and F2. Measure 104 continues with Violin 1 playing a half note G4, Violin 2 a half note A4, Violin 3 a half note A3, Violin 4 a half note G3, Violin 5 a half note F2, and Violin 6 a half note E2. Measure 105 concludes with Violin 1 playing a half note B-flat4, Violin 2 a half note B-flat4, Violin 3 a half note B-flat3, Violin 4 a half note A3, Violin 5 a half note G2, and Violin 6 a half note F2.

105

Viol 1

Viol 2

Viol 3

Viol 4

Viol 5

Viol 6

Viol 1

Byrd, William - Music for Six Viols. - Michael J. Starke


♩ = 187,999969



6 **2**




11  $\text{♩} = 187,999969$



16  $\text{♩} = 187,999969$



20



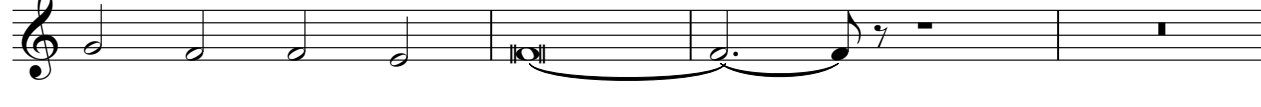
24



28



30



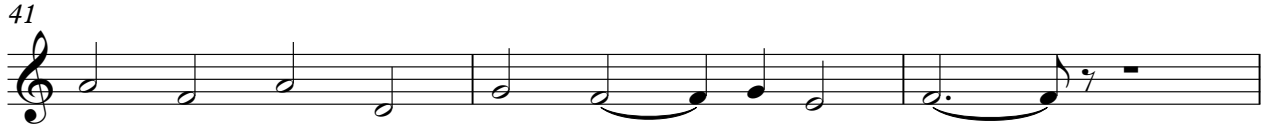
34



37



41



44



47



50



54



57



60



63



67

3

73

78

3

81

6/8 4/2

85

3

91

96

100

6/8 4/2

104

$\text{♩} = 173,999780993913,928378000541008300000$

Byrd, William - Music for Six Viols. - Michael J. Starke

Viol 2

♩ = 187,999969

5

9

13 ♩ = 171,6999909

17

20

24

28

32

35

V.S.

39

Musical staff 39, treble clef, showing a sequence of notes and rests. The staff begins with a double bar line and a fermata. The notes are: G4 (quarter), A4 (quarter), B4 (quarter), C5 (quarter), B4 (quarter), A4 (quarter), G4 (quarter), F4 (quarter), E4 (quarter), D4 (quarter), C4 (half).

44

Musical staff 44, treble clef, showing a sequence of notes and rests. The staff begins with a double bar line and a fermata. The notes are: G4 (quarter), A4 (quarter), B4 (quarter), C5 (quarter), B4 (quarter), A4 (quarter), G4 (quarter), F4 (quarter), E4 (quarter), D4 (quarter), C4 (half).

48

Musical staff 48, treble clef, showing a sequence of notes and rests with key signature changes. The staff begins with a double bar line and a fermata. The notes are: G4 (quarter), A4 (quarter), B4 (quarter), C5 (quarter), B4 (quarter), A4 (quarter), G4 (quarter), F4 (quarter), E4 (quarter), D4 (quarter), C4 (half). The key signature changes from one flat to two flats at measure 48, and back to one flat at measure 50.

52

Musical staff 52, treble clef, showing a sequence of notes and rests. The staff begins with a double bar line and a fermata. The notes are: G4 (quarter), A4 (quarter), B4 (quarter), C5 (quarter), B4 (quarter), A4 (quarter), G4 (quarter), F4 (quarter), E4 (quarter), D4 (quarter), C4 (half).

56

Musical staff 56, treble clef, showing a sequence of notes and rests. The staff begins with a double bar line and a fermata. The notes are: G4 (quarter), A4 (quarter), B4 (quarter), C5 (quarter), B4 (quarter), A4 (quarter), G4 (quarter), F4 (quarter), E4 (quarter), D4 (quarter), C4 (half).

60

Musical staff 60, treble clef, showing a sequence of notes and rests with key signature changes. The staff begins with a double bar line and a fermata. The notes are: G4 (quarter), A4 (quarter), B4 (quarter), C5 (quarter), B4 (quarter), A4 (quarter), G4 (quarter), F4 (quarter), E4 (quarter), D4 (quarter), C4 (half). The key signature changes from one flat to two flats at measure 60, and back to one flat at measure 62.

63

Musical staff 63, treble clef, showing a sequence of notes and rests. The staff begins with a double bar line and a fermata. The notes are: G4 (quarter), A4 (quarter), B4 (quarter), C5 (quarter), B4 (quarter), A4 (quarter), G4 (quarter), F4 (quarter), E4 (quarter), D4 (quarter), C4 (half).

67

Musical staff 67, treble clef, showing a sequence of notes and rests. The staff begins with a double bar line and a fermata. The notes are: G4 (quarter), A4 (quarter), B4 (quarter), C5 (quarter), B4 (quarter), A4 (quarter), G4 (quarter), F4 (quarter), E4 (quarter), D4 (quarter), C4 (half).

70

Musical staff 70, treble clef, showing a sequence of notes and rests. The staff begins with a double bar line and a fermata. The notes are: G4 (quarter), A4 (quarter), B4 (quarter), C5 (quarter), B4 (quarter), A4 (quarter), G4 (quarter), F4 (quarter), E4 (quarter), D4 (quarter), C4 (half).

74

Musical staff 74, treble clef, showing a sequence of notes and rests. The staff begins with a double bar line and a fermata. The notes are: G4 (quarter), A4 (quarter), B4 (quarter), C5 (quarter), B4 (quarter), A4 (quarter), G4 (quarter), F4 (quarter), E4 (quarter), D4 (quarter), C4 (half).



78



82



85



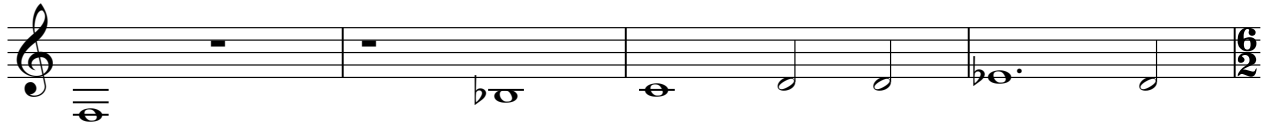
89



93



97



101



104



$\text{♩} = 173,957,809,312,992,8,000,000,099,000,000,000$

Viol 3

Byrd, William - Music for Six Viols. - Michael J. Starke

♩ = 187,999969

5

9

13

♩ = 177,999817999130-00870099969

17

21

24

27

30

33

37

V.S.

2

Viol 3

40



43



46



49



52



55



58



61



64



67



71



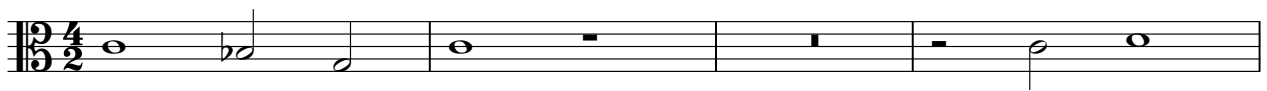
75



79



82



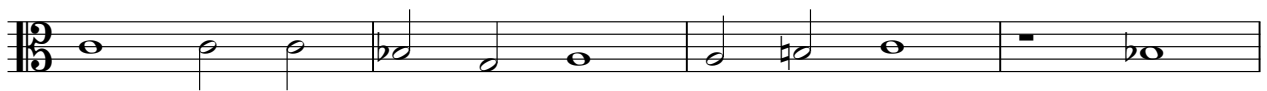
86



89



93



97



101



104

♩ = 173,957,989,914,912,912,989,990,969



Viol 4

Byrd, William - Music for Six Viols. - Michael J. Starke

♩ = 187,999969

2

6

10

14

♩ = 187,999969

2

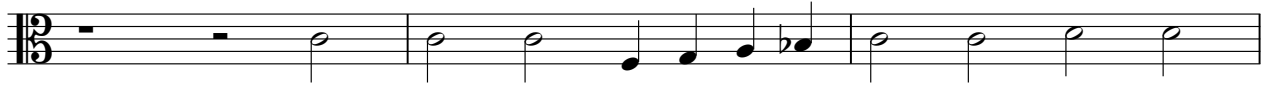
20

23

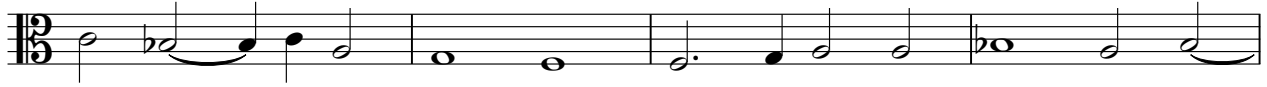
26

2

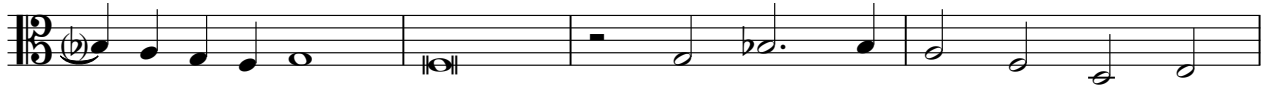
30



33



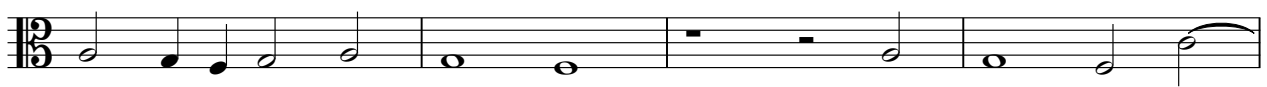
37



41



44



48



51



55



59



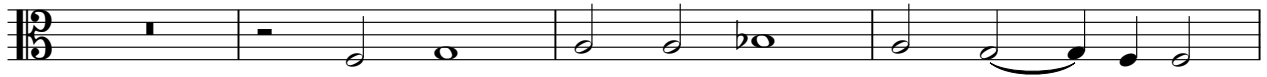
62



66



70



74



79



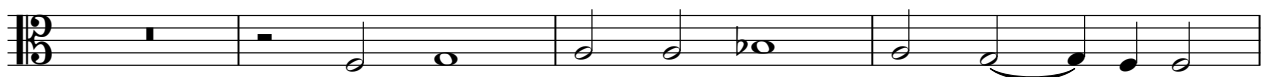
82



86



90



94



4

Viol 4

98



101



104

♩ = 173, 157, 139, 129, 119, 109, 99, 87, 78, 68, 60, 50, 40






Viol 5

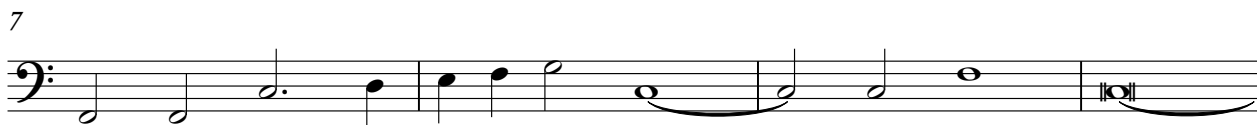
Byrd, William - Music for Six Viols. - Michael J. Starke

♩ = 187,999969

3



7



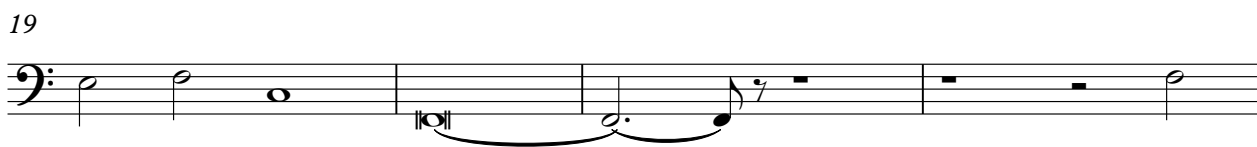
11



15 ~~♩ = 177,999969~~ ♩ = 187,999969



19

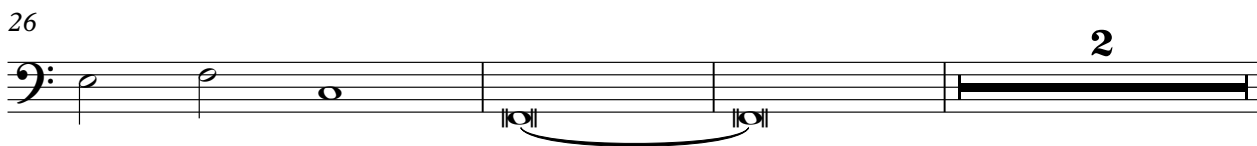


23



26

2



31



35



39



43



47



50



54



58



62



66



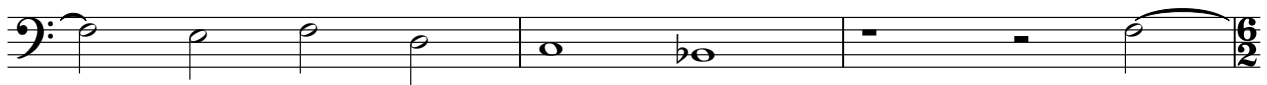
70



74



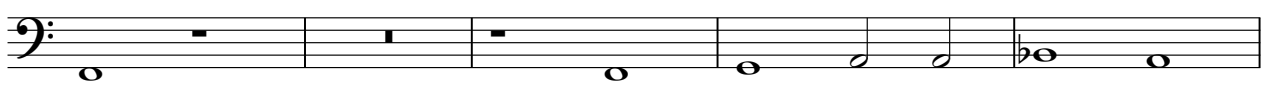
78



81



84



89



94



98

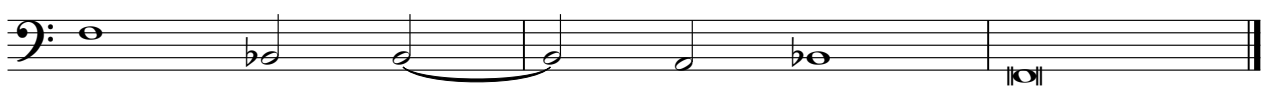


102



105

♩ = 173,999786 = 151,9999878 = 123,1000000069



Viol 6

♩ = 187,999969

4

8

13

♩ = 177,999969

17

3

23

28

32

36

39

43

2

Viol 6

47



50



54



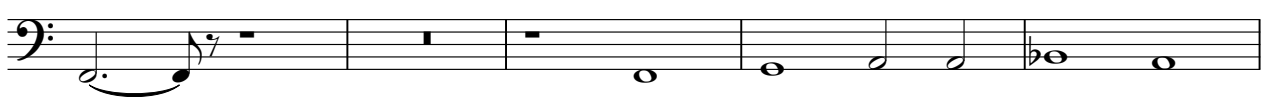
58



61



64



69



74



78



82



86



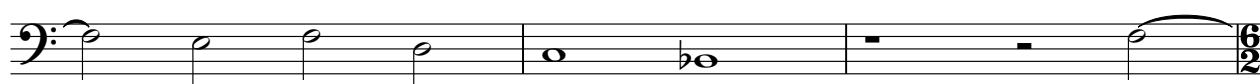
90



94



98



101



104

♩ = 173,915786993913,91287800103,91995000009

