

Wonders-I_Need_You-That_Thing_You_Do

00:00:00:00
1.1,00
Intro

00:00:01:22
2.1,00
Intro1

♩ = 137,000061

DRUMS

Guitar

BASS

Choral Grp

Melody

♩ = 137,000061

00:00:08:22
6.1,00
Verse 1

4

DRUMS

Guitar

BASS

Choral Grp

Melody

♩ = 137,000061

7

DRUMS

Guitar

BASS

Melody

10

DRUMS

Guitar

BASS

Melody

00:00:22:22
14.1,00
Minor Chord

13

DRUMS

Guitar

BASS

Melody

16

DRUMS

Guitar

BASS

Melody

19

DRUMS

Guitar

BASS

Choral Grp

Melody

22

DRUMS

Guitar

BASS

Choral Grp

Melody

25

DRUMS

Guitar

BASS

Melody

28

DRUMS

Guitar

BASS

Melody

31

DRUMS

Guitar

BASS

Melody

34

DRUMS

Guitar

BASS

Melody

37

DRUMS

Guitar

BASS

Choral Grp

Melody

00:01:11:22
42.1,00
Bridge 1

40

DRUMS

Guitar

BASS

Choral Grp

Melody

43

DRUMS

Guitar

BASS

Choral Grp

Melody

Detailed description: This system contains measures 43 and 44. The drums part features a consistent pattern of eighth notes with accents. The guitar part consists of chords and single notes, including a triplet in measure 44. The bass part plays a steady eighth-note accompaniment. The choral group and melody parts are identical, featuring a sequence of chords and a final sustained chord.

45

DRUMS

Guitar

BASS

Choral Grp

Melody

Detailed description: This system contains measures 45 and 46. The drums part continues with eighth notes, adding cymbal accents in measure 46. The guitar part shows a change in chord voicings and includes a triplet in measure 46. The bass part continues with eighth notes, with some changes in the final measure. The choral group and melody parts are identical, showing a progression of chords and a final sustained chord.

47

DRUMS

Guitar

BASS

Choral Grp

Melody

00:01:25:22
50.1,00
12 String Lead

50

DRUMS

Guitar

Gtr Lead

BASS

Choral Grp

Melody

53

DRUMS

Guitar

Gtr Lead

BASS

00:01:39:22
58.1,00
Minor Chord

56

DRUMS

Guitar

Gtr Lead

BASS

Melody

59

DRUMS

Guitar

BASS

Melody

62

DRUMS

Guitar

BASS

Choral Grp

Melody

65

DRUMS

Guitar

BASS

Choral Grp

Melody

Detailed description: This system contains measures 65 and 66. Measure 65 starts with a double bar line and a '65' above it. The drums play a consistent pattern of eighth notes. The guitar and bass play chords and single notes. The choral group and melody parts have sparse notes with rests. Measure 66 has a '66.1,00' and 'Bridge 2' box above it. The drums play a different pattern with some accents. The guitar and bass continue with their respective parts. The choral group and melody parts have more notes.

67

DRUMS

Guitar

BASS

Choral Grp

Melody

Detailed description: This system contains measures 67 and 68. Measure 67 starts with a double bar line and a '67' above it. The drums play a pattern with some accents. The guitar and bass continue with their parts. The choral group and melody parts have notes and rests. Measure 68 has a '68.1,00' and 'Bridge 2' box above it. The drums play a pattern with some accents. The guitar and bass continue with their parts. The choral group and melody parts have notes and rests, with some long lines indicating sustained notes.

69

DRUMS

Guitar

BASS

Choral Grp

Melody

71

DRUMS

Guitar

BASS

Choral Grp

Melody

74

DRUMS

Guitar

BASS

Melody

77

DRUMS

Guitar

BASS

Melody

80

DRUMS

Guitar

BASS

Melody

83

DRUMS

Guitar

BASS

Melody

00:02:32:07
88.1,00
END CLIMBING PART

86

DRUMS

Guitar

BASS

Choral Grp

Melody

89

DRUMS

Guitar

BASS

Choral Grp

Melody

Detailed description: This system contains measures 89, 90, and 91. The DRUMS part features a consistent pattern of eighth notes on the snare and bass drums, with occasional cymbal accents. The GUITAR part consists of a series of chords and single notes, including some triplets and rests. The BASS part provides a steady eighth-note accompaniment. The CHORAL GRP and MELODY parts are identical, featuring a sequence of notes and rests that form a simple melodic line.

92

DRUMS

Guitar

BASS

Choral Grp

Melody

Detailed description: This system contains measures 92, 93, and 94. The DRUMS part continues with a similar pattern but includes more complex rhythmic figures, such as triplets and accents. The GUITAR part features a mix of chords and single notes, with some rests. The BASS part maintains its eighth-note accompaniment. The CHORAL GRP and MELODY parts are identical, showing a continuation of the melodic line from the previous system.

The image shows a musical score for five instruments: DRUMS, Guitar, BASS, Choral Grp, and Melody. The score is organized into five staves, each with its instrument name on the left. The DRUMS staff uses a drum set icon and has a single note in the first measure. The Guitar staff uses a treble clef and has a chord in the first measure. The BASS staff uses a bass clef and has a chord in the first measure. The Choral Grp staff uses a treble clef and has a complex melodic line in the first measure. The Melody staff uses a treble clef and has a chord in the first measure. The score is divided into four measures by vertical bar lines.

Wonders-I_Need_You-That_Thing_You_Do

DRUMS

♩ = 137,000061

5

9

13

17

21

25

30

34

38

Detailed description: This image shows a drum score for the song 'Wonders-I_Need_You-That_Thing_You_Do'. The score is written on ten staves, each representing a 4-measure phrase. The first staff includes a tempo marking of ♩ = 137,000061 and a 4/4 time signature. The notation uses standard drum symbols: a vertical line for the snare drum, an 'x' for the hi-hat, and a circle for the bass drum. The score includes various rhythmic patterns, including eighth and sixteenth notes, rests, and dynamic markings like accents and fermatas. Measure numbers 5, 9, 13, 17, 21, 25, 30, 34, and 38 are placed at the beginning of their respective staves.

V.S.

DRUMS

42

46

50

55

59

63

67

71

75

79

DRUMS

83

Musical notation for drum set, measures 83-86. The notation is on a single staff with a double bar line at the beginning. It features a complex rhythmic pattern with various note values, rests, and articulation marks (x and triangles) indicating specific drum sounds. A double bar line with a circled X symbol is present at the end of measure 86.

87

Musical notation for drum set, measures 87-90. The notation is on a single staff with a double bar line at the beginning. It features a complex rhythmic pattern with various note values, rests, and articulation marks (x and triangles) indicating specific drum sounds.

91

Musical notation for drum set, measures 91-93. The notation is on a single staff with a double bar line at the beginning. It features a complex rhythmic pattern with various note values, rests, and articulation marks (x and triangles) indicating specific drum sounds. A circled X symbol is present at the end of measure 93. The final measure (93) contains a thick black bar with the number '3' above it, indicating a triple measure rest.



86



90



93



2

Wonders-I_Need_You-That_Thing_You_Do

Gtr Lead

♩ = 137,000061

49

54

57

39

BASS Wonders-I_Need_You-That_Thing_You_Do

♩ = 137,000061



6



11



16



20



24



29



34



38



42



V.S.

44



48



52



57



62



66



68



72



76



81



86



91

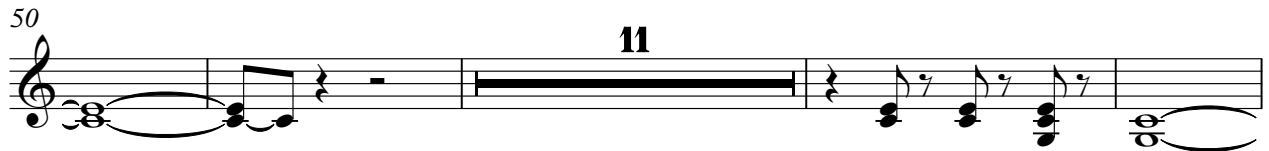
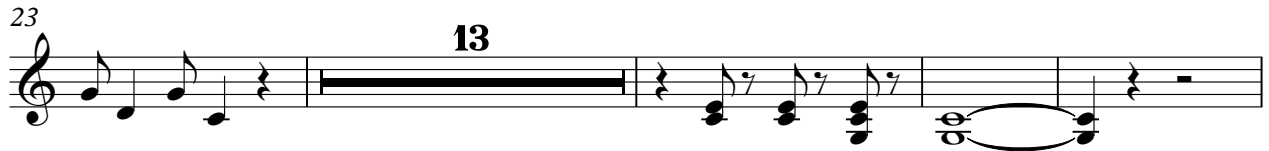


2

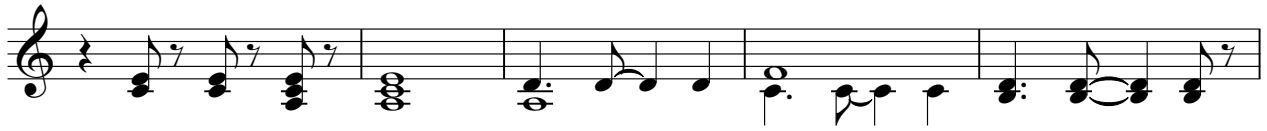
Wonders-I_Need_You-That_Thing_You_Do

Choral Grp

♩ = 137,000061



87



92



Wonders-I_Need_You-That_Thing_You_Do

Melody

♩ = 137,000061

6

11

16

21

26

31

37

41

45

V.S.

Melody

50

5

60

60

65

65

69

69

74

74

79

79

85

85

91

2