

# Mendelssohn, Felix - A Midsummer Night's Dream Jean-Francois Lucai

0.0"	2.0"	3.3"	
1.1,00	2.1,00	3.1,00	
F. Mendelssohn : Ein Sommernachtstraum op. 61			

♩ = 60,000000 ♩ = 86,000053

2 Flauti

2 Oboi

2 Clarinetti in A

2 Fagotti

Corno I in D

Corno II in D

2 Trombe in D

Timpani

Soprano I

Soprano II

Chor Soprano I II

Chor Alto I II

Violine I

Violine II

Viola

Violoncelle

Contrabasse

5

♩ = 80, 000, 000, 500, 20, 000, 000000

2 Flauti

2 Oboi

2 Clarinetti in A

2 Fagotti

Corno I in D

Violine I

Violine II

Viola

Violoncelle

Contrabasse

♩ = 80, 000, 000, 500, 20, 000, 000000

10  $\text{♩} = 15,499983,16996902 = 83,999969$   $\text{♩} = 84,5000239,999954$  <sup>3</sup>

2 Flauti

Violine I

Violine II

Viola

Violoncelle

Contrabasse



14  $\text{♩} = 84,500023$   $\text{♩} = 89,999954$   $\text{♩} = 84,500023$   $\text{♩} = 89,999954$

2 Flauti

Violine I

2 Flauti

2 Clarinetti in A

Soprano I

Violine I

Violine II

Viola

Violoncelle

16  $\text{♩} = 84,500023$   $\text{♩} = 89,999954$   $\text{♩} = 84,500023$   $\text{♩} = 89,999954$

2 Flauti  $\text{♩} = 84,500023$   $\text{♩} = 89,999954$   $\text{♩} = 84,500023$   $\text{♩} = 89,999954$

2 Clarinetti in A

Soprano I

$\text{♩} = 84,500023$   $\text{♩} = 89,999954$   $\text{♩} = 84,500023$   $\text{♩} = 89,999954$

Violine I

Violine II

Viola

Violoncelle

20 ♪ = 84,500023 ♪ = 89,999954 ♪ = 84,500023 ♪ = 89,999954

2 Flauti

2 Clarinetti in A

Soprano I

Violine I

Violine II

Viola

Violoncelle

22 ♪ = 84,500023 ♪ = 89,999954 ♪ = 84,500023 ♪ = 89,999954

2 Flauti

2 Clarinetti in A

Soprano I

Violine I

Violine II

Viola

Violoncelle

24 ♪ = 84,500023 ♪ = 89,999954 ♪ = 84,500023 ♪ = 89,999954

2 Flauti

2 Clarinetti in A

Soprano I

Violine I

Violine II

Viola

Violoncelle

Contrabbasse



26 ♪ = 84,500023 ♪ = 89,999954 ♪ = 84,500023 ♪ = 89,999954

2 Flauti

2 Clarinetti in A

Soprano I

Violine I

Violine II

Viola

Violoncelle

Contrabbasse

28 ♯ = 84,500023 ♯ = 89,999954 ♯ = 84,500023 ♯ = 89,999954

2 Flauti

2 Clarinetti in A

Soprano I

Violine I

Violine II

Viola

30 ♪ = 84,500023 ♪ = 89,999954 ♪ = 84,500023 ♪ = 89,999954

2 Flauti

2 Clarinetti in A

Soprano I

Violine I

Violine II

Viola

Violoncelle

Contrabbasse

32

2 Flauti

2 Oboi

2 Clarinetti in A

Soprano I

Violine I

Violine II

Viola

Violoncelle

Contrabasse

♩ = 84,500023   ♩ = 89,999954   ♩ = 84,500023   ♩ = 89,999954   ♩ = 73,99998

34

2 Flauti

2 Oboi

Soprano I

Violine I

Violine II

Viola

Violoncelle

Contrabasse

36 ♩ = 84,500023 ♩ = 89,999954 ♩ = 84,500023 ♩ = 89,999954

2 Flauti

2 Oboi

2 Clarinetti in A

2 Fagotti

Soprano I

Violine I

Violine II

Viola

Violoncelle

Contrabbasse

38 ♩ = 84,500023 ♩ = 89,999954 ♩ = 84,500023 ♩ = 89,999954

2 Clarinetti in A

Musical score for 2 Clarinets in A and 2 Fagotti. The Clarinet part features a long note with a slur. The Bassoon part features a sequence of notes.

2 Fagotti

Soprano I

Musical score for Soprano I, showing a sequence of notes.

♩ = 84,500023 ♩ = 89,999954 ♩ = 84,500023 ♩ = 89,999954

Violine I

Musical score for Violine I, showing a sequence of notes with fingerings (6).

40 ♩ = 84,500023 ♩ = 89,999954 ♩ = 84,500023 ♩ = 89,999954

2 Flauti

2 Oboi

2 Clarinetti in A

2 Fagotti

Soprano I

Violine I

Violine II

Viola

Violoncelle

Contrabasse



42  $\text{♩} = 84,500023$   $\text{♩} = 89,999954$   $\text{♩} = 84,500023$   $\text{♩} = 89,999954$

2 Flauti

2 Oboi

2 Clarinetti in A

Soprano I

$\text{♩} = 84,500023$   $\text{♩} = 89,999954$   $\text{♩} = 84,500023$   $\text{♩} = 89,999954$

Violine I

Violine II

Viola

Violoncelle

Contrabasse



44  $\text{♩} = 84,500023$   $\text{♩} = 60,000000$

2 Clarinetti in A

Soprano I

$\text{♩} = 84,500023$   $\text{♩} = 60,000000$

Violine I

46  $\text{♩} = 84,500023$   $\text{♩} = 89,999954$

2 Flauti

2 Clarinetti in A

2 Fagotti

Corno I in D

Corno II in D

Soprano I

Soprano II

Chor Soprano I II

Chor Alto I II

$\text{♩} = 84,500023$   $\text{♩} = 89,999954$

Violine I

Viola

Violoncelle

Contrabasse

47  $\text{♩} = 84,500023$   $\text{♩} = 89,999954$

2 Flauti

2 Clarinetti in A

2 Fagotti

Corno I in D

Corno II in D

Soprano I

Soprano II

Chor Soprano I II

Chor Alto I II

$\text{♩} = 84,500023$   $\text{♩} = 89,999954$

Violine I

Viola

Violoncelle

48  $\text{♩} = 84,500023$   $\text{♩} = 89,999954$

2 Flauti

2 Clarinetti in A

2 Fagotti

Corno I in D

Corno II in D

Soprano I

Soprano II

Chor Soprano I II

Chor Alto I II

$\text{♩} = 84,500023$   $\text{♩} = 89,999954$

Violine I

Viola

Violoncelle

49   ♪ = 84,500023   ♪ = 89,999954   ♪ = 84,500023   ♪ = 89,999954

2 Flauti  
2 Oboi  
2 Clarinetti in A  
2 Fagotti  
Corno I in D  
Corno II in D  
2 Trombe in D  
Timpani  
Soprano I  
Soprano II  
Chor Soprano I II  
Chor Alto I II  
Violine I  
Viola  
Violoncelle

♪ = 84,500023   ♪ = 89,999954   ♪ = 84,500023   ♪ = 89,999954

51 ♩ = 84,500023 ♩ = 89,999954 ♩ = 84,500023 ♩ = 89,999954 ♩ = 84,500023 ♩ = 89,999954

2 Flauti  
2 Oboi  
2 Clarinetti in A  
Corno I in D  
Corno II in D  
2 Trombe in D  
Timpani  
Soprano I  
Soprano II  
Chor Soprano I II  
Chor Alto I II

♩ = 84,500023 ♩ = 89,999954 ♩ = 84,500023 ♩ = 89,999954

Violine II  
Viola

Detailed description: This is a page of a musical score, page 22, starting at measure 51. The score is for a large ensemble and includes parts for 2 Flutes, 2 Oboes, 2 Clarinets in A, Corno I in D, Corno II in D, 2 Trombones in D, Timpani, Soprano I, Soprano II, Chorus Soprano I II, Chorus Alto I II, Violine II, and Viola. The key signature is three sharps (F#, C#, G#). The tempo markings at the top and bottom of the page are ♩ = 84,500023 and ♩ = 89,999954. The Flute part features a complex rhythmic pattern of eighth and sixteenth notes. The Oboe and Clarinet parts have long, sustained notes with some melodic movement. The Horns and Trombones play a steady eighth-note accompaniment. The Timpani part has a rhythmic pattern of eighth notes. The vocal parts (Soprano I, Soprano II, Chorus Soprano I II, Chorus Alto I II) have a melodic line with some sustained notes. The Violine II and Viola parts are mostly silent, with some notes appearing in the final measure.

54 ♩ = 84,500023 ♩ = 89,999995 ♩ = 84,500023 ♩ = 89,999995 ♩ = 84,500023 ♩ = 89,999995

2 Flauti

2 Oboi

2 Clarinetti in A

2 Fagotti

Corno I in D

Corno II in D

Soprano I

Soprano II

Chor Soprano I II

Chor Alto I II

Violine I

Violine II

Viola

Violoncelle

Contrabasse

58 ♩ = 84,500023 ♩ = 89,999954 ♩ = 84,500023 ♩ = 89,999954

2 Flauti

2 Oboi

2 Clarinetti in A

2 Fagotti

Corno II in D

Soprano I

Soprano II

Chor Soprano I II

Chor Alto I II

Viola

Violoncelle

Contrabasse



60  $\text{♩} = 84,500023$   $\text{♩} = 89,999954$   $\text{♩} = 84,500023$   $\text{♩} = 89,999954$

2 Flauti

2 Oboi

2 Clarinetti in A

2 Fagotti

Corno II in D

Chor Soprano I II

Chor Alto I II

$\text{♩} = 84,500023$   $\text{♩} = 89,999954$   $\text{♩} = 84,500023$   $\text{♩} = 89,999954$

Violine I

Viola

Violoncelle

62 = 84,5000 89,999954 = 84,5000 23 89,999954 = 84,50,0023 54

2 Flauti

2 Clarinetti in A

2 Fagotti

Corno I in D

Corno II in D

Soprano I

Soprano II

Chor Soprano I II

Chor Alto I II

Violine I

Violine II

Viola

Violoncelle

Contrabasse

6 = 84,5000 89,999954 = 84,5000 23 89,999954 = 84,50,0023 54

6

6

3

6

Detailed description: This is a page of a musical score, page 26. It features a variety of instruments and vocalists. The woodwind section includes two flutes, two clarinets in A, and two bassoons. The brass section consists of two horns in D. The vocal section includes two soprano parts and two choir parts (Soprano I/II and Alto I/II). The string section includes Violin I, Violin II, Viola, Cello, and Double Bass. The score is written in a key with three sharps (F#, C#, G#) and a 2/4 time signature. The tempo is marked as quarter note = 84.5. The score is divided into three measures. The first measure starts at rehearsal mark 62. The second measure contains a complex rhythmic pattern for the strings, including sixteenth-note runs and triplets. The vocal parts have lyrics in Italian, though they are not clearly legible in this image. The woodwinds and brass have sparse parts, mostly consisting of chords and single notes.

65 ♩ = 84,500023 ♩ = 89,999954 ♩ = 84,500023 ♩ = 89,999954

2 Flauti

2 Oboi

2 Clarinetti in A

2 Fagotti

Corno I in D

Corno II in D

2 Trombe in D

Timpani

Soprano I

Soprano II

Chor Soprano I II

Chor Alto I II

Violine I

Violine II

Viola

Violoncelle

Contrabasse

♩ = 84,500023 ♩ = 89,999954 ♩ = 84,500023 ♩ = 89,999954

67 ♩ = 84,500023 ♩ = 89,999954 ♩ = 84,500023 ♩ = 89,999954

2 Flauti

2 Oboi

2 Clarinetti in A

2 Fagotti

Corno I in D

Corno II in D

2 Trombe in D

Timpani

Soprano I

Soprano II

Chor Soprano I II

Chor Alto I II

Viola

Violoncelle

♩ = 84,500023 ♩ = 89,999954 ♩ = 84,500023 ♩ = 89,999954

♩ = 84,500023 ♩ = 89,999954 ♩ = 84,500023 ♩ = 89,999954 ♩ = 84,500023 ♩ = 89,999954

69

2 Flauti

2 Oboi

2 Clarinetti in A

2 Fagotti

Corno I in D

Corno II in D

2 Trombe in D

Timpani

Soprano I

Soprano II

Chor Soprano I II

Chor Alto I II

Violine I

Violine II

Viola

Violoncelle

Contrabasse

72 ♩ = 84,500023 ♩ = 89,999954 ♩ = 89,999954 ♩ = 84,500023 ♩ = 89,999954

2 Flauti

2 Clarinetti in A

2 Fagotti

Soprano I

Soprano II

Chor Soprano I II

Chor Alto I II

Violine I

Violine II

Violoncelle

Contrabasse

♩ = 84,500023 ♩ = 89,999954 ♩ = 89,999954 ♩ = 84,500023 ♩ = 89,999954

75  $\text{♩} = 84,500023$   $\text{♩} = 89,999954$   $\text{♩} = 84,500023$   $\text{♩} = 89,999954$

2 Flauti

2 Clarinetti in A

2 Fagotti

Corno I in D

Corno II in D

Soprano I

Soprano II

Chor Soprano I II

Chor Alto I II

$\text{♩} = 84,500023$   $\text{♩} = 89,999954$   $\text{♩} = 84,500023$   $\text{♩} = 89,999954$

Violine I

Violine II

Viola

Violoncelle

Contrabbasse

78 ♩ = 84,500023 ♩ = 89,999954 ♩ = 84,500023 ♩ = 89,999954

2 Flauti  
2 Clarinetti in A  
2 Fagotti  
Corno I in D  
Corno II in D  
Soprano I  
Soprano II  
Chor Soprano I II  
Chor Alto I II  
Violine I  
Violine II  
Viola  
Violoncelle  
Contrabasse

♩ = 84,500023 ♩ = 89,999954 ♩ = 84,500023 ♩ = 89,999954



81  $\text{♩} = 84,500 \text{ } \overbrace{289,9995400} \text{ } \overbrace{289,9995400} \text{ } \overbrace{289,9995400} \text{ } \overbrace{289,9995400} \text{ } \overbrace{289,9995400} \text{ } \overbrace{289,9995400} \text{ } \overbrace{289,9995400} \text{ } \overbrace{289,9995400}$

Musical score for orchestra and voices. The score includes parts for:

- 2 Flauti
- 2 Oboi
- 2 Clarinetti in A
- 2 Fagotti
- Corno I in D
- Corno II in D
- Soprano I
- Soprano II
- Chor Soprano I II
- Chor Alto I II
- Violine I
- Violine II
- Viola
- Violoncelle
- Contrabasse

86 = 84,5000231 = 84,50002354 = 84,5000254 = 84,500025400023

2 Flauti

2 Oboi

2 Clarinetti in A

2 Fagotti

Soprano I

Soprano II

Chor Soprano I II

Chor Alto I II

Violoncelle

Contrabasse

= 84,5000231 = 84,50002354 = 84,5000254 = 84,500025400023

91  $\text{♩} = 89,999954$   $\text{♩} = 84,500023$   $\text{♩} = 89,999954$

2 Clarinetti in A

Viola

Violoncelle

Contrabasse



93  $\text{♩} = 84,500023$   $\text{♩} = 89,999954$   $\text{♩} = 84,500023$   $\text{♩} = 89,999954$

2 Clarinetti in A

2 Fagotti

Soprano II

Viola

2 Clarinetti in A

2 Fagotti

Soprano II

Viola

Violoncelle

Contrabasse

95

$\text{♩} = 84,500023$   $\text{♩} = 89,999954$   $\text{♩} = 84,500023$   $\text{♩} = 89,999954$

6 3 6 3

Detailed description of the musical score: The score is for measures 95 and 96. The key signature is three sharps (F#, C#, G#). The time signature is 2/4. The Clarinet part (top) consists of two staves. The first staff has a treble clef and a key signature of three sharps. It contains a continuous sixteenth-note pattern. Above the staff, there are four groups of notes, each with a bracket and a number: '6' over the first two groups and '3' over the last two groups. The second staff has a bass clef and a key signature of three sharps. It contains chords and rests. The Soprano II part (middle) has a treble clef and a key signature of three sharps. It contains a melodic line. The Viola part (lower middle) has a bass clef and a key signature of three sharps. It contains a continuous sixteenth-note pattern. Above the staff, there are four groups of notes, each with a bracket and a number: '3' over each of the four groups. The Cello and Double Bass parts (bottom) have bass clefs and a key signature of three sharps. They contain a simple rhythmic pattern of quarter notes and rests.

2 Clarinetti in A  $\text{♩} = 84,500023$   $\text{♩} = 89,999954$   $\text{♩} = 84,500023$   $\text{♩} = 89,999954$

2 Fagotti

Soprano II

Violine I  $\text{♩} = 84,500023$   $\text{♩} = 89,999954$   $\text{♩} = 84,500023$   $\text{♩} = 89,999954$

Violine II

Viola  $\text{♩} = 84,500023$   $\text{♩} = 89,999954$   $\text{♩} = 84,500023$   $\text{♩} = 89,999954$

Violoncelle

Contrabasse

99  $\text{♩} = 84,500023$   $\text{♩} = 89,999954$

2 Flauti

2 Clarinetti in A

Soprano II

Violine I  $\text{♩} = 84,500023$   $\text{♩} = 89,999954$

Violine II

Viola

Violoncelle

Contrabasse

100 ♩ = 84,500023 ♩ = 89,999954

2 Flauti

2 Clarinetti in A

Soprano II

Violine I ♩ = 84,500023 ♩ = 89,999954

Violine II

Viola

Violoncelle

Contrabasse

101 ♪ = 84,500023 ♪ = 89,999954 ♪ = 84,500023 ♪ = 89,999954

2 Flauti

2 Clarinetti in A

2 Fagotti

Soprano II

Violine I

Violine II

Viola

Violoncelle

Contrabasse



103 ♩ = 84,500023 ♩ = 89,999954 ♩ = 84,500023 ♩ = 89,999954

2 Flauti

2 Clarinetti in A

2 Fagotti

Soprano II

Violine I

Viola

Violoncelle

Contrabbasse

105  $\text{♩} = 84,500023$   $\text{♩} = 89,999954$   $\text{♩} = 84,500023$   $\text{♩} = 89,999954$

2 Flauti

2 Oboi

2 Clarinetti in A

Soprano II

Violine I  $\text{♩} = 84,500023$   $\text{♩} = 89,999954$   $\text{♩} = 84,500023$   $\text{♩} = 89,999954$

Violine II

Viola

Violoncelle

Contrabasse

107 ♪ = 84,500023 ♪ = 89,999954 ♪ = 84,500023 ♪ = 89,999954

2 Flauti

2 Oboi

2 Clarinetti in A

Soprano II

Violine I

Violine II

Viola

Violoncelle

Contrabasse

109 ♪ = 84,500023 ♪ = 89,999954 ♪ = 84,500023 ♪ = 89,999954

2 Clarinetti in A

Soprano II

Violine I

Violine II

Viola

Violoncelle

Contrabasse

♩ = 84,500023    ♩ = 89,999954    ♩ = 84,500023    ♩ = 89,999954

111

2 Flauti

2 Oboi

2 Clarinetti in A

2 Fagotti

Soprano I

Soprano II

Violine I

Violine II

Viola

Violoncelle

Contrabbasse

113

2 Flauti

2 Oboi

2 Clarinetti in A

2 Fagotti

Soprano I

Soprano II

Violine I

Violine II

Viola

Violoncelle

Contrabasse

115  $\text{♩} = 84,500029,999954$   $\text{♩} = 84,500029,999954$   $\text{♩} = 84,500023$   $\text{♩} = 89,999954$  <sup>47</sup>

2 Fagotti

Soprano II

Viola  $\text{♩} = 84,500029,999954$   $\text{♩} = 84,500029,999954$   $\text{♩} = 84,500023$   $\text{♩} = 89,999954$

Violoncelle

Contrabasse

Detailed description of the musical score: The score is for five instruments: 2 Fagotti, Soprano II, Viola, Violoncelle, and Contrabasse. The key signature is three sharps (F#, C#, G#). The time signature is 3/4. The score is divided into three measures. The 2 Fagotti part starts with a half note chord (F#3, C#4) in the first measure, followed by a half note chord (F#3, C#4) in the second measure, and a half note chord (F#3, C#4) in the third measure. The Soprano II part has a half note (F#4) in the first measure, a half note (G#4) in the second measure, and a half note (A4) in the third measure. The Viola part has a complex rhythmic pattern with triplets. The Violoncelle part has a half note (F#2) in the first measure, a half note (G#2) in the second measure, and a half note (A2) in the third measure. The Contrabasse part has a half note (F#1) in the first measure, a half note (G#1) in the second measure, and a half note (A1) in the third measure.

118 ♩ = 84,500023 ♩ = 89,999954 ♩ = 84,500023 ♩ = 89,999954

2 Flauti

2 Oboi

2 Clarinetti in A

2 Fagotti

Soprano I

Soprano II

Violine I

Violine II

Viola

Violoncelle

Contrabbasse



120 ♩ = 84,500023 ♩ = 89,999954 ♩ = 84,500023 ♩ = 89,999954

2 Flauti

2 Oboi

2 Clarinetti in A

Soprano I

Soprano II

Violine I

Violine II

Viola

122 ♩ = 84,500023 ♩ = 89,999954 ♩ = 84,500023 ♩ = 89,999954 ♩ = 84,500023 ♩ = 89,999954

2 Flauti

2 Clarinetti in A

2 Fagotti

Corno I in D

Soprano I

Soprano II

Chor Soprano I II

Chor Alto I II

Violine I

Violoncelle

Contrabbasse

125  $\text{♩} = 84,500023$   $\text{♩} = 89,999954$   $\text{♩} = 84,500023$   $\text{♩} = 89,999954$   $\text{♩} = 84,500023$   $\text{♩} = 89,999954$   $\text{♩} = 89,999954$  <sup>51</sup>

2 Flauti

2 Clarinetti in A

2 Fagotti

Corno I in D

Soprano I

Soprano II

Chor Soprano I II

Chor Alto I II

$\text{♩} = 84,500023$   $\text{♩} = 89,999954$   $\text{♩} = 84,500023$   $\text{♩} = 89,999954$   $\text{♩} = 84,500023$   $\text{♩} = 89,999954$

Violine I

Violoncelle

Contrabasse

128

2 Flauti

2 Oboi

2 Clarinetti in A

Corno I in D

Corno II in D

2 Trombe in D

Timpani

Soprano I

Soprano II

Chor Soprano I II

Chor Alto I II

Violine I

131 ♩ = 84,500023 ♩ = 89,999995 ♩ = 84,500023 ♩ = 89,999995 ♩ = 84,500023 ♩ = 89,999995 ♩ = 84,500023 ♩ = 89,999995

2 Flauti

2 Oboi

2 Clarinetti in A

2 Fagotti

Corno I in D

Corno II in D

2 Trombe in D

Timpani

Soprano I

Soprano II

Chor Soprano I II

Chor Alto I II

Violoncelle

Contrabasse

♩ = 84,500023 ♩ = 89,999995 ♩ = 84,500023 ♩ = 89,999995 ♩ = 84,500023 ♩ = 89,999995

135  $\text{♩} = 84,500023$   $\text{♩} = 89,999977$   $\text{♩} = 89,999977$   $\text{♩} = 84,500023$   $\text{♩} = 89,999977$

2 Flauti  
2 Oboi  
2 Clarinetti in A  
2 Fagotti  
Corno I in D  
Corno II in D  
2 Trombe in D  
Timpani  
Soprano I  
Soprano II  
Chor Soprano I II  
Chor Alto I II  
Viola  
Violoncelle  
Contrabbasse

139 ♩ = 84,500023 ♩ = 89,999954 ♩ = 84,500023 ♩ = 89,999954

2 Flauti

2 Oboi

2 Clarinetti in A

2 Fagotti

Corno II in D

2 Trombe in D

Timpani

Soprano I

Soprano II

Chor Soprano I II

Chor Alto I II

Violine I

Violine II

Viola

Violoncelle

Contrabbasse

♩ = 84,500023 ♩ = 89,999954 ♩ = 84,500023 ♩ = 89,999954

141  $\text{♩} = 84,500023$   $\text{♩} = 89,999954$   $\text{♩} = 84,500023$   $\text{♩} = 89,999954$

2 Flauti

2 Clarinetti in A

2 Fagotti

Corno I in D

Soprano I

Soprano II

Chor Soprano I II

Chor Alto I II

$\text{♩} = 84,500023$   $\text{♩} = 89,999954$   $\text{♩} = 84,500023$   $\text{♩} = 89,999954$

Violine I

Violine II

Viola

Violoncelle

Contrabbasse



144 ♩ = 84,500023 ♩ = 89,999954 ♩ = 84,500023 ♩ = 89,999954

2 Flauti

2 Oboi

2 Clarinetti in A

2 Fagotti

Corno I in D

Corno II in D

2 Trombe in D

Timpani

Soprano I

Soprano II

Chor Soprano I II

Chor Alto I II

Viola

Violoncelle

Contrabbasse

♩ = 84,500023 ♩ = 89,999954 ♩ = 84,500023 ♩ = 89,999954

♩ = 84,500023   ♩ = 89,999954   ♩ = 84,500023   ♩ = 89,999954

146

2 Flauti

2 Oboi

2 Clarinetti in A

2 Fagotti

Corno I in D

Corno II in D

2 Trombe in D

Timpani

Soprano I

Soprano II

Chor Soprano I II

Chor Alto I II

Violine I

Viola

Violoncelle

Contrabbasse

148  $\text{♩} = 84,500023$   $\text{♩} = 89,999954$  59

2 Flauti

2 Clarinetti in A

2 Fagotti

Corno I in D

Soprano I

Soprano II

Chor Soprano I II

Chor Alto I II

$\text{♩} = 84,500023$   $\text{♩} = 89,999954$   $\text{♩} = 84,500023$   $\text{♩} = 89,999954$

Violine I

Violine II

Viola

Violoncelle

Contrabasse

150 ♩ = 84,50023,999954 ♩ = 84,50023,999954 ♩ = 84,500023 ♩ = 89,999954

2 Flauti  
2 Oboi  
2 Clarinetti in A  
2 Fagotti  
Corno I in D  
Soprano I  
Soprano II  
Chor Soprano I II  
Chor Alto I II  
Violine I  
Violine II  
Viola  
Violoncelle  
Contrabasse

Detailed description: This page of a musical score covers measures 150, 151, and 152. The score is divided into two systems. The first system includes woodwinds (2 Flutes, 2 Oboes, 2 Clarinets in A, 2 Bassoons), Horn I in D, and vocalists (Soprano I, Soprano II, Chorus Soprano I & II, Chorus Alto I & II). The second system includes strings (Violin I, Violin II, Viola, Violoncello, Contrabasso). The key signature has three sharps (F#, C#, G#). The time signature is 3/4. Measure 150 starts with a rest for all instruments. In measure 151, the woodwinds and strings enter with rhythmic patterns. The vocalists have melodic lines. Measure 152 continues the patterns, with some instruments holding notes across the bar line. The tempo markings at the top indicate speeds of 84.50023, 84.50023, 84.500023, and 89.999954.

♩ = 84,500023   ♩ = 89,999954   ♩ = 84,500023   ♩ = 84,500023

153

2 Flauti

2 Oboi

2 Clarinetti in A

2 Fagotti

Corno I in D

Corno II in D

Soprano I

Soprano II

Chor Soprano I II

Chor Alto I II

♩ = 84,500023   ♩ = 89,999954   ♩ = 84,500023   ♩ = 84,500023

Violine I

Violine II

Viola

Violoncelle

Contrabasse

156

2 Flauti

2 Oboi

2 Clarinetti in A

2 Fagotti

Corno I in D

Corno II in D

Soprano I

Soprano II

Chor Soprano I II

Chor Alto I II

Violine I

Violine II

Viola

Violoncelle

Contrabasse

♩ = 84,500023 ♩ = 89,999954 ♩ = 84,500023 ♩ = 89,999954



164

♩ = 84,999924 ♩ = 84,999924 ♩ = 84,999924 ♩ = 84,999924

2 Flauti

2 Oboi

2 Clarinetti in A

2 Fagotti

Soprano I

Soprano II

Chor Soprano I II

Chor Alto I II

Violoncelle

Contrabasse



♩ = 89,999954

170

2 Flauti

2 Clarinetti in A

Corno I in D

Soprano I

Violine I

Violine II

Viola

Violoncelle

Contrabasse

♩ = 89,999954

174 ♪ = 84,500023 ♪ = 89,999954 ♪ = 84,500023 ♪ = 89,99995

2 Flauti

2 Clarinetti in A

Corno I in D

Soprano I

Violine I

Violine II

Viola

Violoncelle

Contrabasse



181 ♩ = 84,500023 ♩ = 89,999954 ♩ = 84,500023 ♩ = 89,000038

2 Flauti

2 Oboi

2 Clarinetti in A

2 Fagotti

Corno I in D

♩ = 84,500023 ♩ = 89,999954 ♩ = 84,500023 ♩ = 89,000038

Violine I

Violine II

Viola

183 ♩ = 82,000038 = 86,499954 ♩ = 73,999982 ♩ = 50,000000

2 Flauti

2 Clarinetti in A

2 Fagotti

Corno I in D

Violine I ♩ = 82,000038 = 86,499954 ♩ = 73,999982 ♩ = 50,000000

Violine II

Viola

Violoncelle

Contrabasse



2 Flauti

40  $\text{♩} = 84,500023 \text{ } \text{♩} = 89,999954 \text{ } \text{♩} = 84,500023 \text{ } \text{♩} = 89,999954 \text{ } \text{♩} = 84,500023 \text{ } \text{♩} = 60,000$

46  $\text{♩} = 84,500023 = 89,999954 \text{ } \text{♩} = 89,999954 \text{ } \text{♩} = 89,999954 \text{ } \text{♩} = 89,999954 \text{ } \text{♩} = 89,999954 \text{ } \text{♩} = 89,999954$

51  $\text{♩} = 84,500023 = 89,999954 \text{ } \text{♩} = 89,999954 \text{ } \text{♩} = 89,999954 \text{ } \text{♩} = 84,500023 \text{ } \text{♩} = 84,500023$

56  $\text{♩} = 84,500023 \text{ } \text{♩} = 84,500023 \text{ } \text{♩} = 84,500023 \text{ } \text{♩} = 84,500023 \text{ } \text{♩} = 84,500023 \text{ } \text{♩} = 84,500023$

64  $\text{♩} = 84,500023 \text{ } \text{♩} = 84,500023 \text{ } \text{♩} = 89,999954 \text{ } \text{♩} = 84,500023 \text{ } \text{♩} = 84,500023$

68  $\text{♩} = 84,500023 \text{ } \text{♩} = 84,500023 \text{ } \text{♩} = 84,500023 \text{ } \text{♩} = 89,999954 \text{ } \text{♩} = 84,500023$

75  $\text{♩} = 84,500023 = 89,999954 \text{ } \text{♩} = 89,999954 \text{ } \text{♩} = 89,999954 \text{ } \text{♩} = 89,999954 \text{ } \text{♩} = 89,999954$

80  $\text{♩} = 84,500023 \text{ } \text{♩} = 84,500023 \text{ } \text{♩} = 84,500023 \text{ } \text{♩} = 84,500023 \text{ } \text{♩} = 84,500023 \text{ } \text{♩} = 84,500023$

86  $\text{♩} = 84,500023 \text{ } \text{♩} = 84,500023 \text{ } \text{♩} = 84,500023 \text{ } \text{♩} = 84,500023 \text{ } \text{♩} = 84,500023 \text{ } \text{♩} = 84,500023$

98  $\text{♩} = 84,500023 \text{ } \text{♩} = 84,500023 \text{ } \text{♩} = 89,999954 \text{ } \text{♩} = 84,500023 \text{ } \text{♩} = 89,999954$





4

2 Flauti

179 ♩ = 84,500023 ♩ = 89,999954 ♩ = 84,500023 ♩ = 89,999954 ♩ = 84,500023 ♩ = 89,999954

182 ♩ = 84,500023 ♩ = 89,000038 ♩ = 82,000038 ♩ = 86,499954 ♩ = 73,999992 ♩ = 50,000000

2 Oboi

Mendelssohn, Felix - A Midsummer Night's Dream Jean-Francois Lucai

♩ = 60, 0000000053                      ♩ = 80, 0000000059, 50000000 = 15,490

11

23

34

43

54

64

74

84

93



Mendelssohn, Felix - A Midsummer Night's Dream Jean-Francois Lucai  
2 Clarinetti in A

♩ = 60,0000000053

7

17

24

32

42

51

58

65

68

Copyright © 2001 by J.F. Lucarelli - j-f.lucarelli@infonie.be -- <http://perso.infonie.fr/espace-midi>

2 Clarinetti in A

Musical score for 2 Clarinets in A, measures 73-108. The score is written for two staves in A major (one sharp). It consists of continuous eighth and sixteenth notes, often in beamed patterns, with various fingerings and articulations indicated by numbers and symbols above or below the notes.

Measure 73:  $\text{♩} = 80,000000 = 89,999954 = 84,500023 = 89,999954 = 84,500023 = 89,999954 = 84,500023 = 89,999954$

Measure 77:  $\text{♩} = 84,500023 = 89,999954 = 84,500023 = 89,999954 = 84,500023 = 89,999954 = 84,500023 = 89,999954$

Measure 82:  $\text{♩} = 84,500023 = 89,999954 = 84,500023 = 89,999954 = 84,500023 = 89,999954 = 84,500023 = 89,999954 = 84,500023 = 89,999954 = 84,500023 = 89,999954 = 84,500023 = 89,999954 = 84,500023 = 89,999954$

Measure 91:  $\text{♩} = 89,999954$  (6),  $\text{♩} = 84,500023$  (3),  $\text{♩} = 89,999954$  (6),  $\text{♩} = 84,500023$  (3)

Measure 93:  $\text{♩} = 84,500023$  (6),  $\text{♩} = 89,999954$  (3),  $\text{♩} = 84,500023$  (6),  $\text{♩} = 89,999954$  (3)

Measure 95:  $\text{♩} = 84,500023$  (6),  $\text{♩} = 89,999954$  (3),  $\text{♩} = 84,500023$  (6),  $\text{♩} = 89,999954$  (3),  $\text{♩} = 84,500023$  (6),  $\text{♩} = 89,999954$  (3)

Measure 98:  $\text{♩} = 84,500023$  (6),  $\text{♩} = 89,999954$  (3),  $\text{♩} = 84,500023$  (6),  $\text{♩} = 89,999954$  (3),  $\text{♩} = 84,500023$  (6),  $\text{♩} = 89,999954$  (3)

Measure 101:  $\text{♩} = 84,500023$  (6),  $\text{♩} = 89,999954$  (3),  $\text{♩} = 84,500023$  (6),  $\text{♩} = 89,999954$  (3),  $\text{♩} = 84,500023$  (6),  $\text{♩} = 89,999954$  (3)

Measure 104:  $\text{♩} = 84,500023$  (3),  $\text{♩} = 89,999954$  (3),  $\text{♩} = 84,500023$  (3),  $\text{♩} = 89,999954$  (3)

Measure 108:  $\text{♩} = 84,500023$  (6),  $\text{♩} = 89,999954$  (3),  $\text{♩} = 84,500023$  (6),  $\text{♩} = 89,999954$  (3)

2 Clarinetti in A

Musical score for 2 Clarinets in A, measures 111-159. The score is written in treble clef with a key signature of three sharps (F#, C#, G#). The tempo is marked as quarter note = 84. The score consists of nine staves of music. Measures 111-112, 113-114, and 118-119 feature sixteenth-note runs with sixteenth rests, marked with '6' and '3' above the notes. Measures 121-126, 133-134, 143-144, and 147-148 feature chords and chordal textures. Measures 127-132, 135-142, 145-146, and 151-159 feature sixteenth-note runs and chordal textures. The score includes various musical notations such as slurs, ties, and rests.

4

2 Clarinetti in A

165 ♯ = 84,5 80,2 99,9 95,4 82,9 99,9 95,4 102,3 ♯ = 89,5 94,8 99,9 95,4 82,9 99,9 95,4 102,3 ♯ =

**5**

178 ♯ = 84,5 80,2 99,9 95,4 82,9 99,9 95,4 102,3 ♯ = 89,5 94,8 99,9 95,4 82,9 99,9 95,4 102,3 ♯ =





2 Fagotti

73  $\text{♩} = 84,000000 \text{ } \text{♩} = 89,999954 \text{ } \text{♩} = 89,999954 \text{ } \text{♩} = 89,999954 \text{ } \text{♩} = 84,500023$

77  $\text{♩} = 84,500023 \text{ } \text{♩} = 89,999954 \text{ } \text{♩} = 89,999954 \text{ } \text{♩} = 89,999954 \text{ } \text{♩} = 84,500023$

81  $\text{♩} = 84,500023 \text{ } \text{♩} = 89,999954 \text{ } \text{♩} = 89,999954 \text{ } \text{♩} = 84,500023 \text{ } \text{♩} = 84,500023 \text{ } \text{♩} = 84,500023 \text{ } \text{♩} = 84,500023 \text{ } \text{♩} = 84,500023 \text{ } \text{♩} = 84,500023$

89  $\text{♩} = 84,500023 \text{ } \text{♩} = 89,999954 \text{ } \text{♩} = 89,999954 \text{ } \text{♩} = 89,999954 \text{ } \text{♩} = 84,500023 \text{ } \text{♩} = 89,999954 \text{ } \text{♩} = 84,500023 \text{ } \text{♩} = 84,500023$

98  $\text{♩} = 84,500023 \text{ } \text{♩} = 89,999954 \text{ } \text{♩} = 89,999954 \text{ } \text{♩} = 84,500023 \text{ } \text{♩} = 84,500023 \text{ } \text{♩} = 84,500023 \text{ } \text{♩} = 84,500023$

110  $\text{♩} = 84,500023 \text{ } \text{♩} = 89,999954 \text{ } \text{♩} = 89,999954 \text{ } \text{♩} = 84,500023 \text{ } \text{♩} = 84,500023 \text{ } \text{♩} = 84,500023 \text{ } \text{♩} = 84,500023$

120  $\text{♩} = 84,500023 \text{ } \text{♩} = 89,999954 \text{ } \text{♩} = 89,999954 \text{ } \text{♩} = 84,500023 \text{ } \text{♩} = 89,999954 \text{ } \text{♩} = 84,500023 \text{ } \text{♩} = 89,999954$

127  $\text{♩} = 84,500023 \text{ } \text{♩} = 89,999954 \text{ } \text{♩} = 89,999954 \text{ } \text{♩} = 84,500023 \text{ } \text{♩} = 89,999954 \text{ } \text{♩} = 84,500023 \text{ } \text{♩} = 84,500023$

135  $\text{♩} = 84,500023 \text{ } \text{♩} = 89,999954 \text{ } \text{♩} = 89,999954 \text{ } \text{♩} = 84,500023 \text{ } \text{♩} = 89,999954 \text{ } \text{♩} = 84,500023 \text{ } \text{♩} = 89,999954$

142  $\text{♩} = 84,500023 \text{ } \text{♩} = 89,999954 \text{ } \text{♩} = 89,999954 \text{ } \text{♩} = 84,500023 \text{ } \text{♩} = 89,999954 \text{ } \text{♩} = 84,500023 \text{ } \text{♩} = 89,999954$

147  $\text{♩} = 84,500023 \text{♩} = 89,999954 \text{♩} = 84,500023 \text{♩} = 84,500023 \text{♩} = 89,999954 \text{♩} = 89,999954$  2 Fagotti 3

152  $\text{♩} = 84,500023 \text{♩} = 89,999954 \text{♩} = 84,500023 \text{♩} = 89,999954 \text{♩} = 84,500023 \text{♩} = 89,999954$

156  $\text{♩} = 84,500023 \text{♩} = 89,999954 \text{♩} = 84,500023 \text{♩} = 89,999954 \text{♩} = 84,500023 \text{♩} = 89,999954 \text{♩} = 84,500023 \text{♩} = 89,999954$

161  $\text{♩} = 84,500023 \text{♩} = 89,999954 \text{♩} = 84,500023 \text{♩} = 89,999954 \text{♩} = 84,500023 \text{♩} = 89,999954 \text{♩} = 84,500023 \text{♩} = 89,999954$  5

173  $\text{♩} = 89,999954 \text{♩} = 84,500023 \text{♩} = 89,999954 \text{♩} = 84,500023 \text{♩} = 89,999954 \text{♩} = 84,500023 \text{♩} = 89,999954 \text{♩} = 84,500023 \text{♩} = 89,999954$

181  $\text{♩} = 84,500023 \text{♩} = 89,999954 \text{♩} = 84,500023 \text{♩} = 89,999954 \text{♩} = 84,500023 \text{♩} = 89,999954 \text{♩} = 84,500023 \text{♩} = 89,999954$

Corno I in D Mendelssohn, Felix - A Midsummer Night's Dream Jean-Francois Lucai

♩ = 60,000000 = 86,000053

7 ♩ = 80,000000 = 59,50000000 ♩ = 81,00000000 = 84,50000000 = 95,84,50000000

18 ♩ = 84,50000000 = 84,50000000 = 84,50000000 = 84,50000000 = 84,50000000 = 84,50000000 = 84,50000000 = 84,50000000

30 ♩ = 84,50000000 = 84,50000000 = 84,50000000 = 84,50000000 = 84,50000000 = 84,50000000 = 84,50000000 = 84,50000000

42 ♩ = 84,500000 = 89,999954 = 89,999954 = 89,999954 = 89,999954 = 89,999954 = 89,999954 = 89,999954

49 ♩ = 84,500023 = 89,999954 = 89,999954 = 89,999954 = 89,999954 = 89,999954 = 89,999954 = 89,999954

54 ♩ = 84,500023 = 89,999954 = 89,999954 = 89,999954 = 89,999954 = 89,999954 = 89,999954 = 89,999954

61 ♩ = 84,500023 = 89,999954 = 84,500023 = 84,500023 = 84,500023 = 84,500023 = 84,500023 = 84,500023

69 ♩ = 84,500023 = 89,999954 = 84,500023 = 89,999954 = 84,500023 = 89,999954 = 84,500023 = 89,999954

75 ♩ = 84,500023 = 89,999954 = 84,500023 = 89,999954 = 84,500023 = 89,999954 = 84,500023 = 89,999954





Corno II in D Mendelssohn, Felix - A Midsummer Night's Dream Jean-Francois Lucai

♩ = 60, 0000000053 ♩ = 80, 00000000000000 16, 480, 00000000000000 60, 00000000000000 23954

5

16

28

40

49

54

60

68

76

83



2 Trombe in D Mendelssohn, Felix - A Midsummer Night's Dream Jean-Francois Lucai

♩ = 60, 0 0 0 8 6 0 0 0 0 5 3 ♩ = 8 0, 7 5 0 0 0 0 0 0 0 0 0 0 0 1 5, 1 9 2, 0 9 9 9 9 0, 0 0 6 5 0, 0 9 2 9 9 0 9 2 9 9 4

5

16

28

40

52

64

75

87

99

111



2

2 Trombe in D

123  $\text{♩} = 84,500023$

134  $\text{♩} = 84,500023$

145  $\text{♩} = 84,500023$

157  $\text{♩} = 84,500023$

168  $\text{♩} = 84,500023$        $\text{♩} = 89,999954$        $\text{♩} = 84,9999$

179  $\text{♩} = 84,500023$        $\text{♩} = 50,00000$

Timpani Mendelssohn, Felix - A Midsummer Night's Dream Jean-Francois Lucai

♩ = 60, 0000000053 ♩ = 80, 000000000000000015, 192, 000000000000000020, 022, 000000000000000023, 002, 000000000000000029, 002, 000000000000000034

5

16

28

40

51

60

70

82

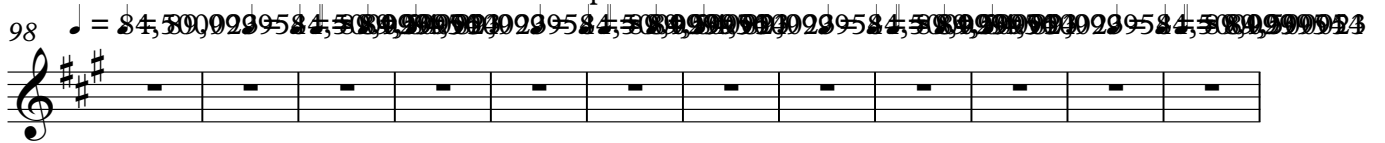
94

106





Soprano I



Mendelssohn, Felix - A Midsummer Night's Dream Jean-Francois Lucai

Soprano II

Musical staff with a treble clef, key signature of two sharps (D major), and 2/4 time signature. The staff contains a whole rest for the first measure, followed by a bracketed group of five measures with a '5' above it, and another whole rest for the final measure. The tempo/meter code is 60,000000053.

Musical staff with a treble clef, key signature of two sharps, and 2/4 time signature. It contains seven whole rests. The tempo/meter code is 84,5000229584.

Musical staff with a treble clef, key signature of two sharps, and 2/4 time signature. It contains seven whole rests. The tempo/meter code is 84,5000229584.

Musical staff with a treble clef, key signature of two sharps, and 2/4 time signature. It contains seven whole rests, followed by eighth notes in the final two measures. The tempo/meter code is 84,5000229584.

Musical staff with a treble clef, key signature of two sharps, and 2/4 time signature. It contains eighth notes in the first four measures, followed by quarter notes in the final three measures. The tempo/meter code is 84,5000229584.

Musical staff with a treble clef, key signature of two sharps, and 2/4 time signature. It contains quarter notes, quarter rests, eighth notes, and quarter notes. The tempo/meter code is 84,5000229584.

Musical staff with a treble clef, key signature of two sharps, and 2/4 time signature. It contains eighth notes, quarter notes, quarter rests, and eighth notes. The tempo/meter code is 84,5000229584.

Musical staff with a treble clef, key signature of two sharps, and 2/4 time signature. It contains eighth notes, quarter notes, quarter rests, and eighth notes. The tempo/meter code is 84,5000229584.

Musical staff with a treble clef, key signature of two sharps, and 2/4 time signature. It contains eighth notes, quarter notes, quarter rests, and eighth notes. The tempo/meter code is 84,5000229584.

Copyright © 2001 by J.F. Lucarelli - j-f.lucarelli@infonie.be -- http://perso.infonie.fr/espace-midi

Soprano II

94 ♪ = 84,50,0029,54 = ♪ = 84,50,0029,54 = ♪ = 84,50,0029,54 389,989,95007384,580,92905629,9989,400054

102 ♪ = 84,50,0029,54 689,94500,029,54 = 50,0029,0529,9989,5000734,5080,900079,9989,400054

111 ♪ = 84,50,0029,54 689,9989,999,29,95 84,500,29,95 85,900,15,00,29,54 84,50,0029,54 999

120 ♪ = 84,50,0029,54 500,999,029,54 85,50,0029,54 84,50,0029,54 389,989,500,89,9989,400054

129 ♪ = 84,50,0029,99 84,50,0029,99 84,50,0029,05 89,999,5,50,00,29,99 85,000,29,54 689,999,99

137 ♪ = 84,50,0029,54 029,999,50,0029,99 84,50,0029,99 84,50,0029,99 ♪ = 84,50,0029,54 029,999,50,0029,54

147 ♪ = 84,50,0029,54 50,0029,05 0029,99 99,999,0029,54 84,50,0029,99 84,50,0029,99

156 ♪ = 84,50,0029,54 029,999,50,0029,54 = 84,50,0029,54 029,999,50,0029,54 84,50,0029,54 029,99

165 ♪ = 84,50,0029,54 029,999,50,0029,99 54 0029 50,0029,99 54 0029 80,999,50,0029,99 54 0029,99 84,50,0029,99

5

177 ♪ = 84,50,0029,54 029,999,50,0029,54 029,999,50,0029,54 029,999,50,0029,54 029,999,50,0029,54 029,999,50,0029,99 985 = 50,000000

2

# Mendelssohn, Felix - A Midsummer Night's Dream Jean-Francois Lucal

## Chor Soprano I II

$\text{♩} = 60, \text{♩} = 80, \text{♩} = 100, \text{♩} = 120, \text{♩} = 150, \text{♩} = 180, \text{♩} = 210, \text{♩} = 240, \text{♩} = 270, \text{♩} = 300$

5

16

28

40

50

59

68

78

89

101



Chor Soprano I II

113 = 84,500029954 84,500029954 84,500029954 84,500029954 84,500029954 84,500029954 84,500029954 84,500029954 84,500029954 84,500029954 84,500029954

125 = 84,500029954 84,500029954 89,849501023 84,500029954 89,849501023 84,500029954 89,849501023 84,500029954 89,849501023 84,500029954 89,849501023

133 = 84,500029954 84,500029954 89,849501023 84,500029954 89,849501023 84,500029954 89,849501023 84,500029954 89,849501023 84,500029954 89,849501023

142 = 84,500029954 84,500029954 89,849501023 84,500029954 89,849501023 84,500029954 89,849501023 84,500029954 89,849501023 84,500029954 89,849501023

151 = 84,500029954 84,500029954 89,849501023 84,500029954 89,849501023 84,500029954 89,849501023 84,500029954 89,849501023 84,500029954 89,849501023

161 = 84,500029954 84,500029954 89,849501023 84,500029954 89,849501023 84,500029954 89,849501023 84,500029954 89,849501023 84,500029954 89,849501023

5

175 = 84,500029954 84,500029954 89,849501023 84,500029954 89,849501023 84,500029954 89,849501023 84,500029954 89,849501023 84,500029954 89,849501023

2





Violine I

Mendelssohn, Felix - A Midsummer Night's Dream Jean-Francois Lucai

Musical score for Violin I, Mendelssohn, Felix - A Midsummer Night's Dream, arranged by Jean-Francois Lucai. The score consists of 33 measures, with tempo markings alternating between quarter note = 84 and quarter note = 89. The score includes sixteenth-note patterns and sixteenth-note chords, many of which are marked with a '6' below them, indicating sixteenth notes.

Violine I

36 ♩ = 84,500023 ♩ = 89,999954 ♩ = 84,500023 ♩ = 89,999954

38 ♩ = 84,500023 ♩ = 89,999954 ♩ = 84,500023 ♩ = 89,999954 ♩ = 84,500023 ♩ = 89,999954

41 ♩ = 84,500023 ♩ = 89,999954 ♩ = 84,500023 ♩ = 89,999954 ♩ = 84,500023 ♩ = 89,999954

44 ♩ = 84,500023 ♩ = 84,500023 ♩ = 89,999954 ♩ = 84,500023 ♩ = 89,999954

48 ♩ = 84,500023 ♩ = 89,999954 ♩ = 84,500023 ♩ = 89,999954 ♩ = 84,500023 ♩ = 89,999954 ♩ = 84,500023 ♩ = 89,999954

55 ♩ = 84,500023 ♩ = 89,999954 ♩ = 84,500023 ♩ = 89,999954 ♩ = 84,500023 ♩ = 89,999954 ♩ = 84,500023 ♩ = 89,999954

64 ♩ = 84,500023 ♩ = 89,999954 ♩ = 84,500023 ♩ = 89,999954 ♩ = 84,500023 ♩ = 89,999954 ♩ = 84,500023 ♩ = 89,999954

73 ♩ = 80,000023 ♩ = 89,999954 ♩ = 84,500023 ♩ = 89,999954 ♩ = 84,500023 ♩ = 89,999954 ♩ = 84,500023 ♩ = 89,999954

82 ♩ = 84,500023 ♩ = 89,999954 ♩ = 84,500023 ♩ = 89,999954 ♩ = 84,500023 ♩ = 89,999954 ♩ = 84,500023 ♩ = 89,999954

93 ♩ = 84,500023 ♩ = 89,999954 ♩ = 84,500023 ♩ = 89,999954 ♩ = 84,500023 ♩ = 89,999954 ♩ = 84,500023 ♩ = 89,999954

Violine I

103  $\text{♩} = 84,500,023 \text{ } \text{♩} = 89,999,954 \text{ } \text{♩} = 84,500,023 \text{ } \text{♩} = 89,999,954 \text{ } \text{♩} = 84,500,023 \text{ } \text{♩} = 89,999,954 \text{ } \text{♩} = 84,500,023 \text{ } \text{♩} = 89,999,954$

111  $\text{♩} = 84,500,023 \text{ } \text{♩} = 89,999,954 \text{ } \text{♩} = 84,500,023 \text{ } \text{♩} = 89,999,954 \text{ } \text{♩} = 84,500,023 \text{ } \text{♩} = 89,999,954$

119  $\text{♩} = 84,500,023 \text{ } \text{♩} = 89,999,954 \text{ } \text{♩} = 84,500,023 \text{ } \text{♩} = 89,999,954$

122  $\text{♩} = 84,500,023 \text{ } \text{♩} = 89,999,954 \text{ } \text{♩} = 84,500,023 \text{ } \text{♩} = 89,999,954$

126  $\text{♩} = 84,500,023 \text{ } \text{♩} = 89,999,954 \text{ } \text{♩} = 84,500,023 \text{ } \text{♩} = 89,999,954$

134  $\text{♩} = 84,500,023 \text{ } \text{♩} = 89,999,954 \text{ } \text{♩} = 84,500,023 \text{ } \text{♩} = 89,999,954$

141  $\text{♩} = 84,500,023 \text{ } \text{♩} = 89,999,954 \text{ } \text{♩} = 84,500,023 \text{ } \text{♩} = 89,999,954$

148  $\text{♩} = 84,500,023 \text{ } \text{♩} = 89,999,954 \text{ } \text{♩} = 84,500,023 \text{ } \text{♩} = 89,999,954$

153  $\text{♩} = 84,500,023 \text{ } \text{♩} = 89,999,954 \text{ } \text{♩} = 84,500,023 \text{ } \text{♩} = 89,999,954$

160  $\text{♩} = 84,500,023 \text{ } \text{♩} = 89,999,954 \text{ } \text{♩} = 84,500,023 \text{ } \text{♩} = 89,999,954$

4

Violine I

173

♩ = 89,999954

♩ = 84,500023

♩ = 89,999954

175

♩ = 84,500023 89,999954 84,500023 89,999954 84,500023 89,999954 84,500023 89,999954 84,500023 89,999954

181

♩ = 84,500023 89,999954 84,500023 89,999954 84,500023 89,999954 84,500023 89,999954 84,500023 89,999954

Violine II Mendelssohn, Felix - A Midsummer Night's Dream Jean-Francois Lucai

Violin II score for Mendelssohn's *A Midsummer Night's Dream*. The score is in G major (one sharp) and 2/4 time. It consists of ten staves of music. Above the notes, there are MIDI data strings in the format:  $\text{MIDI} = \text{pitch}, \text{velocity}, \text{duration}, \dots$ . The score includes various musical notations such as rests, eighth notes, sixteenth notes, and triplets. The MIDI data provides a numerical representation of the pitch and velocity of each note.



2  
98  
108  
118  
129  
140  
146  
152  
160  
173  
175

84,500,029,954 84,500,029,954 84,500,029,954 84,500,029,954 84,500,029,954 84,500,029,954 84,500,029,954 84,500,029,954 84,500,029,954 84,500,029,954

84,500,023 89,999,954 84,500,089,999 84,500,089,999 84,500,089,999 84,500,089,999 84,500,089,999 84,500,089,999 84,500,089,999 84,500,089,999

84,500,029,954 84,500,029,954 84,500,029,954 84,500,029,954 84,500,029,954 84,500,029,954 84,500,029,954 84,500,029,954 84,500,029,954 84,500,029,954

84,500,029,954 84,500,029,954 84,500,029,954 84,500,029,954 84,500,029,954 84,500,029,954 84,500,029,954 84,500,029,954 84,500,029,954 84,500,029,954

84,500,029,954 84,500,029,954 84,500,029,954 84,500,029,954 84,500,029,954 84,500,029,954 84,500,029,954 84,500,029,954 84,500,029,954 84,500,029,954

84,500,029,954 84,500,029,954 84,500,029,954 84,500,029,954 84,500,029,954 84,500,029,954 84,500,029,954 84,500,029,954 84,500,029,954 84,500,029,954

84,500,023 89,999,954 84,500,023 89,999,954 84,500,023 89,999,954 84,500,023 89,999,954 84,500,023 89,999,954

84,500,023 89,999,954 84,500,023 89,999,954 84,500,023 89,999,954 84,500,023 89,999,954 84,500,023 89,999,954

Violine II

3

181

$\text{♩} = 84$  | 5080,2998545089,2000382,0000387,1999985 |  $\text{♩} = 64,50,000200$





Viola

3

110  $\text{♩} = 84,500023 \text{ ♩} = 89,999954 \text{ ♩} = 84,500023 \text{ ♩} = 89,999954 \text{ ♩} = 84,500023 \text{ ♩} = 89,999954$

113  $\text{♩} = 84,500023 \text{ ♩} = 89,999954 \text{ ♩} = 84,500023 \text{ ♩} = 89,999954 \text{ ♩} = 84,500023 \text{ ♩} = 89,999954$

116  $\text{♩} = 84,500023 \text{ ♩} = 89,999954 \text{ ♩} = 84,500023 \text{ ♩} = 89,999954 \text{ ♩} = 84,500023 \text{ ♩} = 89,999954$

120  $\text{♩} = 84,500023 \text{ ♩} = 89,999954 \text{ ♩} = 84,500023 \text{ ♩} = 89,999954 \text{ ♩} = 84,500023 \text{ ♩} = 89,999954$

129  $\text{♩} = 84,500023 \text{ ♩} = 89,999954 \text{ ♩} = 84,500023 \text{ ♩} = 89,999954 \text{ ♩} = 84,500023 \text{ ♩} = 89,999954$

138  $\text{♩} = 84,500023 \text{ ♩} = 89,999954 \text{ ♩} = 84,500023 \text{ ♩} = 89,999954 \text{ ♩} = 84,500023 \text{ ♩} = 89,999954$

145  $\text{♩} = 84,500023 \text{ ♩} = 89,999954 \text{ ♩} = 84,500023 \text{ ♩} = 89,999954 \text{ ♩} = 84,500023 \text{ ♩} = 89,999954$

155  $\text{♩} = 84,500023 \text{ ♩} = 89,999954 \text{ ♩} = 84,500023 \text{ ♩} = 89,999954 \text{ ♩} = 84,500023 \text{ ♩} = 89,999954$

164  $\text{♩} = 84,500023 \text{ ♩} = 89,999954$

174  $\text{♩} = 84,500023 \text{ ♩} = 89,999954 \text{ ♩} = 84,500023 \text{ ♩} = 89,999954 \text{ ♩} = 84,500023 \text{ ♩} = 89,999954$



Violoncelle Mendelssohn, Felix - A Midsummer Night's Dream Jean-Francois Lucai

♩ = 60,000000000053    ♩ = 80,000000000059,5000000000    ♩ = 15,0000000000 = 83300000

4

13

23

34

45

57

68

77

83





Contrabasse Mendelssohn, Felix - A Midsummer Night's Dream Jean-Francois Lucai

♩ = 60,000000,000053    ♩ = 80,000000000059,5000000000    ♩ = 15,0000000000 = 83300000

4

13

25

36

47

59

71

80

87

Copyright © 2001 by J.F. Lucarelli - j-f.lucarelli@infonie.be -- <http://perso.infonie.fr/espace-midi>

Contrabasse

95  $\bullet = 84,5(80)2999584,5(80)9900239,9989,5000234,5(80)9900239,9989,5000234,5(80)9900239,9989,5000234,5(80)9900239,9989,5000234$

104  $\bullet = 84,5(80)9900239,9989,5000234,5(80)9900239,9989,5000234,5(80)9900239,9989,5000234,5(80)9900239,9989,5000234,5(80)9900239,9989,5000234,5(80)9900239,9989,5000234$

114  $\bullet = 84,5(80)9900239,9989,5000234,5(80)9900239,9989,5000234,5(80)9900239,9989,5000234,5(80)9900239,9989,5000234,5(80)9900239,9989,5000234,5(80)9900239,9989,5000234,5(80)9900239,9989,5000234$

126  $\bullet = 84,5(80)9900239,9989,5000234,5(80)9900239,9989,5000234,5(80)9900239,9989,5000234,5(80)9900239,9989,5000234,5(80)9900239,9989,5000234,5(80)9900239,9989,5000234,5(80)9900239,9989,5000234$

138  $\bullet = 84,5(80)9900239,9989,5000234,5(80)9900239,9989,5000234,5(80)9900239,9989,5000234,5(80)9900239,9989,5000234,5(80)9900239,9989,5000234,5(80)9900239,9989,5000234,5(80)9900239,9989,5000234$

149  $\bullet = 84,5(80)9900239,9989,5000234,5(80)9900239,9989,5000234,5(80)9900239,9989,5000234,5(80)9900239,9989,5000234,5(80)9900239,9989,5000234,5(80)9900239,9989,5000234,5(80)9900239,9989,5000234$

159  $\bullet = 84,5(80)9900239,9989,5000234,5(80)9900239,9989,5000234,5(80)9900239,9989,5000234,5(80)9900239,9989,5000234,5(80)9900239,9989,5000234,5(80)9900239,9989,5000234,5(80)9900239,9989,5000234$

170  $\bullet = 89,999,5000239,9989,5000234,5(80)9900239,9989,5000234,5(80)9900239,9989,5000234,5(80)9900239,9989,5000234,5(80)9900239,9989,5000234,5(80)9900239,9989,5000234$

179  $\bullet = 84,5(80)9900239,9989,5000234,5(80)9900239,9989,5000234,5(80)9900239,9989,5000234,5(80)9900239,9989,5000234,5(80)9900239,9989,5000234,5(80)9900239,9989,5000234,5(80)9900239,9989,5000234$