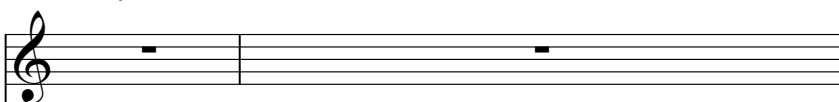


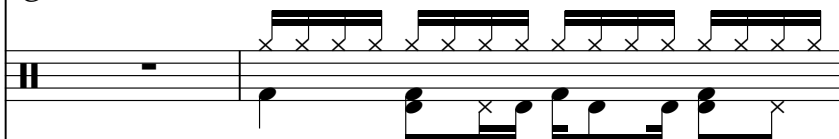
Autres - La p'tite Isa

♩ = 122,000069

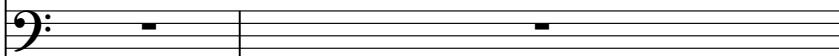
Blown Bottle



Percussion

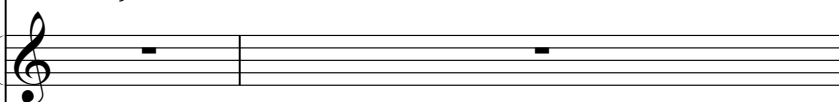


Electric Bass

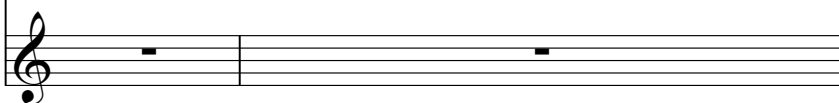


♩ = 122,000069

Tape Sampler Keyboard [Brass]



Solo



3

Perc.



5

Perc.

E. Bass



7

Perc.

E. Bass



9

B. Bottle

Perc.

E. Bass

11

B. Bottle

Perc.

E. Bass

13

B. Bottle

Perc.

E. Bass

15

B. Bottle

Perc.

E. Bass

17

B. Bottle

Perc.

E. Bass

19

B. Bottle

Perc.

E. Bass

21

B. Bottle

Perc.

E. Bass

23

B. Bottle

Perc.

E. Bass

25

Perc.

E. Bass

Solo

27

Perc.

E. Bass

Solo

29

Perc.

E. Bass

Solo

31

B. Bottle

Perc.

E. Bass

Solo

33

B. Bottle

Perc.

E. Bass

35

B. Bottle

Perc.

E. Bass

37

B. Bottle

Perc.

E. Bass

39

B. Bottle

Perc.

E. Bass

41

B. Bottle

Perc.

E. Bass

43

B. Bottle

Perc.

E. Bass

45

B. Bottle

Perc.

E. Bass

47

Perc.

E. Bass

Solo

49

Perc.

E. Bass

Solo

51

Perc.

E. Bass

Solo

53

Perc.

E. Bass

Solo

55

B. Bottle

Perc.

E. Bass

Solo

57

B. Bottle

Perc.

E. Bass

59

B. Bottle

Perc.

E. Bass

61

B. Bottle

Perc.

E. Bass

63

B. Bottle

Perc.

E. Bass

65

B. Bottle

Perc.

E. Bass

67

B. Bottle

Perc.

E. Bass

69

B. Bottle

Perc.

E. Bass

71

Perc.

E. Bass

Solo

73

Perc.

E. Bass

Solo

75

Perc.

E. Bass

Solo

77

Perc.

E. Bass

Solo

79

Perc.

E. Bass

81

Perc.

E. Bass

83

Perc.

E. Bass

Tape Smp. Brs

85

B. Bottle

Perc.

E. Bass

Tape Smp. Brs

87

B. Bottle

Perc.

E. Bass

Tape Smp. Brs

89

B. Bottle

Perc.

E. Bass

91

B. Bottle

Perc.

E. Bass

93

B. Bottle

Perc.

E. Bass

95

B. Bottle

Perc.

E. Bass

97

B. Bottle

Perc.

E. Bass

99

B. Bottle

Perc.

E. Bass

101

B. Bottle

Perc.

E. Bass

103

B. Bottle

Perc.

E. Bass

105

B. Bottle

Perc.

E. Bass

This system contains measures 105 and 106. The B. Bottle part is in treble clef with a key signature of one sharp (F#). It features a melodic line with eighth and quarter notes. The Perc. part is in a drum set notation with various rhythmic patterns. The E. Bass part is in bass clef, providing a harmonic and rhythmic foundation with eighth and quarter notes.

107

B. Bottle

Perc.

E. Bass

This system contains measures 107 and 108. The B. Bottle part continues its melodic line, including a half note and quarter notes. The Perc. part maintains its rhythmic accompaniment. The E. Bass part continues with its eighth and quarter note patterns.

109

B. Bottle

Perc.

E. Bass

This system contains measures 109 and 110. The B. Bottle part features a melodic line with eighth and quarter notes, ending with a half note. The Perc. part continues with its rhythmic accompaniment. The E. Bass part continues with its eighth and quarter note patterns.

111

B. Bottle

Perc.

E. Bass

This system contains measures 111 and 112. The B. Bottle part features a melodic line with eighth and quarter notes. The Perc. part continues with its rhythmic accompaniment. The E. Bass part continues with its eighth and quarter note patterns.

113

B. Bottle

Perc.

E. Bass

115

B. Bottle

Perc.

E. Bass

117

B. Bottle

Perc.

E. Bass

119

B. Bottle

Perc.

E. Bass

121

B. Bottle

Perc.

E. Bass

Solo

123

Perc.

E. Bass

Solo

124

Perc.

E. Bass

Solo

125

Perc.

E. Bass

Solo

126

Perc.

E. Bass

Solo

127

Perc.

E. Bass

Solo

128

Perc.

E. Bass

Solo

129

Perc.

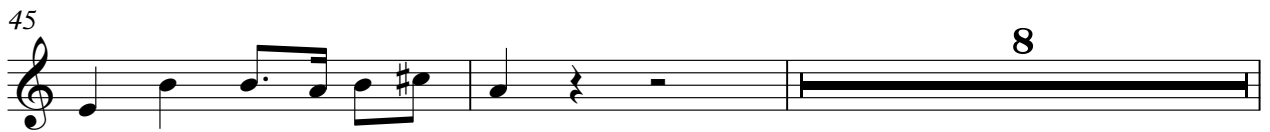
E. Bass

Solo

Blown Bottle

Autres - La p`tite Isa

♩ = 122,000069



Autres - La p`tite Isa

Percussion

♩ = 122,000069

The image displays a percussion score for the piece 'Autres - La p`tite Isa'. It consists of ten staves, numbered 1 through 20, arranged in pairs. Each staff is divided into two measures. The notation includes various rhythmic patterns, such as eighth and sixteenth notes, and rests. Above the notes, there are 'x' marks indicating specific points of interest or accents. The score is written in a standard musical notation style, with a treble clef and a common time signature. The tempo is indicated as 122,000069 beats per minute.

V.S.

Percussion

22

Two staves of musical notation. The top staff contains rhythmic notation with 'x' marks above notes, indicating percussive sounds. The bottom staff contains standard musical notation with notes and stems.

24

Two staves of musical notation. The top staff contains rhythmic notation with 'x' marks above notes. The bottom staff contains standard musical notation. A 7/8 time signature is present at the beginning of the system.

26

Two staves of musical notation. The top staff contains rhythmic notation with 'x' marks above notes. The bottom staff contains standard musical notation.

28

Two staves of musical notation. The top staff contains rhythmic notation with 'x' marks above notes. The bottom staff contains standard musical notation.

30

Two staves of musical notation. The top staff contains rhythmic notation with 'x' marks above notes. The bottom staff contains standard musical notation.

32

Two staves of musical notation. The top staff contains rhythmic notation with 'x' marks above notes. The bottom staff contains standard musical notation.

34

Two staves of musical notation. The top staff contains rhythmic notation with 'x' marks above notes. The bottom staff contains standard musical notation.

36

Two staves of musical notation. The top staff contains rhythmic notation with 'x' marks above notes. The bottom staff contains standard musical notation.

38

Two staves of musical notation. The top staff contains rhythmic notation with 'x' marks above notes. The bottom staff contains standard musical notation.

40

Two staves of musical notation. The top staff contains rhythmic notation with 'x' marks above notes. The bottom staff contains standard musical notation.

Percussion

42

Musical notation for measure 42, percussion staff. The staff shows a sequence of notes with stems pointing up and down, and 'x' marks above the notes, indicating specific percussive sounds.

44

Musical notation for measure 44, percussion staff. The staff shows a sequence of notes with stems pointing up and down, and 'x' marks above the notes, indicating specific percussive sounds.

46

Musical notation for measure 46, percussion staff. The staff shows a sequence of notes with stems pointing up and down, and 'x' marks above the notes, indicating specific percussive sounds.

48

Musical notation for measure 48, percussion staff. The staff shows a sequence of notes with stems pointing up and down, and 'x' marks above the notes, indicating specific percussive sounds.

50

Musical notation for measure 50, percussion staff. The staff shows a sequence of notes with stems pointing up and down, and 'x' marks above the notes, indicating specific percussive sounds.

52

Musical notation for measure 52, percussion staff. The staff shows a sequence of notes with stems pointing up and down, and 'x' marks above the notes, indicating specific percussive sounds.

54

Musical notation for measure 54, percussion staff. The staff shows a sequence of notes with stems pointing up and down, and 'x' marks above the notes, indicating specific percussive sounds.

56

Musical notation for measure 56, percussion staff. The staff shows a sequence of notes with stems pointing up and down, and 'x' marks above the notes, indicating specific percussive sounds.

58

Musical notation for measure 58, percussion staff. The staff shows a sequence of notes with stems pointing up and down, and 'x' marks above the notes, indicating specific percussive sounds.

60

Musical notation for measure 60, percussion staff. The staff shows a sequence of notes with stems pointing up and down, and 'x' marks above the notes, indicating specific percussive sounds.

V.S.

Percussion

62

Two staves of musical notation for measures 62 and 63. The top staff contains rhythmic notation with 'x' marks above notes, indicating specific percussive sounds. The bottom staff contains a standard musical notation with notes and stems.

64

Two staves of musical notation for measures 64 and 65. The top staff contains rhythmic notation with 'x' marks above notes. The bottom staff contains a standard musical notation with notes and stems.

66

Two staves of musical notation for measures 66 and 67. The top staff contains rhythmic notation with 'x' marks above notes. The bottom staff contains a standard musical notation with notes and stems.

68

Two staves of musical notation for measures 68 and 69. The top staff contains rhythmic notation with 'x' marks above notes. The bottom staff contains a standard musical notation with notes and stems.

70

Two staves of musical notation for measures 70 and 71. The top staff contains rhythmic notation with 'x' marks above notes. The bottom staff contains a standard musical notation with notes and stems.

72

Two staves of musical notation for measures 72 and 73. The top staff contains rhythmic notation with 'x' marks above notes. The bottom staff contains a standard musical notation with notes and stems.

74

Two staves of musical notation for measures 74 and 75. The top staff contains rhythmic notation with 'x' marks above notes. The bottom staff contains a standard musical notation with notes and stems.

76

Two staves of musical notation for measures 76 and 77. The top staff contains rhythmic notation with 'x' marks above notes. The bottom staff contains a standard musical notation with notes and stems.

78

Two staves of musical notation for measures 78 and 79. The top staff contains rhythmic notation with 'x' marks above notes. The bottom staff contains a standard musical notation with notes and stems.

80

Two staves of musical notation for measures 80 and 81. The top staff contains rhythmic notation with 'x' marks above notes. The bottom staff contains a standard musical notation with notes and stems.

82

Two staves of musical notation. The top staff contains rhythmic patterns with 'x' marks above notes. The bottom staff contains chords and notes with stems.

84

Two staves of musical notation. The top staff contains rhythmic patterns with 'x' marks above notes. The bottom staff contains chords and notes with stems.

86

Two staves of musical notation. The top staff contains rhythmic patterns with 'x' marks above notes. The bottom staff contains chords and notes with stems, including upward-pointing arrows.

88

Two staves of musical notation. The top staff contains rhythmic patterns with 'x' marks above notes. The bottom staff contains chords and notes with stems, including upward-pointing arrows.

90

Two staves of musical notation. The top staff contains rhythmic patterns with 'x' marks above notes. The bottom staff contains chords and notes with stems, including upward-pointing arrows.

92

Two staves of musical notation. The top staff contains rhythmic patterns with 'x' marks above notes. The bottom staff contains chords and notes with stems, including upward-pointing arrows.

94

Two staves of musical notation. The top staff contains rhythmic patterns with 'x' marks above notes. The bottom staff contains chords and notes with stems, including upward-pointing arrows.

96

Two staves of musical notation. The top staff contains rhythmic patterns with 'x' marks above notes. The bottom staff contains chords and notes with stems, including upward-pointing arrows.

98

Two staves of musical notation. The top staff contains rhythmic patterns with 'x' marks above notes. The bottom staff contains chords and notes with stems, including upward-pointing arrows.

100

Two staves of musical notation. The top staff contains rhythmic patterns with 'x' marks above notes. The bottom staff contains chords and notes with stems, including upward-pointing arrows.

V.S.

Musical score for Percussion, measures 102-122. The score is written on a grand staff with a treble clef and a bass clef. The notation includes various rhythmic patterns, including eighth and sixteenth notes, and rests. The score is divided into systems, with measures 102-103, 104-105, 106-107, 108-109, 110-111, 112-113, 114-115, 117-118, 119-120, and 122-123. The notation includes various rhythmic patterns, including eighth and sixteenth notes, and rests. The score is divided into systems, with measures 102-103, 104-105, 106-107, 108-109, 110-111, 112-113, 114-115, 117-118, 119-120, and 122-123.

Percussion

124

Musical notation for measure 124, percussion part. The notation is on a five-line staff with a double bar line at the beginning. The top staff contains rhythmic patterns with 'x' marks above notes, indicating percussive sounds. The bottom staff contains chords and single notes, with 'x' marks above notes indicating fretted strings. The measure is divided into two halves by a vertical bar line.

126

Musical notation for measure 126, percussion part. The notation is on a five-line staff with a double bar line at the beginning. The top staff contains rhythmic patterns with 'x' marks above notes, indicating percussive sounds. The bottom staff contains chords and single notes, with 'x' marks above notes indicating fretted strings. The measure is divided into two halves by a vertical bar line.

128

Musical notation for measure 128, percussion part. The notation is on a five-line staff with a double bar line at the beginning. The top staff contains rhythmic patterns with 'x' marks above notes, indicating percussive sounds. The bottom staff contains chords and single notes, with 'x' marks above notes indicating fretted strings. The measure is divided into two halves by a vertical bar line.

♩ = 122,000069

5



9



11



14



17



19



22



25



27



29



31



33



35



38



40



42



45



48



50



52



54



56



58



61



63



65



68



96



99



101



103



106



108



110



113



115



117

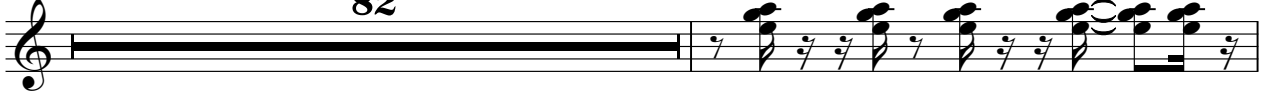


V.S.

Tape Sampler Keyboard [Brass] Autres - La p`tite Isa

♩ = 122,000069

82




84



86

44



Autres - La p`tite Isa

Solo

♩ = 122,000069

24



27



30



33

15



50



53

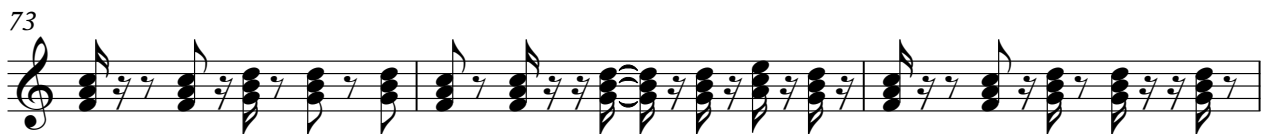


56

15



73

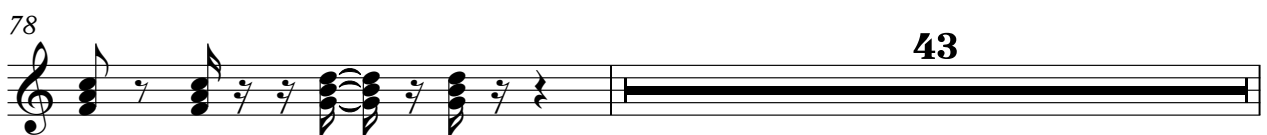


76



78

43



2

Solo

122



125



128

