

Beatles - can you take me back

♩ = 130,000137

VOCAL

BASS DRUM

GUITAR

BASS

4

VOCAL

BASS DRUM

TAMBORINE

GUITAR

BASS

6

VOCAL

BASS DRUM

TAMBORINE

GUITAR

BASS

Detailed description of the musical score for measures 6-7: The score is written for five instruments. The vocal line (treble clef) starts at measure 6 with a melodic phrase: a half note G4, a quarter note A4, a quarter note B4, a quarter note C5, a quarter note B4, a quarter note A4, a quarter note G4, and a half note F4. A slur covers the first four notes. The bass drum (snare) has a pattern of quarter notes: G4, A4, B4, C5, B4, A4, G4. The tamborine has a pattern of quarter notes: G4, A4, B4, C5, B4, A4, G4. The guitar (treble clef) plays a series of chords: G4-A4-B4, G4-A4-B4, G4-A4-B4, G4-A4-B4, G4-A4-B4, G4-A4-B4, G4-A4-B4, G4-A4-B4. The bass (bass clef) plays a series of notes: G2, A2, B2, C3, B2, A2, G2, G2, A2, B2, C3, B2, A2, G2.

8

VOCAL

BASS DRUM

TAMBORINE

GUITAR

BASS

Detailed description of the musical score for measures 8-9: The score continues for five instruments. The vocal line (treble clef) starts at measure 8 with a melodic phrase: a half note G4, a quarter note A4, a quarter note B4, a quarter note C5, a quarter note B4, a quarter note A4, a quarter note G4, and a half note F4. The bass drum (snare) has a pattern of quarter notes: G4, A4, B4, C5, B4, A4, G4. The tamborine has a pattern of quarter notes: G4, A4, B4, C5, B4, A4, G4. The guitar (treble clef) plays a series of chords: G4-A4-B4, G4-A4-B4, G4-A4-B4, G4-A4-B4, G4-A4-B4, G4-A4-B4, G4-A4-B4, G4-A4-B4. The bass (bass clef) plays a series of notes: G2, A2, B2, C3, B2, A2, G2, G2, A2, B2, C3, B2, A2, G2.

10

VOCAL

BASS DRUM

TAMBORINE

GUITAR

BASS

12

VOCAL

BASS DRUM

TAMBORINE

GUITAR

BASS

14

VOCAL

BASS DRUM

TAMBORINE

GUITAR

BASS

16

VOCAL

BASS DRUM

TAMBORINE

GUITAR

BASS

18

VOCAL

BASS DRUM

TAMBORINE

GUITAR

BASS

20

VOCAL

BASS DRUM

TAMBORINE

GUITAR

BASS

VOCAL

Beatles - can you take me back

♩ = 130,000137

2

5

9

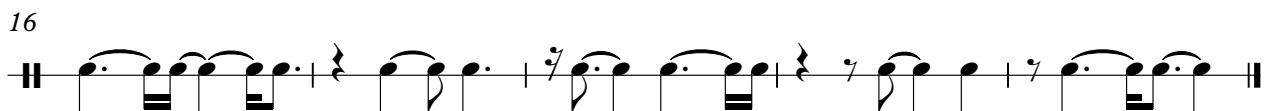
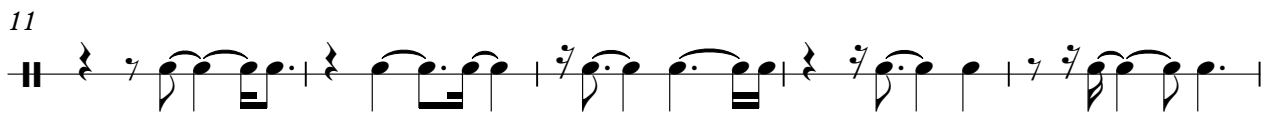
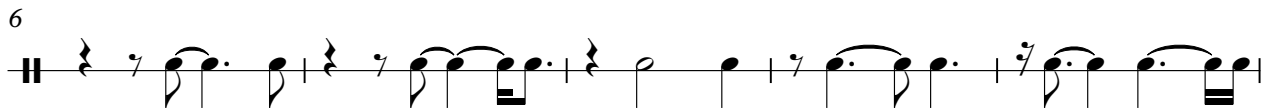
13

17

BASS DRUM

Beatles - can you take me back

♩ = 130,000137



TAMBORINE

Beatles - can you take me back

♩ = 130,000137

3

10

10

16

16

GUITAR

Beatles - can you take me back

♩ = 130,000137

4

7

10

13

16

18

