

Beatles - carrywt

♩ = 100,000000

Std Drum Set

Overdriven Gtr

Fingered E Bass

Choir Aahs 1

Choir Aahs 2

Synth Brass 2

Synth Brass 1

♩ = 100,000000

Strings 1

Piano 2

3

Std Drum Set

Fingered E Bass

Choir Aahs 1

Choir Aahs 2

Strings 1

Piano 2

||

6

Std Drum Set

Fingered E Bass

Choir Aahs 1

Choir Aahs 2

Strings 1

Piano 2

9

Std Drum Set

Musical notation for the Standard Drum Set. It features a series of rhythmic patterns including eighth notes, sixteenth notes, and a triplet of eighth notes in the final measure. There are also some rests and dynamic markings.

Fingered E Bass

Musical notation for the Fingered E Bass. It shows a sequence of notes in the bass clef, including some rests and a triplet of eighth notes in the final measure.

Choir Aahs 1

Musical notation for Choir Aahs 1. It shows a few notes in the treble clef followed by rests for the remainder of the measure.

Choir Aahs 2

Musical notation for Choir Aahs 2. It shows a few notes in the treble clef followed by rests for the remainder of the measure.

Synth Brass 2

Musical notation for Synth Brass 2. It shows rests in the first two measures, followed by a melodic line in the final measure.

Synth Brass 1

Musical notation for Synth Brass 1. It shows rests in the first two measures, followed by a chordal accompaniment in the final measure.

Strings 1

Musical notation for Strings 1. It shows a series of chords in the bass clef, with some notes moving in the final measure.

Piano 2

Musical notation for Piano 2. It shows a complex accompaniment with many notes in the treble clef, including some triplets and dynamic markings.

Std Drum Set

Musical notation for a standard drum set. It features a double bar line at the beginning, followed by a series of rhythmic patterns. The notation includes various note values and rests, with some notes marked with asterisks to indicate specific drum sounds or techniques.

Overdriven Gtr

Musical notation for an overdriven guitar. It shows a series of notes and rests, with some notes marked with a flat symbol, indicating a change in pitch or a specific effect.

Fingered E Bass

Musical notation for a fingered electric bass. It features a series of notes and rests, with some notes marked with a flat symbol, indicating a change in pitch or a specific effect.

Synth Brass 2

Musical notation for a synth brass instrument. It shows a series of notes and rests, with some notes marked with a flat symbol, indicating a change in pitch or a specific effect.

Synth Brass 1

Musical notation for a synth brass instrument. It features a series of notes and rests, with some notes marked with a flat symbol, indicating a change in pitch or a specific effect.

Strings 1

Musical notation for a string instrument. It shows a series of notes and rests, with some notes marked with a flat symbol, indicating a change in pitch or a specific effect.

Piano 2

Musical notation for a piano. It features a series of notes and rests, with some notes marked with a flat symbol, indicating a change in pitch or a specific effect.

15

Std Drum Set

Overdriven Gtr

Fingered E Bass

Choir Aahs 1

Choir Aahs 2

Strings 1

Piano 2

18

Std Drum Set

Fingered E Bass

Choir Aahs 1

Choir Aahs 2

Strings 1

Piano 2

The image shows a musical score for measures 15 through 18. The score is arranged in a system with multiple staves. The instruments are: Std Drum Set (top), Overdriven Gtr (guitar), Fingered E Bass (bass), Choir Aahs 1 and 2 (vocals), Strings 1 (strings), and Piano 2 (piano). Measure 15 starts with a double bar line. The drum set part has a rhythmic pattern of eighth notes. The guitar part has a melodic line with some bends. The bass part has a simple line. The choir parts have a vocal line. The strings part has a chordal accompaniment. The piano part has a complex accompaniment with many notes. Measure 18 starts with a double bar line. The drum set part has a different rhythmic pattern. The guitar part has a melodic line. The bass part has a simple line. The choir parts have a vocal line. The strings part has a chordal accompaniment. The piano part has a complex accompaniment with many notes.

21

Std Drum Set

Fingered E Bass

Choir Aahs 1

Choir Aahs 2

Strings 1

Piano 2

23

Std Drum Set

Fingered E Bass

Choir Aahs 1

Choir Aahs 2

Synth Brass 1

Strings 1

Piano 2

Detailed description of the musical score: The score is for page 6, measures 21-23. It features a multi-staff arrangement. The top section (measures 21-22) includes a Std Drum Set with a consistent rhythmic pattern of eighth notes and x's, a Fingered E Bass with a melodic line, two Choir Aahs parts with vocal lines, a Strings 1 part with sustained chords, and a Piano 2 part with complex chordal textures. A double bar line separates measure 22 from measure 23. The bottom section (measures 23) continues with the Std Drum Set, Fingered E Bass, and Piano 2 parts, while the Choir Aahs 1 and 2 parts have more sparse vocal lines. A Synth Brass 1 part is introduced in measure 23 with a few notes. The Strings 1 part continues with sustained chords. The Piano 2 part remains complex and rhythmic.

26

Std Drum Set

Fingered E Bass

Choir Aahs 1

Choir Aahs 2

Strings 1

Piano 2

Double bar line symbol

29

Std Drum Set

Fingered E Bass

Choir Aahs 1

Choir Aahs 2

Strings 1

Piano 2

32

Std Drum Set

Musical notation for a standard drum set. The staff uses a double bar line and a snare drum icon. It features a complex rhythmic pattern with various note values, including eighth and sixteenth notes, and rests. A triplet of eighth notes is marked with a '3' in a bracket at the end of the staff.

Fingered E Bass

Musical notation for a fingered electric bass. The staff is in bass clef and shows a sequence of notes, including some with grace notes and a triplet of eighth notes.

Choir Aahs 1

Musical notation for a choir part labeled 'Choir Aahs 1'. It begins with a vocal line and then consists of whole rests for the remainder of the measure.

Choir Aahs 2

Musical notation for a second choir part labeled 'Choir Aahs 2', following the same pattern as the first with a vocal line and whole rests.

Synth Brass 2

Musical notation for a synth brass part labeled 'Synth Brass 2'. It features a melodic line that enters in the final measure of the staff.

Synth Brass 1

Musical notation for a synth brass part labeled 'Synth Brass 1'. It consists of a series of chords and melodic fragments, including a triplet of eighth notes.

Strings 1

Musical notation for a string part labeled 'Strings 1'. It features a series of chords and melodic lines in the lower register.

Piano 2

Musical notation for a piano part labeled 'Piano 2'. It features a complex, multi-voiced texture with many notes and chords.

35

Std Drum Set

Musical notation for a standard drum set. It features a series of rhythmic patterns including eighth notes, sixteenth notes, and rests, with some notes marked with asterisks to indicate specific drum sounds.

Overdriven Gtr

Musical notation for an overdriven guitar. It shows a sequence of notes, including a half note followed by eighth notes, and a final eighth-note triplet.

Fingered E Bass

Musical notation for a fingered electric bass. It features a melodic line with eighth notes and a final half note.

Synth Brass 2

Musical notation for a synth brass instrument. It consists of a few notes, including a half note and a quarter note.

Synth Brass 1

Musical notation for a synth brass instrument. It features a complex arrangement of notes, including a half note and several eighth notes.

Strings 1

Musical notation for a string instrument. It shows a series of chords and notes, including a half note and a quarter note.

Piano 2

Musical notation for a piano. It features a complex arrangement of notes, including a half note and several eighth notes.

38

Std Drum Set

Overdriven Gtr

Fingered E Bass

Choir Aahs 1

Choir Aahs 2

Strings 1

Piano 2

41

Std Drum Set

Fingered E Bass

Choir Aahs 1

Choir Aahs 2

Strings 1

Piano 2

Detailed description of the musical score: The score is for page 10, measures 38 through 41. It features a multi-staff arrangement. The top section (measures 38-40) includes a Std Drum Set with a consistent rhythmic pattern of eighth notes and x's, an Overdriven Gtr with a melodic line in treble clef, and a Fingered E Bass with a bass line in bass clef. Below these are two staves for Choir Aahs 1 and 2, which have rests in measures 38-40 and enter in measure 41. The bottom section (measures 41-43) includes Strings 1 with sustained chords in bass clef, Piano 2 with a complex, multi-voiced texture in treble clef, and the same drum, bass, and choir parts as the top section. A double bar line is placed between measures 40 and 41.

44

Std Drum Set

Fingered E Bass

Choir Aahs 1

Choir Aahs 2

Strings 1

Piano 2



46

Std Drum Set

Fingered E Bass

Choir Aahs 1

Choir Aahs 2

Synth Brass 1

Strings 1

Piano 2

49

Std Drum Set

Fingered E Bass

Choir Aahs 1

Choir Aahs 2

Strings 1

Piano 2

52

Std Drum Set

Fingered E Bass

Choir Aahs 1

Choir Aahs 2

Strings 1

Piano 2

55

Std Drum Set

Fingered E Bass

Choir Aahs 1

Choir Aahs 2

Strings 1

Piano 2

58

Std Drum Set

Fingered E Bass

Choir Aahs 1

Choir Aahs 2

Strings 1

Piano 2

61

Std Drum Set

Fingered E Bass

Choir Aahs 1

Choir Aahs 2

Strings 1

Piano 2



64

Std Drum Set

Fingered E Bass

Choir Aahs 1

Choir Aahs 2

Strings 1

Piano 2

67

Std Drum Set

Overdriven Gtr

Fingered E Bass

Choir Aahs 1

Choir Aahs 2

Strings 1

Piano 2



69

Std Drum Set

Overdriven Gtr

Fingered E Bass

Strings 1

Piano 2

Std Drum Set Beatles - carrywt

♩ = 100,000000

5

9

13

18

22

26

29

33

38

V.S.

Std Drum Set

43

Musical notation for measure 43, featuring a drum set part with various rhythmic patterns and accents.

47

Musical notation for measure 47, featuring a drum set part with various rhythmic patterns and accents.

51

Musical notation for measure 51, featuring a drum set part with various rhythmic patterns and accents.

55

Musical notation for measure 55, featuring a drum set part with various rhythmic patterns and accents.

58

Musical notation for measure 58, featuring a drum set part with various rhythmic patterns and accents.

62

Musical notation for measure 62, featuring a drum set part with various rhythmic patterns and accents.

66

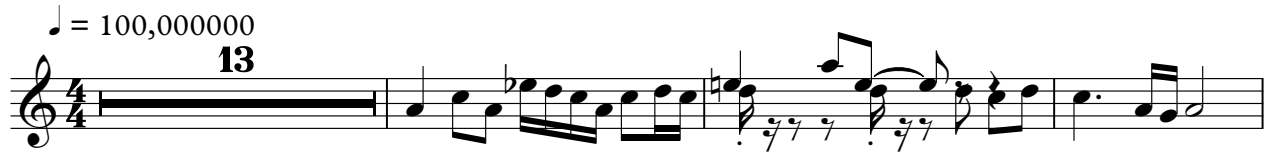
Musical notation for measure 66, featuring a drum set part with various rhythmic patterns and accents, including a triplet.

69

Musical notation for measure 69, featuring a drum set part with various rhythmic patterns and accents.

Overdriven Gtr Beatles - carrywt

♩ = 100,000000
13



17 **20**



40 **27**



69



Fingered E Bass Beatles - carrywt

♩ = 100,000000



5



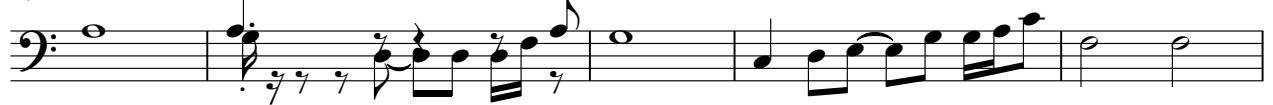
8



12



17



22



26



29



33



37



V.S.

43



48



51



54



57



60



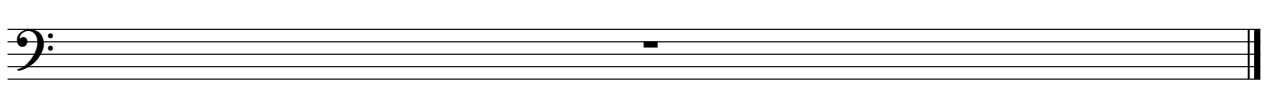
63



66



71



Choir Aahs 1

Beatles - carrywt

♩ = 100,000000

6

7

17

21

26

31

7

42

45

48



53



58



63



66



71



Choir Aahs 2

Beatles - carrywt

♩ = 100,000000

6

7

17

21

26

31

7

42

45

48



53



58



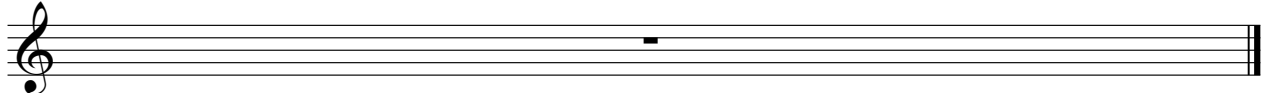
63



66



71



Synth Brass 2

Beatles - carrywt

♩ = 100,000000

10 **20**

34 **34**

71

Synth Brass 1

Beatles - carrywt

♩ = 100,000000

9

13

33

37

71

Strings 1

Beatles - carrywt

♩ = 100,000000

10

17

24

32

39

46

55

64

71

♩ = 100,000000

5

9

14

17

21

23

27

31

36

V.S.

This musical score for Piano 2 consists of ten systems of music, each with a measure number on the left. The systems are numbered 39, 43, 46, 50, 54, 58, 62, 66, and 69. Each system contains a single staff of music with a treble clef. The notation includes various rhythmic values such as eighth and sixteenth notes, as well as rests. There are several instances of fermatas and dynamic markings like 'p' (piano) and 'f' (forte). The score shows a progression of chords and melodic lines, with some systems featuring more complex textures and others being more rhythmic. The final system (69) ends with a double bar line.