

Beatles - early in the morning hi ho silver

♩ = 128,000000

VOCAL

DRUMS

♩ = 128,000000

GUITAR

♩ = 128,000000

BASS

5

VOCAL

DRUMS

GUITAR

GUITAR

BASS

7

VOCAL

DRUMS

GUITAR

GUITAR

BASS

Detailed description: This system contains measures 7 and 8. The vocal line starts with a melodic phrase in measure 7, followed by a rest in measure 8. The drums feature a consistent rhythmic pattern of eighth notes with 'x' marks above them. The first guitar part plays a rhythmic accompaniment with chords and rests. The second guitar part has a long note in measure 7 and a rest in measure 8. The bass line provides a steady eighth-note accompaniment.

9

VOCAL

DRUMS

GUITAR

GUITAR

BASS

Detailed description: This system contains measures 9 and 10. The vocal line has a triplet of eighth notes in measure 9, followed by a rest in measure 10. The drums continue with the same rhythmic pattern. The first guitar part continues with its rhythmic accompaniment. The second guitar part has a melodic line in measure 9 and a long note in measure 10. The bass line continues with its eighth-note accompaniment.

11

VOCAL
DRUMS
GUITAR
GUITAR
BASS

Detailed description: This block contains the musical notation for measures 11 and 12. It features five staves: VOCAL (treble clef), DRUMS (drum set notation), GUITAR (treble clef), GUITAR (treble clef), and BASS (bass clef). The vocal line has a melodic phrase in measure 11 and a rest in measure 12. The drums play a consistent pattern of eighth and sixteenth notes. The guitars play chords and single notes, while the bass provides a steady eighth-note accompaniment.

13

VOCAL
DRUMS
GUITAR
GUITAR
BASS

Detailed description: This block contains the musical notation for measures 13 and 14. It features five staves: VOCAL (treble clef), DRUMS (drum set notation), GUITAR (treble clef), GUITAR (treble clef), and BASS (bass clef). The vocal line has a rest in measure 13 and a single note in measure 14. The drums play a consistent pattern of eighth and sixteenth notes. The guitars play chords and single notes, while the bass provides a steady eighth-note accompaniment.

15

VOCAL

DRUMS

GUITAR

GUITAR

BASS

17

VOCAL

DRUMS

GUITAR

GUITAR

BASS

19

VOCAL

DRUMS

GUITAR

GUITAR

BASS

Detailed description: This system contains measures 19 and 20. The vocal line (treble clef) has a melodic phrase in measure 19 and a rest in measure 20. The drums (snare and bass drum) play a consistent pattern. The guitar parts (two staves, treble clef) feature a rhythmic accompaniment with chords and single notes. The bass line (bass clef) provides a steady accompaniment.

21

VOCAL

DRUMS

GUITAR

GUITAR

BASS

Detailed description: This system contains measures 21 and 22. The vocal line (treble clef) has a melodic phrase in measure 21 and a rest in measure 22. The drums (snare and bass drum) play a consistent pattern. The guitar parts (two staves, treble clef) feature a rhythmic accompaniment with chords and single notes. The bass line (bass clef) provides a steady accompaniment.

23

VOCAL

DRUMS

GUITAR

GUITAR

BASS

25

VOCAL

DRUMS

GUITAR

GUITAR

BASS

27

VOCAL

DRUMS

GUITAR

GUITAR

BASS

29

VOCAL

DRUMS

GUITAR

GUITAR

BASS

31

VOCAL

DRUMS

GUITAR

GUITAR

BASS

33

VOCAL

DRUMS

GUITAR

GUITAR

BASS

35

VOCAL

DRUMS

GUITAR

GUITAR

BASS

37

VOCAL

DRUMS

GUITAR

GUITAR

BASS

39

VOCAL

DRUMS

GUITAR

GUITAR

BASS

41

VOCAL

DRUMS

GUITAR

GUITAR

BASS

43

VOCAL

DRUMS

GUITAR

GUITAR

BASS

Detailed description: This block contains the musical notation for measures 43 and 44. It features five staves: VOCAL (treble clef), DRUMS (drum set notation), GUITAR (treble clef), GUITAR (treble clef), and BASS (bass clef). The vocal line has a melodic phrase in measure 43 and a rest in measure 44. The drums play a consistent pattern of eighth notes. The guitars play a complex, syncopated rhythm with many rests. The bass line follows a steady eighth-note pattern.

45

VOCAL

DRUMS

GUITAR

GUITAR

BASS

Detailed description: This block contains the musical notation for measures 45 and 46. It features five staves: VOCAL (treble clef), DRUMS (drum set notation), GUITAR (treble clef), GUITAR (treble clef), and BASS (bass clef). The vocal line has a melodic phrase in measure 45 and a rest in measure 46. The drums play a consistent pattern of eighth notes. The guitars play a complex, syncopated rhythm with many rests. The bass line follows a steady eighth-note pattern. A triplet of eighth notes is marked in the second guitar staff in measure 46.

47

VOCAL

DRUMS

GUITAR

GUITAR

BASS

49

VOCAL

DRUMS

GUITAR

GUITAR

BASS

51

VOCAL

DRUMS

GUITAR

GUITAR

BASS

Detailed description: This block contains the musical notation for measures 51 and 52. It features five staves: VOCAL (treble clef), DRUMS (drum set notation), GUITAR (treble clef), GUITAR (treble clef), and BASS (bass clef). The vocal line consists of eighth and quarter notes with lyrics. The drums play a consistent pattern of eighth notes. The guitars play chords and single notes, while the bass provides a steady eighth-note accompaniment.

53

VOCAL

DRUMS

GUITAR

GUITAR

BASS

Detailed description: This block contains the musical notation for measures 53 and 54. It features five staves: VOCAL (treble clef), DRUMS (drum set notation), GUITAR (treble clef), GUITAR (treble clef), and BASS (bass clef). The vocal line continues with eighth and quarter notes. The drums maintain the same eighth-note pattern. The guitars play chords and single notes, with a triplet of eighth notes in the second guitar staff in measure 54. The bass continues with eighth notes.

55

VOCAL

DRUMS

GUITAR

GUITAR

BASS

57

VOCAL

DRUMS

GUITAR

GUITAR

BASS

59

VOCAL
DRUMS
GUITAR
GUITAR
BASS

Detailed description: This system of musical notation covers measures 59 and 60. The vocal line (top) features a melodic phrase starting with a quarter note G4, followed by eighth notes A4, Bb4, and C5, with rests in between. The drum line shows a steady eighth-note pattern on the snare and bass drum. The guitar parts include a lead line with a melodic line and a rhythm line with chords and single notes. The bass line provides a steady eighth-note accompaniment.

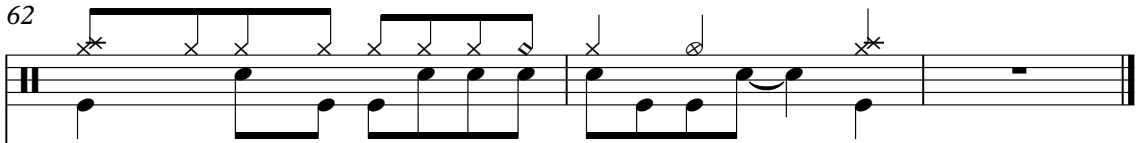
61

VOCAL
DRUMS
GUITAR
GUITAR
BASS

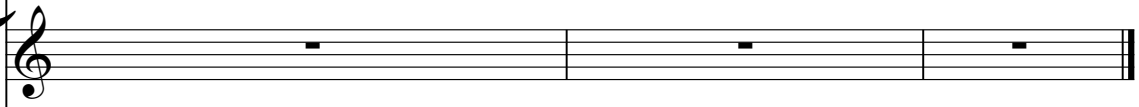
Detailed description: This system of musical notation covers measures 61 and 62. The vocal line has a short melodic phrase in measure 61 followed by a rest in measure 62. The drum line continues with a consistent eighth-note pattern. The guitar parts feature a lead line with a melodic line and a rhythm line with chords and single notes, including a triplet in measure 62. The bass line provides a steady eighth-note accompaniment.

62

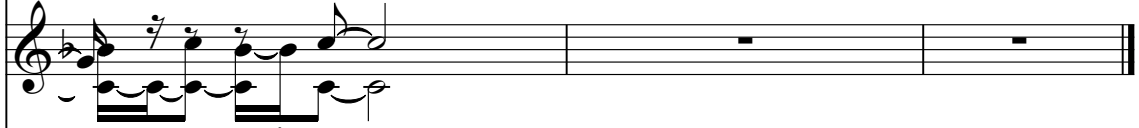
DRUMS




GUITAR



GUITAR



BASS



The image shows a musical score for measures 62, 63, and 64. The score is divided into four staves: DRUMS, GUITAR, GUITAR, and BASS. The DRUMS staff uses a standard drum notation with 'x' marks for cymbals and asterisks for snare. The first two GUITAR staves are in treble clef; the first is mostly empty, while the second contains a melodic line. The BASS staff is in bass clef and contains a few notes in the first measure.

Beatles - early in the morning hi ho silver
VOCAL

♩ = 128,000000

7

12

17

22

27

31

35

39

43



48



52



56



59



Beatles - early in the morning hi ho silver
DRUMS

♩ = 128,000000
2

6
10
14
17
21
25
29
33
37

V.S.

DRUMS

41

Musical notation for drum part 41, consisting of two staves. The top staff uses 'x' marks to denote cymbal hits, and the bottom staff uses solid notes to denote other drum sounds. The notation is organized into four measures.

45

Musical notation for drum part 45, consisting of two staves. The top staff uses 'x' marks to denote cymbal hits, and the bottom staff uses solid notes to denote other drum sounds. The notation is organized into four measures.

49

Musical notation for drum part 49, consisting of two staves. The top staff uses 'x' marks to denote cymbal hits, and the bottom staff uses solid notes to denote other drum sounds. The notation is organized into four measures.

53

Musical notation for drum part 53, consisting of two staves. The top staff uses 'x' marks to denote cymbal hits, and the bottom staff uses solid notes to denote other drum sounds. The notation is organized into four measures.

57

Musical notation for drum part 57, consisting of two staves. The top staff uses 'x' marks to denote cymbal hits, and the bottom staff uses solid notes to denote other drum sounds. The notation is organized into four measures.

61

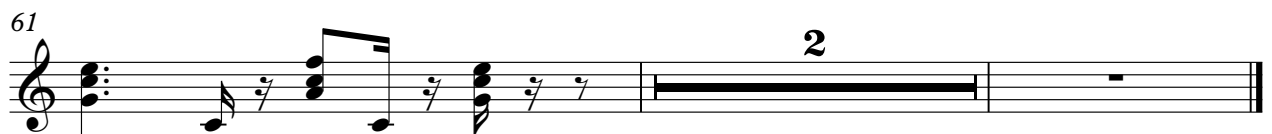
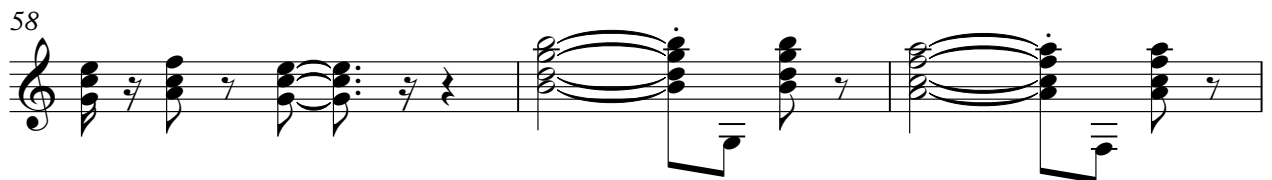
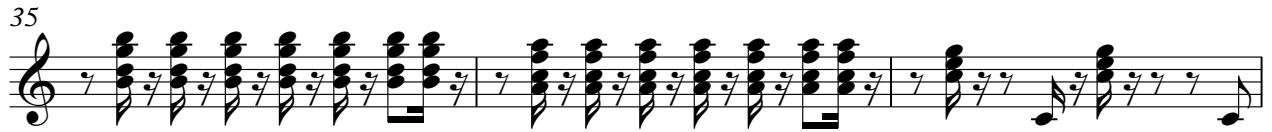
Musical notation for drum part 61, consisting of two staves. The top staff uses 'x' marks to denote cymbal hits, and the bottom staff uses solid notes to denote other drum sounds. The notation is organized into four measures.

Beatles - early in the morning hi ho silver
GUITAR

♩ = 128,000000



V.S.



Beatles - early in the morning hi ho silver
GUITAR

♩ = 128,000000

5

10

14

17

20

23

26

29

32

35

V.S.

38

42

45

48

51

54

57

60

62

Beatles - early in the morning hi ho silver
BASS

♩ = 128,000000



V.S.

34



37



41



44



47



50



53



56



59



61

