

Beatles - Got To Get You Into My Life

♩ = 140,000137

alto sax

tenor sax

trumpet

drums

chorus gt

clean gt

overdrive gt

acoustic bass

brass 2

brass 1

♩ = 140,000137

5

alto sax

tenor sax

trumpet

drums

acoustic bass

brass 2

brass 1



10

tenor sax

drums

acoustic bass

brass 2

brass 1

14

tenor sax

drums

acoustic bass

brass 2

brass 1



17

tenor sax

drums

acoustic bass

brass 2

brass 1

20

tenor sax

drums

acoustic bass

brass 2

brass 1



25

tenor sax

drums

acoustic bass

brass 2

brass 1

29

tenor sax

drums

acoustic bass

brass 2

brass 1



32

tenor sax

drums

acoustic bass

brass 2

brass 1



35

tenor sax

drums

acoustic bass

brass 2

brass 1

39

tenor sax

drums

acoustic bass

brass 2

brass 1



42

tenor sax

drums

acoustic bass

brass 2

brass 1

47

tenor sax

drums

acoustic bass

brass 2

brass 1



51

tenor sax

drums

acoustic bass

brass 2

brass 1



54

tenor sax

drums

acoustic bass

brass 2

brass 1

57

tenor sax

drums

acoustic bass

brass 2

brass 1



61

tenor sax

drums

acoustic bass

brass 2

brass 1

64

tenor sax

drums

chorus gt

clean gt

overdrive gt

acoustic bass

brass 2

brass 1

Detailed description: This system of music covers measures 64 to 67. The tenor saxophone part has a long note in measure 64. The drums play a consistent pattern of eighth notes with accents. The chorus guitar plays a blocky chordal accompaniment. The clean guitar has a melodic line with triplets in measures 65 and 67. The overdrive guitar plays a similar blocky accompaniment. The acoustic bass has a steady eighth-note bass line. Brass 2 has a melodic line with a triplet in measure 67. Brass 1 has a long note in measure 64.



68

tenor sax

drums

chorus gt

clean gt

overdrive gt

acoustic bass

brass 2

brass 1

Detailed description: This system of music covers measures 68 to 71. The tenor saxophone has a melodic line starting in measure 68. The drums continue with the eighth-note pattern. The chorus guitar plays a blocky accompaniment. The clean guitar has a melodic line with a fermata in measure 69. The overdrive guitar plays a blocky accompaniment. The acoustic bass has a steady eighth-note bass line. Brass 2 has a melodic line with a triplet in measure 70. Brass 1 has a melodic line with a triplet in measure 70.

71

tenor sax

drums

chorus gt

clean gt

overdrive gt

acoustic bass

brass 2

brass 1



74

drums

chorus gt

clean gt

overdrive gt

acoustic bass

brass 2

78

drums

chorus gt

clean gt

overdrive gt

acoustic bass



82

drums

chorus gt

clean gt

overdrive gt

acoustic bass

alto sax

Beatles - Got To Get You Into My Life

♩ = 140,000137

Musical notation for the first staff of the piece, featuring a treble clef, a key signature of two sharps (F# and C#), and a 4/4 time signature. The notation includes a tempo marking of ♩ = 140,000137. The staff contains several measures of music, including rests and notes with slurs.

4

Musical notation for the second staff of the piece, featuring a treble clef, a key signature of two sharps (F# and C#), and a 4/4 time signature. The notation includes a measure with a slur over two notes, followed by a long horizontal line with the number 80 above it, indicating a long note or a specific performance instruction.

Beatles - Got To Get You Into My Life

tenor sax

♩ = 140,000137

4

12

16

19

26

31

34

39



45



52



55



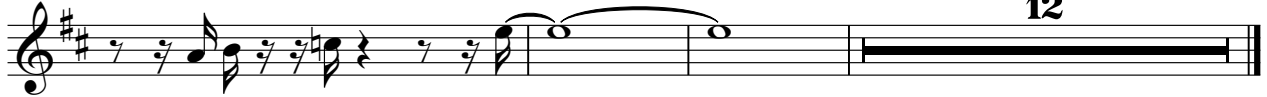
59



65



71



trumpet

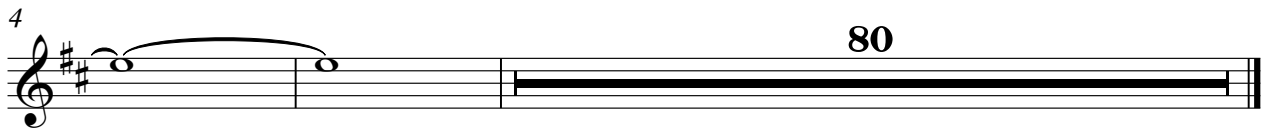
Beatles - Got To Get You Into My Life

♩ = 140,000137



A single line of musical notation for trumpet in 4/4 time. The key signature has two sharps (F# and C#). The notation starts with a whole rest in the first measure. The second measure contains eighth notes: F#4, G4, A4, B4, C#5, B4, A4, G4, F#4. The third measure contains a quarter note G4, a quarter note A4, and a quarter note B4, all beamed together with a '3' underneath indicating a triplet. The fourth measure contains a quarter note C#5, a quarter note B4, and a quarter note A4, all beamed together. The fifth measure contains a quarter note G4, a quarter note F#4, and a quarter note E4, all beamed together. The sixth measure contains a quarter note D4, a quarter note C#4, and a quarter note B3, all beamed together. The seventh measure contains a quarter note A3, a quarter note G3, and a quarter note F#3, all beamed together. The eighth measure contains a quarter note E3, a quarter note D3, and a quarter note C3, all beamed together. The piece ends with a double bar line.

4



80

A single line of musical notation for trumpet in 4/4 time. The key signature has two sharps (F# and C#). The notation starts with a quarter note F#4, a quarter note G4, and a quarter note A4, all beamed together. The second measure contains a quarter note B4, a quarter note C#5, and a quarter note B4, all beamed together. The piece ends with a double bar line. The number '4' is written above the first measure, and the number '80' is written above the second measure.

Beatles - Got To Get You Into My Life

drums

♩ = 140,000137

7

12

16

21

25

30

34

38

42

V.S.

47

52

56

60

64

69

73

77

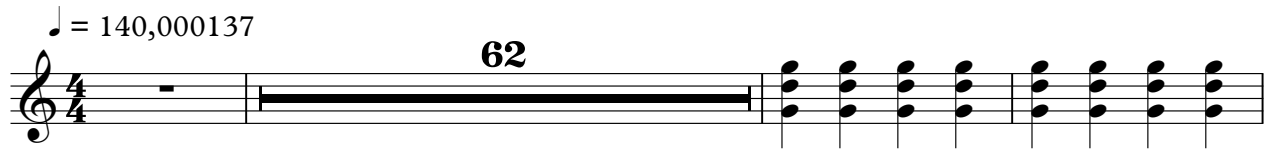
81

chorus gt

Beatles - Got To Get You Into My Life

♩ = 140,000137

62



66



70



76



81

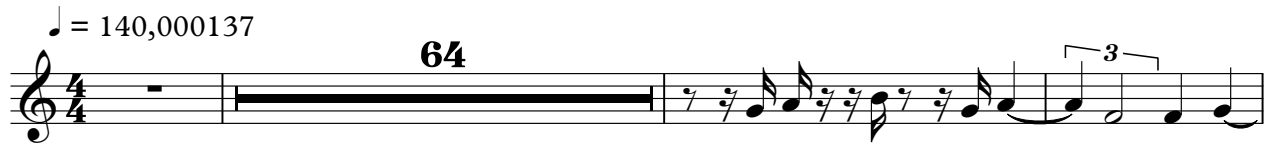


clean gt

Beatles - Got To Get You Into My Life

♩ = 140,000137

64



68



74



79



82

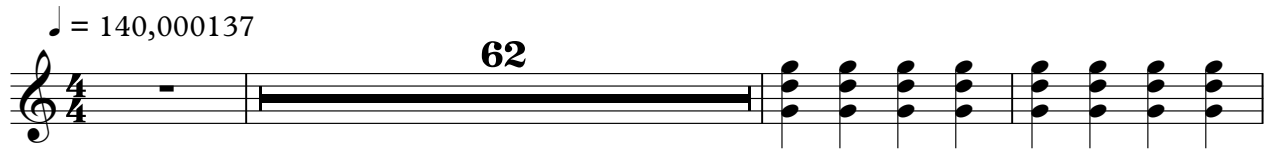


overdrive gt

Beatles - Got To Get You Into My Life

♩ = 140,000137

62



66



72



78



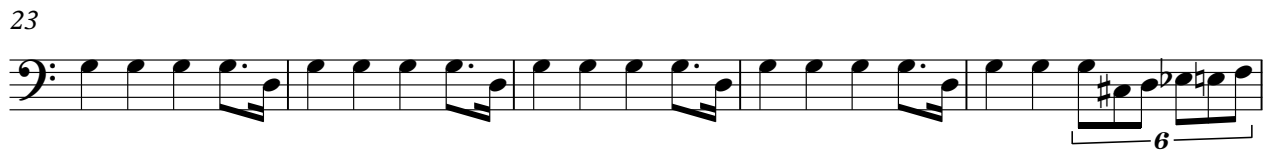
82



Beatles - Got To Get You Into My Life

acoustic bass

♩ = 140,000137



V.S.

2

acoustic bass

54



60



65



71



76



81



brass 2

Beatles - Got To Get You Into My Life

♩ = 140,000137

2

8

2

17

2

26

2

35

2

41

2

44

2

2

brass 2

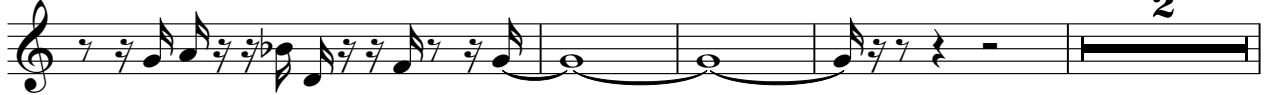
50



58



63



69



72



Beatles - Got To Get You Into My Life

brass 1

♩ = 140,000137

The image displays a musical score for the song "Got To Get You Into My Life" by The Beatles. It is divided into two main parts: a brass 1 part and a piano accompaniment. The brass 1 part is written in 4/4 time and begins with a tempo marking of 140,000137. The piano accompaniment is written in 4/4 time and consists of two staves (treble and bass clef). The score is organized into systems of four measures each, with measure numbers 8, 12, 18, 25, and 30 indicating the start of new systems. The brass 1 part features a melodic line with a triplet of eighth notes in the first system and a double bar line with a '2' above it in the second system. The piano accompaniment provides a rhythmic and harmonic foundation, with the bass line often playing a steady eighth-note pattern and the treble line playing chords and melodic fragments.

2

brass 1

39

2

46

50

50

56

56

63

63

3

70

12