

Beatles - Hard days

♩ = 144,000229 ♩ = 40,000005,000031

Std Drums

Lead Gtr Muted

Rythm 1 Muted Gtr

Rythm 2 Nylon Bk32

Fretless E. Bass

Lead Organ 3

4

Std Drums

Rythm 1 Muted Gtr

Rythm 2 Nylon Bk32

Fretless E. Bass

Lead Organ 3

7

Std Drums

Rythm 1 Muted Gtr

Rythm 2 Nylon Bk32

Fretless E. Bass

Lead Organ 3

Detailed description: This system covers measures 7, 8, and 9. The drums play a consistent pattern of eighth notes. The rhythm guitars play a series of chords, with some measures featuring a '7' indicating a seventh chord. The bass line consists of a steady eighth-note pattern. The lead organ plays a melodic line with some grace notes and a final chord.

10

Std Drums

Lead Gtr Muted

Rythm 1 Muted Gtr

Rythm 2 Nylon Bk32

Fretless E. Bass

Lead Organ 3

Detailed description: This system covers measures 10, 11, and 12. The drums continue their pattern, with a '*' symbol above the drum staff in measure 11. The lead guitar is muted and has a whole rest in measure 10, followed by a melodic phrase in measure 11. The rhythm guitars play chords, with measure 11 being a whole rest. The bass line continues with eighth notes. The lead organ plays a chordal accompaniment.

12

Std Drums

Lead Gtr Muted

Rythm 1 Muted Gtr

Rythm 2 Nylon Bk32

Fretless E. Bass

Lead Organ 3

15

Std Drums

Rythm 1 Muted Gtr

Rythm 2 Nylon Bk32

Fretless E. Bass

Lead Organ 3

18

Std Drums

Rythm 1 Muted Gtr

Rythm 2 Nylon Bk32

Fretless E. Bass

Lead Organ 3

21

Std Drums

Rythm 1 Muted Gtr

Rythm 2 Nylon Bk32

Fretless E. Bass

Lead Organ 3

23

Std Drums

Lead Gtr Muted

Rythm 1 Muted Gtr

Rythm 2 Nylon Bk32

Fretless E. Bass

Lead Organ 3

Detailed description: This system contains measures 23 and 24. The 'Std Drums' part features a consistent pattern of eighth notes with asterisks on the first and third measures. The 'Lead Gtr Muted' part has a melodic line with a sharp sign in the second measure. 'Rythm 1 Muted Gtr' and 'Rythm 2 Nylon Bk32' play complex chordal textures. The 'Fretless E. Bass' and 'Lead Organ 3' parts provide harmonic support with various chord voicings and a flat sign in the organ part.

25

Std Drums

Rythm 1 Muted Gtr

Rythm 2 Nylon Bk32

Fretless E. Bass

Lead Organ 3

Detailed description: This system contains measures 25 and 26. The 'Std Drums' part continues with the same eighth-note pattern. 'Rythm 1 Muted Gtr' and 'Rythm 2 Nylon Bk32' maintain their complex rhythmic accompaniment. The 'Fretless E. Bass' and 'Lead Organ 3' parts continue their respective parts, with the organ part featuring a flat sign in the second measure.

27

Std Drums

Rythm 1 Muted Gtr

Rythm 2 Nylon Bk32

Fretless E. Bass

Lead Organ 3

29

Std Drums

Rythm 1 Muted Gtr

Rythm 2 Nylon Bk32

Fretless E. Bass

Lead Organ 3

31

Std Drums

Rythm 1 Muted Gtr

Rythm 2 Nylon Bk32

Fretless E. Bass

Lead Organ 3

33

Std Drums

Rythm 1 Muted Gtr

Rythm 2 Nylon Bk32

Fretless E. Bass

Lead Organ 3

35

Std Drums

Rythm 1 Muted Gtr

Rythm 2 Nylon Bk32

Fretless E. Bass

Lead Organ 3

38

Std Drums

Rythm 1 Muted Gtr

Rythm 2 Nylon Bk32

Fretless E. Bass

Lead Organ 3

41

Std Drums

Rythm 1 Muted Gtr

Rythm 2 Nylon Bk32

Fretless E. Bass

Lead Organ 3

43

Std Drums

Lead Gtr Muted

Rythm 1 Muted Gtr

Rythm 2 Nylon Bk32

Fretless E. Bass

Lead Organ 3

45

Std Drums

Rythm 1 Muted Gtr

Rythm 2 Nylon Bk32

Fretless E. Bass

Lead Organ 3

47

Std Drums

Lead Gtr Muted

Rythm 2 Nylon Bk32

Fretless E. Bass

49

Std Drums

Lead Gtr Muted

Rythm 2 Nylon Bk32

Fretless E. Bass

51

Std Drums

Lead Gtr Muted

Rythm 2 Nylon Bk32

Fretless E. Bass

53

Std Drums

Lead Gtr Muted

Rythm 2 Nylon Bk32

Fretless E. Bass

Lead Organ 3

55

Std Drums

Lead Gtr Muted

Rythm 1 Muted Gtr

Rythm 2 Nylon Bk32

Fretless E. Bass

Lead Organ 3

Detailed description: This system of music covers measures 55 and 56. It features six staves. The top staff is for Standard Drums, showing a consistent rhythmic pattern with asterisks indicating specific drum sounds. The second staff is for Muted Lead Guitar, with a melodic line that includes a sharp sign. The third staff is for Muted Rhythm Guitar, showing a rhythmic accompaniment with various note values and rests. The fourth staff is for Nylon Backed Rhythm Guitar, featuring a complex chordal texture with many notes. The fifth staff is for Fretless Electric Bass, with a simple melodic line. The sixth staff is for Lead Organ 3, providing a harmonic accompaniment with chords and single notes.

57

Std Drums

Rythm 1 Muted Gtr

Rythm 2 Nylon Bk32

Fretless E. Bass

Lead Organ 3

Detailed description: This system of music covers measures 57 and 58. It features five staves. The top staff is for Standard Drums, continuing the rhythmic pattern. The second staff is for Muted Rhythm Guitar, with a rhythmic accompaniment. The third staff is for Nylon Backed Rhythm Guitar, with a complex chordal texture. The fourth staff is for Fretless Electric Bass, with a simple melodic line. The fifth staff is for Lead Organ 3, providing a harmonic accompaniment.

59

Std Drums

Rythm 1 Muted Gtr

Rythm 2 Nylon Bk32

Fretless E. Bass

Lead Organ 3

61

Std Drums

Rythm 1 Muted Gtr

Rythm 2 Nylon Bk32

Fretless E. Bass

Lead Organ 3

63

Std Drums

Rythm 1 Muted Gtr

Rythm 2 Nylon Bk32

Fretless E. Bass

Lead Organ 3

65

Std Drums

Rythm 1 Muted Gtr

Rythm 2 Nylon Bk32

Fretless E. Bass

Lead Organ 3

67

Std Drums

Rythm 1 Muted Gtr

Rythm 2 Nylon Bk32

Fretless E. Bass

Lead Organ 3

70

Std Drums

Rythm 1 Muted Gtr

Rythm 2 Nylon Bk32

Fretless E. Bass

Lead Organ 3

73

Std Drums

Lead Gtr Muted

Rythm 1 Muted Gtr

Rythm 2 Nylon Bk32

Fretless E. Bass

Lead Organ 3

76

Std Drums

Lead Gtr Muted

Rythm 1 Muted Gtr

Rythm 2 Nylon Bk32

Fretless E. Bass

Lead Organ 3

78

Std Drums

Rythm 1 Muted Gtr

Rythm 2 Nylon Bk32

Fretless E. Bass

Lead Organ 3

81

Std Drums

Lead Gtr Muted

Rythm 1 Muted Gtr

Rythm 2 Nylon Bk32

Fretless E. Bass

Lead Organ 3

84

Lead Gtr Muted

Rythm 2 Nylon Bk32

Fretless E. Bass

Detailed description: This system of music covers measures 84, 85, and 86. The lead guitar part (muted) features a rhythmic pattern of eighth notes, alternating between a pair of notes (G4 and A4) and a pair of notes (B3 and C4). The rhythm guitar (nylon) and fretless electric bass parts consist of sustained chords. The rhythm guitar plays a chord of G4, B3, and C4, while the fretless electric bass plays a chord of G3, B2, and C3. The key signature is one sharp (F#).

87

Lead Gtr Muted

Rythm 2 Nylon Bk32

Fretless E. Bass

Detailed description: This system of music covers measures 87, 88, and 89. The lead guitar part (muted) features a rhythmic pattern of eighth notes, alternating between a pair of notes (G4 and A4) and a pair of notes (B3 and C4). The rhythm guitar (nylon) and fretless electric bass parts consist of sustained chords. The rhythm guitar plays a chord of G4, B3, and C4, while the fretless electric bass plays a chord of G3, B2, and C3. The key signature is one sharp (F#).

Std Drums

Beatles - Hard days

♩ = 144,000229 ♩ = 145,000080

The image displays a musical score for standard drums, consisting of ten staves of notation. The score is written in 4/4 time. The first two staves are marked with measure numbers 6 and 10. The notation includes various rhythmic patterns, such as eighth and sixteenth notes, and rests. Asterisks (*) are placed above certain notes to indicate accents. The score is presented in a clean, black-and-white format.

V.S.

42

46

50

54

58

62

66

70

74

78

Std Drums

81

7

Beatles - Hard days

Lead Gtr Muted

♩ = 144,000229 ♩ = 40,0000000031

9 10

23 18

44 2

49

53

57 18 4

82

86

Beatles - Hard days

Rythm 1 Muted Gtr

♩ = 144, 000229, ♯ = 4045, 000031

6

10

14

18

22

26

30

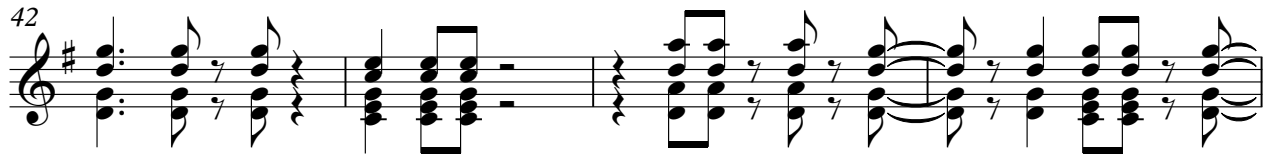
34

38

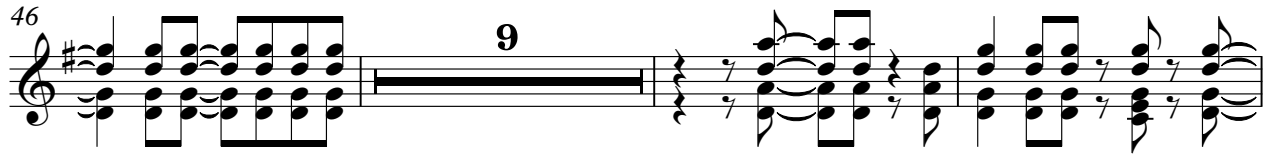
V.S.

Rythm 1 Muted Gtr

42



46



58



62



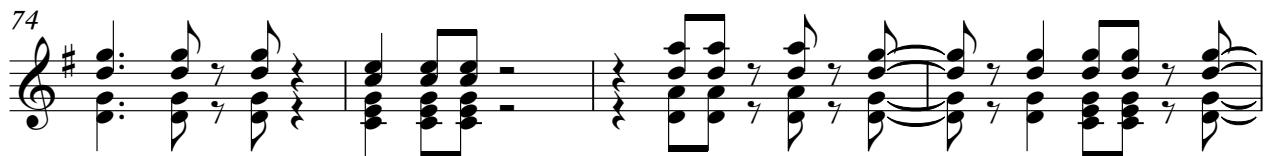
66



70



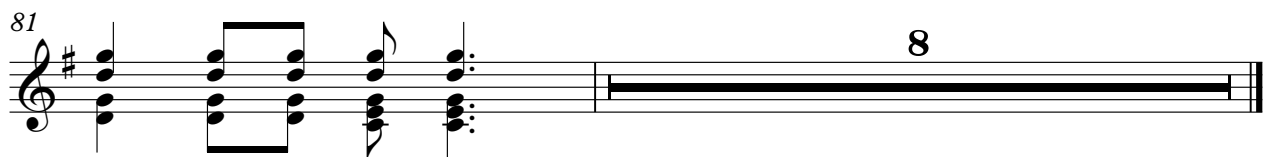
74



78



81



♩ = 144,000229 ♩ = 40,5,0000031

6

10

14

18

22

26

30

33

37

V.S.

Detailed description: This is a guitar rhythm sheet for the song 'Hard Days Coming' by The Beatles. It is written for nylon string guitar in 4/4 time. The key signature has one sharp (F#). The score consists of ten staves of music, each starting with a measure number (6, 10, 14, 18, 22, 26, 30, 33, 37). The music is characterized by a complex, driving rhythmic pattern. The first staff includes a tempo marking: a quarter note equals 144,000229 and a half note equals 40,5,0000031. The notation features numerous beamed eighth and sixteenth notes, often with ties between measures, creating a dense and intricate texture. The piece concludes with a 'V.S.' (Vivace) marking.

42

46

50

55

59

63

66

70

75

79

83

The musical notation consists of a single staff with a treble clef and a key signature of one sharp (F#). The piece begins with a series of chords, each marked with a slur and a tie to the next. The chords are: C major (x0231), D major (x0202), E major (x0132), F# major (x0123), G major (x0232), A major (x0203), B major (x0123), and C major (x0231). The notation uses a combination of standard chord symbols and guitar-specific symbols like 'x' for muted strings and '0' for open strings. The piece ends with a double bar line.

Fretless E. Bass Beatles - Hard days

♩ = 144,000229 ♩ = 405,000003 1

7

12

17

23

29

35

41

46

51

V.S.

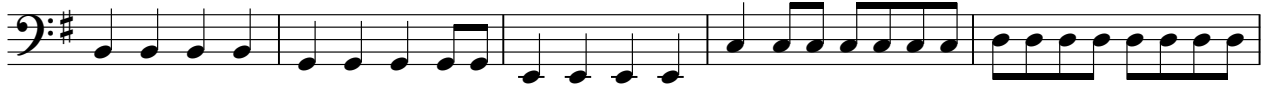
2

Fretless E. Bass

56



62



67



73



78



83



Lead Organ 3

Beatles - Hard days

♩ = 144,000229 ♩ = 40,000,000031

6

11

15

20

24

29

35

40

44

7

54

58

64

69

74

78

81