

Beatles - I Need You

♩ = 135,000137

Sax Tenor (Voice)

Loose Kick

Maracas

Low Conga

Open Hi Conga

Steel String

Steel String

Bass

Lead 5

♩ = 135,000137



6

Sax Tenor (Voice)

Loose Kick

Maracas

Low Conga

Open Hi Conga

Steel String

Steel String

Bass

Lead 5

11

Sax Tenor (Voice)

Loose Kick

Maracas

Low Conga

Open Hi Conga

Steel String

Steel String

Bass

Lead 5



16

Sax Tenor (Voice)

Loose Kick

Maracas

Low Conga

Open Hi Conga

Steel String

Steel String

Bass

Lead 5

21

Sax Tenor (Voice)

Loose Kick

Maracas

Low Conga

Open Hi Conga

Steel String

Steel String

Bass

Lead 5



26

Sax Tenor (Voice)

Loose Kick

Maracas

Low Conga

Open Hi Conga

Steel String

Steel String

Bass

Lead 5

31

Sax Tenor (Voice)

Loose Kick

Maracas

High Bong

Low Conga

Open Hi Conga

Steel String

Steel String

Bass

Lead 5



35

Sax Tenor (Voice)

Loose Kick

Maracas

High Bong

Low Conga

Open Hi Conga

Steel String

Steel String

Bass

Lead 5

39

Sax Tenor (Voice)

Loose Kick

Maracas

High Bong

Low Conga

Open Hi Conga

Steel String

Steel String

Bass

Lead 5



43

Sax Tenor (Voice)

Loose Kick

Maracas

Low Conga

Open Hi Conga

Steel String

Steel String

Bass

Lead 5

48

Sax Tenor (Voice)

Loose Kick

Maracas

Low Conga

Open Hi Conga

Steel String

Steel String

Bass

Lead 5



53

Sax Tenor (Voice)

Loose Kick

Maracas

High Bong

Low Conga

Open Hi Conga

Steel String

Steel String

Bass

Lead 5

57

Sax Tenor (Voice)

Loose Kick

Maracas

High Bong

Low Conga

Open Hi Conga

Steel String

Steel String

Bass

Lead 5



61

Sax Tenor (Voice)

Loose Kick

Maracas

High Bong

Low Conga

Open Hi Conga

Steel String

Steel String

Bass

Lead 5

65

Sax Tenor (Voice)

Loose Kick

Maracas

Low Conga

Open Hi Conga

Steel String

Steel String

Bass

Lead 5



70

Sax Tenor (Voice)

Loose Kick

Maracas

Low Conga

Open Hi Conga

Steel String

Steel String

Bass

Lead 5



75

Sax Tenor (Voice)

Loose Kick

Maracas

Low Conga

Open Hi Conga

Steel String

Steel String

Bass

Lead 5



80

Sax Tenor (Voice)

Loose Kick

Maracas

Low Conga

Open Hi Conga

Steel String

Steel String

Bass

Lead 5

Sax Tenor (Voice)

Beatles - I Need You

♩ = 135,000137

2

7

12

18

23

28

32

36

40

Sax Tenor (Voice)

44

49

54

58

63

68

73

77

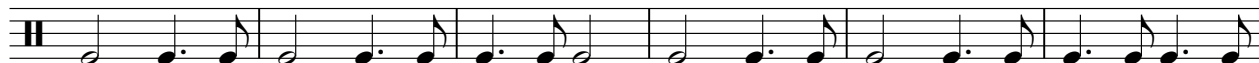
Loose Kick

Beatles - I Need You

♩ = 135,000137



7



13



19



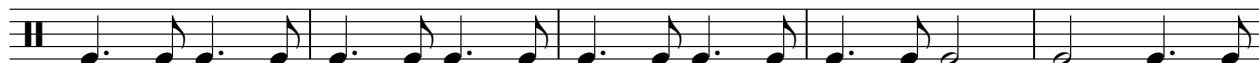
25



31



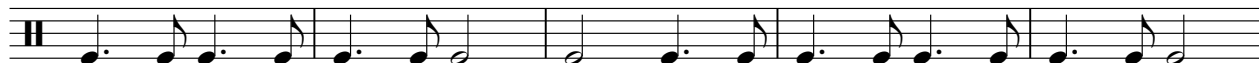
37



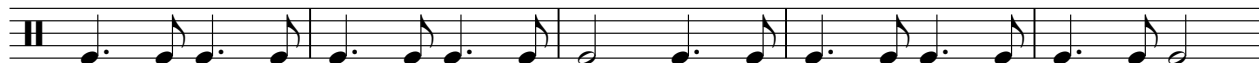
42



48



53



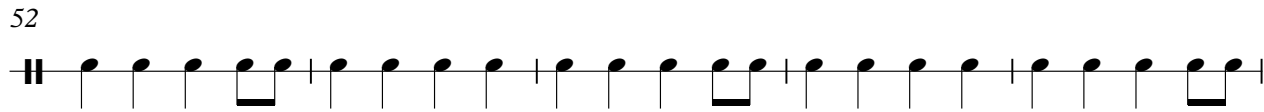
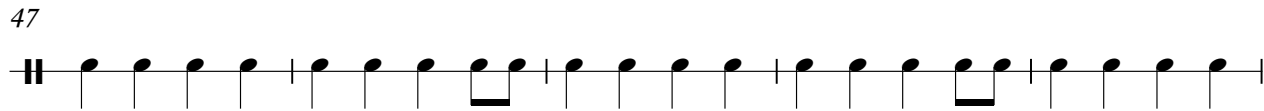
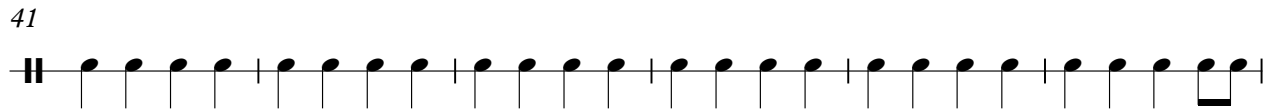
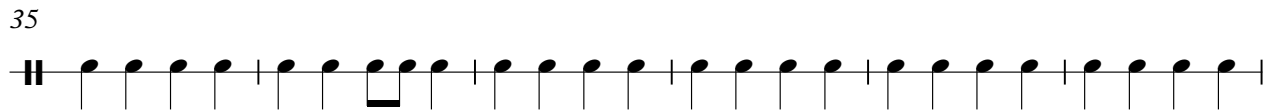
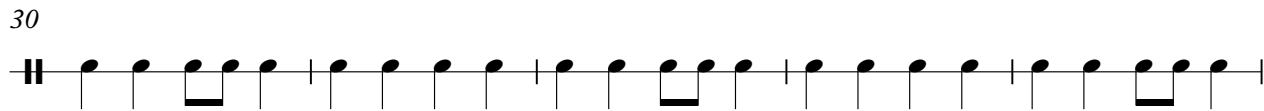
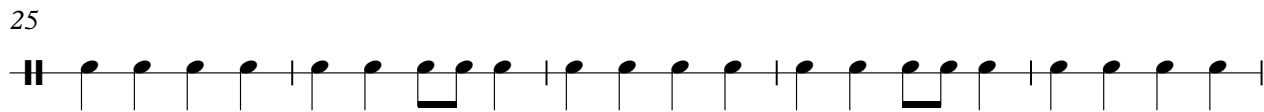
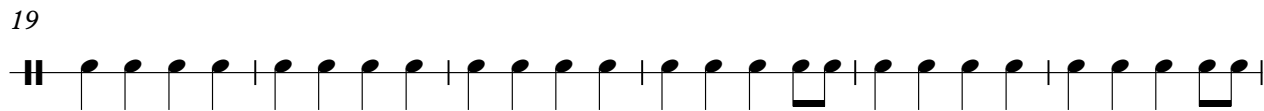
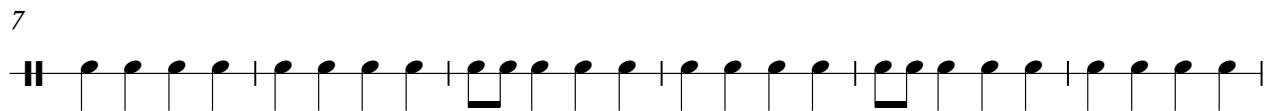
V.S.



Maracas

Beatles - I Need You

♩ = 135,000137



V.S.

2

# Maracas

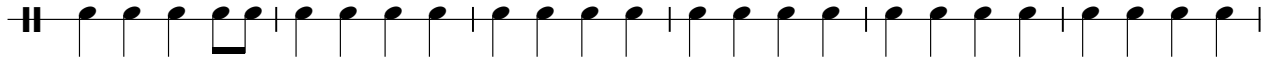
57



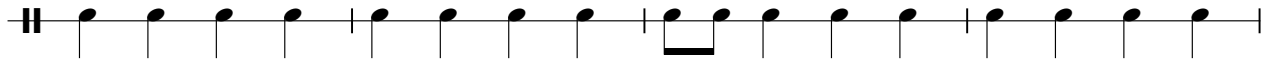
63



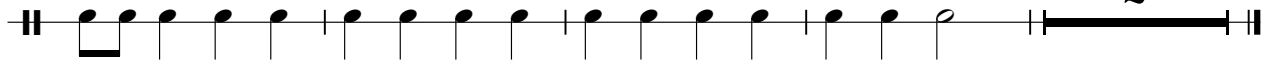
69



75



79



High Bong

Beatles - I Need You

♩ = 135,000137

**30**

33

37

40

**14**

56

59

61

**22**



Low Conga

Beatles - I Need You

♩ = 135,000137

2

8

14

20

26

32

38

44

50

56

V.S.

Low Conga

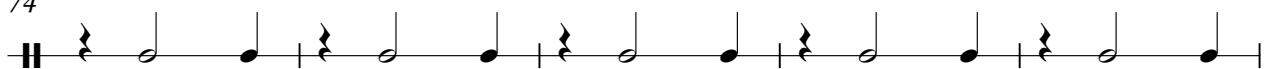
62



68



74



79



Open Hi Conga

Beatles - I Need You

♩ = 135,000137



V.S.

2

# Open Hi Conga

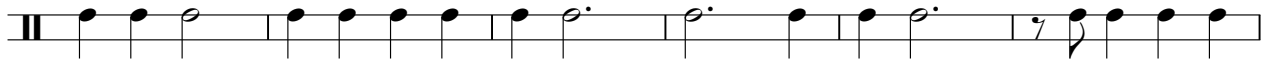
60



66



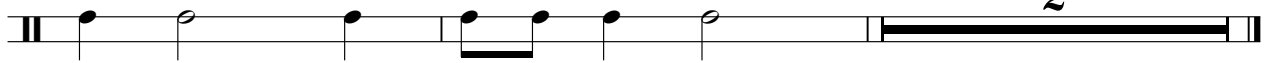
71



77



81



Steel String

Beatles - I Need You

♩ = 135,000137

6

11

16

21

26

31

36

41

47

V.S.

52



57



63



68



73



78



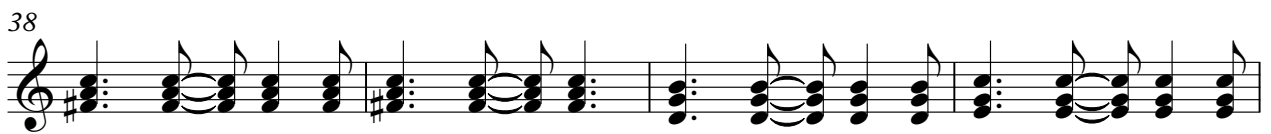
81



Steel String

Beatles - I Need You

♩ = 135,000137



V.S.

42



46



50



54



58



63



67



71



75



80

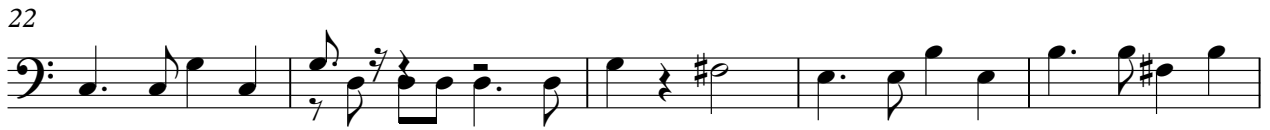




# Beatles - I Need You

Bass

♩ = 135,000137



V.S.



# Beatles - I Need You

## Lead 5

♩ = 135,000137

6

12

19

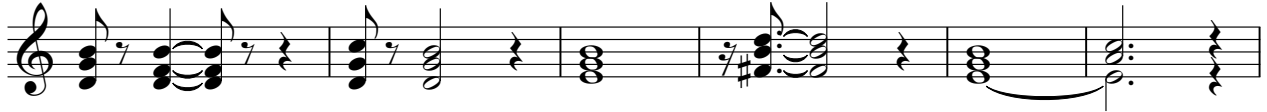
24

30

37

42

46



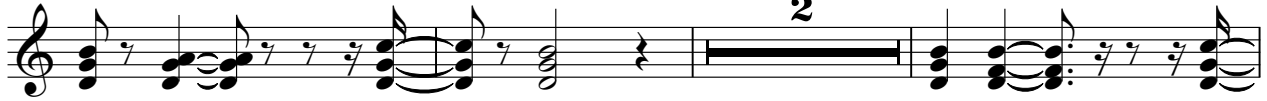
52



58



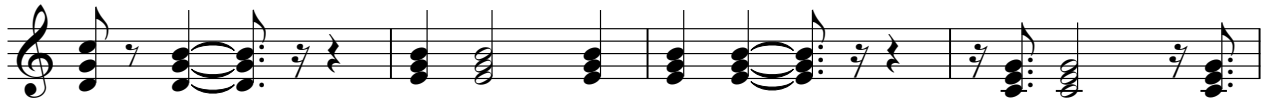
65



70



76



80

