

Beatles - let them in

♩ = 88,000023

Piccolo

Piccolo in D \flat

Flute

Percussion

Back Vocal

Vibraphone

Electric Bass

Lead 3 (Calliope)

Solo

DO NOT DUPLICATE THIS FOR REUSEAL.

(C) 1994 Tune 1000 Corporation ;1976, MPL Com. Ltd.
(C) 1994 Tune 1000 Corporation ;1976, MPL Com. Ltd.

2

4

Perc. 


Vib. 


E. Bass 

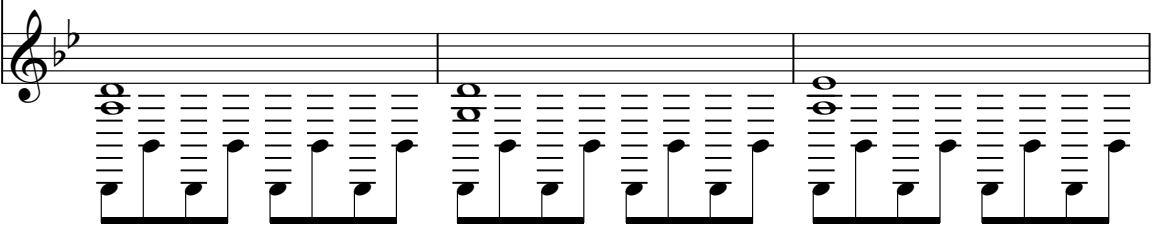
Solo 



8


Perc. 


E. Bass 

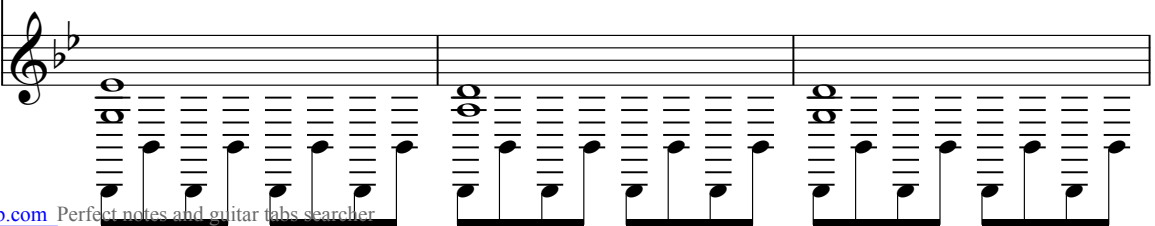
Solo 



11

Perc. 

E. Bass 

Solo 

14

Fl.

Perc.

Vib.

E. Bass

Solo

Someonesnoockattloor, sohed ysingr'bell. Somonesnoockattloor,

==

17

Fl.

Perc.

Vib.

E. Bass

Solo

sohed ysingr'bell. Dnea fa vor, o petitor anderin,

20

Fl.

Perc.

Vib.

E. Bass

Lead 3

Solo

ooh yeah. Somend'snockattloor,

23

Fl.

Perc.

Vib.

E. Bass

Lead 3

Solo

someod yingthbell. Somend'snockattloor, someod yingthbell.

26

Fl.

Perc.

Vib.

E. Bass

Solo

29

Fl.

Perc.

Vib.

E. Bass

Solo

31

Perc.


E. Bass

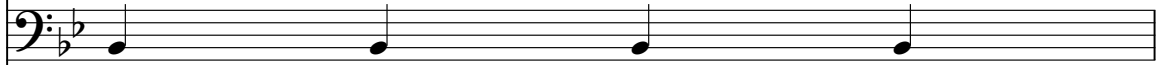
Solo

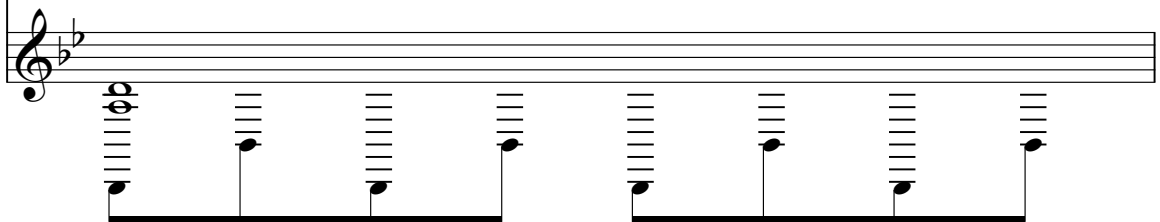
Dnea fa vor, o pethooor an'emin, yeah,


let'emin.

32


Perc. 

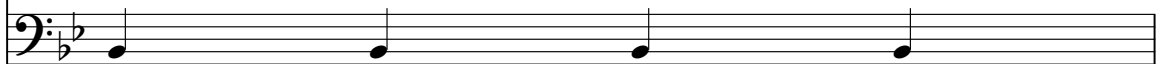
E. Bass 

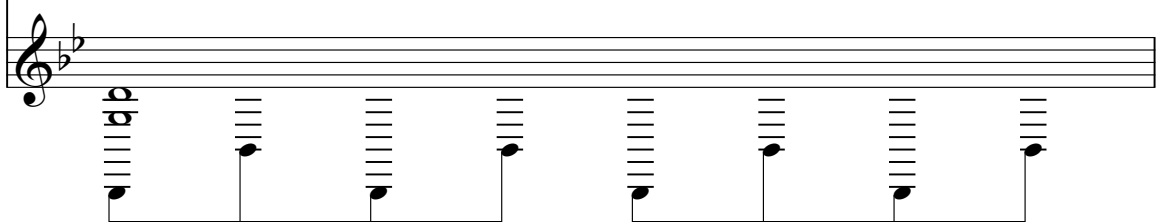
Solo 




33

Perc. 


E. Bass 

Solo 

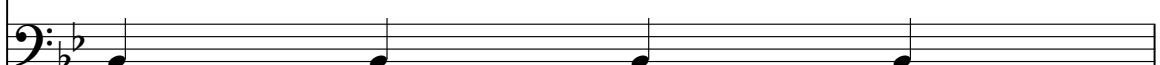


34

Picc. 

D \flat Picc. 

Perc. 

E. Bass 

Solo 

35

Picc.

D \flat Picc.

Perc.

E. Bass

Solo



36

Picc.

D \flat Picc.

Perc.

E. Bass

Solo

37

Picc.

D \flat Picc.

Perc.

E. Bass

Solo

3



38

Fl.

Perc.

Vib.

Sis ter Su zie, Broth er

E. Bass

Solo

3

Beatles - let them in
Piccolo

♩ = 88,000023

2 28

34

36

2

(C) 1994 Tune 1000 Corporation ;1976, MPL Com. Ltd.
(C) 1994 Tune 1000 Corporation ;1976, MPL Com. Ltd.

Beatles - let them in
Piccolo in D \flat

$\text{♩} = 88,000023$

2 28

34

36

2

(C) 1994 Tune 1000 Corporation ;1976, MPL Com. Ltd.
(C) 1994 Tune 1000 Corporation ;1976, MPL Com. Ltd.

Beatles - let them in
Flute

♩ = 88,000023

2 8

15

18

22

25

29

(C) 1994 Tune 1000 Corporation ;1976, MPL Com. Ltd.
(C) 1994 Tune 1000 Corporation ;1976, MPL Com. Ltd.

Beatles - let them in

Percussion

♩ = 88,000023

2

4/4 2/4 4/4 2/4 4/4

8

12

16

20

24

28

30

31

32

(C) 1994 Tune 1000 Corporation ;1976, MPL Com. Ltd.
(C) 1994 Tune 1000 Corporation ;1976, MPL Com. Ltd.

V.S.

2

Percussion

33

Musical notation for measure 33, featuring a guitar staff with a treble clef and a percussion staff below. The guitar staff contains a sequence of chords: a D major chord (D4, F#4, A4), a D major chord (D4, F#4, A4), a D major chord (D4, F#4, A4), a D major chord (D4, F#4, A4), a D major chord (D4, F#4, A4), a D major chord (D4, F#4, A4), a D major chord (D4, F#4, A4), and a D major chord (D4, F#4, A4). The percussion staff shows a series of 'x' marks indicating muted notes, with a final note marked with a 'y' and a grace note.

34

Musical notation for measure 34, featuring a guitar staff with a treble clef and a percussion staff below. The guitar staff contains a sequence of chords: a D major chord (D4, F#4, A4), a D major chord (D4, F#4, A4), a D major chord (D4, F#4, A4), a D major chord (D4, F#4, A4), a D major chord (D4, F#4, A4), a D major chord (D4, F#4, A4), a D major chord (D4, F#4, A4), and a D major chord (D4, F#4, A4). The percussion staff shows a series of 'x' marks indicating muted notes, with a final note marked with a 'y' and a grace note.

35

Musical notation for measure 35, featuring a guitar staff with a treble clef and a percussion staff below. The guitar staff contains a sequence of chords: a D major chord (D4, F#4, A4), a D major chord (D4, F#4, A4), a D major chord (D4, F#4, A4), a D major chord (D4, F#4, A4), a D major chord (D4, F#4, A4), a D major chord (D4, F#4, A4), a D major chord (D4, F#4, A4), and a D major chord (D4, F#4, A4). The percussion staff shows a series of 'x' marks indicating muted notes, with a final note marked with a 'y' and a grace note.

36

Musical notation for measure 36, featuring a guitar staff with a treble clef and a percussion staff below. The guitar staff contains a sequence of chords: a D major chord (D4, F#4, A4), a D major chord (D4, F#4, A4), a D major chord (D4, F#4, A4), a D major chord (D4, F#4, A4), a D major chord (D4, F#4, A4), a D major chord (D4, F#4, A4), a D major chord (D4, F#4, A4), and a D major chord (D4, F#4, A4). The percussion staff shows a series of 'x' marks indicating muted notes, with a final note marked with a 'y' and a grace note.

37

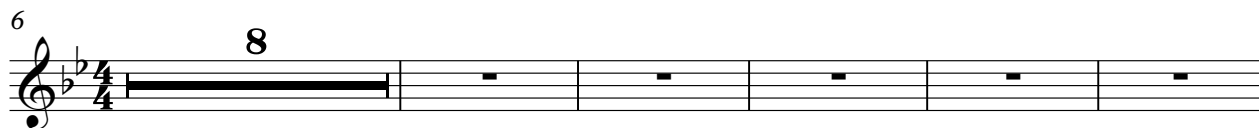
Musical notation for measure 37, featuring a guitar staff with a treble clef and a percussion staff below. The guitar staff contains a sequence of chords: a D major chord (D4, F#4, A4), a D major chord (D4, F#4, A4), a D major chord (D4, F#4, A4), a D major chord (D4, F#4, A4), a D major chord (D4, F#4, A4), a D major chord (D4, F#4, A4), a D major chord (D4, F#4, A4), and a D major chord (D4, F#4, A4). The percussion staff shows a series of 'x' marks indicating muted notes, with a final note marked with a 'y' and a grace note.

Beatles - let them in Vibraphone

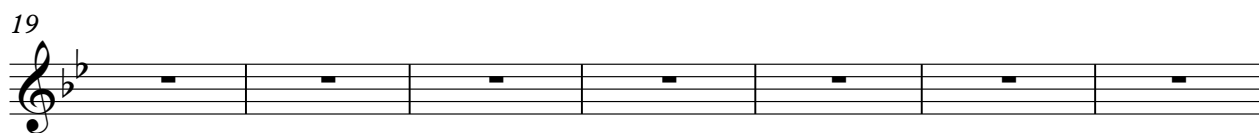
♩ = 88,000023
Back Vocal



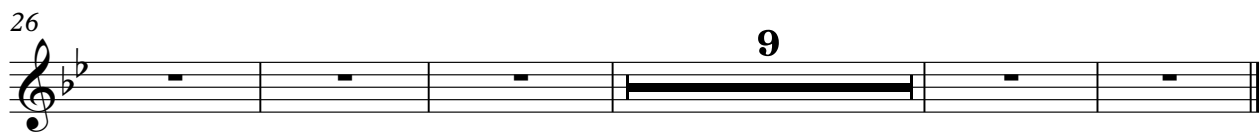
NO RIGHTS ARE CLAIMED FOR REPRODUCTION.



Somebode, somebode. Somebode, somebode. Dufavor, o



peppor alah, ooheeah. Somebode, somebode. Somebode, somebode.



Dufavor, o peppor alah, yeah, Herinn, Sisuzie, Broth

(C) 1994 Tune 1000 Corporation ;1976, MPL Com. Ltd. (C) 1994 Tune 1000 Corporation ;1976, MPL Com. Ltd.

Beatles - let them in
Electric Bass

♩ = 88,000023



9



15



21



27



33



36



(C) 1994 Tune 1000 Corporation ;1976, MPL Com. Ltd.
(C) 1994 Tune 1000 Corporation ;1976, MPL Com. Ltd.

Beatles - let them in
Lead 3 (Calliope)

♩ = 88,000023

2 16

This musical system consists of a single staff in G minor (one flat). It begins with a treble clef and a 4/4 time signature. The first measure contains a whole note chord, with a '2' above it. The next three measures are rests, with time signatures changing to 2/4, 4/4, and 2/4 respectively. The fourth measure is another whole note chord, with a '16' above it. The system concludes with a final measure containing a quarter rest followed by a sixteenth-note triplet (F4, E4, D4) and a quarter note (C4).

23 14

This musical system continues on a single staff in G minor. It starts with a treble clef and a 4/4 time signature. The first measure has a quarter rest followed by a sixteenth-note triplet (F4, E4, D4) and a quarter note (C4). The second measure has a quarter rest followed by a sixteenth-note triplet (F4, E4, D4) and a quarter note (C4). The third measure has a quarter rest followed by a sixteenth-note triplet (F4, E4, D4) and a quarter note (C4). The system ends with a final measure containing a whole note chord, with a '14' above it.

(C) 1994 Tune 1000 Corporation ;1976, MPL Com. Ltd.
(C) 1994 Tune 1000 Corporation ;1976, MPL Com. Ltd.

Beatles - let them in

Solo

♩ = 88,000023

8

12

16

20

24

28

32

36

38

(C) 1994 Tune 1000 Corporation ;1976, MPL Com. Ltd.
(C) 1994 Tune 1000 Corporation ;1976, MPL Com. Ltd.