

Beatles - red sails in the sunset

♩ = 118,000137

DRUMS

GUITAR

GUITAR

BASS

Detailed description: This system contains the first three measures of the piece. The drums enter in the third measure with a steady eighth-note pattern. The guitar parts feature a sustained chord in the third measure, with the second guitar playing a rhythmic pattern of eighth notes. The bass line begins in the third measure with a simple eighth-note accompaniment.



DRUMS

GUITAR

GUITAR

BASS

4

Detailed description: This system contains measures 4 through 7. The drums continue their eighth-note pattern. The guitar parts feature a sustained chord in measure 4, with the second guitar playing a rhythmic pattern of eighth notes. The bass line continues with a simple eighth-note accompaniment.

6

DRUMS

GUITAR

GUITAR

BASS

VOCAL

Detailed description: This block contains the musical notation for measures 6 and 7. The score is arranged in five staves: DRUMS (top), two GUITAR staves, BASS, and VOCAL (bottom). Measure 6 starts with a treble clef and a common time signature. The DRUMS staff shows a complex rhythmic pattern with various note values and rests. The first GUITAR staff features a melodic line with slurs and ties. The second GUITAR staff plays a steady accompaniment of eighth notes. The BASS staff has a melodic line with some rests. The VOCAL staff is mostly empty, with a few notes appearing in measure 7.



8

DRUMS

GUITAR

GUITAR

BASS

VOCAL

Detailed description: This block contains the musical notation for measures 8 and 9. The score is arranged in five staves: DRUMS (top), two GUITAR staves, BASS, and VOCAL (bottom). Measure 8 continues the rhythmic patterns from the previous measures. The DRUMS staff shows a consistent drum pattern. The first GUITAR staff has a melodic line with slurs. The second GUITAR staff continues its accompaniment. The BASS staff has a melodic line with some chromatic movement. The VOCAL staff has a melodic line with a long note in measure 8 and a more active line in measure 9.

10

DRUMS

GUITAR

GUITAR

BASS

VOCAL

RED SAILS IN THE SUNSET



12

DRUMS

GUITAR

GUITAR

BASS

VOCAL

RED SAILS IN THE SUNSET

14

DRUMS

GUITAR

GUITAR

BASS

VOCAL

RED SAILS IN THE SUNSET

Detailed description: This block contains the musical notation for measures 14 and 15. The DRUMS staff shows a complex rhythmic pattern with various note values and rests. The two GUITAR staves feature different textures, with one playing chords and the other playing a more melodic line. The BASS staff provides a steady accompaniment. The VOCAL staff shows a melodic line with a triplet of notes in measure 15. The lyrics 'RED SAILS IN THE SUNSET' are written below the vocal staff, corresponding to the notes.



16

DRUMS

GUITAR

GUITAR

BASS

VOCAL

Detailed description: This block contains the musical notation for measures 16 and 17. The DRUMS staff continues with a similar rhythmic pattern. The two GUITAR staves maintain their respective textures. The BASS staff shows a change in the bass line, including a sharp sign. The VOCAL staff continues the melodic line from the previous measures.

18

DRUMS

GUITAR

GUITAR

BASS

VOCAL

RED SAILS IN THE SUNSET



20

DRUMS

GUITAR

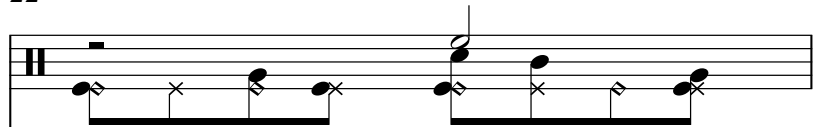
GUITAR

BASS

VOCAL


RED SAILS IN THE SUNSET

DRUMS



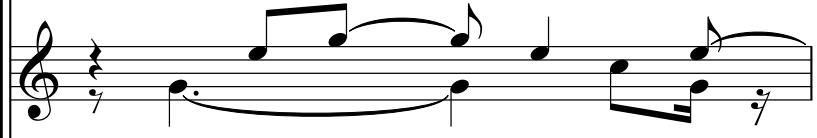
Drum notation for measures 22 and 23. Measure 22 features a snare drum on the second and fourth beats, and a hi-hat on the first and third beats. Measure 23 features a snare drum on the second and fourth beats, and a hi-hat on the first and third beats.

GUITAR



Guitar notation for measures 22 and 23. Measure 22 shows a sustained chord with a fermata. Measure 23 shows a descending melodic line.

GUITAR



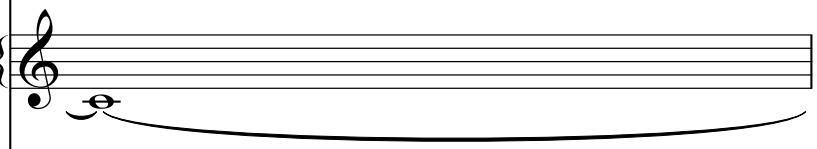
Guitar notation for measures 22 and 23. Measure 22 shows a melodic line with a fermata. Measure 23 shows a descending melodic line.

BASS



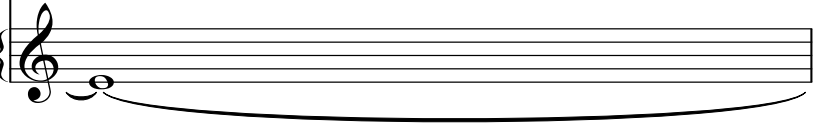
Bass notation for measures 22 and 23. Measure 22 shows a bass line with a fermata. Measure 23 shows a descending bass line.

VOCAL



Vocal notation for measures 22 and 23. Measure 22 shows a vocal line with a fermata. Measure 23 shows a descending vocal line.

RED SAILS IN THE SUNSET



Vocal notation for the phrase "RED SAILS IN THE SUNSET". It shows a vocal line with a fermata.

23

DRUMS

GUITAR

GUITAR

GUITAR

BASS

VOCAL

RED SAILS IN THE SUNSET



24

DRUMS

GUITAR

GUITAR

GUITAR

BASS

25

DRUMS

GUITAR

GUITAR

GUITAR

BASS

Detailed description: This block contains the musical notation for measures 25 and 26. It features five staves: Drums, three Guitars, and Bass. Measure 25 is marked with a '25' above the drum staff. The drum part shows a complex rhythmic pattern with various note values and rests. The first guitar staff has a melodic line with triplets and slurs. The second guitar staff shows a chordal accompaniment with a '3' below it. The third guitar staff has a melodic line with slurs. The bass staff has a simple bass line with slurs.



26

DRUMS

GUITAR

GUITAR

GUITAR

BASS

Detailed description: This block contains the musical notation for measures 26 and 27. It features five staves: Drums, three Guitars, and Bass. Measure 26 is marked with a '26' above the drum staff. The drum part continues with a complex rhythmic pattern. The first guitar staff has a melodic line with triplets and slurs. The second guitar staff shows a chordal accompaniment with a '3' below it. The third guitar staff has a melodic line with slurs. The bass staff has a simple bass line with slurs.

27

DRUMS

GUITAR

GUITAR

GUITAR

BASS

Detailed description: This block contains the musical notation for measures 27 and 28. It features five staves: Drums, three Guitars, and Bass. The Drums staff uses a drum set icon and shows a complex rhythmic pattern with 'x' marks above notes. The top Guitar staff has a treble clef and contains a melodic line with various note values and rests. The middle Guitar staff has a treble clef and shows a sustained chord. The bottom Guitar staff has a treble clef and contains a rhythmic accompaniment with dotted notes. The Bass staff has a bass clef and contains a simple bass line with dotted notes.



28

DRUMS

GUITAR

GUITAR

GUITAR

BASS

Detailed description: This block contains the musical notation for measures 28 and 29. It features five staves: Drums, three Guitars, and Bass. The Drums staff uses a drum set icon and shows a rhythmic pattern with 'x' marks above notes. The top Guitar staff has a treble clef and contains a melodic line with a triplet of eighth notes marked with a '3' above a bracket. The middle Guitar staff has a treble clef and shows a sustained chord. The bottom Guitar staff has a treble clef and contains a rhythmic accompaniment with dotted notes. The Bass staff has a bass clef and contains a bass line with dotted notes and a sharp sign (#) above the final note.

29

DRUMS

GUITAR

GUITAR

GUITAR

BASS

3

||

Detailed description: This block contains the musical notation for measures 29 and 30. It features five staves: DRUMS, three GUITAR staves, and BASS. Measure 29 shows a drum pattern with snare and bass drum hits, a guitar melody with a triplet of eighth notes, and sustained guitar chords. Measure 30 continues the drum pattern and guitar accompaniment. A double bar line symbol is positioned to the left of the staves.

30

DRUMS

GUITAR

GUITAR

GUITAR

BASS

VOCAL

Detailed description: This block contains the musical notation for measures 30 and 31. It features six staves: DRUMS, three GUITAR staves, BASS, and VOCAL. Measure 30 shows a drum pattern with snare and bass drum hits, a guitar melody with a triplet of eighth notes, and sustained guitar chords. Measure 31 continues the drum pattern and guitar accompaniment. The vocal line begins in measure 31 with a melodic phrase.

32

DRUMS

GUITAR

GUITAR

BASS

VOCAL



34

DRUMS

GUITAR

GUITAR

BASS

VOCAL

35

DRUMS

GUITAR

GUITAR

BASS

VOCAL

RED SAILS IN THE SUNSET



37

DRUMS

GUITAR

GUITAR

BASS

VOCAL

RED SAILS IN THE SUNSET

39

DRUMS

GUITAR

GUITAR

BASS

VOCAL

RED SAILS IN THE SUNSET



41

DRUMS

GUITAR

GUITAR

BASS

VOCAL

3

43

DRUMS

GUITAR

GUITAR

BASS

VOCAL

RED SAILS IN THE SUNSET



44

DRUMS

GUITAR

GUITAR

BASS

VOCAL

RED SAILS IN THE SUNSET

46

DRUMS

GUITAR

GUITAR

BASS

VOCAL

RED SAILS IN THE SUNSET

Beatles - red sails in the sunset

DRUMS

♩ = 118,000137
2

6

10

14

17

21

25

28

31

35

V.S.

2

DRUMS

39

Drum notation for measures 39-42. The notation consists of two staves. The top staff uses 'x' marks to indicate hits on the snare drum, with beams connecting them to show eighth-note patterns. The bottom staff uses solid black circles to indicate hits on the bass drum, also with beams connecting them to show eighth-note patterns. The patterns are consistent across all four measures.

43

Drum notation for measures 43-44. The notation consists of two staves. The top staff uses 'x' marks for snare drum hits, and the bottom staff uses solid black circles for bass drum hits. The patterns are consistent across both measures.

45

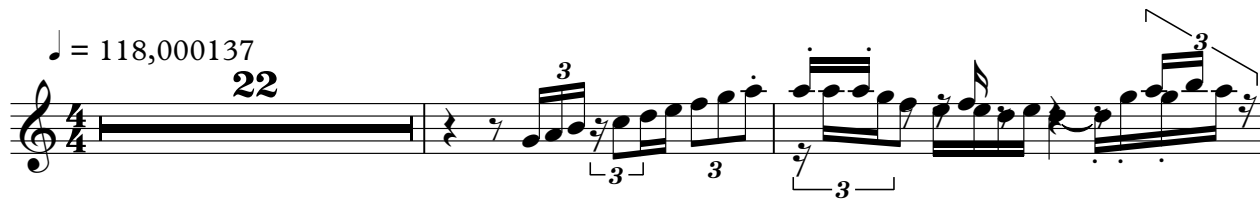
Drum notation for measures 45-48. The notation consists of two staves. The top staff uses 'x' marks for snare drum hits, and the bottom staff uses solid black circles for bass drum hits. The patterns are consistent across all four measures.

GUITAR

Beatles - red sails in the sunset

♩ = 118,000137

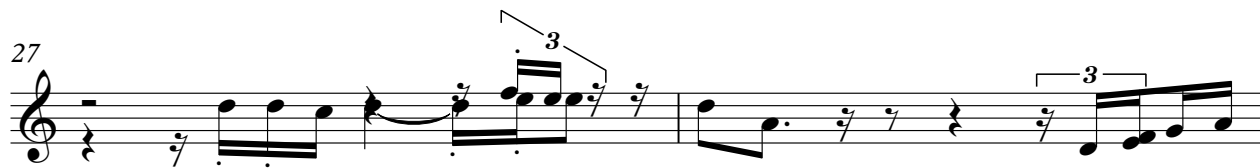
22



25



27



29

18



GUITAR

Beatles - red sails in the sunset

♩ = 118,000137

2

8

15

20

26

34

39

45

GUITAR

Beatles - red sails in the sunset

♩ = 118,000137

2

7

11

15

19

23

27

31

35

39

V.S.

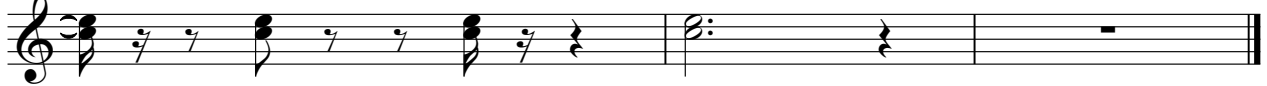
2

GUITAR

43



46



Beatles - red sails in the sunset

BASS

♩ = 118,000137

2

7

12

16

21

26

31

36

41

45

VOCAL

Beatles - red sails in the sunset

♩ = 118,000137

6

12

18

24

7

35

3

3

41

3

44

3

