

Beatles - some other guy

♩ = 134,000061

DRUMS

GUITAR

♩ = 134,000061

GUITAR

T	E				
A	B				
B	A				
		0	0	0	
		3	3	3	

BASS

4

DRUMS

GUITAR

GUITAR

T	0	0					
A	3	3					
B			3	3			
					0	0	0
					3	3	3

BASS

6

DRUMS

GUITAR

GUITAR

BASS

T	0	0	0	1	1	1	0	1	1	1
A	3	3	3	3	3	3	3	3	3	3
B	3	3	3	3	3	3	3	3	3	3

8

DRUMS

GUITAR

GUITAR

BASS

T	1	1	1	1	1	1	1	1	1	1
A	3	3	3	3	3	3	3	3	3	3
B	3	3	3	3	3	3	3	3	3	3

11

DRUMS

GUITAR

GUITAR

BASS

T	0	0	0	0	0	0	0	0	0	0
A	4	3	3	3	3	3	3	3	3	3
B	3	3	3	3	3	3	3	3	3	3

14

DRUMS

GUITAR

GUITAR

BASS

T 0 0 0 1 1 1 0 0 0 0 0 0 0 0 0 0 0 0 0 0

A 3

B 3

17

DRUMS

GUITAR

GUITAR

BASS

T 0

A 3

B 3

20

DRUMS

GUITAR

GUITAR

BASS

T 0 0 0 0 0 1 1 1 0 0 0 0 0 0 0 0 0 0 0 0

A 3

B 3

22

VOCAL

VOCAL

DRUMS

GUITAR

GUITAR

BASS

Detailed description: This system covers measures 22 and 23. The vocal staves show two vocal lines. The drums part features a complex rhythmic pattern with various drum sounds. The guitar part consists of a melodic line with a double bar line and repeat sign over the second measure. The guitar tab below shows fret numbers for strings T, A, and B. The bass part has a steady eighth-note rhythm.

Measure	T	A	B
22	0	3	3
23	0 0	3 3	3 3

24

VOCAL

VOCAL

DRUMS

GUITAR

GUITAR

BASS

Detailed description: This system covers measures 24 and 25. The vocal staves show two vocal lines with a melodic line. The drums part features a complex rhythmic pattern with various drum sounds. The guitar part consists of a melodic line with a double bar line and repeat sign over the second measure. The guitar tab below shows fret numbers for strings T, A, and B. The bass part has a steady eighth-note rhythm.

Measure	T	A	B
24	0	3	3
25	1 1 0	3 3 3	3 3 3

26

VOCAL

VOCAL

DRUMS

GUITAR

GUITAR

BASS

T 0 0 0 0 | 1 1 1 1

A 3 3 3 3 | 3 3

B 3 3 3 3 | 1 1 1 1

28

VOCAL

VOCAL

DRUMS

GUITAR

GUITAR

BASS

T 1 1 | 0 0 0 0

A 3 3 | 3 3

B 1 1 1 | 3 3 3 3

30

VOCAL

VOCAL

DRUMS

GUITAR

GUITAR

T	0	0	0	0
A	4		4	
B	3	3	3	3

BASS

32

VOCAL

VOCAL

DRUMS

GUITAR

GUITAR

T	0	1	1	0	0	0
A		0		4		
B	3	3	3	3	3	3

BASS

34

VOCAL

VOCAL

DRUMS

GUITAR

GUITAR

BASS

The musical score for measures 34-35 features two vocal staves, a drum set, a guitar, and a bass. The guitar part includes a tablature section with the following fret numbers: T (0), A (3), B (3) for the first measure; T (1), A (3), B (3) for the second measure; T (0), A (3), B (3) for the third measure; T (0), A (4), B (3) for the fourth measure; and T (0), A (3), B (3) for the fifth measure. The bass line consists of eighth notes in a steady pattern.

36

VOCAL

VOCAL

DRUMS

GUITAR

GUITAR

BASS

The musical score for measures 36-37 continues with two vocal staves, a drum set, a guitar, and a bass. The guitar part includes a tablature section with the following fret numbers: T (0), A (3), B (3) for the first measure; T (0), A (3), B (3) for the second measure; T (0), A (3), B (3) for the third measure; T (0), A (4), B (3) for the fourth measure; and T (0), A (3), B (3) for the fifth measure. The bass line continues with eighth notes.

38

VOCAL

VOCAL

DRUMS

GUITAR

GUITAR

T	0	0		0	0	0
A	3	3		3	3	3
B	3	3	3	3	3	3

BASS

40

VOCAL

VOCAL

DRUMS

GUITAR

T	0	1	1	0	1	1	0	0	0	0
A	3			3	3	3	3	3	3	3
B	3			3			3	3	3	

BASS

42

VOCAL

VOCAL

DRUMS

GUITAR

GUITAR

BASS

Detailed description: This system contains measures 42 and 43. It features two vocal staves with melodic lines. The drums part shows a consistent pattern of eighth notes with 'x' marks above them, indicating a specific drum sound. The guitar part has a melodic line with some accidentals and a final sustained chord. The bass part plays a steady eighth-note line. The guitar tablature below the staff shows fret numbers for strings T, A, and B.

T	0	0	0	0	0	0
A	3	3	3	3	3	3
B	3	3	3	3	3	3

44

VOCAL

VOCAL

DRUMS

GUITAR

GUITAR

BASS

Detailed description: This system contains measures 44 and 45. The vocal parts continue with their melodic lines. The drums maintain the same eighth-note pattern. The guitar part features a melodic line with a final sustained chord. The bass part continues with its eighth-note line. The guitar tablature shows fret numbers for strings T, A, and B.

T	0	1	1	0	0	0	0	0
A	3	3	3	3	3	3	3	3
B	3	3	3	3	3	3	3	3

46

VOCAL

VOCAL

DRUMS

GUITAR

GUITAR

BASS

48

VOCAL

VOCAL

DRUMS

GUITAR

GUITAR

BASS

50

VOCAL

VOCAL

DRUMS

GUITAR

GUITAR

BASS

Detailed description of measures 50-51: The score consists of six staves. The top two staves are for vocal parts. The third staff is for drums, showing a consistent rhythmic pattern. The fourth staff is for guitar, with a melodic line. The fifth staff shows guitar fretting: Treble (T) has 0, 0, 0, 0; Middle (M) has 3, 3, 3, 3; Bass (B) has 3, 3, 3, 3. The sixth staff is for bass, with a rhythmic line. A triplet of eighth notes is marked in the first vocal staff.

52

VOCAL

VOCAL

DRUMS

GUITAR

GUITAR

BASS

Detailed description of measures 52-53: The score consists of six staves. The top two staves are for vocal parts. The third staff is for drums, showing a consistent rhythmic pattern. The fourth staff is for guitar, with a melodic line. The fifth staff shows guitar fretting: Treble (T) has 0, 0, 0, 1, 1, 0; Middle (M) has 3, 3, 3, 3, 3, 3; Bass (B) has 3, 3, 3, 3, 3, 3. The sixth staff is for bass, with a rhythmic line.

54

VOCAL

VOCAL

DRUMS

GUITAR

GUITAR

BASS

56

VOCAL

VOCAL

DRUMS

GUITAR

GUITAR

BASS

58

VOCAL

VOCAL

DRUMS

GUITAR

BASS

Detailed description: This system covers measures 58 and 59. The top two staves are for vocal parts. The drum staff shows a complex rhythmic pattern with various drum sounds. The guitar part is presented as TAB with fret numbers on strings T, A, and B. The bass staff shows a steady eighth-note line.

Measure	T	A	B
58	0 0 0	3 3 3	3 3 3
59	0 1 0 0 1 0 0	3 3 3 3	3 3 3 3

60

VOCAL

VOCAL

DRUMS

GUITAR

GUITAR

GUITAR

BASS

Detailed description: This system covers measures 60 and 61. The vocal parts continue with melodic lines. The drum staff maintains the rhythmic pattern. The guitar part uses TAB notation. The bass staff features a more active line with some syncopation.

Measure	T	A	B
60	0 1 1 0 0	3 3 3	3 3 3 3 3 3 3
61	1 1 1 1	3 3 3	1 1 1 1 1 1 1

Measure	T	A	B
60	4 4 4 3 1 4		
61	5 5 5		

62

DRUMS

GUITAR

GUITAR

GUITAR

BASS

64

DRUMS

GUITAR

GUITAR

GUITAR

BASS

66

DRUMS

GUITAR

GUITAR

T	1	1				1	1	1	1
A	3	3				3	3	3	3
B	1	1	1			1	1	1	1

GUITAR

T	4	4	4	4	1	4	1	3	1	1	3	0	3	0	3	0
A	5	5	5	5											3	0
B																3

BASS

68

DRUMS

GUITAR

GUITAR

T	1	1				0	0	0	0
A	4	3				3	3	3	3
B		1				3	3	3	3

GUITAR

T	0	3	1	3	0	3	0	3	0	3	0					
A												1	2	0	2	1
B																3

BASS

70

DRUMS

GUITAR

GUITAR

GUITAR

BASS

70

DRUMS

GUITAR

GUITAR

GUITAR

BASS

71

DRUMS

GUITAR

GUITAR

GUITAR

BASS

72

DRUMS

GUITAR

GUITAR

GUITAR

BASS

72

DRUMS

GUITAR

GUITAR

GUITAR

BASS

73

DRUMS

GUITAR

GUITAR

GUITAR

BASS

74

DRUMS

GUITAR

GUITAR

GUITAR

BASS

76

VOCAL

VOCAL

DRUMS

GUITAR

GUITAR

GUITAR

BASS

78

VOCAL

VOCAL

DRUMS

GUITAR

GUITAR

GUITAR

BASS

0 1 1 0 0 0 0

3 3 3 3 3 3 3 3 3

3 3 3 3 3 3 3 3 3

3

80

VOCAL

VOCAL

DRUMS

GUITAR

GUITAR

BASS

0 0 1 1

3 3 3 3 1 3

3 3 3 3 1 1

82

VOCAL

VOCAL

DRUMS

GUITAR

GUITAR

BASS

84

VOCAL

VOCAL

DRUMS

GUITAR

GUITAR

BASS

86

VOCAL

VOCAL

DRUMS

GUITAR

GUITAR

BASS

Detailed description: This block contains the musical notation for measures 86 and 87. It features five staves: two vocal staves (top), a drum staff, a guitar staff, and a bass staff. The guitar staff includes a tablature section with strings T, A, and B. The notation includes various note values, rests, and rhythmic markings.

String	86	87
T	0 0 0 0	0 1 1 0
A	3 3 3 3	3 3 3 3
B	3 3 3 3	3 3 3 3

88

VOCAL

VOCAL

DRUMS

GUITAR

GUITAR

BASS

Detailed description: This block contains the musical notation for measures 88 and 89. It features five staves: two vocal staves (top), a drum staff, a guitar staff, and a bass staff. The guitar staff includes a tablature section with strings T, A, and B. The notation includes various note values, rests, and rhythmic markings.

String	88	89
T	0 0	0 0 0 0
A	3 3	3 3 3 3
B	3 3	3 3 3 3

90

VOCAL

VOCAL

DRUMS

GUITAR

GUITAR

BASS

Detailed description: This system covers measures 90 and 91. The top vocal staff has a long note with a slur. The second vocal staff has a triplet of eighth notes in measure 90, followed by a quarter note, and then eighth notes in measure 91. The drums feature a consistent pattern of eighth notes with accents. The guitar staff shows chords and a triplet of eighth notes in measure 90. The guitar tab below shows fret numbers for strings T, A, and B. The bass staff has a rhythmic pattern of eighth notes.

T									
A	0		0			0		0	
B	3		3	3		3		3	

92

VOCAL

VOCAL

DRUMS

GUITAR

GUITAR

BASS

Detailed description: This system covers measures 92 and 93. The top vocal staff has a long note with a slur. The second vocal staff has eighth notes in measure 92 and quarter notes in measure 93. The drums continue with the eighth-note pattern. The guitar staff has chords and a triplet of eighth notes in measure 92. The guitar tab shows fret numbers for strings T, A, and B. The bass staff has a rhythmic pattern of eighth notes.

T	0		1	1	0		1		1		1
A	0		0		0		0		0		0
B	3		3	3		3		3	3		3

94

VOCAL

VOCAL

DRUMS

GUITAR

GUITAR

BASS

96

DRUMS

GUITAR

GUITAR

BASS

98

DRUMS

GUITAR

GUITAR

T	0	0	0	0	0	0
A	4	3	3	3	3	3
B	3	3	3	3	3	3

BASS

100

DRUMS

GUITAR

GUITAR

T	0	0	0	0	1	1
A	0	3	3	3	3	3
B	3	3	3	3	1	1

BASS

102

DRUMS

GUITAR

GUITAR

T	1	1	1	1
A	0	3	3	3
B	3	3	3	3

BASS

VOCAL

Beatles - some other guy

♩ = 134,000061

22

26

31

37

44

49

53

58

16

77



82



87



92



VOCAL

Beatles - some other guy

♩ = 134,000061

22

26

30

34

38

44

48

52

56

59

16

77



82



87



91



DRUMS

Beatles - some other guy

♩ = 134,000061
2

6

9

12

15

18

21

24

27

30

V.S.

DRUMS

33

36

39

42

45

48

51

54

57

60

DRUMS

63

Drum notation for measures 63-65. The notation consists of two staves: a top staff with 'x' marks representing cymbals and a bottom staff with notes and stems representing the drum kit. The pattern is a consistent 4/4 groove.

66

Drum notation for measures 66-68. The notation consists of two staves: a top staff with 'x' marks representing cymbals and a bottom staff with notes and stems representing the drum kit. The pattern is a consistent 4/4 groove.

69

Drum notation for measures 69-71. The notation consists of two staves: a top staff with 'x' marks representing cymbals and a bottom staff with notes and stems representing the drum kit. The pattern is a consistent 4/4 groove.

72

Drum notation for measures 72-74. The notation consists of two staves: a top staff with 'x' marks representing cymbals and a bottom staff with notes and stems representing the drum kit. The pattern is a consistent 4/4 groove.

75

Drum notation for measures 75-77. The notation consists of two staves: a top staff with 'x' marks representing cymbals and a bottom staff with notes and stems representing the drum kit. The pattern is a consistent 4/4 groove.

78

Drum notation for measures 78-80. The notation consists of two staves: a top staff with 'x' marks representing cymbals and a bottom staff with notes and stems representing the drum kit. The pattern is a consistent 4/4 groove.

81

Drum notation for measures 81-83. The notation consists of two staves: a top staff with 'x' marks representing cymbals and a bottom staff with notes and stems representing the drum kit. The pattern is a consistent 4/4 groove.

84

Drum notation for measures 84-86. The notation consists of two staves: a top staff with 'x' marks representing cymbals and a bottom staff with notes and stems representing the drum kit. The pattern is a consistent 4/4 groove.

87

Drum notation for measures 87-89. The notation consists of two staves: a top staff with 'x' marks representing cymbals and a bottom staff with notes and stems representing the drum kit. The pattern is a consistent 4/4 groove.

90

Drum notation for measures 90-92. The notation consists of two staves: a top staff with 'x' marks representing cymbals and a bottom staff with notes and stems representing the drum kit. The pattern is a consistent 4/4 groove.

V.S.

DRUMS

93

Musical notation for a drum set at measure 93. The notation is on a five-line staff with a double bar line on the left. The top line contains a series of 'x' marks representing cymbals, grouped into six measures. The bottom line contains a series of notes with stems and flags, representing the drum kit, also grouped into six measures. The notes are primarily eighth and sixteenth notes.

96

Musical notation for a drum set at measure 96. The notation is on a five-line staff with a double bar line on the left. The top line contains a series of 'x' marks representing cymbals, grouped into six measures. The bottom line contains a series of notes with stems and flags, representing the drum kit, also grouped into six measures. The notes are primarily eighth and sixteenth notes.

99

Musical notation for a drum set at measure 99. The notation is on a five-line staff with a double bar line on the left. The top line contains a series of 'x' marks representing cymbals, grouped into five measures. The bottom line contains a series of notes with stems and flags, representing the drum kit, also grouped into five measures. The notes are primarily eighth and sixteenth notes.

102

Musical notation for a drum set at measure 102. The notation is on a five-line staff with a double bar line on the left. The top line contains a series of 'x' marks representing cymbals, grouped into two measures. The bottom line contains a series of notes with stems and flags, representing the drum kit, also grouped into two measures. The notes are primarily eighth and sixteenth notes.

GUITAR

Beatles - some other guy

♩ = 134,000061

2

7

12

17

22

27

32

36

2

42

Musical notation for guitar, measures 42-46. The staff shows a sequence of chords and melodic lines. Measure 42 starts with a quarter rest, followed by eighth notes. Measures 43-46 consist of a series of chords and eighth-note patterns.

47

Musical notation for guitar, measures 47-51. The staff shows a sequence of chords and melodic lines. Measures 47-51 consist of a series of chords and eighth-note patterns.

52

Musical notation for guitar, measures 52-55. The staff shows a sequence of chords and melodic lines. Measures 52-55 consist of a series of chords and eighth-note patterns.

56

Musical notation for guitar, measures 56-62. The staff shows a sequence of chords and melodic lines. Measure 56 starts with eighth notes. Measure 57 has a triplet of eighth notes marked with a '3'. Measures 58-62 consist of a series of chords and eighth-note patterns.

63

Musical notation for guitar, measures 63-67. The staff shows a sequence of chords and melodic lines. Measures 63-67 consist of a series of chords and eighth-note patterns.

68

Musical notation for guitar, measures 68-72. The staff shows a sequence of chords and melodic lines. Measures 68-72 consist of a series of chords and eighth-note patterns.

73

Musical notation for guitar, measures 73-76. The staff shows a sequence of chords and melodic lines. Measures 73-76 consist of a series of chords and eighth-note patterns.

77

Musical notation for guitar, measures 77-80. The staff shows a sequence of chords and melodic lines. Measures 77-80 consist of a series of chords and eighth-note patterns.

81

Musical notation for guitar, measures 81-85. The staff shows a sequence of chords and melodic lines. Measures 81-85 consist of a series of chords and eighth-note patterns.

86

Musical notation for guitar, measures 86-90. The staff shows a sequence of chords and melodic lines. Measures 86-90 consist of a series of chords and eighth-note patterns.

91



95



99



102



Beatles - some other guy

GUITAR

♩ = 134,000061

2

E									
B									
G									
D									
A									
E									
A									

6

T	0	0	0	1	1	1			
A	3	3	3	3	3	3			
B									

10

T	1			1					
A	3	3	3	3	3	3			
B									

14

T	0	0	0	1	1	1			
A	3	3	3	3	3	3			
B									

17

T	0	0	0	0	0	0			
A	3	3	3	3	3	3			
B									

21

T	1			1					
A	3	3	3	3	3	3			
B									

24

T	0			1	1				
A	3	3	3	3	3	3			
B									

27

T	1			1	1				
A	3	3	3	3	3	3			
B									

31

T	0	0			1	1			
A	3	3	3	3	3	3			
B									

35

T	0			0	0				
A	3	3	3	3	3	3			
B									

V.S.

T	0	0	0	0	1	1	0	1	1	0	0	0	0	0	0
A	3	3	3	3	3	3	3	3	3	3	3	3	3	3	3
B	3	3	3	3	3	3	3	3	3	3	3	3	3	3	3

42

T	0	0	0	0	0	0	0	1	1	0	0	0	0	0	0
A	3	3	3	3	3	3	3	3	3	3	3	3	3	3	3
B	3	3	3	3	3	3	3	3	3	3	3	3	3	3	3

46

T	1	1	1	1	0	0	0	0	0	0	0	0	0	0	0
A	4	3	3	3	3	3	3	4	3	3	3	3	3	3	3
B	3	3	3	3	3	3	3	3	3	3	3	3	3	3	3

51

T	0	0	0	0	0	0	1	1	0	0	0	0	0	0	0
A	3	3	3	3	3	3	3	3	3	3	3	3	3	3	3
B	3	3	3	3	3	3	3	3	3	3	3	3	3	3	3

55

T	0	0	0	0	0	0	0	0	0	0	0	0	0	0	0
A	3	3	3	3	3	3	3	3	3	3	3	3	3	3	3
B	3	3	3	3	3	3	3	3	3	3	3	3	3	3	3

59

T	0	1	1	1	1	0	0	0	0	1	1	1	1	1	1
A	3	3	3	3	3	3	3	3	3	3	3	3	3	3	3
B	3	3	3	3	3	3	3	3	3	1	1	1	1	1	1

63

T	1	1	1	1	1	1	1	1	1	1	1	1	1	1	1
A	4	3	3	3	3	3	3	3	3	3	3	3	3	3	3
B	3	3	3	3	3	3	3	3	3	3	3	3	3	3	3

67

T	1	1	1	1	1	0	0	0	0	0	0	0	0	0	0
A	3	3	3	3	3	3	3	3	3	3	3	3	3	3	3
B	1	1	1	1	1	3	3	3	3	3	3	3	3	3	3

71

T	0	1	1	0	0	0	0	0	0	0	0	0	0	0	0
A	3	3	3	3	3	3	3	3	3	3	3	3	3	3	3
B	3	3	3	3	3	3	3	3	3	3	3	3	3	3	3

75

T	0	0	0	0	0	0	0	1	1	0	0	0	1	1	0
A	3	3	3	3	3	3	3	3	3	3	3	3	3	3	3
B	3	3	3	3	3	3	3	3	3	3	3	3	3	3	3

T	0	0	0	0	1	1	1	1	0	1	1
A	3	3	3	3	3	3	3	3	3	3	3
B	3	3	3	3	1	1	1	1	3	3	3

84

T	0	0	0	0	0	0	0	0	0	1	1
A	3	3	3	3	3	3	3	3	3	3	3
B	3	3	3	3	3	3	3	3	3	3	3

88

T	0	0	0	0	0	0	0	0	0	0
A	3	3	3	3	3	3	3	3	3	3
B	3	3	3	3	3	3	3	3	3	3

92

T	0	1	1	0	0	1	1	1	1	0	0	0
A	3	3	3	3	3	3	3	3	3	3	3	3
B	3	3	3	3	3	3	3	3	3	3	3	3

95

T	0	0	0	0	1	1	0	0	0	0
A	3	3	3	3	3	3	3	3	3	3
B	3	3	3	3	1	1	1	1	3	3

99

T	0	0	0	0	0	0	0	0	0	0
A	3	3	3	3	3	3	3	3	3	3
B	3	3	3	3	3	3	3	3	3	3

101

T	1	1	1	0	1	1	1	1	0	0
A	3	3	3	3	3	3	3	3	3	3
B	1	1	1	3	3	3	3	3	3	3

Beatles - some other guy

GUITAR

♩ = 134,000061

60

E			
B			
G		4 4	4 3 1 4
D		5 5	5
A			
E			
A			3

63

T	3	1	3 0 3 0	0	0	1 1 1	4 1 4 4 1 4	1	1 1	3	1	4 4 4 4 1
A				4	0							
B												

66

T	4 4	4	4	1 4 1	1 1	3 0	3 0	3 0	3	0	0 3	1	3 0 3 0	3	0
A															
B															

69

T																
A		1 2	0	2	1	3	3	2 0	1 0	1	1 0	1	0 3	1	3	1 1 1
B																

72

T	1	1	3 0 3 0 0	0	0 0 0	0	0 3	0 0	3 0 0	3	0 3	1	0 0	3
A														
B														

75

T	3	0	3	0 0	0 1	0	1 0	1	0	1	1	1	1	3
A														
B														

77

26

T														
A														
B	3	1	1	3	6	3								

BASS

Beatles - some other guy

♩ = 134,000061



V.S.

37



41



44



47



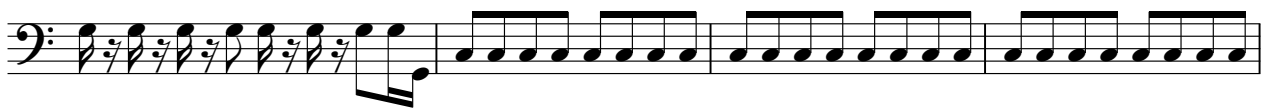
50



53



56



60



63



66



69



72



75



78



81



84



87



90



93



95



V.S.

4

BASS

98



101

