

Beatles - Tell Me What You See 2

♩ = 132,999954

This system of music includes four staves: drums (d), guitar 1 (g1), guitar 2 (g2), and bass (b). The time signature is 4/4. The key signature has one sharp (F#). The drum part features a steady eighth-note pattern. The guitar 1 part has a melodic line with slurs. The guitar 2 part plays a complex chordal accompaniment. The bass part provides a simple harmonic foundation.

5

This system of music includes five staves: drums (d), vocal (v), guitar 1 (g1), guitar 2 (g2), and bass (b). The time signature is 4/4. The key signature has one sharp (F#). The drum part continues with the eighth-note pattern. The vocal part has a melodic line with lyrics. The guitar 1 part has a melodic line with slurs. The guitar 2 part plays a complex chordal accompaniment. The bass part provides a simple harmonic foundation.

8

d

v

g1

g2

b

11

d

v

g2

b

14

This system of music contains measures 14, 15, and 16. It features four staves: a drum set staff (d) with a double bar line and a series of 'x' marks above it; a vocal staff (v) with a treble clef and a key signature of one sharp; a guitar staff (g2) with a treble clef and a key signature of one sharp, showing dense chordal textures; and a bass staff (b) with a bass clef and a key signature of one sharp, showing a simple bass line.

17

This system of music contains measures 17, 18, and 19. It features four staves: a drum set staff (d) with a double bar line and a series of 'x' marks above it; a vocal staff (v) with a treble clef and a key signature of one sharp; a guitar staff (g2) with a treble clef and a key signature of one sharp, showing dense chordal textures; and a bass staff (b) with a bass clef and a key signature of one sharp, showing a simple bass line.

20

d

v

g1

g2

b

23

d

v

g2

b

26

This system contains measures 26, 27, and 28. The drum part (d) features a consistent pattern of eighth notes with 'x' marks above them, indicating a specific drum sound. The vocal part (v) has a melody starting on a half note G4, followed by quarter notes A4, B4, and C5, with a quarter rest in measure 27. The guitar part (g2) consists of a dense, rhythmic accompaniment of eighth-note chords. The bass part (b) provides a simple bass line with quarter notes G2, A2, B2, and C3.

29

This system contains measures 29, 30, and 31. The drum part (d) continues with the same eighth-note pattern. The vocal part (v) continues the melody with quarter notes D5, E5, and F5, followed by a quarter rest in measure 30. The guitar part (g2) maintains the dense eighth-note chordal accompaniment. The bass part (b) continues with quarter notes D2, E2, and F2.

32

This system contains measures 32, 33, and 34. The drum part (d) continues with the eighth-note pattern. The vocal part (v) has a quarter rest in measure 32, then continues the melody with quarter notes G5, A5, and B5. The guitar part (g2) continues with the dense eighth-note accompaniment. The bass part (b) continues with quarter notes C3, D3, and E3.

35

d

v

g2

b

38

d

v

g2

b

ep

41

Measures 41-42 of a musical score. The score is written for three parts: d (drum), b (bass), and ep (electric piano). The key signature has one sharp (F#). The drum part (d) features a rhythmic pattern of eighth notes with triplets. The bass part (b) has a simple bass line. The electric piano part (ep) features a melodic line with triplets and chords.

43

Measures 43-45 of a musical score. The score is written for five parts: d (drum), v (voice), g1 (guitar 1), g2 (guitar 2), b (bass), and ep (electric piano). The key signature has one sharp (F#). The drum part (d) features a rhythmic pattern of eighth notes with 'x' marks above them. The voice part (v) has a vocal line. The guitar 1 part (g1) has a melodic line. The guitar 2 part (g2) has a complex melodic line with many notes. The bass part (b) has a simple bass line. The electric piano part (ep) has a melodic line with triplets.

46

This musical system covers measures 46, 47, and 48. It features five staves: a drum set (d), a vocal line (v), two guitar parts (g1 and g2), and a bass line (b). The key signature has one sharp (F#). The drum part consists of a steady eighth-note pattern. The vocal line has a melodic line with some rests. The first guitar part (g1) is mostly silent with some final chords. The second guitar part (g2) plays a complex, rhythmic chordal pattern. The bass line provides a simple harmonic accompaniment.

49

This musical system covers measures 49, 50, and 51. It features five staves: a drum set (d), a vocal line (v), two guitar parts (g1 and g2), and a bass line (b). The key signature has one sharp (F#). The drum part continues with the same eighth-note pattern. The vocal line has a melodic line with some rests. The first guitar part (g1) has some initial chords but is mostly silent. The second guitar part (g2) plays a complex, rhythmic chordal pattern. The bass line provides a simple harmonic accompaniment.

52

This system contains measures 52, 53, and 54. The drum part (d) features a consistent pattern of eighth notes with 'x' marks above them, indicating a specific drum sound. The vocal part (v) has a melodic line with a key signature of one sharp (F#). The guitar part (g2) consists of a dense, rhythmic accompaniment of chords. The bass part (b) provides a steady bass line.

55

This system contains measures 55, 56, and 57. The drum part (d) continues with the same eighth-note pattern. The vocal part (v) has a melodic line with a key signature of one sharp (F#). The guitar part (g2) consists of a dense, rhythmic accompaniment of chords. The bass part (b) provides a steady bass line.

58

This system contains measures 58, 59, and 60. The drum part (d) continues with the same eighth-note pattern. The vocal part (v) has a melodic line with a key signature of one sharp (F#). The guitar part (g2) consists of a dense, rhythmic accompaniment of chords. The bass part (b) provides a steady bass line.

61

Drum (d) part: A series of rhythmic patterns consisting of eighth and sixteenth notes, with some rests. A circled 'X' symbol is present at the end of the first measure.

Vibraphone (v) part: Chordal accompaniment with sustained notes and some melodic movement.

Guitar 2 (g2) part: Chordal accompaniment with sustained notes and some melodic movement.

Bass (b) part: Rhythmic accompaniment with eighth and sixteenth notes, including some rests.

Electric Piano (ep) part: Chordal accompaniment with sustained notes and some melodic movement, including a triplet in the final measure.

65

Drum (d) part: Rhythmic accompaniment with eighth and sixteenth notes, including triplets.

Bass (b) part: Rhythmic accompaniment with eighth and sixteenth notes, including some rests.

Electric Piano (ep) part: Chordal accompaniment with sustained notes and some melodic movement, including triplets.

67

d

v

g1

g2

b

ep

70

d

v

g1

g2

b

ep

73

d

v

g1

g2

b

76

d

v

g2

b

79

d

v

g2

b

82

d

v

g2

b

85

This system of music covers measures 85 and 86. It features four staves: a drum set (d), a vocal line (v), a guitar 2 (g2), and a bass (b). The drum set part shows a consistent rhythmic pattern of eighth notes. The vocal line consists of quarter notes. The guitar 2 part has a complex texture with many notes, some beamed together. The bass part has a simple line with quarter notes and rests.

87

This system of music covers measures 87 through 90. It features five staves: a drum set (d), a vocal line (v), a guitar 2 (g2), a bass (b), and an electric piano (ep). The drum set part is mostly silent with some rests. The vocal line has a few notes. The guitar 2 part has a complex texture with many notes, some beamed together. The bass part has a simple line with quarter notes and rests. The electric piano part has a few notes, including a triplet in measure 89.

Beatles - Tell Me What You See 2

d

♩ = 132,999954

2

6

10

14

18

22

26

30

34

37

41

44

48

52

56

60

65

68

72

76

80 d 3

Musical notation for guitar, measures 80-83. The top staff shows a sequence of eighth-note chords with 'x' marks indicating muted strings. The bottom staff shows a bass line with eighth notes and quarter notes. A 'd' (down-bow) marking is above the first measure, and a '3' (triple) marking is above the last measure.

84 3

Musical notation for guitar, measures 84-85. The top staff shows a sequence of eighth-note chords with 'x' marks indicating muted strings. The bottom staff shows a bass line with eighth notes and quarter notes. A '3' (triple) marking is above the last measure.

Beatles - Tell Me What You See 2

v

♩ = 132,999954

4

9

14

19

24

29

34

40

49

53

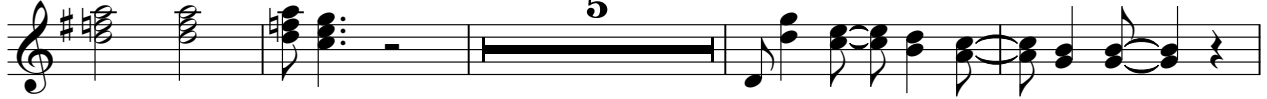
2

v

57



62



71



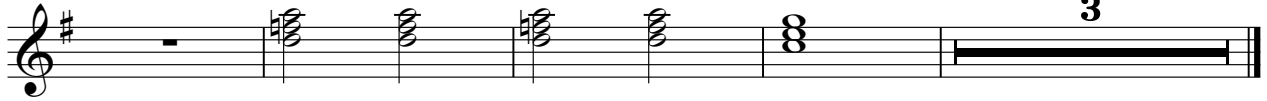
76



81



84



Beatles - Tell Me What You See 2

g1

♩ = 132,999954

2

8

10

22

21

3

50

17

3

72

17

Beatles - Tell Me What You See 2

g2

♩ = 132,999954

2

6

10

13

17

21

25

28

32

36

2

43

47

50

53

57

61

68

72

75

79

83

g2

3

86

2

Beatles - Tell Me What You See 2

b

♩ = 132,999954

2



8



14



20



26



32



37



43



49



55



V.S.

2

b

60



65



71



77



83



86



Beatles - Tell Me What You See 2

ep

♩ = 132,999954

38

42

18

18

63

67

18

18

87