

5

VOCAL

DRUMS

GUITAR

BASS

This system contains measures 5 and 6. The vocal line in measure 5 features a melodic phrase starting with a quarter rest, followed by eighth and quarter notes. The drums play a steady pattern of eighth notes. The guitar has a sustained chord in measure 5 and a melodic line in measure 6. The bass line consists of a simple eighth-note pattern.

6

VOCAL

DRUMS

GUITAR

BASS

This system contains measures 7 and 8. The vocal line continues with a melodic phrase. The drums play a more complex pattern with some syncopation. The guitar has a melodic line in measure 7 and a sustained chord in measure 8. The bass line continues with a simple eighth-note pattern.

7

VOCAL

DRUMS

GUITAR

BASS

This system contains measures 9 and 10. The vocal line has a melodic phrase in measure 9 and a sustained note in measure 10. The drums feature a triplet of eighth notes in measure 9. The guitar has a melodic line in measure 9 and a sustained chord in measure 10. The bass line continues with a simple eighth-note pattern.

8

VOCAL

DRUMS

GUITAR

BASS

This system contains measures 8 and 9. The vocal line in measure 8 features a half note followed by a quarter note. The drums play a triplet of eighth notes in measure 8 and a quarter note in measure 9. The guitar part in measure 8 has a half note, while in measure 9 it plays a complex rhythmic pattern with eighth notes and a triplet. The bass line in measure 8 has a half note, and in measure 9 it plays a quarter note followed by a half note.

9

VOCAL

DRUMS

GUITAR

BASS

This system contains measures 9 and 10. The vocal line in measure 9 has a quarter note followed by a half note. The drums play a quarter note in measure 9 and a half note in measure 10. The guitar part in measure 9 has a half note, and in measure 10 it plays a complex rhythmic pattern with eighth notes and a triplet. The bass line in measure 9 has a quarter note followed by a half note, and in measure 10 it plays a quarter note followed by a half note.

10

VOCAL

DRUMS

GUITAR

BASS

This system contains measures 10 and 11. The vocal line in measure 10 has a quarter note followed by a half note. The drums play a quarter note in measure 10 and a half note in measure 11. The guitar part in measure 10 has a half note, and in measure 11 it plays a complex rhythmic pattern with eighth notes and a triplet. The bass line in measure 10 has a quarter note followed by a half note, and in measure 11 it plays a quarter note followed by a half note.

11

VOCAL

DRUMS

GUITAR

BASS

12

VOCAL

DRUMS

GUITAR

BASS

14

VOCAL

DRUMS

GUITAR

BASS

16

VOCAL

DRUMS

GUITAR

BASS

17

VOCAL

DRUMS

GUITAR

GUITAR

BASS

THERE ONCE WAS A BEAUTIFUL

18

VOCAL

DRUMS

GUITAR

GUITAR

BASS

THERE ONCE WAS A BEAUTIFUL

19

VOCAL

DRUMS

GUITAR

GUITAR

BASS

THERE ONCE WAS A BEAUTIFUL

20

VOCAL

DRUMS

GUITAR

GUITAR

BASS

THERE ONCE WAS A BEAUTIFUL

21

VOCAL

DRUMS

GUITAR

GUITAR

BASS

THERE ONCE WAS A BEAUTIFUL

22

VOCAL

DRUMS

GUITAR

GUITAR

BASS

THERE ONCE WAS A BEAUTIFUL

23

VOCAL

DRUMS

GUITAR

GUITAR

BASS

THERE ONCE WAS A BEAUTIFUL

24

VOCAL

DRUMS

GUITAR

GUITAR

BASS

THERE ONCE WAS A BEAUTIFUL

25

VOCAL

DRUMS

GUITAR

GUITAR

BASS

THERE ONCE WAS A BEAUTIFUL

26

VOCAL

DRUMS

GUITAR

GUITAR

BASS

THERE ONCE WAS A BEAUTIFUL

27

VOCAL

DRUMS

GUITAR

GUITAR

BASS

THERE ONCE WAS A BEAUTIFUL

28

VOCAL

DRUMS

GUITAR

GUITAR

BASS

THERE ONCE WAS A BEAUTIFUL

29

VOCAL

DRUMS

GUITAR

GUITAR

BASS

THERE ONCE WAS A BEAUTIFUL

30

DRUMS

GUITAR

GUITAR

BASS

THERE ONCE WAS A BEAUTIFUL

Detailed description: This block contains the musical notation for measures 30 and 31. It features five staves: DRUMS (top), two GUITAR parts (middle), BASS (bottom), and a vocal line (bottom-most). The DRUMS staff shows a complex rhythmic pattern with various note values and rests. The two GUITAR parts have different melodic and harmonic lines, with some triplets and slurs. The BASS part provides a steady accompaniment. The vocal line begins with the lyrics 'THERE ONCE WAS A BEAUTIFUL' and has a long note that spans across the end of measure 30 and the beginning of measure 31.

31

DRUMS

GUITAR

GUITAR

BASS

THERE ONCE WAS A BEAUTIFUL

Detailed description: This block contains the musical notation for measures 31 and 32. It features five staves: DRUMS (top), two GUITAR parts (middle), BASS (bottom), and a vocal line (bottom-most). The DRUMS staff continues the rhythmic pattern from the previous block. The two GUITAR parts have more complex melodic lines, including triplets and slurs. The BASS part continues its accompaniment. The vocal line continues with the lyrics 'THERE ONCE WAS A BEAUTIFUL' and has a long note that spans across the end of measure 31 and the beginning of measure 32.

32

DRUMS

GUITAR

GUITAR

BASS

THERE ONCE WAS A BEAUTIFUL

33

DRUMS

GUITAR

GUITAR

BASS

THERE ONCE WAS A BEAUTIFUL

34

DRUMS

GUITAR

GUITAR

BASS

THERE ONCE WAS A BEAUTIFUL

35

DRUMS

GUITAR

GUITAR

BASS

THERE ONCE WAS A BEAUTIFUL

36

DRUMS

GUITAR

GUITAR

BASS

THERE ONCE WAS A BEAUTIFUL

38

DRUMS

GUITAR

GUITAR

BASS

THERE ONCE WAS A BEAUTIFUL

40

DRUMS

GUITAR

GUITAR

BASS

THERE ONCE WAS A BEAUTIFUL

42

DRUMS

GUITAR

GUITAR

BASS

THERE ONCE WAS A BEAUTIFUL

43

DRUMS

GUITAR

GUITAR

BASS

THERE ONCE WAS A BEAUTIFUL

44

DRUMS

GUITAR

GUITAR

BASS

THERE ONCE WAS A BEAUTIFUL

VOCAL

Beatles - there once was a beautiful girl

♩ = 140,000137

4

9

14

19

24

27

15

Beatles - there once was a beautiful girl

DRUMS

♩ = 140,000137

2

6

9

12

16

19

22

25

28

31

V.S.

2

DRUMS

34

Musical notation for drums, measures 34-36. The notation is on a single staff with a double bar line at the beginning. It features various rhythmic patterns including eighth notes, quarter notes, and quarter rests. There are two triplet markings (the number 3) under groups of notes. The notation includes 'x' marks below the staff, likely indicating specific drum sounds or techniques.

37

Musical notation for drums, measures 37-40. The notation is on a single staff with a double bar line at the beginning. It features various rhythmic patterns including eighth notes, quarter notes, and quarter rests. There is a triplet marking (the number 3) at the start of the first measure. The notation includes 'x' marks below the staff, likely indicating specific drum sounds or techniques.

41

Musical notation for drums, measures 41-43. The notation is on a single staff with a double bar line at the beginning. It features various rhythmic patterns including eighth notes, quarter notes, and quarter rests. There is a triplet marking (the number 3) under a group of notes in the second measure. The notation includes 'x' marks below the staff, likely indicating specific drum sounds or techniques.

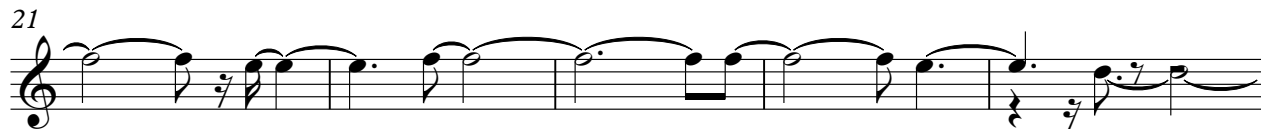
GUITAR

Beatles - there once was a beautiful girl

♩ = 140,000137
16



21



26



31



36



41



GUITAR

Beatles - there once was a beautiful girl

♩ = 140,000137

4

7

9

12

17

20

24

27

30

V.S.

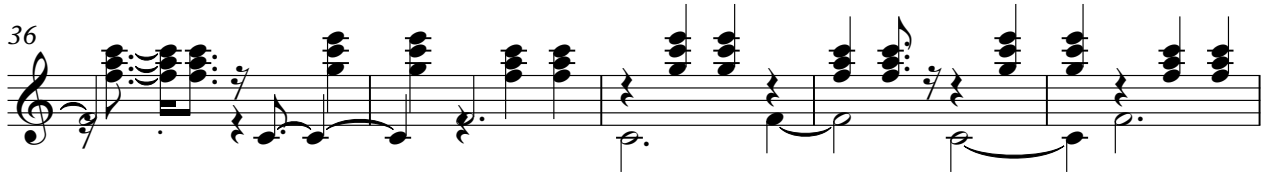
2

GUITAR

33



36



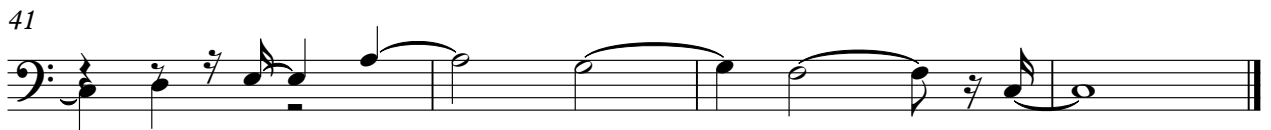
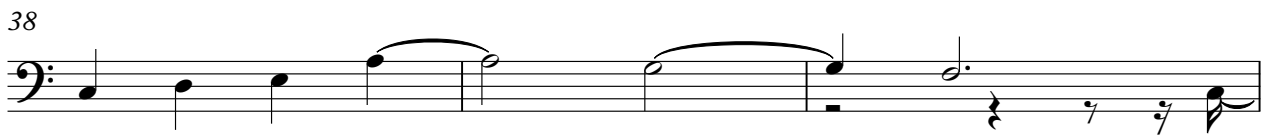
41



Beatles - there once was a beautiful girl

BASS

♩ = 140,000137



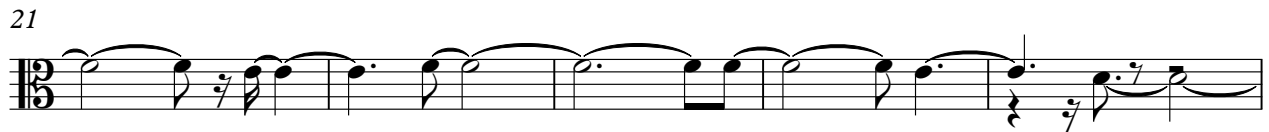
Beatles - there once was a beautiful girl
THERE ONCE WAS A BEAUTIFUL

♩ = 140,000137

16



21



26



31



36



41

