

Better Than Ezra - Good

♩ = 112,000061

Electric Guitar (Clean)

Distorted Guitar

BASS1

Measures 1-3: Electric Guitar (Clean) has a whole rest in measures 1-2 and a chord in measure 3. Distorted Guitar has a guitar tab with fret numbers: E (1 1 1 1), B (1 1 1 1), G (3 3 3), D (3 3 3), A (1 1 3), B (1 3). BASS1 has a bass line with slurs and accents.



Electric Guitar (Clean)

Distorted Guitar

BASS1

4

Measures 4-5: Electric Guitar (Clean) has a whole rest in measure 4 and a chord in measure 5. Distorted Guitar has a guitar tab with fret numbers: E (1 1 1 1), B (1 1 1 1), G (3 3 3), D (3 3 3), A (1 3), B (1 3). BASS1 has a bass line with slurs and accents.



BASS1

6

Measure 6: BASS1 has a bass line with slurs and accents.



Electric Guitar (Clean)

Distorted Guitar

BASS1

8

Measures 7-8: Electric Guitar (Clean) has a whole rest in measure 7 and a chord in measure 8. Distorted Guitar has a guitar tab with fret numbers: E (4 4 3 3), B (3 3 3 3), G (1), D (6 6), A (6 6), B (6 6). BASS1 has a bass line with slurs and accents.



Vocals

BASS1

10

Measures 9-10: Vocals has a melody line. BASS1 has a bass line with slurs and accents.

12

Vocals

Electric Guitar (Clean)

Distorted Guitar

BASS1

T
A
B

4 4 3
3 3 3
6 6 6
6 6 6



14

Vocals

BASS1



16

Vocals

Electric Guitar (Clean)

Distorted Guitar

BASS1

T
A
B

1 1 1
1 1 1 1
0 0 0 4 4 3
3 3 3 0 0 0 3 3 3
1 1 3 3 6
1 1 3 6 6 6 6

18

Vocals

Electric Guitar (Clean)

Distorted Guitar

BASS1



20

Vocals

BASS1



22

Vocals

Electric Guitar (Clean)

Distorted Guitar

BASS1



24

Vocals

BASS1

26

Vocals

Electric Guitar (Clean)

Distorted Guitar

BASS1

T 3 3 3 1 1 1 1 | 0 0 0 4 4 3
 A 3 3 3 3 3 | 0 0 0 3 3 3
 B 1 1 3 1 | 3 6 6 6 6



28

Vocals

Electric Guitar (Clean)

Distorted Guitar

BASS1

T 3 3 3 1 1 1 1 | 0 0 0 4 4 3
 A 3 3 3 3 3 | 0 0 0 3 3 3
 B 1 1 3 1 | 3 6 6 6 6



30

Vocals

Electric Guitar (Clean)

Distorted Guitar

BASS1

T 3 3 3 1 1 1 1 | 0 0 0 4 4 3
 A 3 3 3 3 3 | 0 0 0 3 3 3
 B 1 1 3 1 | 3 6 6 6 6

32

Vocals

Electric Guitar (Clean)

Distorted Guitar

BASS1

T
A
B

3 3 3 1 1 1 1 0 0 0 4 4 3
3 3 3 3 0 0 0 3 3 3
1 1 1 3 3 6 6 6 6



34

Vocals

Distorted Guitar

BASS1

T
A
B

1 1 3 3 1 1 3 3 0 0 1 1
1 1 3 3 3 3 1 1



36

Vocals

Distorted Guitar

BASS1

T
A
B

1 1 3 3 1 1 3 3 0 0 1 1
1 1 3 3 3 3 1 1



38

Vocals

Distorted Guitar

BASS1

T
A
B

3 3 3 4 4 3 3 3 3 3 3 4 3 3
3 3 3 3 3 3 3 3 3 3 3 3 3 3

40

Vocals

Distorted Guitar

BASS1



42

Vocals

Distorted Guitar

BASS1



44

Vocals

Distorted Guitar

BASS1



46

Vocals

Electric Guitar (Clean)

Distorted Guitar

BASS1

48

Vocals

Electric Guitar (Clean)

Distorted Guitar

BASS1

Tablature for Distorted Guitar (Measures 48-49):

Measure	T	A	B
48		3 3 3	3 3 3
49	1 2 3	0 0 3	1 1 1 3 5 6



50

Vocals

Electric Guitar (Clean)

Distorted Guitar

BASS1

Tablature for Distorted Guitar (Measures 50-51):

Measure	T	A	B
50		3 3 3	3 3 3
51	1 2 3	0 0 3	1 1 3 5 6



52

Vocals

Electric Guitar (Clean)

Distorted Guitar

BASS1

Tablature for Distorted Guitar (Measures 52-53):

Measure	T	A	B
52		3 3 3	3 3 3
53	1 2 3	0 0 3	1 1 3 5 6

54

Vocals

Electric Guitar (Clean)

Distorted Guitar

BASS1

Tablature for Distorted Guitar (Measures 54-55):

T	3	3	3	1	1	1	1	0	0	0	4	4	3
A	3	3	3	3	3	3	3	0	0	0	3	3	3
B	1	1	1	3	3	3	3	0	0	0	6	6	6



56

Vocals

Electric Guitar (Clean)

Distorted Guitar

BASS1

Tablature for Distorted Guitar (Measures 56-57):

T	3	3	3	1	1	1	1	0	0	0	4	4	3
A	3	3	3	3	3	3	3	0	0	0	3	3	3
B	1	1	1	3	3	3	3	0	0	0	6	6	6



58

Vocals

Electric Guitar (Clean)

Distorted Guitar

BASS1

Tablature for Distorted Guitar (Measures 58-59):

T	3	3	3	1	1	1	1	0	0	0	4	4	3
A	3	3	3	3	3	3	3	0	0	0	3	3	3
B	1	1	1	3	3	3	3	0	0	0	6	6	6

60

Vocals

Vocals

Electric Guitar (Clean)

Distorted Guitar

BASS1



62

Vocals

Electric Guitar (Clean)

Distorted Guitar

bass

64

Vocals

Solo

Electric Guitar (Clean)

Distorted Guitar

bass

T 1 1 1 3 3 3 3
A 0 0 0 5 3 3 3
B 3 3 3 0 0 0 0

2 2 2 1 1 0
2 2 2 1 1 1
0 3 3

1 1 0
1 1 1



66

Solo

Electric Guitar (Clean)

Distorted Guitar

bass

T 1 1 1 3 3 3 3
A 0 0 0 0 0 0 0
B 3 3 3 3 3 3 3

2 2 2 1 1 0
2 2 2 1 1 1
0 3 3

1 1 0
1 1 1



68

Solo

Electric Guitar (Clean)

Distorted Guitar

bass

T 1 1 1 1 3 3 3 3
A 0 0 0 0 0 0 0
B 3 3 3 3 3 3 3

2 2 2 1 1 0
2 2 2 1 1 1
0 0 3 3 3

1 1 0
1 1 1

70

Vocals

Electric Guitar (Clean)

Distorted Guitar

BASS



72

Vocals

Electric Guitar (Clean)

Distorted Guitar

BASS



74

Vocals

Electric Guitar (Clean)

Distorted Guitar

BASS

76

Vocals

Electric Guitar (Clean)

Distorted Guitar

BASS



78

Vocals

Distorted Guitar

BASS



81

Vocals

Electric Guitar (Clean)

Distorted Guitar

BASS



83

Vocals

Electric Guitar (Clean)

Distorted Guitar

BASS

Better Than Ezra - Good

Vocals

♩ = 112,000061

9

13

19

23

27

31

35

39

43

47

V.S.

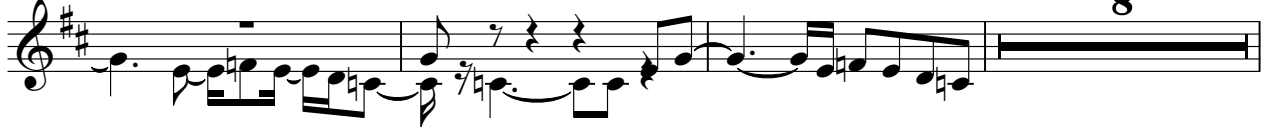
51



55



59



70



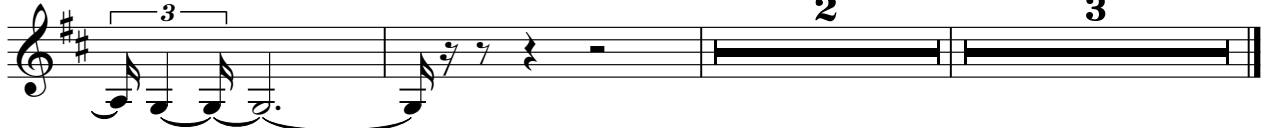
74



79



84



Vocals

Better Than Ezra - Good

♩ = 112,000061

60

63

26

Better Than Ezra - Good

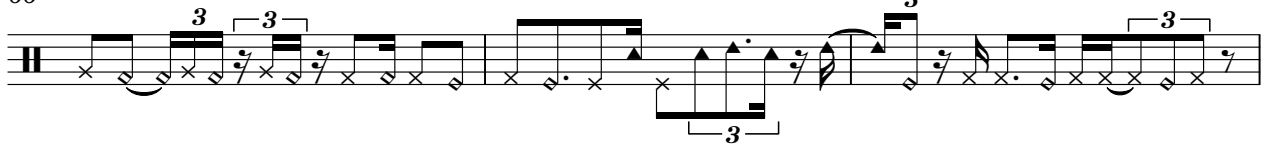
Solo

♩ = 112,000061

63



66



69

18



88



Electric Guitar (Clean)

Better Than Ezra - Good

♩ = 112,000061

2 3

10 3 3

19 3 3

29 13

47

53

59

65

71

75 3

2

Electric Guitar (Clean)

81



85



Better Than Ezra - Good

Distorted Guitar

♩ = 112,000061

E		1	1	1	1					1	1	1
B		1	1	1	1					1	1	1
G	3	3	3			0	0	0	4	4	3	
D	3	3	3	3		0	0	0	3	3	3	3
A	1	1		3		0	0	0		1		3
E				1		3			6	6		3
A	1	1				3			6	6	6	6

5

T	0	0	0	4	4	3	3			4	4	3	3			4	4	3
A	0	0	0	3	3	3	3			3	3	3	3			3	3	3
B	3			6		1	3			6	6	6	3			6	6	6
				6	6	6	3			6	6	6	3			6	6	6

14

T	2			1	1	1				1	1	1
A	2			3	3	3	1	1	1	1	1	1
B	2			1	1	1	0	0	0	4	4	3
	2			3	3	3	0	0	0	3	3	3
	2			1	1	1	0	0	0	6	1	3
	2			3		3	3	3	3	3	3	3
	2			1		1	3		1	3	3	3
	2			1		1	3		6	6	6	6

19

T	0	0	0	4	4	3	3			4	4	3	2		
A	0	0	0	3	3	3	3			3	3	3	2		
B	3			6		1	3			6	6	6	2		
				6	6	6	3			6	6	6	2		

26

T	3	3	3	1	1	1				1	1	1
A	3	3	3	1	1	1	0	0	0	4	4	3
B	1	1		3		3	0	0	0	3	3	3
	1	1		3		3	0	0	0	6	1	3
	1	1		1		1	3		6	6	6	6

29

T	0	0	0	4	4	3				1	1	1
A	0	0	0	3	3	3	3	3	3	1	1	1
B	3			6		1	3	3	3	3	3	3
				6	6	6	3	3	3	3	3	3
				6	6	6	1		1	3		3
				1		1	3		6	6	6	6

32

T	3	3	3	1	1	1				4	4	3	4		
A	3	3	3	1	1	1	0	0	0	3	3	3	4		
B	1	1		3		3	0	0	0	6	1	3	4		
	1	1		3		3	0	0	0	6	6	6	4		

2 38

Distorted Guitar

T	3 3 3 4 4 3	3 3 3 3 3 4 3 3	1 3 3 3 4 4 3	3 3 3 3 4 3 3
A				
B				

42

T	1 3 3 3 4 4 3	3 3 3 4 3 3	1 3 3 3 4 3	3 3 3 4 3 3
A				
B				

46

T	3 1	0 0 3	3 1	0 0 3
A	3 3 3 3 3 3	5 1 1 5	3 3 3 3 3 3	5 1 1 5
B		6	6	6

50

T	3 3 1	0 0 3	3 1
A	3 3 3 3 3 3	5 1 1 5	3 3 3 3 3 3
B		6	6

53

37

T	0 0 3	
A	5 1 1 5	
B	6	

Better Than Ezra - Good

Distorted Guitar

♩ = 112,000061

53

Measure 53: A 4-measure phrase. The first measure contains a thick black bar across all strings, indicating a full chord or a specific technique. The second measure has fret numbers 1, 1, 1, 1, 1, 1 on strings 2-7. The third measure has fret numbers 0, 0, 0, 4, 4, 3. The fourth measure has fret numbers 3, 3, 3, 3, 3, 3.

56

Measure 59: A 4-measure phrase. The first measure has fret numbers 3, 3, 3, 1, 1, 1. The second measure has fret numbers 1, 1, 1, 1, 1, 1. The third measure has fret numbers 0, 0, 0, 4, 4, 3. The fourth measure has fret numbers 3, 3, 3, 3, 3, 3.

59

Measure 62: A 4-measure phrase. The first measure has fret numbers 0, 0, 0, 4, 4, 3. The second measure has fret numbers 3, 3, 3, 3, 3, 3. The third measure has fret numbers 0, 0, 0, 4, 4, 3. The fourth measure has fret numbers 3, 3, 3, 3, 3, 3.

62

8

Measure 72: A 4-measure phrase. The first measure contains a thick black bar across all strings. The second measure has fret numbers 3, 3, 3, 1, 1, 1. The third measure has fret numbers 0, 0, 0, 4, 4, 3. The fourth measure has fret numbers 3, 3, 3, 3, 3, 3.

72

Measure 75: A 4-measure phrase. The first measure has fret numbers 3, 3, 3, 1, 1, 1. The second measure has fret numbers 1, 1, 1, 1, 1, 1. The third measure has fret numbers 0, 0, 0, 4, 4, 3. The fourth measure has fret numbers 3, 3, 3, 3, 3, 3.

75

Measure 79: A 4-measure phrase. The first measure has fret numbers 0, 0, 0, 4, 4, 3. The second measure has fret numbers 3, 3, 3, 3, 3, 3. The third measure has fret numbers 0, 0, 0, 4, 4, 3. The fourth measure has fret numbers 3, 3, 3, 3, 3, 3.

79

Measure 82: A 4-measure phrase. The first measure has fret numbers 3, 3, 3, 1, 1, 1. The second measure has fret numbers 3, 3, 3, 3, 3, 3. The third measure has fret numbers 0, 0, 0, 4, 4, 3. The fourth measure has fret numbers 3, 3, 3, 3, 3, 3.

82

Measure 84: A 4-measure phrase. The first measure has fret numbers 3, 3, 3, 1, 1, 1. The second measure has fret numbers 1, 1, 1, 1, 1, 1. The third measure has fret numbers 0, 0, 0, 4, 4, 3. The fourth measure has fret numbers 3, 3, 3, 3, 3, 3.

84

Measure 86: A 4-measure phrase. The first measure has fret numbers 3, 3, 3, 1, 1, 1. The second measure has fret numbers 3, 3, 3, 3, 3, 3. The third measure has fret numbers 0, 0, 0, 4, 4, 3. The fourth measure has fret numbers 3, 3, 3, 3, 3, 3.

86

3

Measure 89: A 4-measure phrase. The first measure has fret numbers 3, 3, 3, 3, 3, 3. The second measure has fret numbers 1, 1, 1, 1, 1, 1. The third measure has fret numbers 0, 0, 0, 4, 4, 3. The fourth measure contains a thick black bar across all strings.

Better Than Ezra - Good

Distorted Guitar

♩ = 112,000061

33

A guitar tab for measures 33, 34, and 35. The strings are labeled E, B, G, D, A, E from top to bottom. Measure 33 shows a thick black bar across all strings. Measure 34 has fret numbers 1 1 3 3 on the D string, 1 1 3 3 on the A string, and 3 3 on the E string. Measure 35 has fret numbers 0 0 on the D string, 1 1 on the A string, 3 3 on the E string, and 6 6 on the B string.

36

53

A guitar tab for measures 36, 37, and 38. The strings are labeled T, A, B from top to bottom. Measure 36 has fret numbers 1 1 3 3 on the A string, 1 1 3 3 on the B string, and 3 3 on the T string. Measure 37 has fret numbers 0 0 on the A string, 1 1 on the B string, 3 3 on the T string, and 6 6 on the A string. Measure 38 shows a thick black bar across all strings.

Better Than Ezra - Good

bass

♩ = 112,000061

61

Measure 61: Bass line in 4/4 time. It begins with a whole rest. The second measure contains a quarter note G2, followed by eighth notes G2, A2, B2, C3, D3, E3, F3, G3. The third measure contains a quarter note G2, followed by eighth notes G2, A2, B2, C3, D3, E3, F3, G3. The fourth measure contains a quarter note G2, followed by eighth notes G2, A2, B2, C3, D3, E3, F3, G3.

64

Measure 64: Bass line in 4/4 time. It contains eighth notes G2, A2, B2, C3, D3, E3, F3, G3. The second measure contains eighth notes G2, A2, B2, C3, D3, E3, F3, G3. The third measure contains eighth notes G2, A2, B2, C3, D3, E3, F3, G3. The fourth measure contains eighth notes G2, A2, B2, C3, D3, E3, F3, G3. The fifth measure contains eighth notes G2, A2, B2, C3, D3, E3, F3, G3. The sixth measure contains eighth notes G2, A2, B2, C3, D3, E3, F3, G3. The seventh measure contains eighth notes G2, A2, B2, C3, D3, E3, F3, G3. The eighth measure contains eighth notes G2, A2, B2, C3, D3, E3, F3, G3.

68

21

Measure 68: Bass line in 4/4 time. It contains eighth notes G2, A2, B2, C3, D3, E3, F3, G3. The second measure contains eighth notes G2, A2, B2, C3, D3, E3, F3, G3. The third measure contains eighth notes G2, A2, B2, C3, D3, E3, F3, G3. The fourth measure contains eighth notes G2, A2, B2, C3, D3, E3, F3, G3. The fifth measure contains eighth notes G2, A2, B2, C3, D3, E3, F3, G3. The sixth measure contains eighth notes G2, A2, B2, C3, D3, E3, F3, G3. The seventh measure contains eighth notes G2, A2, B2, C3, D3, E3, F3, G3. The eighth measure contains eighth notes G2, A2, B2, C3, D3, E3, F3, G3. The ninth measure contains eighth notes G2, A2, B2, C3, D3, E3, F3, G3. The tenth measure contains eighth notes G2, A2, B2, C3, D3, E3, F3, G3. The eleventh measure contains eighth notes G2, A2, B2, C3, D3, E3, F3, G3. The twelfth measure contains eighth notes G2, A2, B2, C3, D3, E3, F3, G3. The thirteenth measure contains eighth notes G2, A2, B2, C3, D3, E3, F3, G3. The fourteenth measure contains eighth notes G2, A2, B2, C3, D3, E3, F3, G3. The fifteenth measure contains eighth notes G2, A2, B2, C3, D3, E3, F3, G3. The sixteenth measure contains eighth notes G2, A2, B2, C3, D3, E3, F3, G3. The seventeenth measure contains eighth notes G2, A2, B2, C3, D3, E3, F3, G3. The eighteenth measure contains eighth notes G2, A2, B2, C3, D3, E3, F3, G3. The nineteenth measure contains eighth notes G2, A2, B2, C3, D3, E3, F3, G3. The twentieth measure contains eighth notes G2, A2, B2, C3, D3, E3, F3, G3. The twenty-first measure contains eighth notes G2, A2, B2, C3, D3, E3, F3, G3.

BASS

Better Than Ezra - Good

♩ = 112,000061

69

Musical notation for bass line starting at measure 69. It features a 4/4 time signature, a key signature of one flat, and a sequence of eighth and quarter notes with slurs and accents.

72

Musical notation for bass line starting at measure 72. It continues the rhythmic pattern of eighth and quarter notes with slurs and accents.

76

12

Musical notation for bass line starting at measure 76. It concludes with a double bar line and a final measure containing a whole rest.

Better Than Ezra - Good

BASS1

♩ = 112,000061

5

8

11

14

17

21

24

28

31

Detailed description: This image shows the bass line for the song 'Good' by Better Than Ezra. It consists of ten staves of music in 4/4 time, starting with a tempo of 112 bpm. The key signature has one flat (Bb). The bass line is characterized by a steady eighth-note pattern with occasional triplets and slurs. The notes are primarily in the lower register, with some higher notes in the final staves. The piece ends with a double bar line on the 31st measure.

V.S.

