

Bob & The Wailers Marley - JAMMIN`

♩ = 122,000816

DRUMS

MUTED GTR

JAZZ GTR

DISTORTION

OVERDRIVE

FRETLESS

ORGAN 1

ORGAN 3

SYNVOX

♩ = 122,000816

MELODY

A.PIANO 2

6

DRUMS

JAZZ GTR

DISTORTION

FRETLESS

ORGAN 1

ORGAN 3

MELODY

A.PIANO 2



9

DRUMS

JAZZ GTR

DISTORTION

FRETLESS

ORGAN 1

ORGAN 3

MELODY

A.PIANO 2

12

DRUMS

MUTED GTR

JAZZ GTR

DISTORTION

FRETLESS

ORGAN 1

ORGAN 3

SYNVOX

MELODY



15

DRUMS

MUTED GTR

JAZZ GTR

DISTORTION

FRETLESS

ORGAN 1

ORGAN 3

MELODY

18

DRUMS

MUTED GTR

JAZZ GTR

DISTORTION

FRETLESS

ORGAN 1

ORGAN 3

SYNVOX

MELODY



20

DRUMS

MUTED GTR

JAZZ GTR

DISTORTION

OVERDRIVE

FRETLESS

ORGAN 1

ORGAN 3

MELODY

22

DRUMS

MUTED GTR

JAZZ GTR

DISTORTION

OVERDRIVE

FRETLESS

ORGAN 1

ORGAN 3

SYNVOX

MELODY



25

DRUMS

MUTED GTR

JAZZ GTR

DISTORTION

OVERDRIVE

FRETLESS

ORGAN 1

ORGAN 3

SYNVOX

MELODY

28

DRUMS

MUTED GTR

JAZZ GTR

DISTORTION

FRETLESS

ORGAN 1

ORGAN 3

SYNVOX

MELODY



31

DRUMS

MUTED GTR

JAZZ GTR

DISTORTION

FRETLESS

ORGAN 1

ORGAN 3

SYNVOX

MELODY

34

DRUMS

MUTED GTR

JAZZ GTR

DISTORTION

OVERDRIVE

FRETLESS

ORGAN 1

ORGAN 3

SYNVOX

MELODY



37

DRUMS

MUTED GTR

JAZZ GTR

DISTORTION

OVERDRIVE

FRETLESS

ORGAN 1

ORGAN 3

SYNVOX

MELODY

40

DRUMS

MUTED GTR

JAZZ GTR

DISTORTION

OVERDRIVE

FRETLESS

ORGAN 1

ORGAN 3

SYNVOX

MELODY



43

DRUMS

MUTED GTR

JAZZ GTR

DISTORTION

FRETLESS

ORGAN 1

ORGAN 3

SYNVOX

MELODY

46

DRUMS

MUTED GTR

JAZZ GTR

DISTORTION

FRETLESS

ORGAN 1

ORGAN 3

SYNVOX

MELODY



49

DRUMS

MUTED GTR

JAZZ GTR

DISTORTION

FRETLESS

ORGAN 1

ORGAN 3

SYNVOX

MELODY

52

DRUMS

MUTED GTR

JAZZ GTR

FRETLESS

ORGAN 1

ORGAN 3

SYNVOX

MELODY



57

DRUMS

MUTED GTR

JAZZ GTR

DISTORTION

FRETLESS

ORGAN 1

ORGAN 3

SYNVOX

MELODY

61

DRUMS

MUTED GTR

JAZZ GTR

DISTORTION

FRETLESS

ORGAN 1

ORGAN 3

SYNVOX

MELODY



64

DRUMS

MUTED GTR

JAZZ GTR

DISTORTION

FRETLESS

ORGAN 1

ORGAN 3

SYNVOX

MELODY

67

DRUMS

MUTED GTR

JAZZ GTR

DISTORTION

FRETLESS

ORGAN 1

ORGAN 3

SYNVOX

MELODY



70

DRUMS

MUTED GTR

JAZZ GTR

DISTORTION

OVERDRIVE

FRETLESS

ORGAN 1

ORGAN 3

MELODY

72

DRUMS

MUTED GTR

JAZZ GTR

DISTORTION

OVERDRIVE

FRETLESS

ORGAN 1

ORGAN 3

SYNVOX

MELODY



74

DRUMS

MUTED GTR

JAZZ GTR

DISTORTION

FRETLESS

ORGAN 1

ORGAN 3

SYNVOX

MELODY

77

DRUMS

MUTED GTR

JAZZ GTR

DISTORTION

FRETLESS

ORGAN 1

ORGAN 3

SYNVOX

MELODY



80

DRUMS

MUTED GTR

JAZZ GTR

DISTORTION

FRETLESS

ORGAN 1

ORGAN 3

SYNVOX

MELODY

83

DRUMS

MUTED GTR

JAZZ GTR

DISTORTION

FRETLESS

ORGAN 1

ORGAN 3

SYNVOX

MELODY



86

DRUMS

MUTED GTR

JAZZ GTR

DISTORTION

FRETLESS

ORGAN 1

ORGAN 3

SYNVOX

MELODY

A.PIANO 2

89

DRUMS

MUTED GTR

JAZZ GTR

DISTORTION

FRETLESS

ORGAN 1

ORGAN 3

SYNVOX

MELODY



92

DRUMS

MUTED GTR

JAZZ GTR

DISTORTION

FRETLESS

ORGAN 1

ORGAN 3

SYNVOX

MELODY

A.PIANO 2

94

DRUMS

MUTED GTR

JAZZ GTR

DISTORTION

FRETLESS

ORGAN 1

ORGAN 3

SYNOX

MELODY

A.PIANO 2



97

DRUMS

MUTED GTR

JAZZ GTR

DISTORTION

FRETLESS

ORGAN 1

ORGAN 3

MELODY

A.PIANO 2

100

DRUMS

MUTED GTR

JAZZ GTR

DISTORTION

FRETLESS

ORGAN 1

ORGAN 3

MELODY

A.PIANO 2

Detailed description: This block contains the musical notation for measures 100 and 101. It features ten staves: DRUMS (top), MUTED GTR, JAZZ GTR, DISTORTION, FRETLESS, ORGAN 1, ORGAN 3, MELODY, and A.PIANO 2 (bottom). The notation includes various rhythmic patterns, triplets, and chordal structures. A double bar line is present at the end of measure 101.



102

DRUMS

MUTED GTR

JAZZ GTR

DISTORTION

FRETLESS

ORGAN 1

ORGAN 3

MELODY

A.PIANO 2

Detailed description: This block contains the musical notation for measures 102 and 103. It features ten staves: DRUMS (top), MUTED GTR, JAZZ GTR, DISTORTION, FRETLESS, ORGAN 1, ORGAN 3, MELODY, and A.PIANO 2 (bottom). The notation includes various rhythmic patterns, triplets, and chordal structures. A double bar line is present at the end of measure 103.

105

DRUMS

MUTED GTR

JAZZ GTR

DISTORTION

FRETLESS

ORGAN 1

ORGAN 3

MELODY

A.PIANO 2



107

DRUMS

JAZZ GTR

FRETLESS

ORGAN 3

A.PIANO 2

Bob & The Wailers Marley - JAMMIN`

DRUMS

♩ = 122,000816

6

9

11

13

16

18

20

22

24

V.S.

Drum notation for measures 26 through 44. The notation is presented in two systems per measure, with the top system showing the drum set and the bottom system showing the corresponding musical notes. The drum set includes a snare drum (S), a hi-hat (H), and a kick drum (K). The musical notes are primarily eighth and sixteenth notes, often grouped in threes. The notation is consistent across all measures, with the only variation being the placement of the snare drum in the final measure of each system.

Measures 26, 28, 30, 32, 34, 36, 38, 40, 42, and 44 show a consistent pattern of drumming and musical notation. The snare drum is positioned on the second line of the drum set in all measures except for the final measure of each system, where it is positioned on the first line.

DRUMS

46

48

50

53

58

61

64

66

68

70

V.S.

Drum notation for measures 72 through 90. Each measure is represented by a staff with a double bar line on the left. Above the staff, 'x' marks indicate drum hits. Below the staff, musical notation shows the rhythm, including eighth notes, quarter notes, and rests. Triplet markings (a '3' in a bracket) are used for groups of three notes. The notation is consistent across all measures, showing a repeating rhythmic pattern.

DRUMS

92

Musical notation for drum set at measure 92. The top staff shows a snare drum pattern with 'x' marks. The bottom staff shows a bass drum pattern with eighth notes and triplets. A '3' is written below the first triplet.

94

Musical notation for drum set at measure 94. Similar to measure 92, with snare and bass drum patterns. A '3' is written below the first triplet.

96

Musical notation for drum set at measure 96. Similar to measure 92, with snare and bass drum patterns. A '3' is written below the first triplet.

98

Musical notation for drum set at measure 98. Similar to measure 92, with snare and bass drum patterns. A '3' is written below the first triplet.

100

Musical notation for drum set at measure 100. Similar to measure 92, with snare and bass drum patterns. A '3' is written below the first triplet.

102

Musical notation for drum set at measure 102. Similar to measure 92, with snare and bass drum patterns. A '3' is written below the first triplet.

104

Musical notation for drum set at measure 104. Similar to measure 92, with snare and bass drum patterns. A '3' is written below the first triplet.

106

Musical notation for drum set at measure 106. Similar to measure 92, with snare and bass drum patterns. A '3' is written below the first triplet. The measure ends with a double bar line and a '2' below it.

MUTED GTR

Bob & The Wailers Marley - JAMMIN`

♩ = 122,000816

10

14

17

20

23

26

29

33

37

40

3

V.S.

43



47



51



56



63



67



70



73



77



81



85



89



93



97



100



104



6

JAZZ GTR

Bob & The Wailers Marley - JAMMIN`

♩ = 122,000816

2

7

11

14

17

20

23

26

29

32

V.S.

JAZZ GTR

35

38

38

41

41

44

44

48

48

51

51

59

59

63

63

66

66

69

69

72

73

3

76

79

82

85

89

92

3

95

3

98

101

104



107



DISTORTION

Bob & The Wailers Marley - JAMMIN`

♩ = 122,000816

2

7

11

15

19

23

27

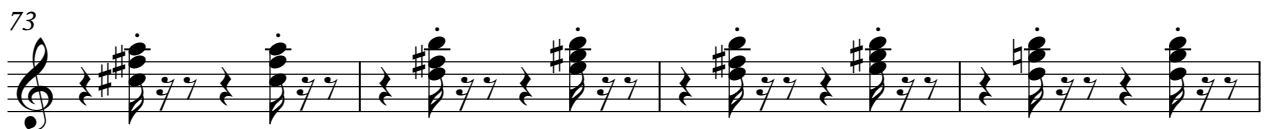
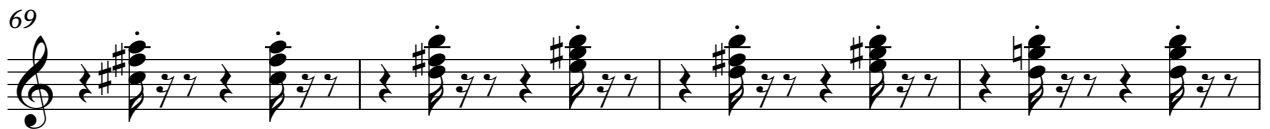
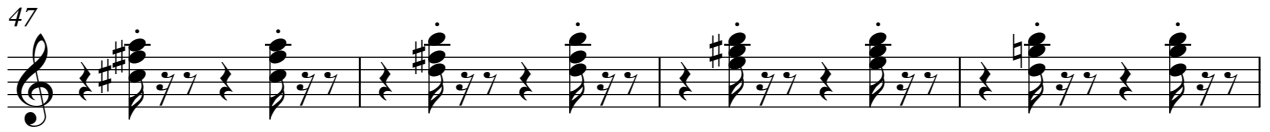
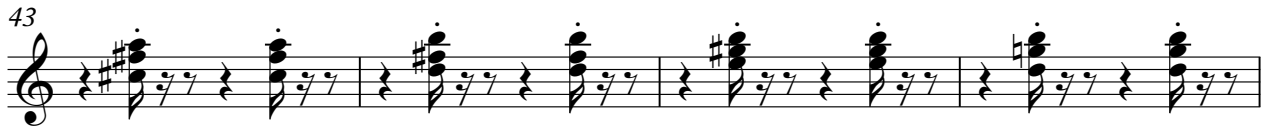
31

35

39

V.S.

DISTORTION



DISTORTION

89



93



97



101



104



OVERDRIVE

Bob & The Wailers Marley - JAMMIN`

♩ = 122,000816

18

24

9

37

43

27

72

39

FRETLESS

Bob & The Wailers Marley - JAMMIN`

♩ = 122,000816

2

7

11

15

19

23

26

29

32

35

V.S.

39



42



45



48



52



58



63



67



70



73



ORGAN 1

Bob & The Wailers Marley - JAMMIN`

♩ = 122,000816

2

6

9

12

15

18

21

24

27

V.S.

30



33



36



39



42



45



48



51



60



63



95



98



101



104



ORGAN 3

Bob & The Wailers Marley - JAMMIN`

♩ = 122,000816

2

7

11

15

19

23

27

31

35

V.S.

39



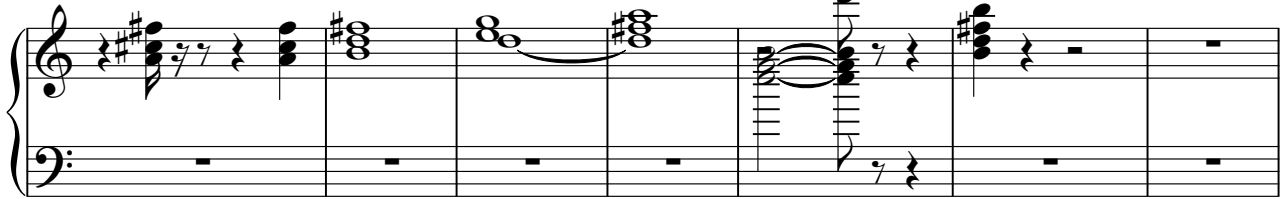
43



47



51



58



62



65



69



73



77

81

85

89

93

97

101

105

108

♩ = 122,000816

12 3

18 2

23 2

30 2

35 2 2

42

46

50

55 4

62

66 3

72 2

77

81 3

87 2

92

95 15

Bob & The Wailers Marley - JAMMIN`

MELODY

♩ = 122,000816

5 3

12

17

21

25

29

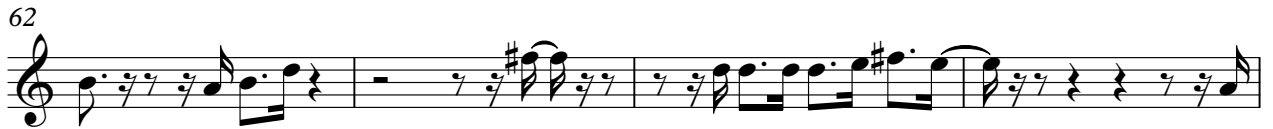
33

37

41

45

V.S.



88



92



97



101



104



A.PIANO 2

Bob & The Wailers Marley - JAMMIN`

♩ = 122,000816

2

7

11

74

88

93

99

101

104

107

4