

Brassens - Les Passantes 2

$\text{♩} = 80,000000$

Melodie

Alto

Basso

4

Melodie

Alto

Basso

6

Melodie

Alto

Basso

9

Melodie

Alto

Basso

12

Melodie

Alto

Basso

14

Melodie

Alto

Basso

17

Melodie

Alto

Basso

20

Melodie

Alto

Basso

22

Melodie

Alto

Basso

25

Melodie

Alto

Basso

28

Melodie

Alto

Basso

30

Melodie

Alto

Basso

33

Melodie

Alto

Basso

36

Melodie

Alto

Basso

38

Melodie

Alto

Basso

41

Melodie

Alto

Basso

44

Melodie

Alto

Basso

46

Melodie

Alto

Basso

49

Melodie

Alto

Basso

52

Melodie

Alto

Basso

54

Melodie

Alto

Basso

57

Melodie

Alto

Basso

60

Melodie

Alto

Basso

62

Melodie

Alto

Basso

65

Melodie

Alto

Basso

68

Melodie

Alto

Basso

70

Melodie

Alto

Basso

73

Melodie

Alto

Basso

76

Melodie

Alto

Basso

78

Melodie

Alto

Basso

81

Melodie

Alto

Basso

84

Melodie

Alto

Basso

86

Melodie

Alto

Basso

89

Melodie

Alto

Basso

92

Melodie

Alto

Basso

94

Melodie

Alto

Basso

97

Melodie

Alto

Basso

100

Melodie

Alto

Basso

102

Melodie

Alto

Basso

105

Melodie

Alto

Basso

108

Melodie

Alto

Basso

110

Melodie

Alto

Basso

113

Melodie

Alto

Basso

Brassens - Les Passantes 2

Melodie

♩ = 80,000000

First musical staff in bass clef, 6/8 time signature. It begins with a whole rest followed by a quarter rest, then a quarter note G2, and continues with a melodic line of eighth and quarter notes.

7

Second musical staff, starting at measure 7. It continues the melodic line with eighth and quarter notes, including a half note G2.

13

Third musical staff, starting at measure 13. It features a half note G2 and continues with eighth and quarter notes.

19

Fourth musical staff, starting at measure 19. It continues the melodic line with eighth and quarter notes.

25

Fifth musical staff, starting at measure 25. It includes a half note G2 and continues with eighth and quarter notes.

31

Sixth musical staff, starting at measure 31. It continues the melodic line with eighth and quarter notes.

37

Seventh musical staff, starting at measure 37. It includes a half note G2 and continues with eighth and quarter notes.

43

Eighth musical staff, starting at measure 43. It continues the melodic line with eighth and quarter notes.

49

Ninth musical staff, starting at measure 49. It includes a half note G2 and continues with eighth and quarter notes.

55

Tenth musical staff, starting at measure 55. It continues the melodic line with eighth and quarter notes.

V.S.

Melodie

61



67



73



79



85



91



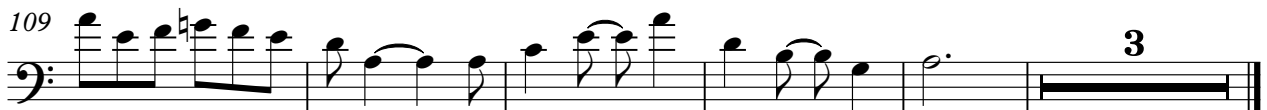
97



103



109



Brassens - Les Passantes 2

Alto

♩ = 80,000000

4

7

10

13

16

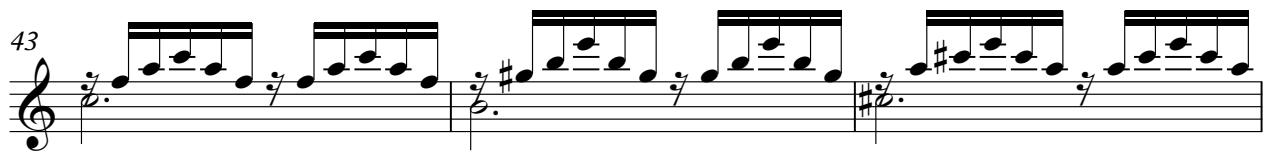
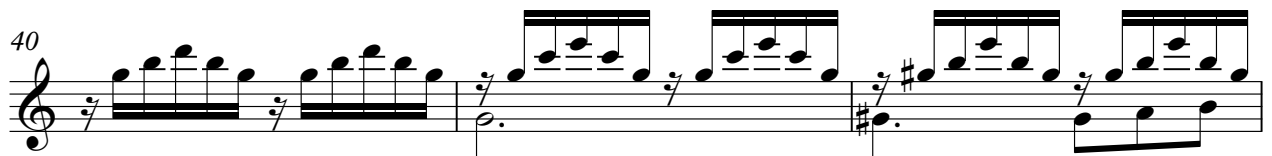
19

22

25

28

V.S.



Alto

61

64

67

70

73

76

79

82

85

88

V.S.

Brassens - Les Passantes 2

Basso

♩ = 80,000000

8

16

24

32

40

48

56

64

72

V.S.

2

80

Basso

This musical staff covers measures 80 through 87. It begins with a treble clef and a key signature of one sharp (F#). The notation includes quarter notes, eighth notes, and beamed eighth notes. A 'Basso' instruction is placed above the staff. The staff concludes with a double bar line.

88

This musical staff covers measures 88 through 95. It continues with the same treble clef and key signature. The notation features quarter notes and eighth notes. The staff ends with a double bar line.

96

This musical staff covers measures 96 through 103. It maintains the treble clef and key signature. The notation includes quarter notes, eighth notes, and beamed eighth notes. The staff concludes with a double bar line.

104

This musical staff covers measures 104 through 109. It continues with the same treble clef and key signature. The notation consists of quarter notes and eighth notes. The staff ends with a double bar line.

110

This musical staff covers measures 110 through 115. It continues with the same treble clef and key signature. The notation includes quarter notes and eighth notes. The staff concludes with a double bar line.