

Christian - to god be the glory

♩ = 112,000061

Soprano

Alto

Tenor

♩ = 112,000061

Bass

Detailed description: This block contains the first five measures of a musical score for four voices: Soprano, Alto, Tenor, and Bass. The music is in 3/4 time and D major. The tempo is marked as ♩ = 112,000061. The Soprano part begins with a whole rest in the first measure, followed by a half note G4, a quarter note A4, a quarter note B4, a quarter note C5, a quarter note B4, a quarter note A4, a quarter note G4, and a half note F#4. The Alto part has whole rests in the first two measures, then a half note G4, a quarter note A4, a quarter note B4, a quarter note C5, a quarter note B4, a quarter note A4, and a half note G4. The Tenor part starts with a whole note D3, followed by a half note E3, a quarter note F#3, a quarter note G3, a quarter note A3, a quarter note B3, a quarter note C4, a quarter note B3, a quarter note A3, a quarter note G3, and a half note F#3. The Bass part begins with a whole note D2, followed by a half note E2, a quarter note F#2, a quarter note G2, a quarter note A2, a quarter note B2, a quarter note C3, a quarter note B2, a quarter note A2, a quarter note G2, and a half note F#2.



6

Soprano

Alto

Tenor

Bass

Detailed description: This block contains measures 6 through 10 of the musical score. The Soprano part continues with a half note E4, a quarter note F#4, a quarter note G4, a quarter note A4, a quarter note B4, a quarter note C5, a quarter note B4, a quarter note A4, a quarter note G4, a quarter note F#4, a quarter note E4, and a half note D4. The Alto part continues with a half note E4, a quarter note F#4, a quarter note G4, a quarter note A4, a quarter note B4, a quarter note C5, a quarter note B4, a quarter note A4, a quarter note G4, a quarter note F#4, a quarter note E4, and a half note D4. The Tenor part continues with a whole note D3, followed by a half note E3, a quarter note F#3, a quarter note G3, a quarter note A3, a quarter note B3, a quarter note C4, a quarter note B3, a quarter note A3, a quarter note G3, and a half note F#3. The Bass part continues with a whole note D2, followed by a half note E2, a quarter note F#2, a quarter note G2, a quarter note A2, a quarter note B2, a quarter note C3, a quarter note B2, a quarter note A2, a quarter note G2, and a half note F#2.

12

Musical score for Soprano, Alto, Tenor, and Bass, measures 12-17. The score is written in a key signature of one flat (B-flat) and a common time signature. The Soprano part is in a soprano clef, Alto in an alto clef, Tenor in a tenor clef, and Bass in a bass clef. The music consists of eighth and quarter notes with various accidentals.



18

Musical score for Soprano, Alto, Tenor, and Bass, measures 18-23. The score is written in a key signature of one flat (B-flat) and a common time signature. The Soprano part is in a soprano clef, Alto in an alto clef, Tenor in a tenor clef, and Bass in a bass clef. The music consists of eighth and quarter notes with various accidentals.

24

Soprano

Alto

Tenor

Bass



00:00:52:13
33.3,00
2nd Stanza

30

Soprano

Alto

Tenor

Bass

36

Soprano

Alto

Tenor

Bass



42

Soprano

Alto

Tenor

Bass

48

Soprano

Alto

Tenor

Bass



52

Soprano

Alto

Tenor

Bass

56

Soprano

Alto

Tenor

Bass



61

Soprano

Alto

Tenor

Bass

$\text{♩} = 109109005904902100507000030109395999$

49

2

58

63

♩ = 109,9999078,9999165,99994,0000162,000063,000097,999985,000000 = 93,0,999995

Christian - to god be the glory

Tenor

♩ = 112,000061



V.S.

2

Tenor

59

Musical notation for Tenor part, measures 59-62. The notation is on a single bass clef staff. Measure 59: quarter note G#4, quarter note A4. Measure 60: quarter note B4, quarter note C5. Measure 61: quarter note D5, quarter note E5. Measure 62: quarter note F5, quarter note G5.

63

♩ = 109, 9919078, 99165, 9919440, 0162, 0106, 300000, 99965, 000000 = 93, 9988859954

Musical notation for piano accompaniment, measures 63-66. The notation is on a grand staff (treble and bass clefs). Measure 63: Treble clef has a whole rest; Bass clef has quarter notes G#4, A4, B4. Measure 64: Treble clef has a whole rest; Bass clef has quarter notes C5, D5, E5. Measure 65: Treble clef has a whole rest; Bass clef has quarter notes F5, G5, A5. Measure 66: Treble clef has a whole rest; Bass clef has a half note G5 with a fermata.

Christian - to god be the glory

Bass

♩ = 112,000061



9



17



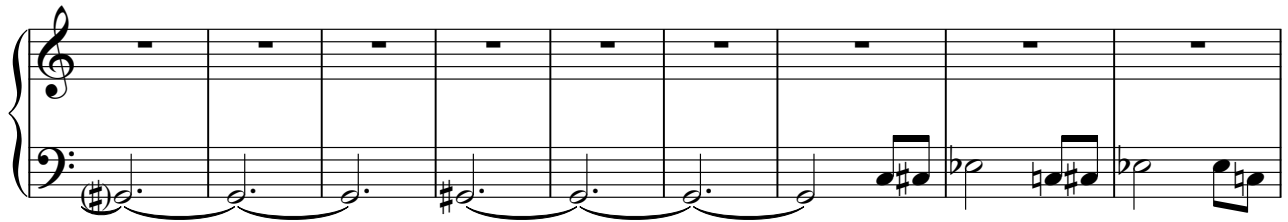
25



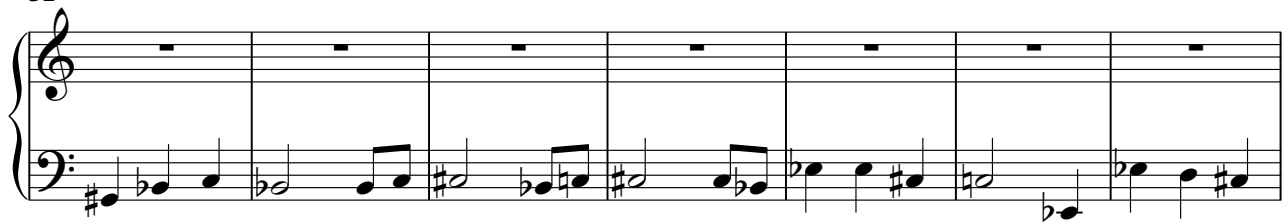
33



43



52



59

♩ = 109,07990891605410070098950999854

