

♩ = 92,045433

Solo

Solo

Solo

Solo

6

Solo

Solo

Solo

Solo

11

Solo

Solo

Solo

Solo

Solo

♩ = 92,045433

The first staff of music contains five measures. It begins with a treble clef and a key signature of one flat (Bb). The time signature is 4/4. The notes are: Measure 1: quarter note Bb, quarter note A, eighth note G, eighth note F, quarter note E; Measure 2: quarter note D, quarter note C, quarter rest; Measure 3: quarter note Bb, eighth note A, eighth note G, quarter note F, quarter note E; Measure 4: quarter note D, quarter note C, quarter rest; Measure 5: quarter note Bb, quarter note A, eighth note G, eighth note F, quarter note E.

6

The second staff of music contains five measures. It begins with a treble clef and a key signature of one flat (Bb). The notes are: Measure 6: quarter note D, quarter note C, quarter rest; Measure 7: quarter note Bb, eighth note A, eighth note G, quarter note F, quarter note E; Measure 8: quarter note D, quarter note C, quarter rest; Measure 9: quarter note Bb, eighth note A, eighth note G, quarter note F, quarter note E; Measure 10: quarter note D, quarter note C, quarter rest.

11

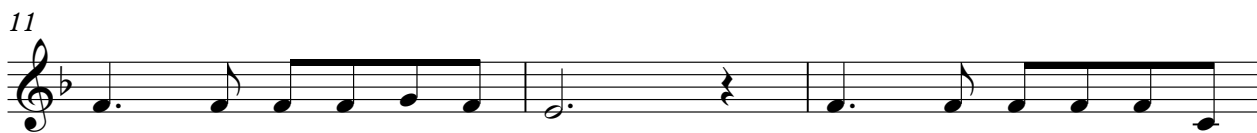
The third staff of music contains three measures. It begins with a treble clef and a key signature of one flat (Bb). The notes are: Measure 11: quarter note Bb, quarter note A, eighth note G, eighth note F, quarter note E; Measure 12: quarter note D, quarter note C, quarter rest; Measure 13: quarter note Bb, quarter note A, eighth note G, eighth note F, quarter note E.

14

The fourth staff of music contains four measures. It begins with a treble clef and a key signature of one flat (Bb). The notes are: Measure 14: quarter note D, quarter note C, quarter rest; Measure 15: quarter note Bb, eighth note A, eighth note G, quarter note F, quarter note E; Measure 16: quarter note D, quarter note C, quarter rest; Measure 17: whole rest.

Solo

♩ = 92,045433



Solo

♩ = 92,045433



Solo

♩ = 92,045433

