

Cranberries - Zombie

♩ = 165,000168

Standard Drums

Muted Guitar

Chorus Guitar

Overdrive Guita

Overdrive Guita

Fingered Bass

5

Chorus Guitar

8

Standard Drums

Chorus Guitar

Overdrive Guita

Fingered Bass

11

Standard Drums

Chorus Guitar

Overdrive Guita

Fingered Bass

13

Standard Drums

Chorus Guitar

Overdrive Guita

Fingered Bass

15

Standard Drums

Chorus Guitar

Overdrive Guita

Fingered Bass

17

Standard Drums

Chorus Guitar

Overdrive Guita

Fingered Bass

Detailed description: This system contains measures 17 and 18. The Standard Drums part features a steady quarter-note pattern on the snare and bass drum, with a cymbal crash at the start of measure 18. The Chorus Guitar part plays a series of chords in the treble clef, including a D major chord and a G major chord. The Overdrive Guita part plays a rhythmic pattern of eighth notes in the treble clef, primarily on the strings D, E, and F. The Fingered Bass part plays a simple bass line in the bass clef, consisting of quarter notes on the notes D, E, F, and G.

19

Standard Drums

Chorus Guitar

Overdrive Guita

Fingered Bass

Detailed description: This system contains measures 19 and 20. The Standard Drums part continues with the same quarter-note pattern. The Chorus Guitar part plays a series of chords, including a D major chord and a G major chord, with a melodic line in measure 20. The Overdrive Guita part continues with the eighth-note rhythmic pattern. The Fingered Bass part continues with the same quarter-note bass line.

21

Standard Drums

Chorus Guitar

Overdrive Guita

Fingered Bass

Detailed description: This system contains measures 21 and 22. The Standard Drums part continues with the same quarter-note pattern. The Chorus Guitar part plays a series of chords, including a D major chord and a G major chord, with a melodic line in measure 22. The Overdrive Guita part continues with the eighth-note rhythmic pattern. The Fingered Bass part continues with the same quarter-note bass line.

23

Standard Drums

Chorus Guitar

Overdrive Guita

Fingered Bass

25

Standard Drums

Muted Guitar

Chorus Guitar

Overdrive Guita

Fingered Bass

27

Standard Drums

Muted Guitar

Chorus Guitar

Overdrive Guita

Fingered Bass

30

Standard Drums

Muted Guitar

Chorus Guitar

Overdrive Guita

Fingered Bass

33

Standard Drums

Muted Guitar

Chorus Guitar

Overdrive Guita

Fingered Bass

36

Standard Drums

Chorus Guitar

Overdrive Guita

Fingered Bass

39

Standard Drums

Chorus Guitar

Fingered Bass

42

Standard Drums

Chorus Guitar

Fingered Bass

45

Standard Drums

Chorus Guitar

Fingered Bass

48

Standard Drums

Muted Guitar

Chorus Guitar

Fingered Bass

51

Standard Drums

Muted Guitar

Chorus Guitar

Fingered Bass

54

Standard Drums

Muted Guitar

Chorus Guitar

Fingered Bass

57

Standard Drums

Muted Guitar

Chorus Guitar

Fingered Bass

60

Standard Drums

Muted Guitar

Chorus Guitar

Fingered Bass

63

Standard Drums

Muted Guitar

Chorus Guitar

Fingered Bass

71

Standard Drums

Chorus Guitar

Overdrive Guita

Fingered Bass

Detailed description: This system contains measures 71 and 72. The Standard Drums part features a simple pattern of quarter notes on the snare and bass drum. The Chorus Guitar part consists of a series of chords, some with grace notes. The Overdrive Guita part has a rhythmic pattern of eighth notes with grace notes. The Fingered Bass part plays a steady eighth-note line.

73

Standard Drums

Chorus Guitar

Overdrive Guita

Fingered Bass

Detailed description: This system contains measures 73 and 74. The Standard Drums part has a similar pattern to the previous system but includes a cymbal crash in measure 73. The Chorus Guitar part continues with chords and grace notes. The Overdrive Guita part maintains its eighth-note rhythmic pattern. The Fingered Bass part continues with eighth notes.

75

Standard Drums

Chorus Guitar

Overdrive Guita

Fingered Bass

Detailed description: This system contains measures 75 and 76. The Standard Drums part continues with the same drum pattern. The Chorus Guitar part features more complex chordal textures. The Overdrive Guita part has a consistent eighth-note rhythm. The Fingered Bass part plays a steady eighth-note line.

77

Standard Drums

Chorus Guitar

Overdrive Guita

Fingered Bass

79

Standard Drums

Chorus Guitar

Overdrive Guita

Fingered Bass

81

Standard Drums

Chorus Guitar

Overdrive Guita

Fingered Bass

83

Standard Drums

Chorus Guitar

Overdrive Guita

Fingered Bass

Detailed description: This system covers measures 83 and 84. The Standard Drums part shows a drum kit with a snare drum, hi-hat, and kick drum. The Chorus Guitar part features a complex, multi-measure rest in measure 83, followed by a series of chords and single notes in measure 84. The Overdrive Guita part consists of a rhythmic pattern of eighth notes with a 'y' symbol indicating a muted note. The Fingered Bass part plays a simple bass line of quarter notes.

85

Standard Drums

Chorus Guitar

Overdrive Guita

Fingered Bass

Detailed description: This system covers measures 85 and 86. The Standard Drums part continues the drum pattern from the previous system. The Chorus Guitar part has a multi-measure rest in measure 85 and continues with chords and notes in measure 86. The Overdrive Guita part maintains its rhythmic eighth-note pattern. The Fingered Bass part continues with a steady bass line.

87

Standard Drums

Chorus Guitar

Overdrive Guita

Fingered Bass

Detailed description: This system covers measures 87 and 88. The Standard Drums part shows a variation in the drum pattern. The Chorus Guitar part has a multi-measure rest in measure 87 and continues with chords and notes in measure 88. The Overdrive Guita part continues its rhythmic pattern, with a key signature change to one sharp (F#) visible in measure 88. The Fingered Bass part continues with a steady bass line.

89

Standard Drums

Muted Guitar

Chorus Guitar

Overdrive Guita

Fingered Bass

91

Standard Drums

Muted Guitar

Chorus Guitar

Overdrive Guita

Fingered Bass

94

Standard Drums

Muted Guitar

Chorus Guitar

Overdrive Guita

Fingered Bass

97

Standard Drums

Muted Guitar

Chorus Guitar

Overdrive Guita

Fingered Bass

100

Standard Drums

Muted Guitar

Chorus Guitar

Overdrive Guita

Fingered Bass

103

Standard Drums

Muted Guitar

Chorus Guitar

Fingered Bass

106

Standard Drums

Muted Guitar

Chorus Guitar

Fingered Bass

109

Standard Drums

Muted Guitar

Chorus Guitar

Fingered Bass

112

Standard Drums

Muted Guitar

Chorus Guitar

Fingered Bass

115

Standard Drums

Muted Guitar

Chorus Guitar

Fingered Bass

118

Standard Drums

Muted Guitar

Chorus Guitar

Fingered Bass

121

Standard Drums

Muted Guitar

Chorus Guitar

Fingered Bass

124

Standard Drums

Muted Guitar

Chorus Guitar

Fingered Bass

127

Standard Drums

Muted Guitar

Chorus Guitar

Fingered Bass

129

Standard Drums

Muted Guitar

Chorus Guitar

Overdrive Guita

Fingered Bass

131

Standard Drums

Chorus Guitar

Overdrive Guita

Fingered Bass

133

Standard Drums

Chorus Guitar

Overdrive Guita

Fingered Bass

135

Standard Drums

Chorus Guitar

Overdrive Guita

Fingered Bass

137

Standard Drums

Chorus Guitar

Overdrive Guita

Fingered Bass

139

Standard Drums

Chorus Guitar

Overdrive Guita

Fingered Bass

141

Standard Drums

Chorus Guitar

Overdrive Guita

Fingered Bass

143

Standard Drums

Chorus Guitar

Overdrive Guita

Fingered Bass

145

Standard Drums

Chorus Guitar

Overdrive Guita

Fingered Bass

147

Standard Drums

Chorus Guitar

Overdrive Guita

Fingered Bass

149

Standard Drums

Chorus Guitar

Overdrive Guita

Fingered Bass

151

Standard Drums

Chorus Guitar

Overdrive Guita

Fingered Bass

157

Standard Drums

Chorus Guitar

Overdrive Guita

Fingered Bass

159

Standard Drums

Chorus Guitar

Overdrive Guita

Fingered Bass

161

Standard Drums

Chorus Guitar

Overdrive Guita

Overdrive Guita

Fingered Bass

164

Standard Drums

Overdrive Guita

Fingered Bass

167

Standard Drums

Overdrive Guita

Fingered Bass

170

Standard Drums

Chorus Guitar

Overdrive Guita

Fingered Bass

173

Standard Drums

Chorus Guitar

Overdrive Guita

Fingered Bass

176

Standard Drums

Chorus Guitar

Overdrive Guita

Overdrive Guita

Fingered Bass

179

Standard Drums

Chorus Guitar

Overdrive Guita

Overdrive Guita

Fingered Bass

181

Standard Drums

Chorus Guitar

Overdrive Guita

Overdrive Guita

Fingered Bass

183

Standard Drums

Chorus Guitar

Overdrive Guita

Overdrive Guita

Fingered Bass

185

Standard Drums

Chorus Guitar

Overdrive Guita

Overdrive Guita

Fingered Bass

187

Standard Drums

Chorus Guitar

Overdrive Guita

Overdrive Guita

Fingered Bass

189

Standard Drums

Chorus Guitar

Overdrive Guita

Overdrive Guita

Fingered Bass

191

Standard Drums

Chorus Guitar

Overdrive Guita

Overdrive Guita

Fingered Bass

193

Standard Drums

Chorus Guitar

Overdrive Guita

Overdrive Guita

Fingered Bass

195

Standard Drums

Chorus Guitar

Overdrive Guita

Overdrive Guita

Fingered Bass

197

Standard Drums

Chorus Guitar

Overdrive Guita

Overdrive Guita

Fingered Bass

199

Standard Drums

Chorus Guitar

Overdrive Guita

Overdrive Guita

Fingered Bass

201

Standard Drums

Chorus Guitar

Overdrive Guita

Overdrive Guita

Fingered Bass

203

Standard Drums

Chorus Guitar

Overdrive Guita

Fingered Bass

206

Standard Drums

Overdrive Guita

Fingered Bass

209

Standard Drums

Fingered Bass

212

Standard Drums

Musical notation for Standard Drums, measures 212-214. The notation is on a five-line staff. Measure 212 contains four eighth notes with 'x' marks above them, followed by a quarter note with an 'x' mark. Measure 213 contains a quarter note, a quarter note, a quarter note, and a quarter note. Measure 214 contains a quarter note, a quarter note, and a quarter note. The piece ends with a double bar line.

Fingered Bass

Musical notation for Fingered Bass, measures 212-214. The notation is on a five-line staff with a bass clef. Measure 212 contains a quarter note, a quarter note, a quarter note, and a quarter note. Measure 213 contains a quarter note, a quarter note, a quarter note, and a quarter note. Measure 214 contains a quarter note, a quarter note, and a quarter note. The piece ends with a double bar line.

Cranberries - Zombie

Standard Drums

♩ = 165,000168

7

12

18

24

28

32

36

40

44

48

V.S.

52

56

60

64

69

75

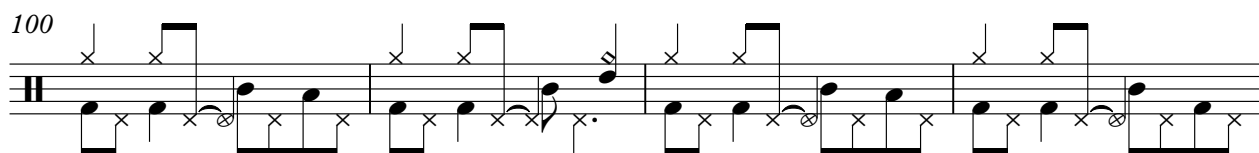
81

87

92

96

100




104



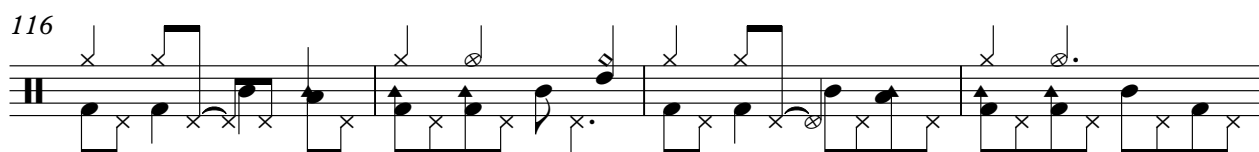
108



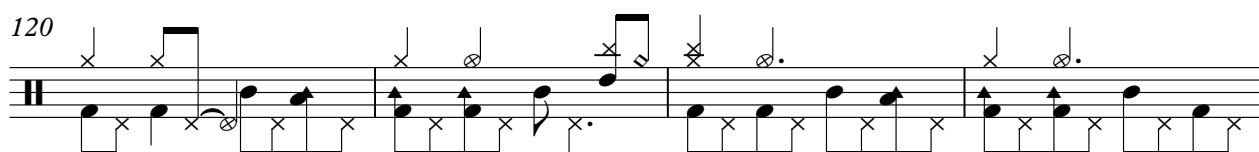
112



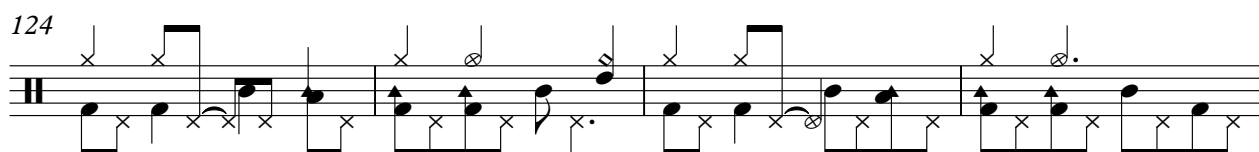
116



120



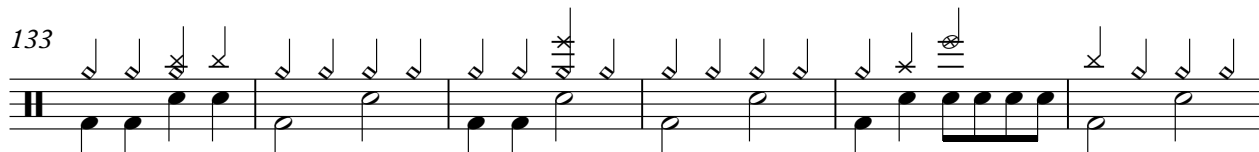
124



128



133



139



V.S.

Standard Drums

145

Musical notation for measure 145, featuring a drum staff with various rhythmic patterns and a guitar staff with notes and rests.

150

Musical notation for measure 150, featuring a drum staff with various rhythmic patterns and a guitar staff with notes and rests.

154

Musical notation for measure 154, featuring a drum staff with various rhythmic patterns and a guitar staff with notes and rests.

159

Musical notation for measure 159, featuring a drum staff with various rhythmic patterns and a guitar staff with notes and rests.

163

Musical notation for measure 163, featuring a drum staff with various rhythmic patterns and a guitar staff with notes and rests.

167

Musical notation for measure 167, featuring a drum staff with various rhythmic patterns and a guitar staff with notes and rests.

171

Musical notation for measure 171, featuring a drum staff with various rhythmic patterns and a guitar staff with notes and rests.

175

Musical notation for measure 175, featuring a drum staff with various rhythmic patterns and a guitar staff with notes and rests.

180

Musical notation for measure 180, featuring a drum staff with various rhythmic patterns and a guitar staff with notes and rests.

185

Musical notation for measure 185, featuring a drum staff with various rhythmic patterns and a guitar staff with notes and rests.

Standard Drums

190

Musical notation for measure 190, featuring a drum staff with a double bar line and a guitar staff with notes and stems. Above the drum staff, there are vertical stems with flags and asterisks indicating specific drum hits.

194

Musical notation for measure 194, featuring a drum staff with a double bar line and a guitar staff with notes and stems. Above the drum staff, there are vertical stems with flags and asterisks indicating specific drum hits.

198

Musical notation for measure 198, featuring a drum staff with a double bar line and a guitar staff with notes and stems. Above the drum staff, there are vertical stems with flags and asterisks indicating specific drum hits.

201

Musical notation for measure 201, featuring a drum staff with a double bar line and a guitar staff with notes and stems. Above the drum staff, there are vertical stems with flags and asterisks indicating specific drum hits.

204

Musical notation for measure 204, featuring a drum staff with a double bar line and a guitar staff with notes and stems. Above the drum staff, there are vertical stems with flags and asterisks indicating specific drum hits.

208

Musical notation for measure 208, featuring a drum staff with a double bar line and a guitar staff with notes and stems. Above the drum staff, there are vertical stems with flags and asterisks indicating specific drum hits.

211

Musical notation for measure 211, featuring a drum staff with a double bar line and a guitar staff with notes and stems. Above the drum staff, there are vertical stems with flags and asterisks indicating specific drum hits.

Muted Guitar

Cranberries - Zombie

♩ = 165,000168

24

28

32

16

50

54

58

62

65

24

90



94



98



102



106



110



114



118



122



126



129

85

Cranberries - Zombie

Chorus Guitar

♩ = 165,000168

5

9

13

17

22

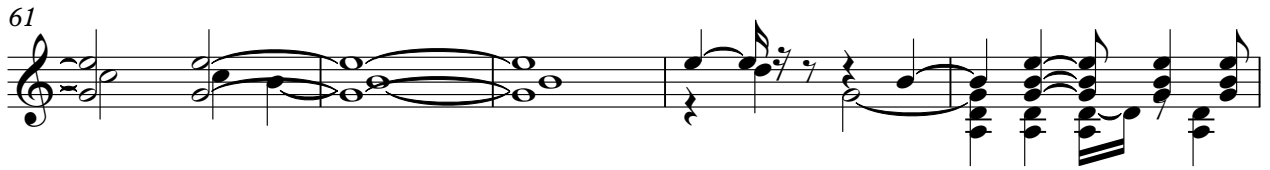
27

34

40

47

V.S.



103

110

117

124

130

134

138

142

146

150

V.S.

154

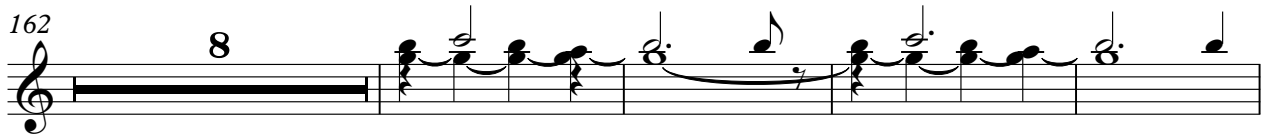


158



162

8



174



179



182



186



190



194



198



Cranberries - Zombie

Overdrive Guita

♩ = 165,000168

28

33

28

66

28

99

60

8

170

176

182

188

194

199

13

Overdrive Guita

Cranberries - Zombie

♩ = 165,000168

8

12

15

18

21

24

27 37

66

69

72

75

78

81

84

87

91

37

131

134



137



140



143



146



149



152



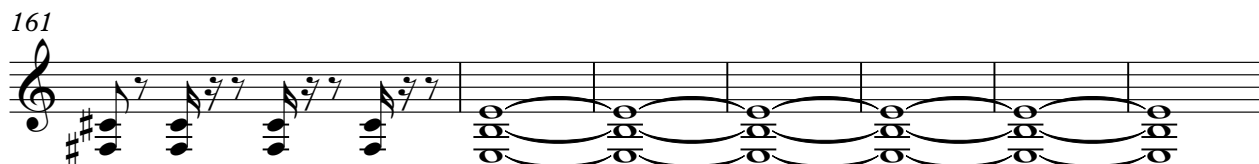
155



158



161



V.S.

The image displays a musical score for guitar, consisting of ten staves of notation. The first staff begins with a measure number of 168 and a measure number '10' above the staff, indicating a ten-measure phrase. The notation is in treble clef and features a series of eighth notes, often beamed in pairs, with various accidentals (sharps and naturals) and rests. The subsequent staves continue this rhythmic pattern, with some measures containing accidentals. The final staff, starting at measure 205, contains a seven-measure ending, indicated by a measure number '7' above the staff. This ending consists of several measures with long horizontal lines and curved lines underneath, representing sustained notes or a specific guitar technique, followed by a double bar line.

Cranberries - Zombie

Fingered Bass

♩ = 165,000168



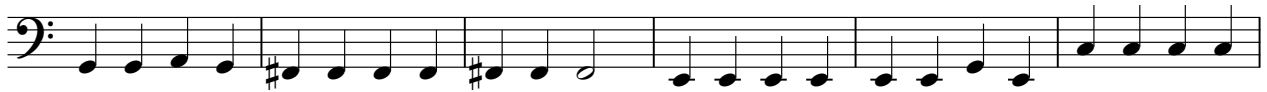
67



73



79



85



91



97



103



109



115



121



184



190



196



202



207



211

