

Dan Fogelberg - Same Old Lang Syne 3

♩ = 106,000137

Staff-1: Drum set notation with a snare drum (H) and cymbals (⊗) on a five-line staff.

Staff-4: Treble clef, key signature of one flat (Bb), 3/4 time signature. Contains three measures of sustained chords, each with a fermata.

Staff-2: Treble clef, key signature of one flat (Bb), 3/4 time signature. Contains three measures of a melodic line with eighth and quarter notes, including a fermata in the first measure.

Staff-3: Treble clef, key signature of one flat (Bb), 3/4 time signature. Contains three measures of a bass line with eighth and quarter notes, including a triplet of eighth notes in the second measure.

4

Staff-1: Drum set notation with a snare drum (H) and cymbals (⊗) on a five-line staff.

Staff-4: Treble clef, key signature of one flat (Bb), 3/4 time signature. Contains three measures of sustained chords, each with a fermata.

Staff-2: Treble clef, key signature of one flat (Bb), 3/4 time signature. Contains three measures of a melodic line with eighth and quarter notes, including a fermata in the second measure.

Staff-3: Treble clef, key signature of one flat (Bb), 3/4 time signature. Contains three measures of a bass line with eighth and quarter notes, including triplet markings (3) under the eighth notes in the second and third measures.

Copyright © 1997 by Me!
All Rights Reserved

Staff-1

Staff-4

Staff-5

Staff-2

Staff-3

Staff-1

Staff-4

Staff-5

Staff-2

Staff-3

13

Staff-1

Staff-4

Staff-5

Staff-2

Staff-3

3

16

Staff-1

Staff-4

Staff-5

Staff-2

Staff-3

Staff-1

Staff-4

Staff-5

Staff-2

Staff-3

Staff-1

Staff-4

Staff-5

Staff-2

Staff-3

25

Staff-1

Staff-4

Staff-2

Staff-3

28

Staff-1

Staff-4

Staff-2

Staff-3

31

Staff-1

Staff-4

Staff-5

Staff-2

Staff-3

34

Staff-1

Staff-4

Staff-5

Staff-2

Staff-3

37

Staff-1

Staff-4

Staff-5

Staff-2

Staff-3

40

Staff-1: Treble clef, guitar tablature with fret numbers and accidentals. Includes a double bar line with a repeat sign and a fermata over a measure.

Staff-6: Bass clef, bass line with eighth and sixteenth notes.

Staff-4: Treble clef, piano accompaniment with chords and long notes.

Staff-5: Treble clef, piano accompaniment with eighth and sixteenth notes.

Staff-2: Treble clef, vocal line with notes and rests.

Staff-3: Treble clef, piano accompaniment with chords and notes.

43

Staff-1: Treble clef, guitar tablature with fret numbers and accidentals. Includes a double bar line with a repeat sign and a fermata over a measure.

Staff-6: Bass clef, bass line with eighth and sixteenth notes.

Staff-4: Treble clef, piano accompaniment with chords and long notes.

Staff-5: Treble clef, piano accompaniment with eighth and sixteenth notes.

Staff-2: Treble clef, vocal line with notes and rests.

Staff-3: Treble clef, piano accompaniment with chords and notes.

46

Staff-1: Treble clef, guitar tablature with fret numbers and rhythmic notation. Includes a 7/8 time signature.

Staff-6: Bass clef, melodic line with a sharp sign on the second measure.

Staff-4: Treble clef, chordal accompaniment with large oval groupings.

Staff-5: Treble clef, melodic line.

Staff-2: Treble clef, melodic line.

Staff-3: Treble clef, melodic line with a triplet of eighth notes in the first measure.

49

Staff-1: Treble clef, guitar tablature with fret numbers and rhythmic notation. Includes a 7/8 time signature.

Staff-6: Bass clef, melodic line.

Staff-4: Treble clef, chordal accompaniment with large oval groupings.

Staff-5: Treble clef, melodic line.

Staff-2: Treble clef, melodic line.

Staff-3: Treble clef, melodic line.

52

Staff-1

Staff-6

Staff-4

Staff-5

Staff-2

Staff-3

55

Staff-1

Staff-6

Staff-4

Staff-5

Staff-2

Staff-3

58

Staff-1

Staff-6

Staff-4

Staff-5

Staff-2

Staff-3

61

Staff-1

Staff-6

Staff-4

Staff-5

Staff-2

Staff-3

64

Staff-1: Treble clef, 7/8 time signature, contains rhythmic notation with accents and slurs.

Staff-6: Bass clef, contains a melodic line with slurs.

Staff-4: Treble clef, contains block chords with slurs.

Staff-5: Treble clef, contains a melodic line with slurs.

Staff-2: Treble clef, contains a melodic line with slurs.

Staff-3: Treble clef, contains a bass line with slurs and a triplet of eighth notes.

67

Staff-1: Treble clef, 7/8 time signature, contains rhythmic notation with accents and slurs.

Staff-6: Bass clef, contains a melodic line with slurs.

Staff-4: Treble clef, contains block chords with slurs.

Staff-5: Treble clef, contains a melodic line with slurs.

Staff-2: Treble clef, contains a melodic line with slurs.

Staff-3: Treble clef, contains a bass line with slurs and a triplet of eighth notes.

70

Staff-1: Treble clef, 7/8 time signature, contains rhythmic notation with accents and slurs.

Staff-6: Bass clef, contains a melodic line with slurs and accidentals.

Staff-4: Treble clef, contains complex chordal structures with slurs and accidentals.

Staff-5: Treble clef, contains a melodic line with slurs.

Staff-2: Treble clef, contains a melodic line with slurs and accidentals.

Staff-3: Treble clef, contains a melodic line with a triplet of eighth notes and slurs.

73

Staff-1: Treble clef, 7/8 time signature, contains rhythmic notation with accents and slurs.

Staff-6: Bass clef, contains a melodic line with slurs.

Staff-4: Treble clef, contains complex chordal structures with slurs and accidentals.

Staff-5: Treble clef, contains a melodic line with slurs.

Staff-2: Treble clef, contains a melodic line with slurs and accidentals.

Staff-3: Treble clef, contains a melodic line with slurs and accidentals.

76

Staff-1: Treble clef, 7/8 time signature. Features a melodic line with eighth and sixteenth notes, including a triplet of eighth notes. Includes guitar-specific notation like 'x' for muted notes and '7' for a barre.

Staff-6: Bass clef. Features a bass line with eighth and sixteenth notes, including a triplet of eighth notes.

Staff-4: Treble clef. Features a complex accompaniment with chords and a triplet of eighth notes.

Staff-5: Treble clef. Features a complex accompaniment with chords and a triplet of eighth notes.

Staff-2: Treble clef. Features a complex accompaniment with chords and a triplet of eighth notes.

Staff-3: Treble clef. Features a complex accompaniment with chords and a triplet of eighth notes.

79

Staff-1: Treble clef, 7/8 time signature. Features a melodic line with eighth and sixteenth notes, including a triplet of eighth notes. Includes guitar-specific notation like 'x' for muted notes and '7' for a barre.

Staff-6: Bass clef. Features a bass line with eighth and sixteenth notes, including a triplet of eighth notes.

Staff-4: Treble clef. Features a complex accompaniment with chords and a triplet of eighth notes. Includes a tempo marking: ♩ = 102,000053.

Staff-5: Treble clef. Features a complex accompaniment with chords and a triplet of eighth notes. Includes a tempo marking: ♩ = 102,000053.

Staff-2: Treble clef. Features a complex accompaniment with chords and a triplet of eighth notes.

Staff-3: Treble clef. Features a complex accompaniment with chords and a triplet of eighth notes.

Staff-1

Staff-6

Staff-4

Staff-5

Staff-2

Staff-3

Staff-1

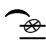
Staff-6

Staff-4

Staff-5

Staff-2

Staff-3

90 

Staff-1

Staff-6

Staff-5

Staff-2

Staff-3



94 $\text{♩} = 102,000053$ $\text{♩} = 101,000069$ $\text{♩} = 98,000060$ $\text{♩} = 80,000084$

Staff-4

Staff-5

Staff-2

Staff-3

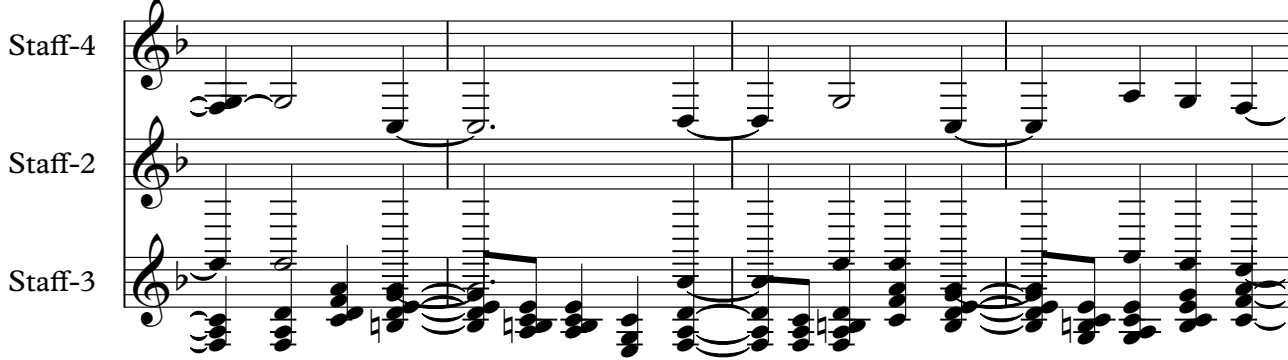


98

Staff-4

Staff-2

Staff-3



102

Staff-4

Staff-2

Staff-3

106

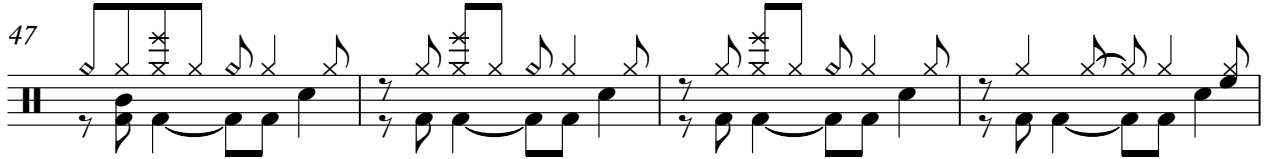
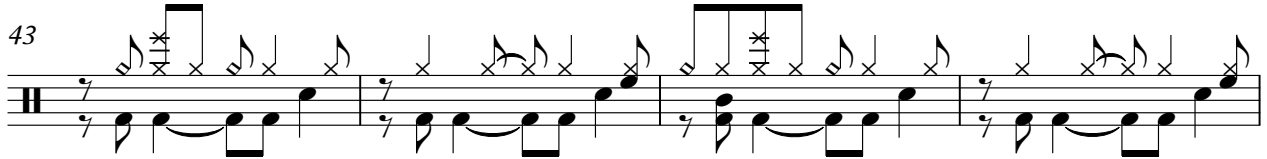
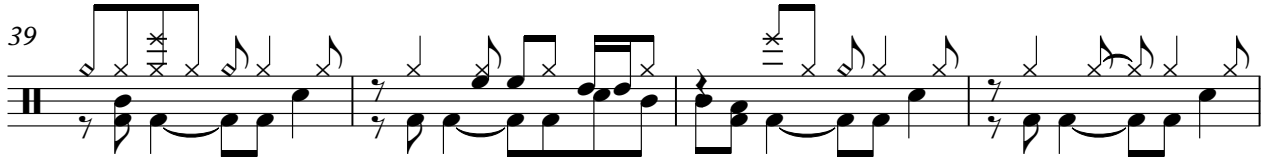
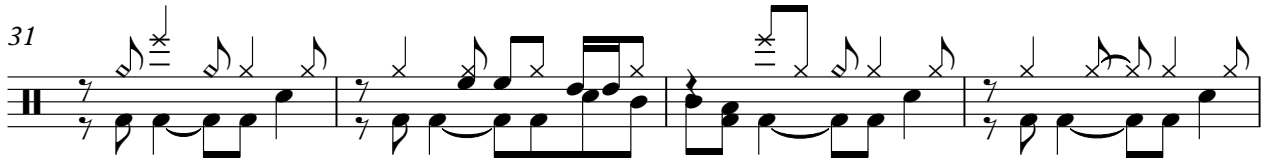
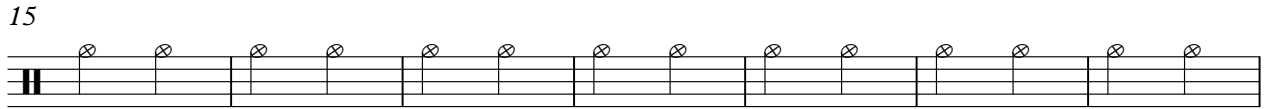
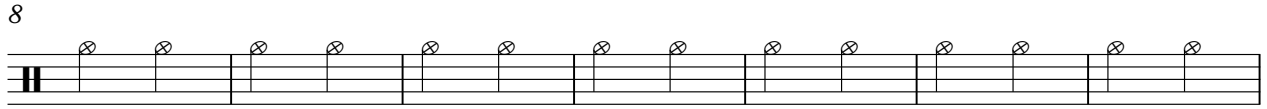
Staff-4

Staff-2

Staff-3

Dan Fogelberg - Same Old Lang Syne 3
Staff-1

♩ = 106,000137



Copyright © 1997 by Me!
All Rights Reserved

V.S.

2

Staff-1

51

55

59

63

67

71

75

79

♩ = 102,000053

86

91

♩ = 102,0000069

3 **14**

Dan Fogelberg - Same Old Lang Syne 3

Staff-6

♩ = 106,000137
40



44



50



57



62



67



72



78

♩ = 102,000053



85

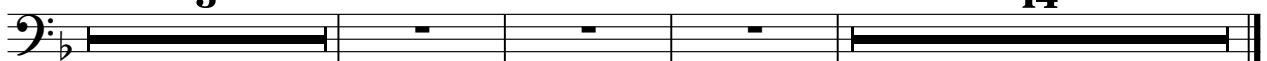


91

♩ = 102,000069

3

14



Copyright © 1997 by Me!
All Rights Reserved

Dan Fogelberg - Same Old Lang Syne 3

Staff-4

♩ = 106,000137

8

15

22

29

36

43

50

57

64

V.S.

Copyright © 1997 by Mel.
All Rights Reserved

71

77

♩ = 102,000053

84

4

94

♩ = 102,000053

101

105

2

Dan Fogelberg - Same Old Lang Syne 3
Staff-5

♩ = 106,000137

8

12

17

21

33

37

42

47

52

56

8

Copyright © 1997 by Me!
All Rights Reserved

V.S.

Dan Fogelberg - Same Old Lang Syne 3
Staff-2

♩ = 106,000137



6



11



17



22



27



33



38



43



49



Copyright © 1997 by Mel.
All Rights Reserved

V.S.

53

58

Detailed description: This block contains the first two staves of music. Staff 1 (measures 53-57) features a complex rhythmic pattern with many sixteenth notes and a triplet of eighth notes at the beginning. Staff 2 (measures 58-62) continues the melody with various note values and rests.

63

Detailed description: This block contains the third staff of music (measures 63-67). The melody continues with a mix of eighth and sixteenth notes, and some rests.

68

Detailed description: This block contains the fourth staff of music (measures 68-72). The melody continues with eighth and sixteenth notes.

73

77

Detailed description: This block contains the fifth and sixth staves of music. Staff 5 (measures 73-76) has a complex rhythmic pattern. Staff 6 (measures 77-81) includes a triplet of eighth notes and ends with a double bar line.

82

Detailed description: This block contains the seventh staff of music (measures 82-87). The melody continues with eighth and sixteenth notes.

88

Detailed description: This block contains the eighth staff of music (measures 88-93). The melody continues with eighth and sixteenth notes.

94

Detailed description: This block contains the ninth staff of music (measures 94-99). The melody continues with eighth and sixteenth notes.

100

Detailed description: This block contains the tenth staff of music (measures 100-104). The melody continues with eighth and sixteenth notes.

Detailed description: This block contains the eleventh staff of music (measures 105-109). The melody continues with eighth and sixteenth notes.

♩ = 102,00005

♩ = 102,00005,00006,00007,00008,00009

105

A musical staff in treble clef with a key signature of one flat (Bb). The staff contains guitar tablature and musical notation. The first four measures show individual notes on the staff with vertical lines below indicating fret positions. The fifth measure begins a sequence of six notes, each with a slur connecting it to the next note in the sequence. The notes are: G4 (2nd fret), F4 (1st fret), E4 (open), D4 (open), C4 (open), and B3 (open). The sequence ends with a double bar line.

Dan Fogelberg - Same Old Lang Syne 3
Staff-3

♩ = 106,000137

5

9

13

17

21

25

29

33

37

Copyright © 1997 by Me!
All Rights Reserved

V.S.

41

45

49

53

57

61

65

69

73

77

♩ = 102,000053

