

# Die Original Oberkrainer - Hochzeit Ohne Gaste

♩ = 165,002884

ELEC ORGAN

CHURCH ORG

♩ = 165,002884

ELEC ORGAN

5

ELEC ORGAN

8

ELEC ORGAN

11

ELEC ORGAN

CHURCH ORG

ELEC ORGAN

15

ELEC ORGAN

CHURCH ORG

ELEC ORGAN

18

ELEC ORGAN

CHURCH ORG

ELEC ORGAN

21

ELEC ORGAN

CHURCH ORG

ELEC ORGAN

24

ELEC ORGAN

CHURCH ORG

ELEC ORGAN

27

ELEC ORGAN

CHURCH ORG

ELEC ORGAN

30

ELEC ORGAN

CHURCH ORG

ELEC ORGAN

33

ELEC ORGAN

CHURCH ORG

ELEC ORGAN

37

ELEC ORGAN

CHURCH ORG

ELEC ORGAN

40

ELEC ORGAN

CHURCH ORG

ELEC ORGAN

44

ELEC ORGAN

CHURCH ORG

ELEC ORGAN

47

ELEC ORGAN

CHURCH ORG

ELEC ORGAN

51

ELEC ORGAN

CHURCH ORG

ELEC ORGAN

55

ELEC ORGAN

CHURCH ORG

ELEC ORGAN

59

ELEC ORGAN

CHURCH ORG

ELEC ORGAN

62

ELEC ORGAN

CHURCH ORG

ELEC ORGAN

ELEC ORGAN

CHURCH ORG

ELEC ORGAN

63

ELEC ORGAN

CHURCH ORG

ELEC ORGAN

64

ELEC ORGAN

CHURCH ORG

ELEC ORGAN

65

ELEC ORGAN

CHURCH ORG

ELEC ORGAN

66

67

ELEC ORGAN

CHURCH ORG

ELEC ORGAN

68

ELEC ORGAN

CHURCH ORG

ELEC ORGAN

69

ELEC ORGAN

CHURCH ORG

ELEC ORGAN

70


ELEC ORGAN

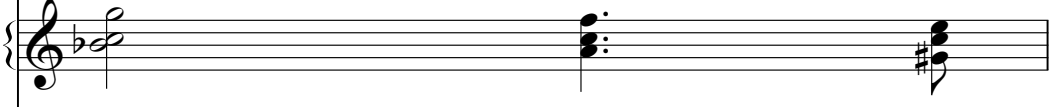
CHURCH ORG

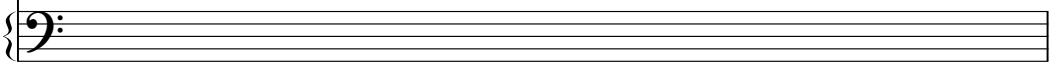
ELEC ORGAN




71


ELEC ORGAN { 

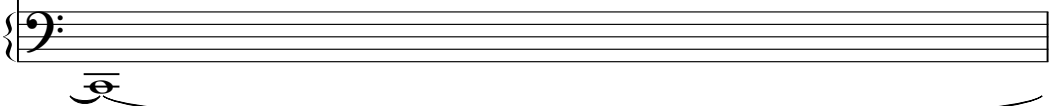
CHURCH ORG { 

ELEC ORGAN { 


72


ELEC ORGAN { 

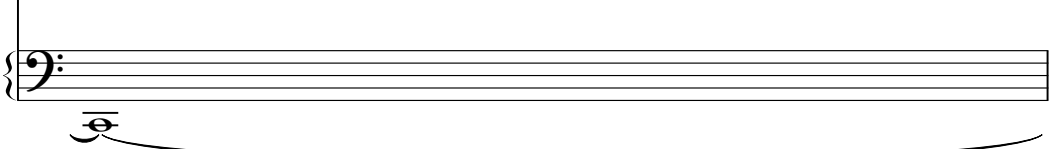
CHURCH ORG { 

ELEC ORGAN { 


73

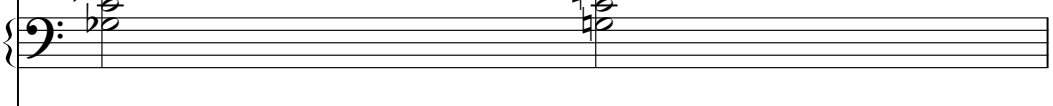
ELEC ORGAN { 

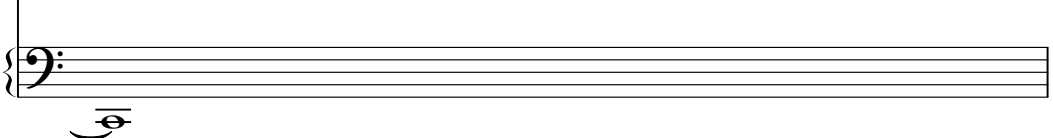
CHURCH ORG { 

ELEC ORGAN { 

74

ELEC ORGAN { 

CHURCH ORG { 

ELEC ORGAN { 

75

ELEC ORGAN

CHURCH ORG

ELEC ORGAN

76

ELEC ORGAN

CHURCH ORG

ELEC ORGAN

77

ELEC ORGAN

CHURCH ORG

ELEC ORGAN

78

ELEC ORGAN

CHURCH ORG

ELEC ORGAN

79

ELEC ORGAN

CHURCH ORG

ELEC ORGAN

80

ELEC ORGAN

CHURCH ORG

ELEC ORGAN

81

ELEC ORGAN

CHURCH ORG

ELEC ORGAN

82

ELEC ORGAN

CHURCH ORG

ELEC ORGAN

83

ELEC ORGAN

CHURCH ORG

84

ELEC ORGAN

CHURCH ORG

85

ELEC ORGAN

CHURCH ORG

86

ELEC ORGAN

CHURCH ORG

ELEC ORGAN

ELEC ORGAN

88

CHURCH ORG

ELEC ORGAN

♩ = 165,002884

6

10

15

19

23

27

32

37

41

46

51

56

61

63

64

ELEC ORGAN

Musical score for ELEC ORGAN, page 3, measures 65-82. The score is written in treble clef with a key signature of one flat (Bb). The piece features a variety of rhythmic patterns and articulations.

- Measure 65:** A continuous eighth-note pattern. The first six notes are grouped with a '6' (sixteenth notes), and the following four groups of three notes are marked with '3' (triplets).
- Measure 66:** Continues the eighth-note pattern with triplets, followed by a quarter rest and a dotted quarter note.
- Measure 69:** A grand staff system. The treble clef contains a dotted quarter note, a quarter rest, and a quarter note. The bass clef contains a half note chord, a quarter note, and a half note chord.
- Measure 71:** A continuous eighth-note pattern with groups of six and three notes.
- Measure 72:** A continuous eighth-note pattern with groups of three and six notes.
- Measure 73:** A continuous eighth-note pattern with groups of three and six notes.
- Measure 74:** A continuous eighth-note pattern with groups of six, triplet three, triplet three, six, and triplet three notes, followed by a quarter rest and a dotted quarter note.
- Measure 77:** A grand staff system. The treble clef contains a dotted quarter note, a quarter note, and a quarter note. The bass clef contains a half note chord, a quarter rest, and a half note chord.
- Measure 82:** A grand staff system. The treble clef contains a dotted quarter note, a quarter rest, and a quarter note. The bass clef contains a half note chord, a quarter rest, and a half note chord.

V.S.





♩ = 165,002884

5

11

17

22

28

33

39

45

51

58

62

67

69

71

75

77

79

81

CHURCH ORG

83

Musical notation for measures 83 and 84. Measure 83 contains a triplet of eighth notes and a triplet of sixteenth notes. Measure 84 contains a triplet of eighth notes and a triplet of sixteenth notes. The piece concludes with a final triplet of sixteenth notes.

85

Musical notation for measures 85 and 86. Measure 85 features a sextuplet of eighth notes followed by four triplets of eighth notes. Measure 86 contains a triplet of eighth notes, a triplet of sixteenth notes, and a triplet of eighth notes.

87

Musical notation for measures 87 through 90. Measures 87 and 88 are in treble clef, while measures 89 and 90 are in bass clef. Measures 87 and 88 contain eighth notes and rests. Measures 89 and 90 feature sustained chords with a fermata, each marked with a '2' above and below the staff.

♩ = 165,002884

5

5

11

17

23

30

36

42

49

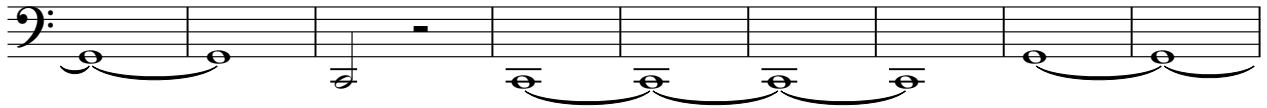
55

V.S.

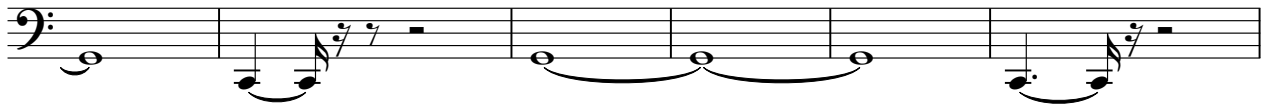
61



68



77



83

