

Die Prinzen - Mann Im Mond

♩ = 126,000130

CHOIR AAHS

MELODY

♩ = 126,000130

3

DRUMS

BASS

ACOU BASS

CHOIR AAHS

MELODY

5

DRUMS

BASS

ACOU BASS

CHOIR AAHS

MELODY

Detailed description: This system contains measures 5 and 6. The drums part features a consistent hi-hat pattern of eighth notes and a bass drum pattern of quarter notes. The bass and acoustic bass parts play a similar rhythmic line of quarter notes. The choir part consists of sustained chords and a melodic line. The melody part features a sequence of eighth notes followed by a half note.

7

DRUMS

BASS

ACOU BASS

CHOIR AAHS

MELODY

Detailed description: This system contains measures 7 and 8. The drums part continues with the same hi-hat and bass drum patterns. The bass and acoustic bass parts play a rhythmic line of quarter notes. The choir part features a melodic line and sustained chords. The melody part continues with eighth notes and quarter notes.

9

DRUMS

BASS

ACOU BASS

CHOIR AAHS

MELODY

11

DRUMS

BASS

ACOU BASS

CHOIR AAHS

MELODY

13

DRUMS

BASS

ACOU BASS

CHOIR AAHS

MELODY

Detailed description: This system contains measures 13 and 14. The DRUMS part features a consistent pattern of eighth notes with 'x' marks above them, indicating cymbal hits. The BASS and ACOU BASS parts play a similar rhythmic pattern of eighth notes. The CHOIR AAHS part consists of block chords. The MELODY part features a rhythmic pattern of eighth notes with accents.

15

DRUMS

BASS

ACOU BASS

CHOIR AAHS

MELODY

Detailed description: This system contains measures 15 and 16. The DRUMS part continues with the same eighth-note pattern. The BASS and ACOU BASS parts continue with their respective eighth-note patterns. The CHOIR AAHS part has a more complex arrangement with some chords containing accidentals. The MELODY part continues with its eighth-note pattern, ending with a half note in measure 16.

17

DRUMS

BASS

ACOU BASS

CHOIR AAHS

MELODY

Detailed description: This system of music covers measures 17 and 18. The DRUMS part features a consistent pattern of eighth notes with 'x' marks above them, and a bass drum line with upward-pointing triangles. The BASS part is in treble clef, showing a sequence of notes including a dotted quarter note, an eighth note, and a quarter note. The ACOU BASS part is in bass clef, mirroring the bass line with a dotted quarter note, an eighth note, and a quarter note. The CHOIR AAHS part consists of block chords in treble clef. The MELODY part is in treble clef, featuring a rhythmic pattern of eighth notes with accents.

19

DRUMS

BASS

ACOU BASS

CHOIR AAHS

MELODY

Detailed description: This system of music covers measures 19 and 20. The DRUMS part continues with the same eighth-note pattern and bass drum line. The BASS part in treble clef shows a progression of notes, including a dotted quarter note, an eighth note, and a quarter note, ending with a flat. The ACOU BASS part in bass clef follows a similar pattern to the bass line. The CHOIR AAHS part shows block chords in treble clef, with a change in the final chord. The MELODY part in treble clef continues with eighth notes and accents, ending with a flat.

21

DRUMS

BASS

ACOU BASS

CHOIR AAHS

MELODY

23

DRUMS

BASS

ACOU BASS

CHOIR AAHS

MELODY

25

DRUMS

BASS

ACOU BASS

CHOIR AAHS

MELODY

Detailed description: This system contains measures 25 and 26. The DRUMS part features a consistent pattern of eighth notes with 'x' marks above them, indicating cymbal hits. The BASS and ACOU BASS parts play a similar rhythmic pattern of eighth notes. The CHOIR AAHS part consists of sustained chords and melodic lines. The MELODY part is a simple line of eighth notes.

27

DRUMS

BASS

ACOU BASS

CHOIR AAHS

MELODY

Detailed description: This system contains measures 27 and 28. The DRUMS part continues with the same eighth-note pattern. The BASS and ACOU BASS parts have a more varied rhythmic pattern, including some quarter notes and eighth notes. The CHOIR AAHS part features more complex chordal textures and melodic movement. The MELODY part continues with eighth notes, including some rests.

29

DRUMS

BASS

ACOU BASS

CHOIR AAHS

MELODY

31

DRUMS

BASS

ACOU BASS

CHOIR AAHS

MELODY

33

DRUMS

BASS

ACOU BASS

CHOIR AAHS

PIZZICATO

35

DRUMS

BASS

ACOU BASS

CHOIR AAHS

PIZZICATO

37

DRUMS

BASS

ACOU BASS

CHOIR AAHS

PIZZICATO

MELODY

Detailed description: This system of musical notation covers measures 37 and 38. The DRUMS part features a consistent rhythmic pattern of eighth notes with 'x' marks above them, indicating cymbal hits. The BASS and ACOU BASS parts play a simple, steady line of quarter notes. The CHOIR AAHS part consists of sustained chords and some melodic movement. The PIZZICATO part has a few chords in the first measure before remaining silent. The MELODY part is mostly silent in the first measure and then plays a sequence of quarter notes in the second measure.

39

DRUMS

BASS

ACOU BASS

CHOIR AAHS

MELODY

Detailed description: This system of musical notation covers measures 39 and 40. The DRUMS part continues with the same eighth-note pattern. The BASS and ACOU BASS parts continue their quarter-note line, with a sharp sign appearing in the second measure of both parts. The CHOIR AAHS part has sustained chords and some melodic movement. The MELODY part plays a sequence of quarter notes throughout both measures.

41

DRUMS

BASS

ACOU BASS

CHOIR AAHS

PIZZICATO

MELODY

Detailed description: This system covers measures 41 and 42. The DRUMS part features a consistent pattern of eighth notes with 'x' marks above them, indicating a specific drum sound. The BASS and ACOU BASS parts play a similar melodic line, starting with a half note and followed by quarter notes. The CHOIR AAHS part has a sustained chord in measure 41 and a melodic line in measure 42. The PIZZICATO part is mostly silent, with some chords in measure 42. The MELODY part is mostly silent, with a single note in measure 42.

43

DRUMS

BASS

ACOU BASS

CHOIR AAHS

PIZZICATO

MELODY

Detailed description: This system covers measures 43 and 44. The DRUMS part continues with the same eighth-note pattern. The BASS and ACOU BASS parts play a more active melodic line with eighth notes. The CHOIR AAHS part has a sustained chord in measure 43 and a melodic line in measure 44. The PIZZICATO part plays a rhythmic pattern of eighth notes with chords. The MELODY part plays a simple melodic line in measure 43 and is silent in measure 44.

45

DRUMS

BASS

ACOU BASS

CHOIR AAHS

PIZZICATO

MELODY

Detailed description: This system of musical notation covers measures 45 and 46. The DRUMS part features a consistent rhythmic pattern of eighth notes with 'x' marks above them, indicating cymbal hits. The BASS and ACOU BASS parts play a melodic line with notes such as G2, F2, E2, D2, C2, B1, A1, and G1. The CHOIR AAHS part consists of sustained chords in the treble clef. The PIZZICATO part shows a sequence of chords, including triads and dyads, with some notes marked with 'z' for pizzicato. The MELODY part has a simple line with a slur under the first two notes.

47

DRUMS

BASS

ACOU BASS

CHOIR AAHS

PIZZICATO

MELODY

Detailed description: This system of musical notation covers measures 47 and 48. The DRUMS part continues with the same eighth-note pattern. The BASS and ACOU BASS parts continue with the same melodic line. The CHOIR AAHS part has chords with a sharp sign (#) above them. The PIZZICATO part continues with its sequence of chords. The MELODY part has a few notes in measure 47, followed by a rest in measure 48, and then a few notes in measure 49.

49

DRUMS

BASS

ACOU BASS

CHOIR AAHS

PIZZICATO

MELODY

Detailed description: This system of musical notation covers measures 49 and 50. The DRUMS part features a complex, multi-layered rhythmic pattern with numerous 'x' marks above the staff, indicating cymbal or snare hits. The BASS and ACOU BASS parts play a steady eighth-note line. The CHOIR AAHS part consists of sustained chords. The PIZZICATO part has a few initial chords before becoming silent. The MELODY part features a sequence of eighth notes.

51

DRUMS

BASS

ACOU BASS

CHOIR AAHS

MELODY

Detailed description: This system of musical notation covers measures 51 and 52. The DRUMS part continues with its complex rhythmic pattern. The BASS and ACOU BASS parts continue with their eighth-note lines. The CHOIR AAHS part has a long, sustained chord in the second measure. The MELODY part continues with its eighth-note sequence.

53

DRUMS

BASS

ACOU BASS

CHOIR AAHS

MELODY

55

DRUMS

BASS

ACOU BASS

CHOIR AAHS

MELODY

57

DRUMS

BASS

ACOU BASS

CHOIR AAHS

MELODY

59

DRUMS

BASS

ACOU BASS

CHOIR AAHS

MELODY

61

DRUMS

BASS

ACOU BASS

CHOIR AAHS

MELODY

63

DRUMS

BASS

ACOU BASS

CHOIR AAHS

MELODY

65

DRUMS

BASS

ACOU BASS

CHOIR AAHS

MELODY

Detailed description: This system contains measures 65 through 68. The DRUMS part features a consistent pattern of eighth notes with 'x' marks above them, indicating cymbal hits. The BASS and ACOU BASS parts play a similar rhythmic pattern of eighth notes. The CHOIR AAHS part consists of sustained chords, with a key signature change to one sharp (F#) occurring in measure 67. The MELODY part is a simple line of eighth notes.

67

DRUMS

BASS

ACOU BASS

CHOIR AAHS

MELODY

Detailed description: This system contains measures 69 through 72. The DRUMS part continues with the eighth-note pattern. The BASS and ACOU BASS parts continue with their eighth-note line. The CHOIR AAHS part features a long, sustained chord in measure 69, followed by a melodic line in measure 70, and then returns to sustained chords in measures 71 and 72. The MELODY part continues with its eighth-note line.

69

DRUMS

BASS

ACOU BASS

CHOIR AAHS

MELODY

71

DRUMS

BASS

ACOU BASS

CHOIR AAHS

PIZZICATO

73

DRUMS

BASS

ACOU BASS

CHOIR AAHS

PIZZICATO

Detailed description: This system contains measures 73 and 74. The DRUMS part features a consistent rhythmic pattern of eighth notes with 'x' marks above them, indicating cymbal hits. The BASS and ACOU BASS parts play a similar eighth-note pattern. The CHOIR AAHS part has a sustained chord in measure 73 and a different chord in measure 74. The PIZZICATO part consists of eighth-note chords with a rhythmic pattern of eighth notes and rests.

75

DRUMS

BASS

ACOU BASS

CHOIR AAHS

PIZZICATO

MELODY

Detailed description: This system contains measures 75 and 76. The DRUMS part continues with the eighth-note pattern. The BASS and ACOU BASS parts continue with their eighth-note pattern. The CHOIR AAHS part has a melodic line in measure 75 and a sustained chord in measure 76. The PIZZICATO part continues with eighth-note chords. The MELODY part is silent in measure 75 and has a simple melodic line in measure 76.

77

DRUMS

BASS

ACOU BASS

CHOIR AAHS

MELODY

Detailed description: This system of music covers measures 77 and 78. The DRUMS part features a consistent pattern of eighth notes with 'x' marks above them, indicating cymbal hits. The BASS and ACOU BASS parts play a similar rhythmic pattern of eighth notes, with the acoustic bass line including some grace notes. The CHOIR AAHS part consists of sustained chords and melodic lines. The MELODY part is a simple line of eighth notes.

79

DRUMS

BASS

ACOU BASS

CHOIR AAHS

MELODY

Detailed description: This system of music covers measures 79 and 80. The DRUMS part continues with the same eighth-note pattern. The BASS and ACOU BASS parts have a more varied rhythmic pattern, including some quarter notes and eighth notes with grace notes. The CHOIR AAHS part features more complex chordal textures and melodic movement. The MELODY part continues with eighth notes, including some grace notes.

81

DRUMS

BASS

ACOU BASS

CHOIR AAHS

MELODY

83

DRUMS

BASS

ACOU BASS

CHOIR AAHS

MELODY

DRUMS

BASS

ACOU BASS

CHOIR AAHS

MELODY

88

CHOIR AAHS

MELODY

92

DRUMS

BASS

ACOU BASS

CHOIR AAHS

MELODY

95

DRUMS

BASS

ACOU BASS

CHOIR AAHS

MELODY

97

DRUMS

BASS

ACOU BASS

CHOIR AAHS

MELODY

99

DRUMS

BASS

ACOU BASS

CHOIR AAHS

MELODY

101

DRUMS

BASS

ACOU BASS

CHOIR AAHS

MELODY

105

DRUMS

BASS

ACOU BASS

CHOIR AAHS

PIZZICATO

MELODY

112

DRUMS

Die Prinzen - Mann Im Mond

DRUMS

♩ = 126,000130
2

5

7

9

11

13

15

17

19

21

V.S.

DRUMS

23

25

27

29

31

33

35

37

39

41

DRUMS

43

45

47

49

51

53

55

57

59

61

V.S.

63

Drum notation for measures 63-64. The top staff shows a continuous eighth-note hi-hat pattern. The bottom staff shows a bass drum pattern with a kick drum on the first beat of each measure and a snare drum on the second and fourth beats.

65

Drum notation for measures 65-66. The top staff shows a continuous eighth-note hi-hat pattern. The bottom staff shows a bass drum pattern with a kick drum on the first beat of each measure and a snare drum on the second and fourth beats.

67

Drum notation for measures 67-68. The top staff shows a continuous eighth-note hi-hat pattern. The bottom staff shows a bass drum pattern with a kick drum on the first beat of each measure and a snare drum on the second and fourth beats.

69

Drum notation for measures 69-70. The top staff shows a continuous eighth-note hi-hat pattern. The bottom staff shows a bass drum pattern with a kick drum on the first beat of each measure and a snare drum on the second and fourth beats.

71

Drum notation for measures 71-72. The top staff shows a continuous eighth-note hi-hat pattern. The bottom staff shows a bass drum pattern with a kick drum on the first beat of each measure and a snare drum on the second and fourth beats.

73

Drum notation for measures 73-74. The top staff shows a continuous eighth-note hi-hat pattern. The bottom staff shows a bass drum pattern with a kick drum on the first beat of each measure and a snare drum on the second and fourth beats.

75

Drum notation for measures 75-76. The top staff shows a continuous eighth-note hi-hat pattern. The bottom staff shows a bass drum pattern with a kick drum on the first beat of each measure and a snare drum on the second and fourth beats.

77

Drum notation for measures 77-78. The top staff shows a continuous eighth-note hi-hat pattern. The bottom staff shows a bass drum pattern with a kick drum on the first beat of each measure and a snare drum on the second and fourth beats.

79

Drum notation for measures 79-80. The top staff shows a continuous eighth-note hi-hat pattern. The bottom staff shows a bass drum pattern with a kick drum on the first beat of each measure and a snare drum on the second and fourth beats.

81

Drum notation for measures 81-82. The top staff shows a continuous eighth-note hi-hat pattern. The bottom staff shows a bass drum pattern with a kick drum on the first beat of each measure and a snare drum on the second and fourth beats.

DRUMS

83

Musical notation for drum set at measure 83. The top staff shows a continuous pattern of eighth notes marked with 'x' (cymbals). The bottom staff shows a bass drum pattern with eighth notes and a dotted quarter note.

86

8

Musical notation for drum set at measure 86. A large '8' is written above the first measure. The top staff shows a continuous pattern of eighth notes marked with 'x' (cymbals). The bottom staff shows a bass drum pattern with eighth notes.

96

Musical notation for drum set at measure 96. The top staff shows a continuous pattern of eighth notes marked with 'x' (cymbals). The bottom staff shows a bass drum pattern with eighth notes.

98

Musical notation for drum set at measure 98. The top staff shows a continuous pattern of eighth notes marked with 'x' (cymbals). The bottom staff shows a bass drum pattern with eighth notes.

100

Musical notation for drum set at measure 100. The top staff shows a continuous pattern of eighth notes marked with 'x' (cymbals). The bottom staff shows a bass drum pattern with eighth notes and a final half note.

104

Musical notation for drum set at measure 104. The top staff is empty. The bottom staff shows a series of half notes with a slur underneath.

111

Musical notation for drum set at measure 111. The top staff is empty. The bottom staff shows a series of half notes with a slur underneath.

Die Prinzen - Mann Im Mond

BASS

♩ = 126,000130

2

7

12

16

21

26

31

36

41

46

Detailed description: The image shows a musical score for the bass part of the song 'Mann Im Mond' by Die Prinzen. The score is written in 4/4 time and consists of ten staves of music. The tempo is marked as ♩ = 126,000130. The first staff begins with a measure number '2' and a double bar line. The notation includes various rhythmic values such as eighth and sixteenth notes, rests, and slurs. The key signature is not explicitly shown but appears to be C major or F major based on the notes. The staves are numbered 2, 7, 12, 16, 21, 26, 31, 36, 41, and 46, indicating the starting measure of each line.

V.S.

51



56



61



65



70



75



80



85



96



101



♩ = 126,000130

2



V.S.

♩ = 126,000130

6

11

16

22

26

31

36

41

47

53

58

63

68

74

80

85

90

95

100

13

PIZZICATO

Die Prinzen - Mann Im Mond

♩ = 126,000130

32

35

38

44

46

49

73

75

22

29

13

MELODY

Die Prinzen - Mann Im Mond

♩ = 126,000130

6

10

14

18

22

27

30

4

37



43



48



52



56



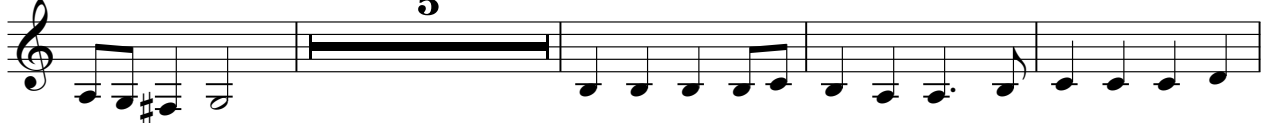
60



65



70



79



85



MELODY

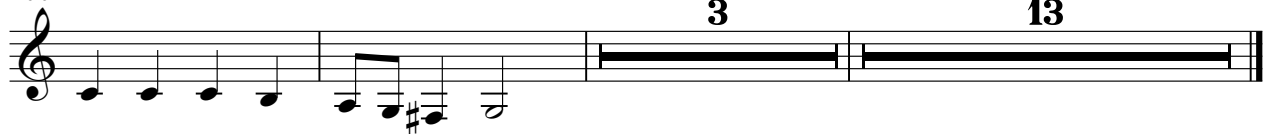
90



96



100



3

13