

Diversen Kerst Muziek Traditional - The Little Drumme

$\text{♩} = 116,001656$

This system contains the first four measures of the piece. The instruments and their parts are:

- Flute:** Treble clef, 4/4 time, rests in all four measures.
- Harmonica:** Treble clef, 4/4 time, rests in all four measures.
- Baroque Trumpet:** Treble clef, 4/4 time, rests in all four measures.
- Percussion:** Percussion clef, 4/4 time. Measures 1-3 are rests. Measure 4 contains a rhythmic pattern of eighth notes: quarter, eighth, eighth, quarter, eighth, eighth, quarter, eighth, eighth, quarter.
- Acoustic Bass:** Bass clef, 4/4 time. Measures 1-3 are rests. Measure 4 contains a half note.
- Solo (Guitar):** Treble clef, 4/4 time. Measures 1-3 are rests. Measure 4 contains a chord.
- Solo (Bass):** Treble clef, 4/4 time. Measures 1-3 are rests. Measure 4 contains a chord.

5

This system contains measures 5 through 8. The instruments and their parts are:

- Harm.:** Treble clef, 4/4 time. Measure 5 is a rest. Measure 6 contains a dotted half note. Measure 7 contains a half note. Measure 8 contains a quarter note.
- Perc.:** Percussion clef, 4/4 time. Measures 5-8 contain a continuous rhythmic pattern of eighth notes: quarter, eighth, eighth, quarter, eighth, eighth, quarter, eighth, eighth, quarter. A triplet of eighth notes is marked in measure 8.
- A. Bass:** Bass clef, 4/4 time. Measures 5-8 contain a steady bass line of quarter notes.
- Solo (Guitar):** Treble clef, 4/4 time. Measures 5-8 contain a series of chords.
- Solo (Bass):** Treble clef, 4/4 time. Measures 5-8 contain a series of chords.

7

Harm.

Perc.

A. Bass

Solo

Solo

9

Harm.

Perc.

A. Bass

Solo

Solo

11

Harm.

Perc.

A. Bass

Solo

Solo

13

Harm.

Perc.

A. Bass

Solo

Solo

15

Harm.

Perc.

A. Bass

Solo

Solo

Detailed description: This system contains measures 15 and 16. The Harm. part (top staff) features a melodic line with quarter notes and a half note, including a flat. The Perc. part (second staff) has a rhythmic pattern of eighth notes with triplet markings. The A. Bass part (third staff) consists of quarter notes. The Solo part (fourth staff) shows a guitar-like accompaniment with chords and a melodic line. The bottom Solo part (fifth staff) shows a bass line with a long note and a triplet.

17

Harm.

Perc.

A. Bass

Solo

Solo

Detailed description: This system contains measures 17 and 18. The Harm. part (top staff) has a melodic line with a flat. The Perc. part (second staff) continues the rhythmic pattern with triplet markings. The A. Bass part (third staff) consists of quarter notes. The Solo part (fourth staff) shows a guitar-like accompaniment with chords. The bottom Solo part (fifth staff) shows a bass line with a triplet and a flat.

19

Harm.

Perc.

A. Bass

Solo

Solo

21

Harm.

Perc.

A. Bass

Solo

Solo

23

Harm.

Perc.

A. Bass

Solo

Solo

25

Harm.

Perc.

A. Bass

Solo

Solo

27

Harm.

Perc.

A. Bass

Solo

Solo

Detailed description: This system contains measures 27 through 30. The Harm. part starts with a half note G4, followed by a quarter rest, then eighth notes A4, B4, and C5, ending with a half note B4. The Perc. part features a steady eighth-note pattern with a triplet of eighth notes in measure 29. The A. Bass part has quarter notes G2, F2, E2, and D2. The Solo parts show guitar fretboard diagrams for measures 27-28 and chord diagrams for measures 29-30.

29

Harm.

Bar. Tpt.

Perc.

A. Bass

Solo

Solo

Detailed description: This system contains measures 29 through 32. The Harm. part is silent. The Bar. Tpt. part has a half note G4 in measure 29, a quarter rest in measure 30, and a half note G4 in measure 31. The Perc. part continues with eighth notes and a triplet in measure 30. The A. Bass part has quarter notes G2, F2, E2, and D2. The Solo parts show guitar fretboard diagrams for measures 29-30 and chord diagrams for measures 31-32.

31

Fl. Bar. Tpt. Perc. A. Bass Solo Solo

Detailed description: This system of music covers measures 31 and 32. The Flute part (Fl.) is mostly silent, with a few notes in measure 32. The Baritone Trumpet (Bar. Tpt.) plays a series of chords and notes, ending with a long note in measure 32. The Percussion (Perc.) part features a complex rhythmic pattern of eighth notes with triplets in measures 31 and 32. The Alto Bass (A. Bass) part consists of a simple bass line with quarter notes. The two Solo parts (Solo) are mostly silent, with some notes in measure 32.

33

Fl. Bar. Tpt. Perc. A. Bass Solo Solo

Detailed description: This system of music covers measures 33 and 34. The Flute part (Fl.) has a melodic line with sixteenth notes and rests, with a '6' marking under the first two measures. The Baritone Trumpet (Bar. Tpt.) part is mostly silent, with a few notes in measure 34. The Percussion (Perc.) part continues with a rhythmic pattern of eighth notes. The Alto Bass (A. Bass) part has a simple bass line with quarter notes. The two Solo parts (Solo) are mostly silent, with some notes in measure 34.

34

Bar. Tpt.

Perc.

A. Bass

Solo

Solo

36

Fl.

Bar. Tpt.

Perc.

A. Bass

Solo

Solo

37

Fl.

Bar. Tpt.

Perc.

A. Bass

Solo

Solo

38

Fl.

Bar. Tpt.

Perc.

A. Bass

Solo

Solo

40 11

Fl.

Bar. Tpt.

Perc.

A. Bass

Solo

Solo

41

Fl.

Bar. Tpt.

Perc.

A. Bass

Solo

Solo

42

Fl.

Bar. Tpt.

Perc.

A. Bass

Solo

Solo

44

Fl.

Bar. Tpt.

Perc.

A. Bass

Solo

Solo

45

Fl.

Bar. Tpt.

Perc.

A. Bass

Solo

Solo

Detailed description: This system of music covers measures 45 and 46. The Flute part (Fl.) features a complex melodic line with many beamed eighth notes and sixteenth notes. The Baritone Trombone part (Bar. Tpt.) has a few notes in measure 45 and a whole note in measure 46. The Percussion part (Perc.) plays a steady eighth-note pattern with a triplet of eighth notes in measure 46. The Alto Bass part (A. Bass) has a few notes in measure 45 and a whole note in measure 46. The two Solo parts are mostly silent, with some chordal accompaniment in measure 45 and a whole note in measure 46.

47

Fl.

Bar. Tpt.

Perc.

A. Bass

Solo

Solo

Detailed description: This system of music covers measures 47 and 48. The Flute part (Fl.) has a melodic line with several triplet markings over groups of eighth notes. The Baritone Trombone part (Bar. Tpt.) is mostly silent. The Percussion part (Perc.) continues with an eighth-note pattern and includes triplet markings. The Alto Bass part (A. Bass) has a few notes in measure 47 and a whole note in measure 48. The two Solo parts are mostly silent, with some chordal accompaniment in measure 47 and a whole note in measure 48.

48

Fl.

Bar. Tpt.

Perc.

A. Bass

Solo

Solo

50

Fl.

Bar. Tpt.

Perc.

A. Bass

Solo

Solo

52

Fl.

Bar. Tpt.

Perc.

A. Bass

Solo

Solo

5167

Detailed description: This is a page of a musical score, page 15, starting at measure 52. The score is arranged in a system with six staves. The top staff is for Flute (Fl.) in treble clef, showing a melodic line with a slur and a fermata. The second staff is for Baritone Trumpet (Bar. Tpt.) in treble clef, with a similar melodic line and a fermata. The third staff is for Percussion (Perc.) in a drum set notation, featuring a complex rhythmic pattern with a triplet of eighth notes. The fourth staff is for Acoustic Bass (A. Bass) in bass clef, with a simple bass line. The fifth staff is labeled 'Solo' and contains four vertical bar lines, indicating a solo section. The sixth staff is also labeled 'Solo' and contains a melodic line with a slur and a fermata. The page number '15' is in the top right corner, and the measure number '52' is at the start of the first staff. A large number '5167' is printed at the top right, overlapping the staff lines.

Diversen Kerst Muziek Traditional - The Little Drumme

Flute

♩ = 116,001656

31

33

6 6

2

37

3 3 3 3 3

39

41

6 6

43

46

3 3 3

49

51

37

The image shows a musical score for a flute part in 4/4 time. The tempo is marked as ♩ = 116,001656. The score consists of nine staves of music. The first staff starts with a whole rest for 31 measures. The second staff begins at measure 33 with a sixteenth-note pattern, followed by two six-measure rests. The third staff continues with a sixteenth-note pattern, including five triplet markings. The fourth staff shows a melodic line with a flat sign. The fifth staff has another six-measure rest. The sixth staff continues the melodic line with a flat sign. The seventh staff features a triplet of eighth notes. The eighth staff continues the melodic line. The ninth staff concludes the piece with a final melodic phrase and a double bar line. A measure number '37' is written at the end of the final staff.

Baroque Trumpet

Diversen Kerst Muziek Traditional - The Little Drumme

♩ = 116,001656

29



34



40



45



50



Diversen Kerst Muziek Traditional - The Little Drumme

Percussion

♩ = 116,001656

3

6

9

12

14

17

20

23

26

29

V.S.

Percussion

31

Musical staff for measure 31, featuring a series of eighth notes with triplets indicated by a bracket and the number 3.

33

Musical staff for measure 33, featuring a series of eighth notes with triplets indicated by a bracket and the number 3.

35

Musical staff for measure 35, featuring a series of eighth notes with triplets indicated by a bracket and the number 3.

37

Musical staff for measure 37, featuring a series of eighth notes with triplets indicated by a bracket and the number 3.

39

Musical staff for measure 39, featuring a series of eighth notes with triplets indicated by a bracket and the number 3.

41

Musical staff for measure 41, featuring a series of eighth notes with triplets indicated by a bracket and the number 3.

43

Musical staff for measure 43, featuring a series of eighth notes with triplets indicated by a bracket and the number 3.

45

Musical staff for measure 45, featuring a series of eighth notes with triplets indicated by a bracket and the number 3.

47

Musical staff for measure 47, featuring a series of eighth notes with triplets indicated by a bracket and the number 3.

49

Musical staff for measure 49, featuring a series of eighth notes with triplets indicated by a bracket and the number 3.

Percussion

51

Musical notation for Percussion, measure 51. The staff shows a series of eighth notes with stems pointing down, grouped into pairs. A triplet of eighth notes is marked with a '3' above it. The measure ends with a double bar line.

53

Musical notation for Percussion, measure 53. The staff shows a series of eighth notes with stems pointing down, grouped into pairs. The measure ends with a double bar line.

Acoustic Bass

Diversen Kerst Muziek Traditional - The Little Drumme

♩ = 116,001656

3



9



16



23



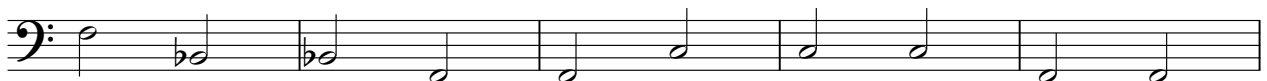
30



37



44



49

1831046



Diversen Kerst Muziek Traditional - The Little Drumme

Solo

♩ = 116,001656

3

9

16

23

30

37

44

49

831046

Diversen Kerst Muziek Traditional - The Little Drumme

Solo

♩ = 116,001656

5

11

16

21

27

33

39

45

50

87