

# Dj Alligator - Lollipop

00:00:00:10  
2.1,00  
Marker ##

♩ = 140,000137

Musical score for the first system of 'Lollipop'. It consists of five staves:

- Sequence\*merged:** A drum staff with a 4/4 time signature, showing a simple drum pattern.
- Sequence\*copied:** A treble clef staff with a 4/4 time signature, containing a melodic line with eighth notes and rests.
- Sequence:** A bass clef staff with a 4/4 time signature, containing a bass line with eighth notes and rests.
- Sequence:** A treble clef staff with a 4/4 time signature, containing a melodic line with eighth notes and rests.
- Sequence:** A double bass clef staff with a 4/4 time signature, containing a bass line with eighth notes and rests.

The tempo is marked as ♩ = 140,000137. The score is divided into two measures, each with a 4/4 time signature.

00:00:01:07  
3.1,00  
Marker ##

00:00:02:24  
4.1,00  
Marker ##

Musical score for the second system of 'Lollipop'. It consists of five staves:

- Sequence\*merged:** A drum staff with a 4/4 time signature, showing a complex drum pattern with a triplet of eighth notes marked with an 'x'.
- Sequence\*copied:** A treble clef staff with a 4/4 time signature, containing a melodic line with eighth notes and rests.
- Sequence:** A bass clef staff with a 4/4 time signature, containing a bass line with eighth notes and rests.
- Sequence:** A treble clef staff with a 4/4 time signature, containing a melodic line with eighth notes and rests.
- Sequence:** A double bass clef staff with a 4/4 time signature, containing a bass line with eighth notes and rests.

The tempo is marked as ♩ = 140,000137. The score is divided into two measures, each with a 4/4 time signature.

2

00:00:04:17  
5.1,00  
Marker ##

00:00:05:14  
5.3,00  
Marker ##

00:00:07:07  
6.3,00  
Marker ##

5

Sequence\*merged

Sequence\*copied

Sequence

Sequence

Sequence

00:00:08:24  
7.3,00  
Marker ##

00:00:09:10  
7.4,00  
Marker ##

7

Sequence\*merged

Sequence\*copied

Sequence

Sequence

Sequence

9

Sequence\*merged



Sequence\*copied



Sequence



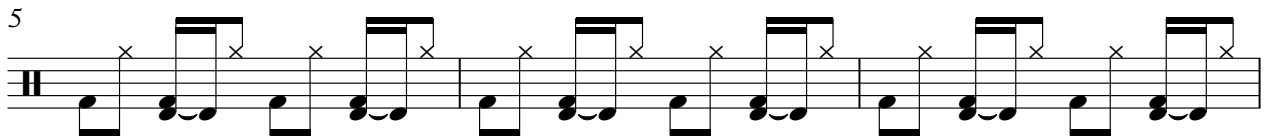
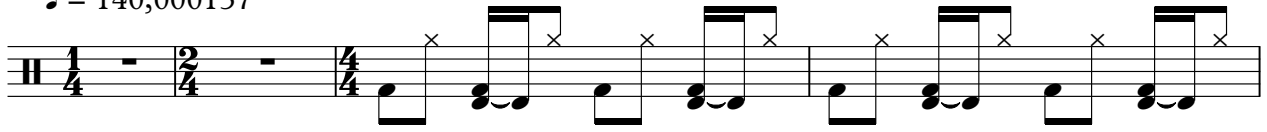
Sequence



Sequence



♩ = 140,000137



Sequence\*copied

# Dj Alligator - Lollipop

♩ = 140,000137



Sequence

Dj Alligator - Lollipop

♩ = 140,000137



6



9





Sequence

Dj Alligator - Lollipop

♩ = 140,000137

3/4 - 2/4 - 4/4 - 4/4 - 4/4

6

6