

DJ Ihadsa Giulia - DJLhasa Giulia3

♩ = 140,400146

Musical score for the first system, featuring four staves in 4/4 time. The tempo is marked as ♩ = 140,400146. The Percussion staff uses a drumstick icon and contains four quarter notes. The Synth Bass staff uses a bass clef and contains a sequence of eighth notes with stems pointing up. The Tape Sampler Keyboard [Brass] staff uses a treble clef and contains a sequence of eighth notes with stems pointing down. The Lead 1 (Square) staff uses a treble clef and contains a sequence of eighth notes with stems pointing up, including a triplet of eighth notes.

♩ = 140,400146

Musical score for the second system, featuring four staves in 4/4 time. The tempo is marked as ♩ = 140,400146. The Perc. staff contains a triplet of eighth notes followed by four quarter notes. The S. Bass staff contains a sequence of eighth notes with stems pointing up. The Tape Smp. Brs staff contains a sequence of eighth notes with stems pointing down. The Lead 1 staff contains a sequence of eighth notes with stems pointing up, including a triplet of eighth notes.

5

Perc. 

S. Bass 

Tape Smp. Brs 

Lead 1 

7

Perc. 

S. Bass 

Tape Smp. Brs 

Lead 1 

9

Perc. 

S. Bass 

Tape Smp. Brs 

Lead 1 

11

Perc. 

S. Bass 

Tape Smp. Brs 

Lead 1 

13

Perc. 

S. Bass 

Tape Smp. Brs 

Lead 1 

15

Perc. 

S. Bass 

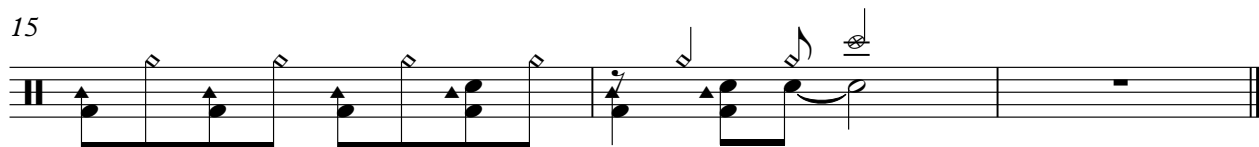
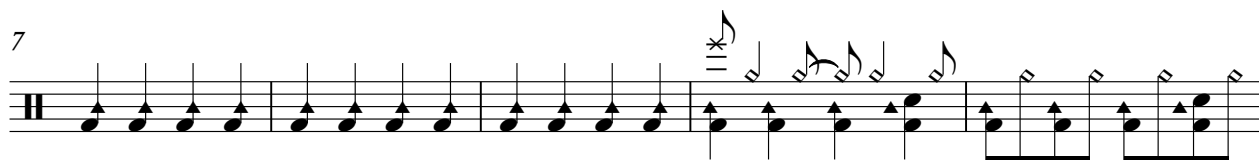
Tape Smp. Brs 

Lead 1 

Percussion

DJ Ihadsa Giulia - DJLhasa Giulia3

♩ = 140,400146



Synth Bass

DJ Ihadsa Giulia - DJLhasa Giulia3

♩ = 140,400146



Tape Sampler Keyboard [Brass]

DJ Ihadsa Giulia - DJLhasa Giulia3

♩ = 140,400146

5

8

11

14

17

Lead 1 (Square)

DJ Ihadsa Giulia - DJLhasa Giulia3

♩ = 140,400146

