

Sarah Connor - From zero to hero

0.0" 1.1,00 GM on

0.8" 1.4,38 Song Start here

♩ = 250,000000 ♩ = 124,020,000000

Saw 2

Saw 1

Saw 1 Echo

Detailed description: This block contains the first system of a guitar score. It features three staves: Saw 2, Saw 1, and Saw 1 Echo. Above the staves are two boxes with timing information: '0.0" 1.1,00 GM on' and '0.8" 1.4,38 Song Start here'. Below these boxes are two tempo markings: '♩ = 250,000000' and '♩ = 124,020,000000'. The music is in 4/4 time. Saw 2 has a series of eighth-note chords with a tremolo effect. Saw 1 and Saw 1 Echo play a bass line with a mix of eighth and quarter notes.



3

Sarah

Sarah Echo

Saw 2

Saw 1

Saw 1 Echo

Saw 3

Detailed description: This block contains the second system of the guitar score. It features six staves: Sarah, Sarah Echo, Saw 2, Saw 1, Saw 1 Echo, and Saw 3. Above the Sarah and Sarah Echo staves is a triplet marking '3'. Sarah and Sarah Echo play a triplet of eighth notes. Saw 2 continues with tremolo eighth-note chords. Saw 1 and Saw 1 Echo continue with their bass line. Saw 3 enters with a bass line of eighth notes.

5

Sarah

Sarah Echo

Percussion & Drums

Saw2

Saw 1

Saw 1 Echo

Saw3



7

Sarah

Sarah Echo

Square

Percussion & Drums

Saw 1

Saw 1 Echo

Saw3

10

Sarah

Sarah Echo

Square

Percussion & Drums

Saw2

Bass

Bass Echo

Saw 1

Saw 1 Echo

Detailed description: This musical score page, numbered 10, features nine staves. The top two staves, Sarah and Sarah Echo, contain melodic lines in treble clef with eighth and sixteenth notes. The Square staff is empty. The Percussion & Drums staff uses a drum set icon and shows rhythmic patterns with 'x' marks. The Saw2 staff features a complex, multi-layered texture with many notes. The Bass and Bass Echo staves have rhythmic patterns in bass clef. The Saw 1 and Saw 1 Echo staves consist of sustained, overlapping notes in treble clef.

13

Sarah

Sarah Echo

Bass

Bass Echo

Saw 1

Saw 1 Echo



16

Sarah

Sarah Echo

Bass

Bass Echo

Saw 1

Saw 1 Echo

18

Sarah

Sarah Echo

Saw 2

Bass

Bass Echo

Saw 1

Saw 1 Echo



20

Sarah

Sarah Echo

Square

Bass

Bass Echo

Saw 1

Saw 1 Echo

23

Sarah

Sarah Echo

Square

Bass

Bass Echo

Saw 1

Saw 1 Echo



26

Sarah

Sarah Echo

Square

Bass

Bass Echo

Saw 1

Saw 1 Echo

29

Sarah

Sarah Echo

Bass

Bass Echo

Saw 1

Saw 1 Echo



32

Sarah

Sarah Echo

Bass

Bass Echo

Saw 1

Saw 1 Echo

35

Sarah

Sarah Echo

Bass

Bass Echo

Saw 1

Saw 1 Echo



37

Sarah

Sarah Echo

Bass

Bass Echo

Saw 1

Saw 1 Echo

40

Sarah

Sarah Echo

Bass

Bass Echo

Saw 1

Saw 1 Echo



42

Sarah

Sarah Echo

Saw 2

Saw 1

Saw 1 Echo

Saw 3

45

Sarah

Sarah Echo

Saw 2

Bass

Bass Echo

Saw 1

Saw 1 Echo



48

Sarah

Sarah Echo

Bass

Bass Echo

Saw 1

Saw 1 Echo

51

Sarah

Sarah Echo

Bass

Bass Echo

Saw 1

Saw 1 Echo



54

Sarah

Sarah Echo

Saw2

Bass

Bass Echo

Saw 1

Saw 1 Echo

56

Sarah

Sarah Echo

Bass

Bass Echo

Saw 1

Saw 1 Echo



59

Sarah

Sarah Echo

Square

Bass

Bass Echo

Saw 1

Saw 1 Echo

62

Sarah

Sarah Echo

Square

Bass

Bass Echo

Saw 1

Saw 1 Echo



65

Sarah

Sarah Echo

Bass

Bass Echo

Saw 1

Saw 1 Echo

68

Sarah

Sarah Echo

Bass

Bass Echo

Saw 1

Saw 1 Echo



71

Sarah

Sarah Echo

Bass

Bass Echo

Saw 1

Saw 1 Echo

73

Sarah

Sarah Echo

Bass

Bass Echo

Saw 1

Saw 1 Echo



76

Sarah

Sarah Echo

Bass

Bass Echo

Saw 1

Saw 1 Echo



80

Sarah

Sarah Echo

84

Sarah

Sarah Echo

Square

Bass

Bass Echo

Saw 1

Saw 1 Echo



88

Bass

Bass Echo

Saw 1

Saw 1 Echo

91

Sarah

Sarah Echo

Bass

Bass Echo

Saw 1

Saw 1 Echo



94

Sarah

Sarah Echo

Bass

Bass Echo

Saw 1

Saw 1 Echo

97

Sarah

Sarah Echo

Bass

Bass Echo

Saw 1

Saw 1 Echo



100

Sarah

Sarah Echo

Bass

Bass Echo

Saw 1

Saw 1 Echo

103

Sarah

Sarah Echo

Square

Bass

Bass Echo

Saw 1

Saw 1 Echo



106

Sarah

Sarah Echo

Bass

Bass Echo

Saw 1

Saw 1 Echo

109

Sarah

Sarah Echo

Bass

Bass Echo

Saw 1

Saw 1 Echo



111

Sarah

Sarah Echo

46



50



54



58



62



66




70



74



80



84



♩ = 250,000000 ♩ = 120,000000

2

8

13

17

21

25

29

33

37

41

46



50



54



58



62



66



70



74



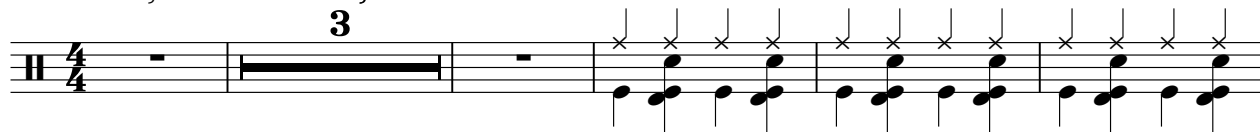
80



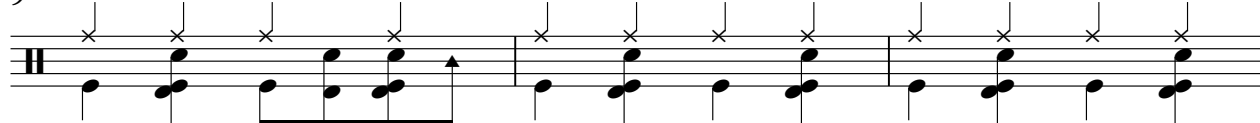
84



♩ = 250,000000 ♩ = 120,000000
3

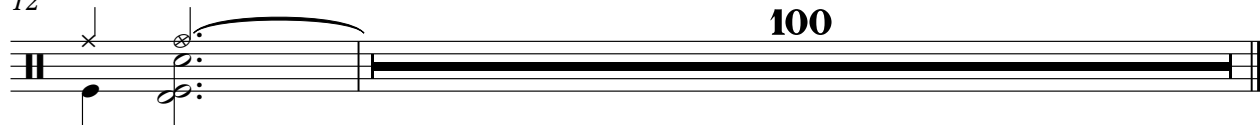


9



12

100



Sarah Connor - From zero to hero

Saw2

♩ = 250,000000 ♩ = 120,000000

4

6

3

11

6

20

22

3

46

6

54

57

Sarah Connor - From zero to hero

Bass

♩ = 250,000000 ♩ = 120,000000

8



12



15



18



21



24



27



30



33



36



V.S.

39



42



49



52



55



58



61



64



67



70



73



76



87



90



93



96



99



102



105



108



Sarah Connor - From zero to hero

Bass Echo

♩ = 250,000000 ♩ = 120,000000

8



12



15



18



21



24



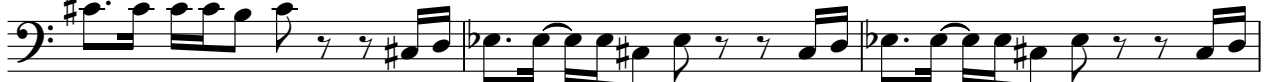
27



30



33



36



V.S.

73



76



87



90



93



96



99



102



105



108



Sarah Connor - From zero to hero

Saw 1

♩ = 250,000000 ♩ = 120,000000

5

9

17

25

33

41

45

53

61

V.S.

69



77



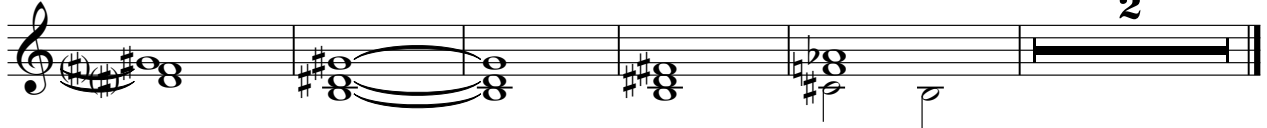
92



100



106



Sarah Connor - From zero to hero

Saw 1 Echo

♩ = 250,000000 ♩ = 120,000000

5

9

17

24

31

39

44

51

58

V.S.

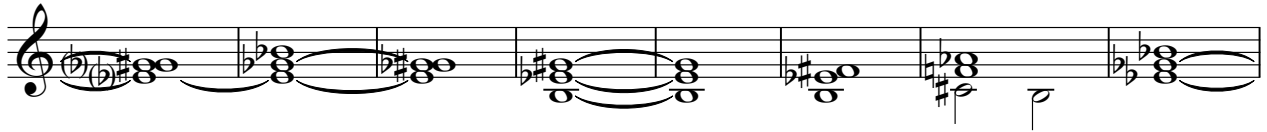
65



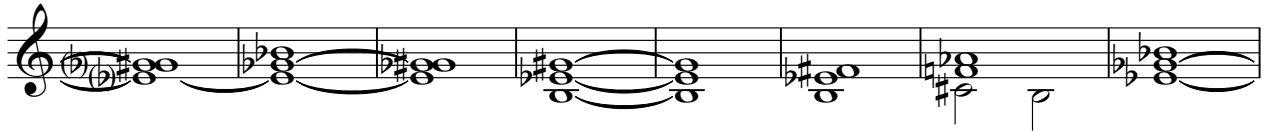
73



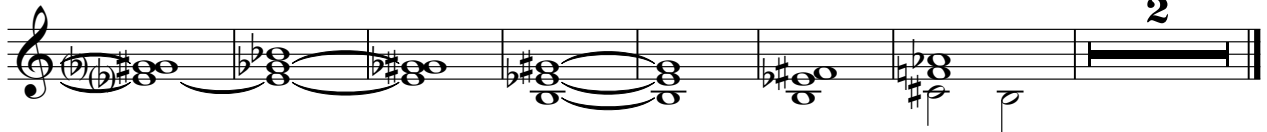
88



96



104



♩ = 250,000000 ♩ = 120,000000



6 33



42 68

