

Don Henley - The End Of The Innocence

♩ = 120,000000

DRUMS

ACOUBASS

♩ = 120,000000

STRINGS

A.PIANO 2

4

DRUMS

ACOUBASS

SOUNDTRACK

STRINGS

A.PIANO 2

The image displays a musical score for the song "The End Of The Innocence" by Don Henley. It is divided into two systems. The first system includes staves for DRUMS, ACOUBASS, STRINGS, and A.PIANO 2. The DRUMS staff shows a complex rhythmic pattern with a triplet of eighth notes in the first measure. The ACOUBASS staff has a simple bass line. The STRINGS staff features a long, sustained chord. The A.PIANO 2 staff plays chords in a 4/4 time signature. The second system continues with DRUMS, ACOUBASS, SOUNDTRACK, STRINGS, and A.PIANO 2. The DRUMS staff continues the rhythmic pattern. The ACOUBASS staff has a more active bass line. The SOUNDTRACK staff has a single note. The STRINGS staff continues with the sustained chord. The A.PIANO 2 staff plays a sequence of chords.



6

DRUMS

ACOU BASS

SOUNDTRACK

STRINGS

A.PIANO 2



8

DRUMS

ACOU BASS

SOUNDTRACK

STRINGS

A.PIANO 2

10

DRUMS

ACOUBASS

SOUNDTRACK

STRINGS

A.PIANO 2



12

DRUMS

ACOUBASS

SOUNDTRACK

STRINGS

A.PIANO 2

14

HARMONICA

DRUMS

ACOU BASS

SOUNDTRACK

STRINGS

A.PIANO 2



16

HARMONICA

DRUMS

ACOU BASS

STRINGS

A.PIANO 2

18

HARMONICA

DRUMS

ACOU BASS

VOICE OOHS

STRINGS

A.PIANO 2



20

HARMONICA

DRUMS

ACOU BASS

STRINGS

A.PIANO 2

22

HARMONICA

DRUMS

ACOU BASS

VOICE OOHS

STRINGS

A.PIANO 2



24

HARMONICA

DRUMS

ACOU BASS

VOICE OOHS

STRINGS

A.PIANO 2

26

HARMONICA

DRUMS

ACOU BASS

STRINGS

A.PIANO 2



28

HARMONICA

DRUMS

ACOU BASS

STRINGS

A.PIANO 2

30

HARMONICA

DRUMS

ACOU BASS

STRINGS

A.PIANO 2



32

HARMONICA

DRUMS

ACOU BASS

STRINGS

A.PIANO 2

34

HARMONICA

DRUMS

ACOU BASS

STRINGS

A.PIANO 2



36

HARMONICA

DRUMS

ACOU BASS

STRINGS

A.PIANO 2

38

HARMONICA

DRUMS

ACOU BASS

STRINGS

STRINGS

A.PIANO 2



40

HARMONICA

DRUMS

ACOU BASS

STRINGS

A.PIANO 2

42

HARMONICA

3

DRUMS

ACOUBASS

STRINGS

A.PIANO 2



44

HARMONICA

DRUMS

ACOUBASS

STRINGS

A.PIANO 2

46

HARMONICA

DRUMS

ACOU BASS

STRINGS

A.PIANO 2



48

HARMONICA

DRUMS

ACOU BASS

STRINGS

STRINGS

A.PIANO 2

50

DRUMS

ACOUBASS

SOUNDTRACK

STRINGS

A.PIANO 2



52

DRUMS

ACOUBASS

SOUNDTRACK

STRINGS

A.PIANO 2

54

HARMONICA

DRUMS

ACOU BASS

SOUNDTRACK

STRINGS

A.PIANO 2



56

HARMONICA

DRUMS

ACOU BASS

STRINGS

A.PIANO 2

58

HARMONICA

DRUMS

ACOU BASS

VOICE OOHS

STRINGS

A.PIANO 2



60

HARMONICA

DRUMS

ACOU BASS

VOICE OOHS

STRINGS

A.PIANO 2

62

HARMONICA

DRUMS

ACOU BASS

VOICE OOHS

STRINGS

A.PIANO 2



64

HARMONICA

DRUMS

ACOU BASS

STRINGS

A.PIANO 2

66

HARMONICA

DRUMS

ACOU BASS

STRINGS

A.PIANO 2



68

HARMONICA

DRUMS

ACOU BASS

VOICE OOHS

STRINGS

A.PIANO 2

70

HARMONICA

DRUMS

ACOU BASS

STRINGS

A.PIANO 2



72

HARMONICA

DRUMS

ACOU BASS

STRINGS

A.PIANO 2

74

HARMONICA

DRUMS

ACOU BASS

STRINGS

A.PIANO 2



76

HARMONICA

DRUMS

ACOU BASS

STRINGS

A.PIANO 2

78

HARMONICA

DRUMS

ACOU BASS

STRINGS

STRINGS

A.PIANO 2



80

HARMONICA

DRUMS

ACOU BASS

STRINGS

A.PIANO 2

82

HARMONICA

DRUMS

ACOU BASS

STRINGS

A.PIANO 2



84

HARMONICA

DRUMS

ACOU BASS

STRINGS

A.PIANO 2

86

HARMONICA

DRUMS

ACOU BASS

STRINGS

A.PIANO 2



88

HARMONICA

DRUMS

ACOU BASS

STRINGS

STRINGS

A.PIANO 2

90

HARMONICA

DRUMS

ACOU BASS

SOUNDTRACK

STRINGS

A.PIANO 2



92

DRUMS

ACOU BASS

SOUNDTRACK

STRINGS

A.PIANO 2

94

PAN FLUTE

HARMONICA

DRUMS

ACOU BASS

SOUNDTRACK

STRINGS

A.PIANO 2



96

PAN FLUTE

HARMONICA

DRUMS

ACOU BASS

STRINGS

98

PAN FLUTE

HARMONICA

DRUMS

ACOU BASS

STRINGS



100

PAN FLUTE

HARMONICA

DRUMS

ACOU BASS

STRINGS

102

PAN FLUTE

HARMONICA

DRUMS

ACOU BASS

STRINGS



104

PAN FLUTE

HARMONICA

DRUMS

ACOU BASS

STRINGS

A.PIANO 2

106

HARMONICA

DRUMS

ACOU BASS

STRINGS

A.PIANO 2



108

HARMONICA

DRUMS

ACOU BASS

VOICE OOHS

STRINGS

A.PIANO 2

110

HARMONICA

DRUMS

ACOU BASS

STRINGS

A.PIANO 2



112

HARMONICA

DRUMS

ACOU BASS

VOICE OOHS

STRINGS

A.PIANO 2

114

HARMONICA

DRUMS

ACOU BASS

VOICE OOHS

STRINGS

A.PIANO 2



116

HARMONICA

DRUMS

ACOU BASS

VOICE OOHS

STRINGS

A.PIANO 2

118

HARMONICA

DRUMS

ACOU BASS

VOICE OOHS

STRINGS

A.PIANO 2



120

HARMONICA

DRUMS

ACOU BASS

STRINGS

STRINGS

A.PIANO 2

122

HARMONICA

DRUMS

ACOU BASS

STRINGS

A.PIANO 2



124

HARMONICA

DRUMS

ACOU BASS

STRINGS

A.PIANO 2

126

HARMONICA

DRUMS

ACOU BASS

STRINGS

A.PIANO 2



128

HARMONICA

DRUMS

ACOU BASS

STRINGS

A.PIANO 2

130

HARMONICA

DRUMS

ACOU BASS

STRINGS

STRINGS

A.PIANO 2



132

HARMONICA

DRUMS

ACOU BASS

SOUNDTRACK

STRINGS

A.PIANO 2

134

HARMONICA

DRUMS

ACOU BASS

SOUNDTRACK

STRINGS

A.PIANO 2



136

HARMONICA

DRUMS

ACOU BASS

SOUNDTRACK

STRINGS

A.PIANO 2

138

HARMONICA

DRUMS

ACOU BASS

SOUNDTRACK

STRINGS

A.PIANO 2



140

HARMONICA

DRUMS

ACOU BASS

SOUNDTRACK

STRINGS

A.PIANO 2

142

HARMONICA

DRUMS

ACOU BASS

SOUNDTRACK

STRINGS

A.PIANO 2



144

HARMONICA

DRUMS

ACOU BASS

STRINGS

A.PIANO 2

146

DRUMS

ACOUBASS

STRINGS

A.PIANO 2



148

DRUMS

ACOUBASS

STRINGS

A.PIANO 2

HARMONICA

Don Henley - The End Of The Innocence

♩ = 120,000000

13



17

3

21

24

28

33

38

42

3

46

4

54

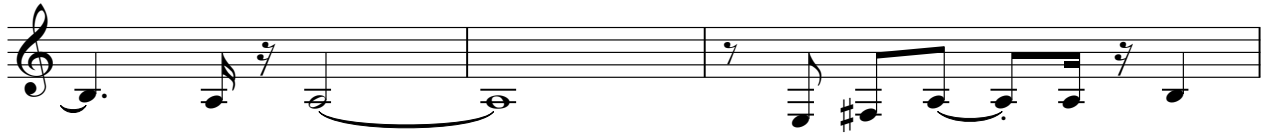


HARMONICA

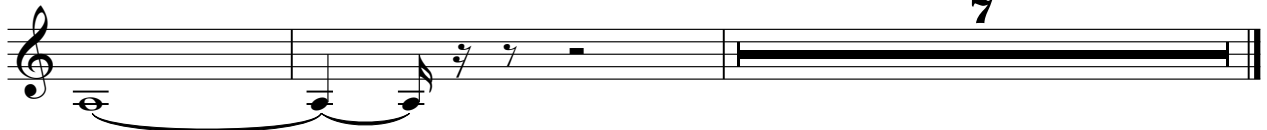
135



140



143



7

Don Henley - The End Of The Innocence

DRUMS

♩ = 120,000000 3

5

8

11

14

17

20

23

26

29

V.S.

DRUMS

Drum notation for measures 32 through 59. The notation is presented in two staves per measure: a top staff for the snare drum and a bottom staff for the bass drum. The snare drum part consists of a repeating rhythmic pattern of eighth notes, often grouped in pairs or fours. The bass drum part consists of a repeating rhythmic pattern of eighth notes, often grouped in pairs or fours. The notation is organized into systems of two staves each, with measure numbers 32, 35, 38, 41, 44, 47, 50, 53, 56, and 59 marking the beginning of each system.

DRUMS

62

Musical notation for drum set at measure 62. The top staff shows a snare drum pattern with sixteenth notes. The bottom staff shows a bass drum pattern with quarter notes and eighth notes.

65

Musical notation for drum set at measure 65. The top staff shows a snare drum pattern with sixteenth notes. The bottom staff shows a bass drum pattern with quarter notes and eighth notes.

68

Musical notation for drum set at measure 68. The top staff shows a snare drum pattern with sixteenth notes. The bottom staff shows a bass drum pattern with quarter notes and eighth notes.

71

Musical notation for drum set at measure 71. The top staff shows a snare drum pattern with sixteenth notes. The bottom staff shows a bass drum pattern with quarter notes and eighth notes.

74

Musical notation for drum set at measure 74. The top staff shows a snare drum pattern with sixteenth notes. The bottom staff shows a bass drum pattern with quarter notes and eighth notes.

77

Musical notation for drum set at measure 77. The top staff shows a snare drum pattern with sixteenth notes. The bottom staff shows a bass drum pattern with quarter notes and eighth notes.

80

Musical notation for drum set at measure 80. The top staff shows a snare drum pattern with sixteenth notes. The bottom staff shows a bass drum pattern with quarter notes and eighth notes.

83

Musical notation for drum set at measure 83. The top staff shows a snare drum pattern with sixteenth notes. The bottom staff shows a bass drum pattern with quarter notes and eighth notes.

86

Musical notation for drum set at measure 86. The top staff shows a snare drum pattern with sixteenth notes. The bottom staff shows a bass drum pattern with quarter notes and eighth notes.

89

Musical notation for drum set at measure 89. The top staff shows a snare drum pattern with sixteenth notes. The bottom staff shows a bass drum pattern with quarter notes and eighth notes.

V.S.

92

95

98

101

104

107

110

113

116

119

The image displays a series of ten systems of drum notation, each corresponding to a specific measure number (92, 95, 98, 101, 104, 107, 110, 113, 116, 119). Each system consists of two staves: a top staff for the snare drum and a bottom staff for the bass drum. The notation uses 'x' marks on the top staff to indicate snare hits and solid black notes on the bottom staff to indicate bass drum hits. The patterns are highly rhythmic and repetitive, typical of a drum part in a musical score. The measures are arranged in a vertical sequence, with each system starting at its respective measure number.

DRUMS

122

Drum notation for measures 122-124. The top staff shows a continuous eighth-note pattern with 'x' marks. The bottom staff shows a bass drum pattern with quarter notes and eighth notes.

125

Drum notation for measures 125-127. Similar to the previous system, with eighth-note patterns and bass drum accompaniment.

128

Drum notation for measures 128-130. Similar to the previous system, with eighth-note patterns and bass drum accompaniment.

131

Drum notation for measures 131-133. Similar to the previous system, with eighth-note patterns and bass drum accompaniment.

134

Drum notation for measures 134-136. Similar to the previous system, with eighth-note patterns and bass drum accompaniment.

137

Drum notation for measures 137-139. Similar to the previous system, with eighth-note patterns and bass drum accompaniment.

140

Drum notation for measures 140-142. Similar to the previous system, with eighth-note patterns and bass drum accompaniment.

143

Drum notation for measures 143-145. Similar to the previous system, with eighth-note patterns and bass drum accompaniment.

146

Drum notation for measures 146-147. Similar to the previous system, with eighth-note patterns and bass drum accompaniment.

148

Drum notation for measure 148. The top staff has a pattern of eighth notes with 'x' marks. The bottom staff has a bass drum pattern. The system ends with a double bar line and a '2' indicating a second ending.

ACOU BASS

Don Henley - The End Of The Innocence

♩ = 120,000000

2



7



12



17



22



27



32



38



43



49



V.S.

SOUNDTRACK

Don Henley - The End Of The Innocence

♩ = 120,000000

4 2

11

36

52

36

93

38

136

2

141

9

VOICE OOHS

Don Henley - The End Of The Innocence

♩ = 120,000000

17 2

24

34

63

4 38

108

2

115

2 33

Don Henley - The End Of The Innocence

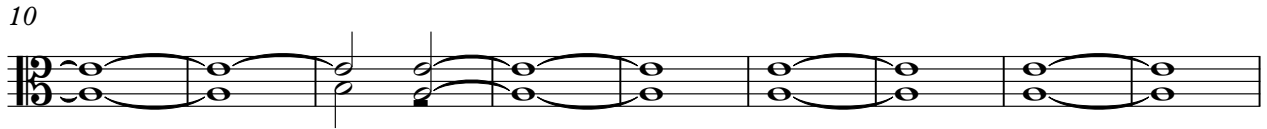
STRINGS

♩ = 120,000000

2



10



19



28

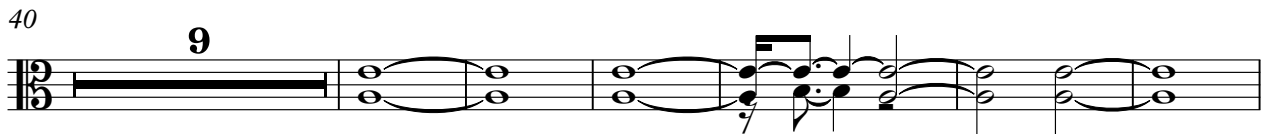


35



40

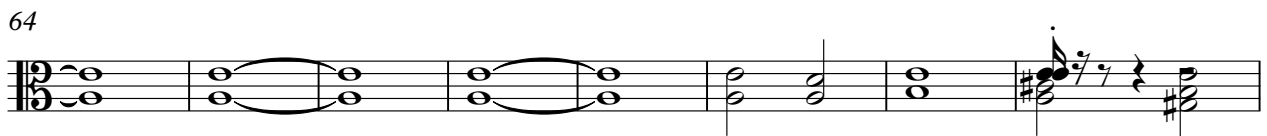
9



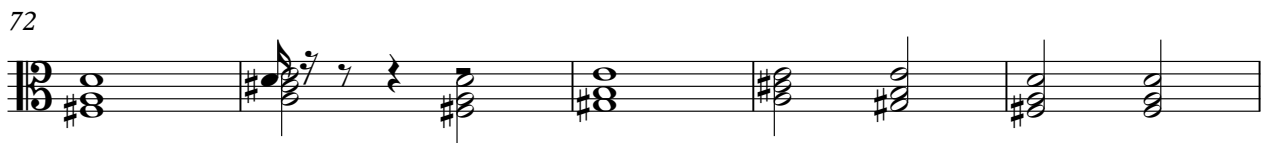
55



64



72



77

9



2

STRINGS

89

Musical staff for measure 89, featuring a bass clef and a 3/8 time signature. The staff contains a series of chords and melodic lines, including a triplet of eighth notes in the second measure.

97

Musical staff for measure 97, featuring a bass clef and a 3/8 time signature. The staff contains a series of chords and melodic lines, including a triplet of eighth notes in the second measure.

105

Musical staff for measure 105, featuring a bass clef and a 3/8 time signature. The staff contains a series of chords and melodic lines, including a triplet of eighth notes in the second measure.

114

Musical staff for measure 114, featuring a bass clef and a 3/8 time signature. The staff contains a series of chords and melodic lines, including a triplet of eighth notes in the second measure.

122

Musical staff for measure 122, featuring a bass clef and a 3/8 time signature. The staff contains a series of chords and melodic lines, including a triplet of eighth notes in the second measure. A large number '9' is written above the first measure.

137

Musical staff for measure 137, featuring a bass clef and a 3/8 time signature. The staff contains a series of chords and melodic lines, including a triplet of eighth notes in the second measure.

145

Musical staff for measure 145, featuring a bass clef and a 3/8 time signature. The staff contains a series of chords and melodic lines, including a triplet of eighth notes in the second measure. A large number '2' is written above the final measure.

STRINGS

Don Henley - The End Of The Innocence

♩ = 120,000000

38

Don Henley - The End Of The Innocence

A.PIANO 2

♩ = 120,000000

6

11

16

21

26

31

37

43

49

V.S.

54

59

65

71

77

83

89

94

10

108

113

118



124



130



135



140



145



147

