

dysneymidi - greatbig

♩ = 88,000023

From Disney's Carousel of Progres

There's a Great Big Beautiful Tom

Acoustic Bass

♩ = 88,000023

Words and Music by Richard M. and

2

From Disney's Carousel of Progres

There's a Great Big Beautiful Tom

A. Bass

Words and Music by Richard M. and

3

From Disney's Carousel of Progress

There's a Great Big Beautiful Tom

A. Bass

Words and Music by Richard M. and

Detailed description of system 3: This system contains measures 1 through 4 of the piece. The vocal line (top staff) begins with a quarter rest, followed by eighth notes G4, A4, B4, and C5, with slurs and ties. The piano line (second staff) starts with a quarter note G4, followed by eighth notes A4, B4, and C5, then a quarter note B4, and finally a half note G4. The bass line (third staff) starts with a quarter note G2, followed by eighth notes A2, B2, and C3, with a slur and tie over the first three notes, and a quarter note B2. The guitar line (bottom staff) has a rhythmic pattern of eighth notes: G4, A4, B4, C5, B4, A4, G4, with slurs and ties. A '3' above the piano line indicates a triplet of eighth notes (A4, B4, C5). A '3' below the bass line indicates a triplet of eighth notes (A2, B2, C3).

4

From Disney's Carousel of Progress

There's a Great Big Beautiful Tom

A. Bass

Words and Music by Richard M. and

Detailed description of system 4: This system contains measures 5 through 8 of the piece. The vocal line (top staff) continues with eighth notes D5, E5, F5, and G5, with slurs and ties. The piano line (second staff) starts with a quarter note G4, followed by eighth notes A4, B4, and C5, then a quarter note B4, and finally a half note G4. The bass line (third staff) starts with a quarter note G2, followed by eighth notes A2, B2, and C3, with a slur and tie over the first three notes, and a quarter note B2. The guitar line (bottom staff) has a rhythmic pattern of eighth notes: G4, A4, B4, C5, B4, A4, G4, with slurs and ties. A '3' above the piano line indicates a triplet of eighth notes (A4, B4, C5). A '3' below the bass line indicates a triplet of eighth notes (A2, B2, C3).


5

From Disney's Carousel of Progress

There's a Great Big Beautiful Tom

A. Bass

Words and Music by Richard M. and




6

From Disney's Carousel of Progress

There's a Great Big Beautiful Tom

A. Bass

Words and Music by Richard M. and



7

From Disney's Carousel of Progress

Hn.

There's a Great Big Beautiful Tom

A. Bass

Words and Music by Richard M. and

Solo

8

From Disney's Carousel of Progress

There's a Great Big Beautiful Tom

A. Bass

Words and Music by Richard M. and

9

From Disney's Carousel of Progress

There's a Great Big Beautiful Tom

A. Bass

Words and Music by Richard M. and

Solo

10

From Disney's Carousel of Progress

There's a Great Big Beautiful Tom

A. Bass

Words and Music by Richard M. and

11

From Disney's Carousel of Progress

There's a Great Big Beautiful Tom

A. Bass

Words and Music by Richard M. and

12

From Disney's Carousel of Progress

There's a Great Big Beautiful Tom

A. Bass

Words and Music by Richard M. and

13

From Disney's Carousel of Progress

There's a Great Big Beautiful Tom

A. Bass

Words and Music by Richard M. and

Solo

14

From Disney's Carousel of Progress

There's a Great Big Beautiful Tom

A. Bass

Words and Music by Richard M. and

15

From Disney's Carousel of Progress

There's a Great Big Beautiful Tom

A. Bass

Words and Music by Richard M. and

Detailed description of the musical score for measures 15 and 16. Measure 15 consists of four staves. The top staff (treble clef) contains a sequence of eighth notes and rests: quarter rest, eighth note, quarter rest, eighth note, quarter rest, eighth note, quarter rest, eighth note, quarter rest, eighth note, quarter rest, eighth note, quarter rest, eighth note, quarter rest, eighth note. The second staff (treble clef) contains a half note followed by a quarter note. The third staff (bass clef) contains a series of eighth notes and rests: quarter rest, eighth note, quarter rest, eighth note, quarter rest, eighth note, quarter rest, eighth note, quarter rest, eighth note, quarter rest, eighth note, quarter rest, eighth note, quarter rest, eighth note. The bottom staff (treble clef) contains a sequence of eighth notes and rests: quarter rest, eighth note, quarter rest, eighth note, quarter rest, eighth note, quarter rest, eighth note, quarter rest, eighth note, quarter rest, eighth note, quarter rest, eighth note, quarter rest, eighth note.

16

From Disney's Carousel of Progress

There's a Great Big Beautiful Tom

A. Bass

Words and Music by Richard M. and

Detailed description of the musical score for measures 16 and 17. Measure 16 consists of four staves. The top staff (treble clef) contains a half note followed by a quarter note. The second staff (treble clef) contains a series of eighth notes and rests: quarter rest, eighth note, quarter rest, eighth note, quarter rest, eighth note, quarter rest, eighth note, quarter rest, eighth note, quarter rest, eighth note, quarter rest, eighth note, quarter rest, eighth note. The third staff (bass clef) contains a series of eighth notes and rests: quarter rest, eighth note, quarter rest, eighth note, quarter rest, eighth note, quarter rest, eighth note, quarter rest, eighth note, quarter rest, eighth note, quarter rest, eighth note, quarter rest, eighth note. The bottom staff (treble clef) contains a sequence of eighth notes and rests: quarter rest, eighth note, quarter rest, eighth note, quarter rest, eighth note, quarter rest, eighth note, quarter rest, eighth note, quarter rest, eighth note, quarter rest, eighth note, quarter rest, eighth note.



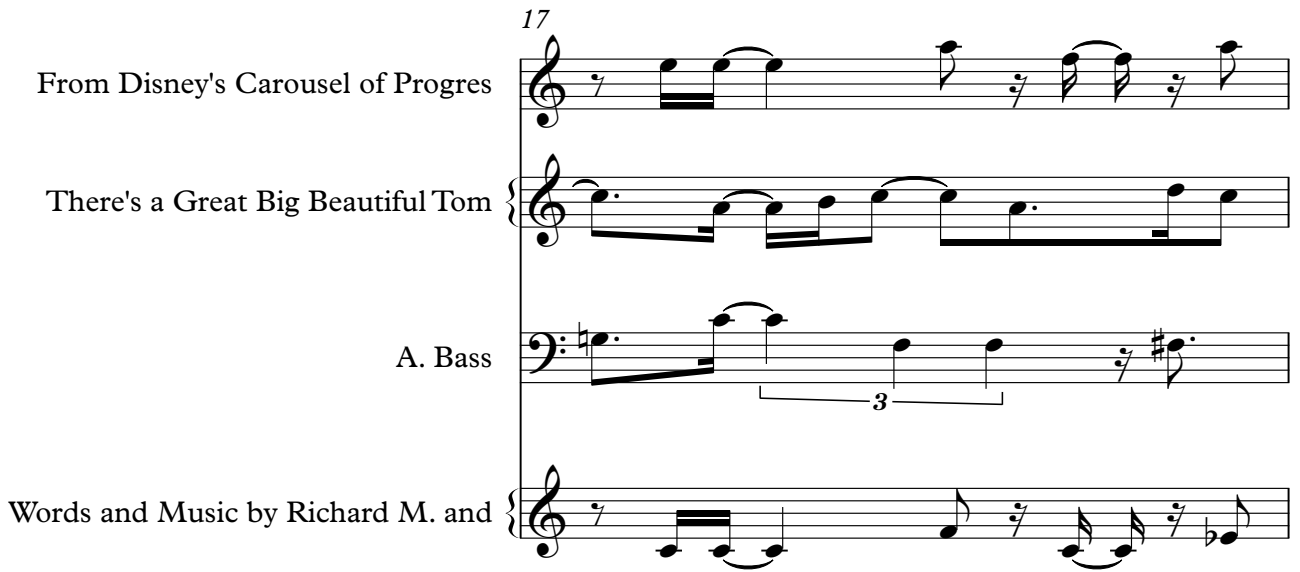
17

From Disney's Carousel of Progress

There's a Great Big Beautiful Tom

A. Bass

Words and Music by Richard M. and



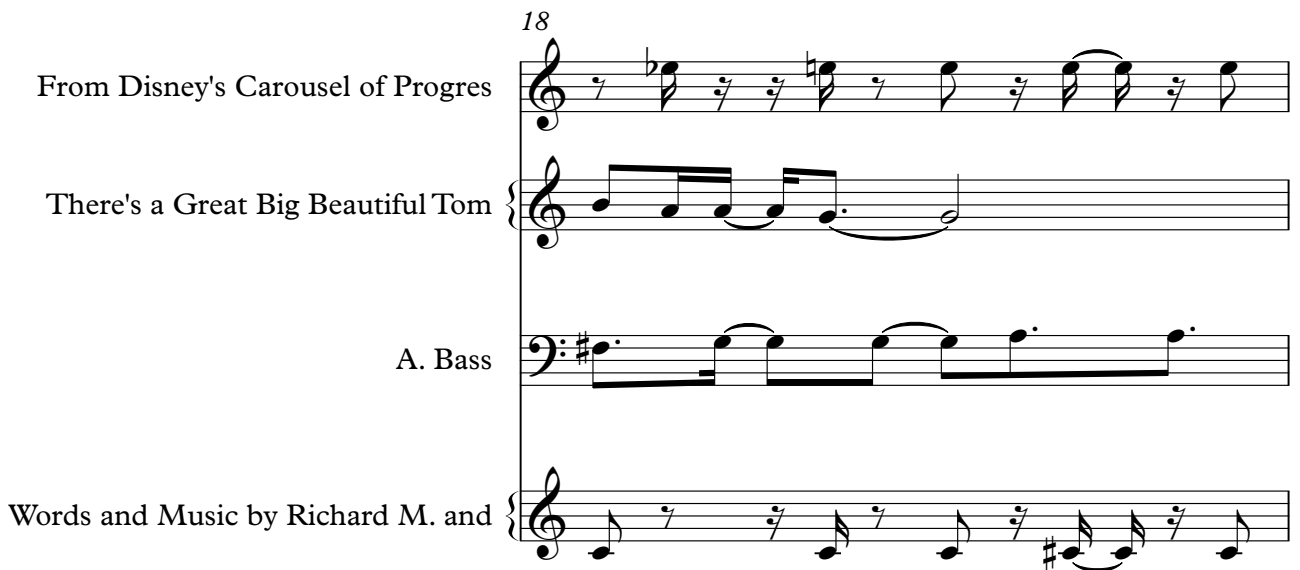
18

From Disney's Carousel of Progress

There's a Great Big Beautiful Tom

A. Bass

Words and Music by Richard M. and



19

From Disney's Carousel of Progress

There's a Great Big Beautiful Tom

A. Bass

Words and Music by Richard M. and

20

From Disney's Carousel of Progress

There's a Great Big Beautiful Tom

A. Bass

Words and Music by Richard M. and

21

From Disney's Carousel of Progres

Musical staff in treble clef with a 7/8 time signature. The melody consists of eighth notes with various rests and accents.

There's a Great Big Beautiful Tom

Musical staff in treble clef. The melody features a series of eighth notes followed by a half note.

A. Bass

Musical staff in bass clef. The bass line includes a triplet of eighth notes and a quarter note with an accent.

Words and Music by Richard M. and

Musical staff in treble clef. The melody consists of eighth notes with various rests and accents.

22

From Disney's Carousel of Progres

Musical staff in treble clef with a 7/8 time signature. The melody consists of eighth notes with various rests and accents.

There's a Great Big Beautiful Tom

Musical staff in treble clef. The melody features a series of eighth notes followed by a half note.

A. Bass

Musical staff in bass clef. The bass line includes a triplet of eighth notes and a quarter note with an accent.

Words and Music by Richard M. and

Musical staff in treble clef. The melody consists of eighth notes with various rests and accents.

23

From Disney's Carousel of Progress

There's a Great Big Beautiful Tom

A. Bass

Words and Music by Richard M. and

24

From Disney's Carousel of Progress

There's a Great Big Beautiful Tom

A. Bass

Words and Music by Richard M. and

25

From Disney's Carousel of Progress

There's a Great Big Beautiful Tom

A. Bass

Words and Music by Richard M. and

Detailed description: This block contains the musical notation for measures 25 and 26. It consists of four staves. The top staff is a vocal line for 'From Disney's Carousel of Progress' in treble clef. The second staff is a vocal line for 'There's a Great Big Beautiful Tom' in treble clef. The third staff is a bass line for 'A. Bass' in bass clef, featuring a triplet of eighth notes. The bottom staff is a guitar line for 'Words and Music by Richard M. and' in treble clef, also featuring a triplet of eighth notes. The music is in 4/4 time.

26

From Disney's Carousel of Progress

Hn.

There's a Great Big Beautiful Tom

A. Bass

Words and Music by Richard M. and

Solo

Detailed description: This block contains the musical notation for measures 26 and 27. It consists of five staves. The top staff is a vocal line for 'From Disney's Carousel of Progress' in treble clef. The second staff is a horn line for 'Hn.' in treble clef. The third staff is a vocal line for 'There's a Great Big Beautiful Tom' in treble clef. The fourth staff is a bass line for 'A. Bass' in bass clef, featuring a triplet of eighth notes. The bottom staff is a guitar solo line for 'Solo' in treble clef, also featuring a triplet of eighth notes. The music is in 4/4 time.

27

From Disney's Carousel of Progress

There's a Great Big Beautiful Tom

A. Bass

Words and Music by Richard M. and

Solo

28

From Disney's Carousel of Progress

There's a Great Big Beautiful Tom

A. Bass

Words and Music by Richard M. and

Solo

29

From Disney's Carousel of Progres

Musical staff in treble clef showing a sequence of eighth notes with slurs and ties, including a dotted quarter note.

There's a Great Big Beautiful Tom

Musical staff in treble clef showing a sequence of eighth notes with slurs and ties.

A. Bass

Musical staff in bass clef showing a sequence of eighth notes with slurs and ties.

Words and Music by Richard M. and

Musical staff in treble clef showing a sequence of eighth notes with slurs and ties, including a flat sign.

30

From Disney's Carousel of Progres

Musical staff in treble clef showing a sequence of eighth notes with slurs and ties, ending with a sharp sign.

There's a Great Big Beautiful Tom

Musical staff in treble clef showing a sequence of eighth notes with slurs and ties, including a sharp sign.

A. Bass

Musical staff in bass clef showing a sequence of eighth notes with slurs and ties, including a triplet of eighth notes.

Words and Music by Richard M. and

Musical staff in treble clef showing a sequence of eighth notes with slurs and ties.

31

From Disney's Carousel of Progress

There's a Great Big Beautiful Tom

A. Bass

Words and Music by Richard M. and

32

From Disney's Carousel of Progress

There's a Great Big Beautiful Tom

A. Bass

Words and Music by Richard M. and

Solo



33

From Disney's Carousel of Progress

There's a Great Big Beautiful Tom

A. Bass

Words and Music by Richard M. and

34

From Disney's Carousel of Progress

There's a Great Big Beautiful Tom

A. Bass

Words and Music by Richard M. and

35

From Disney's Carousel of Progress

There's a Great Big Beautiful Tom

A. Bass

Words and Music by Richard M. and

36

From Disney's Carousel of Progress

There's a Great Big Beautiful Tom

A. Bass

Words and Music by Richard M. and

37

From Disney's Carousel of Progress

There's a Great Big Beautiful Tom

A. Bass

Words and Music by Richard M. and

38

From Disney's Carousel of Progress

There's a Great Big Beautiful Tom

A. Bass

Words and Music by Richard M. and

From Disney's Carousel of Progress

39

A musical staff in treble clef with a key signature of one flat (Bb) and a 4/4 time signature. It contains a melodic line starting with a quarter note G4, followed by a quarter note A4, a quarter note Bb4, and a quarter note C5. This is followed by a triplet of eighth notes: Bb4, A4, and G4. The staff ends with a double bar line.

There's a Great Big Beautiful Tom

A musical staff in treble clef with a key signature of one flat (Bb) and a 4/4 time signature. It contains a single quarter note G4, followed by a whole rest for the remainder of the measure. The staff ends with a double bar line.

A. Bass

A musical staff in bass clef with a key signature of one flat (Bb) and a 4/4 time signature. It contains a melodic line starting with a quarter note G2, followed by a quarter note F2, a quarter note E2, and a quarter note D2. This is followed by a triplet of eighth notes: C2, B1, and A1. The staff ends with a double bar line.

Words and Music by Richard M. and

A musical staff in treble clef with a key signature of one flat (Bb) and a 4/4 time signature. It contains a quarter note G4, followed by a quarter rest, a quarter note A4, and a quarter note Bb4. The staff ends with a double bar line.



31



34



37



Horn in F

dysneymidi - greatbig

♩ = 88,000023

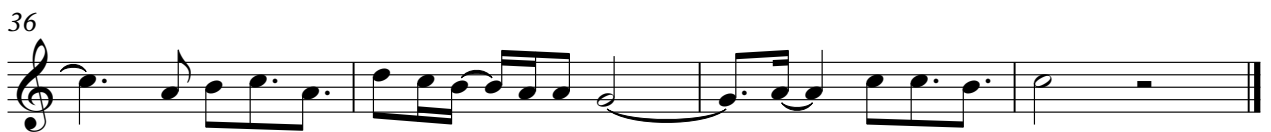
**6** **18**

26

**13**

dysneymidi - greatbig  
There's a Great Big Beautiful Tom

♩ = 88,000023





dysneymidi - greatbig

Acoustic Bass

♩ = 88,000023

1

5

9

13

17

21

25

29

33

36

dysneymidi - greatbig  
Words and Music by Richard M. and

♩ = 88,000023



V.S.

27



29



31



34



37



Solo

dysneymidi - greatbig

♩ = 88,000023

6 3 3

13

12 3

28

3 7