

dysneymidi - stayawak

♩ = 75,000000 ♩ = 67,500000 = 235,000000

Melody

Piano 1

Piano 2



6

Melody

Piano 1

Piano 2

11

Melody

Piano 1

Piano 2



16

Melody

Piano 1

Piano 2

21

Melody

Drums

Woodblocks

Piano 1

Piano 2

Bass

Vocals

Strings

The image shows a musical score for measures 21 through 24. The score is arranged in a vertical stack of staves. The instruments and parts are: Melody (treble clef), Drums (percussion clef), Woodblocks (percussion clef), Piano 1 (grand staff), Piano 2 (bass clef), Bass (bass clef), Vocals (treble clef), and Strings (treble clef). Measure 21 starts with a rest for the Melody, Drums, and Woodblocks. The Piano 1 part begins with a bass line. The Piano 2 part has a bass line. The Bass part has a bass line. The Vocals part has a rest. The Strings part has a rest. In measure 22, the Melody, Drums, and Woodblocks enter. The Piano 1 part continues with a bass line. The Piano 2 part continues with a bass line. The Bass part continues with a bass line. The Vocals part has a rest. The Strings part has a rest. In measure 23, the Melody, Drums, and Woodblocks continue. The Piano 1 part continues with a bass line. The Piano 2 part continues with a bass line. The Bass part continues with a bass line. The Vocals part has a rest. The Strings part has a rest. In measure 24, the Melody, Drums, and Woodblocks continue. The Piano 1 part continues with a bass line. The Piano 2 part continues with a bass line. The Bass part continues with a bass line. The Vocals part has a rest. The Strings part has a rest.

25

Melody

Drums

Woodblocks

Piano 1

Piano 2

Bass

Vocals

Strings

Detailed description: This is a page of a musical score, page 4, starting at measure 25. It features eight staves. The Melody staff (treble clef) has a half note G4, a quarter note A4, a quarter note B4, and a quarter note C5. The Drums staff (percussion clef) has a dotted quarter note, an eighth note, a quarter note, a dotted quarter note, an eighth note, and a quarter note. The Woodblocks staff (percussion clef) has a quarter rest, an eighth note, a quarter note, an eighth note, a quarter note, a quarter rest, an eighth note, a quarter note, an eighth note, and a quarter note. The Piano 1 staff (grand staff) has a quarter rest, a quarter note, a quarter note, a quarter note, a quarter note, a quarter note, a quarter note, and a quarter note. The Piano 2 staff (bass clef) has a half note, a quarter note, a quarter note, a quarter note, a quarter note, a quarter note, a quarter note, and a quarter note. The Bass staff (bass clef) has a half note, a quarter note, a quarter note, and a quarter note. The Vocals staff (treble clef) has a whole note chord, a whole note chord, and a whole note chord. The Strings staff (treble clef) has a half note, a quarter note, a quarter note, and a whole note chord.

28

Melody

Drums

Woodblocks

Piano 1

Piano 2

Bass

Vocals

Strings

This musical score page contains seven staves for measures 28 through 31. The staves are labeled as follows: Melody (treble clef), Drums (percussion clef), Woodblocks (percussion clef), Piano 1 (grand staff), Piano 2 (bass clef), Bass (bass clef), Vocals (treble clef), and Strings (treble clef). The Melody staff shows a sequence of notes: quarter, quarter, quarter, quarter, quarter, quarter, quarter, quarter. The Drums staff features a rhythmic pattern of eighth and quarter notes. The Woodblocks staff has a similar rhythmic pattern with some rests. Piano 1 consists of two staves with chords and single notes. Piano 2 has a bass line with quarter and eighth notes. The Bass staff has a simple line of quarter notes. The Vocals staff shows a melodic line with some rests and a slur. The Strings staff has a melodic line with a long slur across the final two measures.

32

Melody

Drums

Woodblocks

Piano 1

Piano 2

Bass

Vocals

Strings

This musical score page contains seven staves for measures 32 through 35. The staves are labeled as follows: Melody (treble clef), Drums (drum notation), Woodblocks (drum notation), Piano 1 (treble clef), Piano 2 (grand staff), Bass (bass clef), Vocals (treble clef), and Strings (treble clef). The score is written in a key signature of one sharp (F#) and a common time signature (C). The Melody staff shows a sequence of notes: G4, A4, B4, C#5, B4, A4, G4. The Drums staff features a rhythmic pattern of eighth and quarter notes. The Woodblocks staff has a similar rhythmic pattern. The Piano 1 staff provides harmonic support with chords and single notes. The Piano 2 staff has a more active role with eighth and sixteenth notes. The Bass staff plays a simple line of notes: G2, A2, B2, C#3, B2, A2, G2. The Vocals staff contains block chords. The Strings staff plays a melodic line with some grace notes and rests.

36

Melody

Drums

Woodblocks

Piano 1

Piano 2

Bass

Vocals

Strings

This musical score page contains seven staves for measures 36 through 39. The Melody staff uses a treble clef and contains a sequence of notes: a dotted quarter note, a half note, a quarter note with a sharp sign, a quarter note with a flat sign, a quarter note with a sharp sign, and a quarter note with a sharp sign. The Drums staff uses a drum clef and shows a rhythmic pattern of eighth and quarter notes. The Woodblocks staff uses a woodblock clef and features a pattern of eighth notes with rests. Piano 1 is a grand staff with treble and bass clefs, showing chords and moving lines. Piano 2 is also a grand staff, with the right hand mostly resting and the left hand playing chords. The Bass staff uses a bass clef and plays a simple line of quarter notes. The Vocals staff uses a treble clef and contains block chords. The Strings staff uses a treble clef and features a sustained chord with a long slur.

40

Melody

Drums

Woodblocks

Piano 1

Piano 2

Bass

Vocals

Strings

The musical score for measures 40 and 41 is as follows:

- Measure 40:**
 - Melody:** Treble clef, quarter note G4, quarter note B4, half note D5.
 - Drums:** Treble clef, quarter note G4, quarter note B4, quarter note D5, quarter note F5, quarter note A5, quarter note C6.
 - Woodblocks:** Treble clef, quarter rest, quarter note G4, quarter note B4, quarter note D5, quarter note F5, quarter note A5, quarter note C6.
 - Piano 1:** Treble clef, quarter rest, quarter note G4, quarter note B4, quarter note D5; Bass clef, quarter note G2, quarter note B2, quarter note D3, quarter note F3, quarter note A3, quarter note C4.
 - Piano 2:** Treble clef, quarter rest, quarter note G4, quarter note B4, quarter note D5; Bass clef, quarter note G2, quarter note B2, quarter note D3, quarter note F3, quarter note A3, quarter note C4.
 - Bass:** Bass clef, quarter note G2, quarter note B2, quarter note D3, quarter note F3, quarter note A3, quarter note C4.
 - Vocals:** Treble clef, quarter note G4, quarter note B4, quarter note D5.
 - Strings:** Treble clef, quarter note G4, quarter note B4, quarter note D5.
- Measure 41:**
 - Melody:** Treble clef, half note D5, half note F5, half note A5, half note C6.
 - Drums:** Treble clef, quarter note G4, quarter note B4, quarter note D5, quarter note F5, quarter note A5, quarter note C6.
 - Woodblocks:** Treble clef, quarter note G4, quarter note B4, quarter note D5, quarter note F5, quarter note A5, quarter note C6.
 - Piano 1:** Treble clef, quarter rest, quarter note G4, quarter note B4, quarter note D5; Bass clef, quarter note G2, quarter note B2, quarter note D3, quarter note F3, quarter note A3, quarter note C4.
 - Piano 2:** Treble clef, quarter rest, quarter note G4, quarter note B4, quarter note D5; Bass clef, quarter note G2, quarter note B2, quarter note D3, quarter note F3, quarter note A3, quarter note C4.
 - Bass:** Bass clef, quarter note G2, quarter note B2, quarter note D3, quarter note F3, quarter note A3, quarter note C4.
 - Vocals:** Treble clef, half note D5, half note F5, half note A5, half note C6.
 - Strings:** Treble clef, half note D5, half note F5, half note A5, half note C6.

42

Melody

Drums

Woodblocks

Piano 1

Piano 2

Bass

Vocals

Strings

dysneymidi - stayawak

Melody

♩ = 75,000000 ♩ = 67,000000 ♩ = 75,000000

3

10

18

26

33

39

2

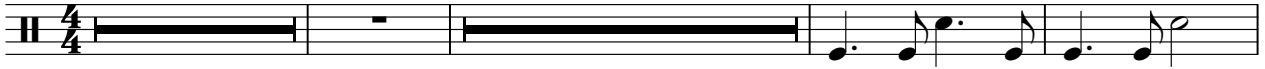
Drums

dysneymidi - stayawak

♩ = 75,000000 ♩ = 67,6999999999999999

3

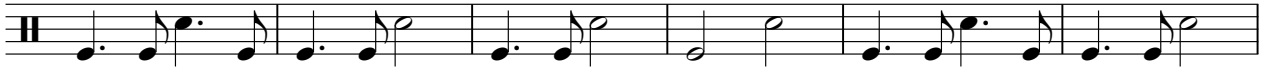
17



24



30



36



40



Woodblocks

dysneymidi - stayawak

♩ = 75,000000 ♩ = 67,500000

4/4 3 17

24

29

34

39

41

dysneymidi - stayawak

Piano 1

♩ = 75,000000 ♩ = 75,000000

8

15

22

29

36

V.S.

40

The musical score for Piano 1, measures 40-44, is presented in a grand staff format. The treble clef staff contains a whole rest in measure 40, followed by a quarter note in measure 41, and whole rests in measures 42, 43, and 44. The bass clef staff contains a sequence of notes: a quarter note in measure 40, followed by eighth notes in measures 41 and 42, and quarter notes in measures 43 and 44. A slur is placed over the eighth notes in measures 41 and 42, and another slur is placed over the quarter notes in measures 43 and 44. The piece concludes with a double bar line at the end of measure 44.

Piano 2

dysneymidi - stayawak

♩ = 75,000000 ♩ = 67,600000

7

13

19

26

32

V.S.

38

The musical score for Piano 2, measures 38-43, is written on a grand staff with a treble and bass clef. The key signature has one sharp (F#) and the time signature is 4/4. Measure 38: Treble clef has a quarter rest, bass clef has a half note F#2. Measure 39: Treble clef has a quarter rest, bass clef has a half note F#2. Measure 40: Treble clef has a quarter rest, bass clef has a half note F#2. Measure 41: Treble clef has a quarter rest, bass clef has a half note F#2. Measure 42: Treble clef has a quarter rest, bass clef has a half note F#2. Measure 43: Treble clef has a quarter rest, bass clef has a half note F#2.

dysneymidi - stayawak

Bass

♩ = 75,000000 ♩ = 67,000000

3 **16**

4/4

24

32

38

Vocals

dysneymidi - stayawak

$\text{♩} = 75,000000$ $\text{♩} = 67,000000$ $\text{♩} = 70,000000$ $\text{♩} = 70,000000$ $\text{♩} = 60,000000$ $\text{♩} = 60,000000$ $\text{♩} = 60,000000$

3 **17**

26

34

40

Strings

dysneymidi - stayawak

♩ = 75,000000 ♩ = 67,09980002300

3 17

26

34

40