

Edwin Van Veldhoven - Stil Verwijt (That Look In Your Eyes)

♩ = 90,000092

Synth Voice

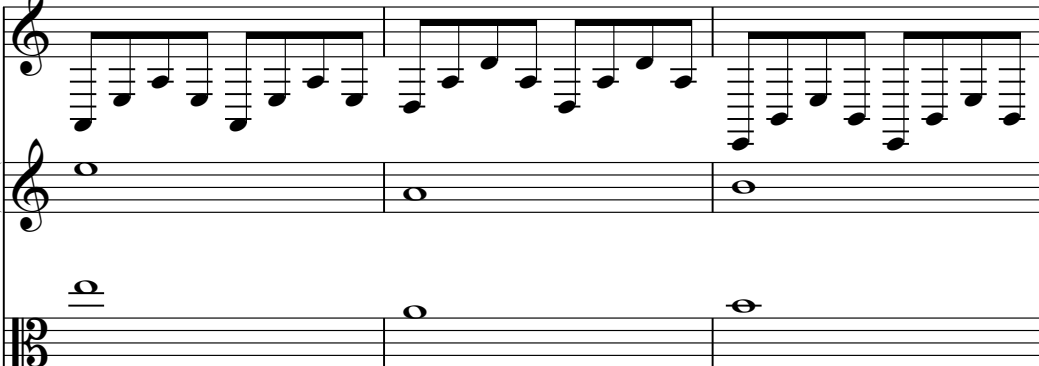


4

Synth Voice

SynthStrings 1

String Ens. 1




7

Glockenspiel

Synth Voice

SynthStrings 1

String Ens. 1



8

Flute

Glockenspiel

Ac. guitar (steel)

Synth Voice



10

Flute

Ac. guitar (steel)

Synth Voice



12

Flute

Ac. guitar (steel)

Synth Voice

14

Flute

Ac. guitar (steel)

Synth Voice



16

Flute

Ac. guitar (steel)

Synth Voice



18

Flute

Ac. guitar (steel)

Synth Voice

20

Flute

Ac. guitar (steel)

Fretless Bass

Synth Voice

SynthStrings 1

String Ens. 1



21

Flute

Ac. guitar (steel)

Fretless Bass

Synth Voice

SynthStrings 1

String Ens. 1

22

Flute

Ac. guitar (steel)

Fretless Bass

Synth Voice

SynthStrings 1

String Ens. 1



23

Flute

Ac. guitar (steel)

Fretless Bass

Synth Voice

SynthStrings 1

String Ens. 1

24

Flute

Ac. guitar (steel)

Fretless Bass

Synth Voice

SynthStrings 1

String Ens. 1

Detailed description: This block contains the musical notation for measures 24 and 25. The score is arranged in six staves. The top staff is for Flute, the second for Acoustic guitar (steel), the third for Fretless Bass, the fourth for Synth Voice, the fifth for SynthStrings 1, and the sixth for String Ensemble 1. The key signature has one sharp (F#) and the time signature is 3/8. Measure 24 shows the Flute playing a melodic line, the Acoustic guitar playing a complex chordal accompaniment, and the Fretless Bass providing a simple bass line. The Synth Voice, SynthStrings 1, and String Ensemble 1 parts are mostly sustained notes or chords.



25

Flute

Ac. guitar (steel)

Fretless Bass

Synth Voice

SynthStrings 1

String Ens. 1

Detailed description: This block contains the musical notation for measures 25 and 26. The score is arranged in six staves. The top staff is for Flute, the second for Acoustic guitar (steel), the third for Fretless Bass, the fourth for Synth Voice, the fifth for SynthStrings 1, and the sixth for String Ensemble 1. The key signature has one sharp (F#) and the time signature is 3/8. Measure 25 shows the Flute playing a melodic line, the Acoustic guitar playing a complex chordal accompaniment, and the Fretless Bass providing a simple bass line. The Synth Voice, SynthStrings 1, and String Ensemble 1 parts are mostly sustained notes or chords.

27

Flute

Ac. guitar (steel)

Fretless Bass

Synth Voice

SynthStrings 1

String Ens. 1

Detailed description: This system of musical notation covers measures 27 and 28. The Flute part features a melodic line with eighth and sixteenth notes. The Acoustic guitar (steel) part provides a rhythmic accompaniment with chords and single notes. The Fretless Bass part has a simple bass line. The Synth Voice part consists of a steady eighth-note pattern. SynthStrings 1 and String Ens. 1 provide harmonic support with sustained notes and chords.



29

Flute

Ac. guitar (steel)

Fretless Bass

Synth Voice

SynthStrings 1

String Ens. 1

Detailed description: This system of musical notation covers measures 29, 30, 31, and 32. The Flute part has a melodic line with some rests. The Acoustic guitar (steel) part continues with a complex accompaniment. The Fretless Bass part has a steady bass line. The Synth Voice part continues with a steady eighth-note pattern. SynthStrings 1 and String Ens. 1 provide harmonic support with sustained notes and chords.

31

Flute

Ac. guitar (steel)

Fretless Bass

Synth Voice

SynthStrings 1

String Ens. 1



33

Flute

Ac. guitar (steel)

Fretless Bass

Synth Voice

SynthStrings 1

String Ens. 1

35

Flute

Ac. guitar (steel)

Fretless Bass

Synth Voice

SynthStrings 1

String Ens. 1



37

Flute

Ac. guitar (steel)

Fretless Bass

Synth Voice

SynthStrings 1

String Ens. 1

39

Flute

Ac. guitar (steel)

Fretless Bass

Synth Voice

SynthStrings 1

String Ens. 1



41

Flute

Ac. guitar (steel)

Fretless Bass

Synth Voice

SynthStrings 1

String Ens. 1

43

Flute

Ac. guitar (steel)

Fretless Bass

Synth Voice

SynthStrings 1

String Ens. 1



45

Flute

Ac. guitar (steel)

Fretless Bass

Synth Voice

SynthStrings 1

String Ens. 1

47

Flute

Ac. guitar (steel)

Fretless Bass

Synth Voice

SynthStrings 1

String Ens. 1



49

Flute

Ac. guitar (steel)

Fretless Bass

Synth Voice

SynthStrings 1

String Ens. 1

51

Flute

Ac. guitar (steel)

Fretless Bass

Synth Voice

SynthStrings 1

String Ens. 1



53

Flute

Ac. guitar (steel)

Fretless Bass

Synth Voice

SynthStrings 1

String Ens. 1

55

Flute

Ac. guitar (steel)

Fretless Bass

Synth Voice

SynthStrings 1

String Ens. 1



57

Flute

Ac. guitar (steel)

Fretless Bass

Synth Voice

SynthStrings 1

String Ens. 1

60

Flute

Synth Voice



63

Flute

Synth Voice



65

Synth Voice

Edwin Van Veldhoven - Stil Verwijt (That Look In Your Eyes)

Flute

♩ = 90,000092

7

11

15

20

24

28

33

37

41

45

V.S.

2

Flute

50



54



59



62





Edwin Van Veldhoven - Stil Verwijt (That Look In Your Eyes)

Ac. guitar (steel)

♩ = 90,000092

7

10

13

17

21

23

25

28

31

34

V.S.

Ac. guitar (steel)

37

40

43

46

49

51

54

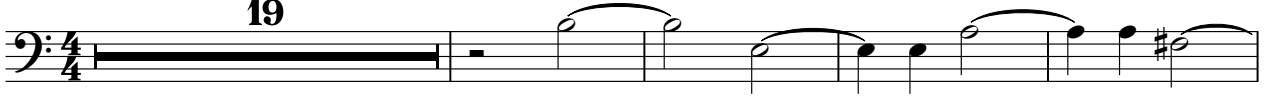
56

Fretless Bass

Edwin Van Veldhoven - Stil Verwijt (That Look In Your Eyes)

♩ = 90,000092

19



24



30



36



43



50



55

10



Edwin Van Veldhoven - Stil Verwijt (That Look In Your Eyes)

Synth Voice

♩ = 90,000092

5

9

13

17

20

24

28

32

36

V.S.

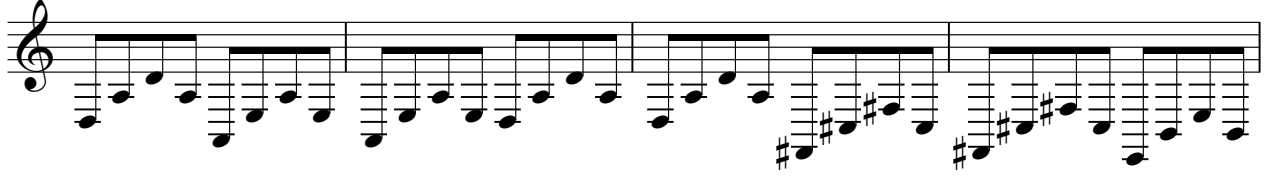
Detailed description: The image shows a musical score for a synth voice part. It consists of ten staves of music, each starting with a measure number (5, 9, 13, 17, 20, 24, 28, 32, 36). The music is written in a 4/4 time signature. The first staff begins with a whole rest, followed by a series of eighth notes. The subsequent staves contain a continuous melodic line with various intervals, including some chromatic passages and accidentals (sharps and naturals). The notation is clear and legible, with a consistent rhythmic pattern throughout.

Synth Voice

40



44



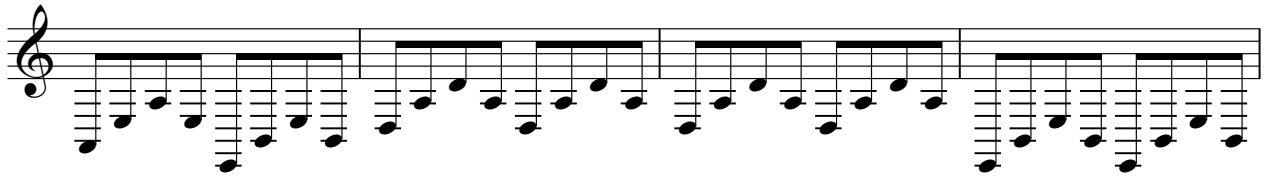
48



52



56



60



64



SynthStrings 1

Edwin Van Veldhoven - Stil Verwijt (That Look In Your Eyes)

♩ = 90,000092

3 12

21

28

35

42

49

54

10

Edwin Van Veldhoven - Stil Verwijt (That Look In Your Eyes)

String Ens. 1

♩ = 90,000092

3

12

21

28

35

42

49

52

55

10