

Presley - Are You Lonesome Tonight 2

♩ = 75,999969

Panpipes

Percussion

DO NOT REPRODUCE OR TRANSMIT IN ANY FORM OR BY ANY MEANS, ELECTRONIC OR MECHANICAL, INCLUDING PHOTOCOPYING, RECORDING, OR BY ANY INFORMATION STORAGE AND RETRIEVAL SYSTEM.

Kora

Acoustic Bass

Synth Voice

Synth Voice

4

Pan.

Perc.

Kora

A. Bass

Syn. Voice

Are you lonesome

(C) 1994 Tune 1000 Corporation ; Bourne Music/Cromwell Music/Redwood Music
 (C) 1994 Tune 1000 Corporation ; Bourne Music/Cromwell Music/Redwood Music

7

Pan.

Perc.

Kora

A. Bass

Syn. Voice

some tonight? Doyou miss me to

10

Pan.

Perc.

Kora

A. Bass

Syn. Voice

night? Areyou sorry we drift ed a part?

13

Pan.

Perc.

Kora

A. Bass

Syn. Voice

Does your mem o ry

16

Pan.

Perc.

Kora

A. Bass

Syn. Voice

stray to a bright sunnily, which kissed

19



Pan.

Perc.

Kora

A. Bass

Syn. Voice

you and called you

Detailed description: This system contains measures 19 and 20. The Pan part has a treble clef and a triplet of eighth notes in measure 19. The Perc part has a drum set icon and a steady eighth-note rhythm. The Kora part has a treble clef and complex polyrhythmic patterns. The A. Bass part has a bass clef and a simple bass line. The Syn. Voice part has a treble clef and a long, sustained note across both measures. The lyrics 'you and called you' are written above the Kora staff.

21



Pan.

Perc.

Kora

A. Bass

Syn. Voice

heart? Do the hairs in your

Detailed description: This system contains measures 21 and 22. The Pan part has a treble clef and a few notes in measure 22. The Perc part has a drum set icon and a steady eighth-note rhythm. The Kora part has a treble clef and complex polyrhythmic patterns. The A. Bass part has a bass clef and a simple bass line. The Syn. Voice part has a treble clef and a long, sustained note across both measures. The lyrics 'heart? Do the hairs in your' are written above the Kora staff.

24

Pan.

Perc.

Kora

A. Bass

Syn. Voice

par lor seememp ty and bare? Dyougaze

27

Pan.

Perc.

Kora

A. Bass

Syn. Voice

at your door step and pic ture me there?

30

Pan.

Perc.

Kora

A. Bass

Syn. Voice

Is your heart filled with pain? Shall I

33

Pan.

Perc.

Kora

A. Bass

Syn. Voice

come back a gain? Tell me, dear, are you lone

36

Pan.

Perc.

some to night?

Kora

A. Bass

Syn. Voice

Syn. Voice

39

Pan.

Perc.

I wonder if you'll come tonight. You know,

Kora

A. Bass

Syn. Voice

Syn. Voice

42

Pan.

Perc.

Kora

A. Bass

Syn. Voice

Syn. Voice

someonesaidthat theworld'sstage and eachmust play a part.

44

Pan.

Perc.

Kora

A. Bass

Syn. Voice

Syn. Voice

Faithandplayinlove, withou as nyheart. Actoncwasocnet,

47

Pan.

Perc.

Kora

A. Bass

Syn. Voice

Syn. Voice

I loved you at first lance. You ready you fines

49

Pan.

Perc.

Kora

A. Bass

Syn. Voice

Syn. Voice

solever ly and newisseal cue. Theame actwo.

52

Pan.

Perc.

Kora

A. Bass

Syn. Voice

Syn. Voice

Isimbi change, you act edstrang Andwhy? I'venev edknow.

54

Pan.

Perc.

Kora

A. Bass

Syn. Voice

Syn. Voice

Hon ey, you

56

Pan.

Perc.

Kora

A. Bass

Syn. Voice

Syn. Voice

were ly in' when you said you love me, and I had no

58

Pan.

Perc.

Kora

A. Bass

Syn. Voice

Syn. Voice

cause to love you. But father go on the anguishes,

61

Pan.

Perc.

Kora

A. Bass

Syn. Voice

Syn. Voice

and you living with you. Not a tag is bare,

64

Pan.

Perc.

Kora

A. Bass

Syn. Voice

Syn. Voice

and I'm stand ingthere with emp

66

Pan.

Perc.

Kora

A. Bass

Syn. Voice

Syn. Voice

ti ness all round. And if you wontomback to me,

68

Pan.

Perc.

Kora

A. Bass

Syn. Voice

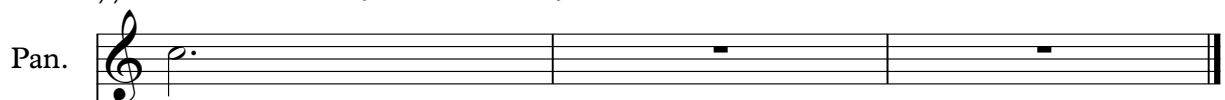
Syn. Voice

they bring the town. Is your

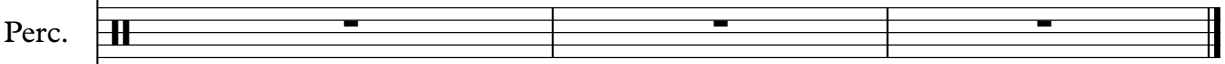
77

♩ = 56,999977 ♩ = 48,999992

Pan.



Perc.

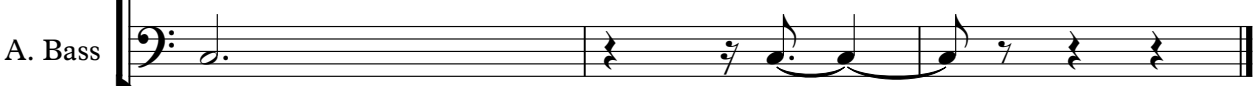


night?

Kora



A. Bass



Syn. Voice



Syn. Voice



Presley - Are You Lonesome Tonight 2

Panpipes

♩ = 75,999969

5

10

16

23

29

35

41

45

49

52

(C) 1994 Tune 1000 Corporation ; Bourne Music/Cromwell Music/Redwood Music
(C) 1994 Tune 1000 Corporation ; Bourne Music/Cromwell Music/Redwood Music

Panpipes

55

59

63

67

72

$\text{♩} = 59,999999992$ $\text{♩} = 58,9999997$

Presley - Are You Lonesome Tonight 2

Percussion

♩ = 75,999969

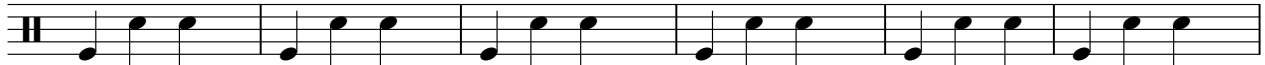
2



Are you lonesome tonight?

Are you lonesome tonight? You

9



miss me to night? Are you sorry drifted a part? Does

15



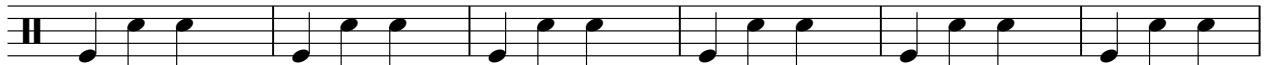
memory stray to a bright Sunday, kissed you and called you sweet

21



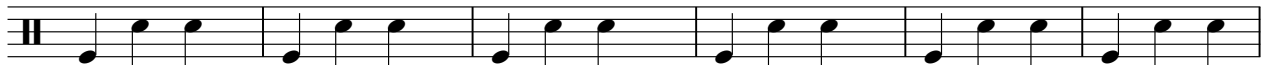
heart? Do chairs in your parlor seem empty and bare? Do you gaze

27



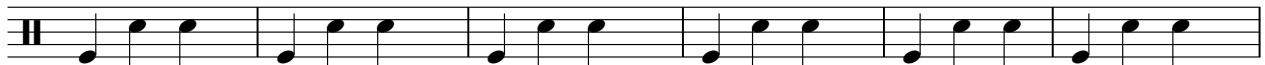
at your door step and picture there? Your heart filled with pain? Shall

33



come back a gain? Tell, dear, are you lonesome to night?

39



Wonder if you're lonesome tonight. Know, some hearts are made to be broken. Finally,

45



with heart. A woman; I'd give. Years she and mine due. That's

52



see you change. And you own. How you were when you were, and

58



caught with soldiers, holding with Nellie, and here

(C) 1994 Tune 1000 Corporation ; Bourne Music/Cromwell Music/Redwood Music
(C) 1994 Tune 1000 Corporation ; Bourne Music/Cromwell Music/Redwood Music

V.S.

2

Percussion

65

withmp nesaund. Anyoone, theying thain. Isyour

71

heart filledwith pain? ShallI comeback a gain?

74

♩ = 79,000088992 ♩ = 56,9998799992
3

Tefndear, aryone some to night?

Presley - Are You Lonesome Tonight 2

Kora

♩ = 75,999969

6

10

14

18

21

24

28

32

36

(C) 1994 Tune 1000 Corporation ; Bourne Music/Cromwell Music/Redwood Music
(C) 1994 Tune 1000 Corporation ; Bourne Music/Cromwell Music/Redwood Music

V.S.

40

44

48

51

54

57

61

65

69

72

Kora

75

$\bullet = 71,999999$ $\bullet = 58,999997$

Musical score for Kora, measure 75. The score is written on a single staff with a treble clef. It begins with a quarter rest, followed by a quarter note G4 with a sharp sign. The next two measures contain chords: a G4-B4-D5 triad and a G4-B4-D5 triad with a sharp sign. The fourth measure contains a G4-B4-D5 triad with a sharp sign. The fifth measure is a whole rest. The sixth measure contains a G4-B4-D5 triad with a sharp sign. The seventh measure contains a G4-B4-D5 triad with a sharp sign. The eighth measure contains a G4-B4-D5 triad with a sharp sign. The piece ends with a double bar line.

Presley - Are You Lonesome Tonight 2

Acoustic Bass

♩ = 75,999969



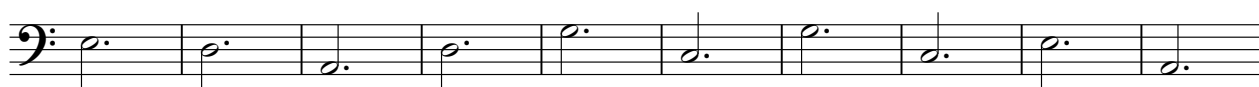
11



22



32



42



52

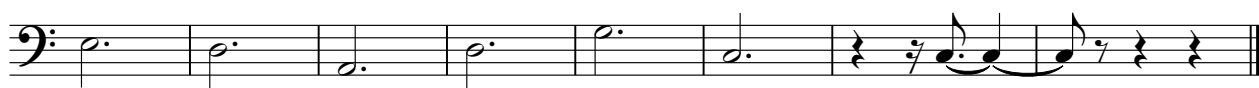


62



72

♩ = 75,999969 2 = 54,999969 2



(C) 1994 Tune 1000 Corporation ; Bourne Music/Cromwell Music/Redwood Music
(C) 1994 Tune 1000 Corporation ; Bourne Music/Cromwell Music/Redwood Music

Presley - Are You Lonesome Tonight 2

Synth Voice

♩ = 75,999969

2

3

3

11

22

33

3

41

48

55

62

69

3

75

3

♩ = 56,999977

♩ = 48,999992

(C) 1994 Tune 1000 Corporation ; Bourne Music/Cromwell Music/Redwood Music
(C) 1994 Tune 1000 Corporation ; Bourne Music/Cromwell Music/Redwood Music

Presley - Are You Lonesome Tonight 2
Synth Voice

♩ = 75,999969 **37**

43

50

57

64

70 **5** ♩ = 75,999969 ♩ = 56,999969

(C) 1994 Tune 1000 Corporation ; Bourne Music/Cromwell Music/Redwood Music
(C) 1994 Tune 1000 Corporation ; Bourne Music/Cromwell Music/Redwood Music