

Evangelica - Oficina G3

0.0"
1.1,00
mafezoli@prover.com.br

♩ = 104,999924

melody

drum

gt. onerdriven

gt. overdriven

bass

E
B
G
D
A
B
A
A

2 2 0 2 0 4 4 2 2 0 2 0 4

3

drum

gt. overdriven

bass

T
A
B

4 0 4 0 4 2 0 2 2 2 0 2 0 4 4 2 2 0 2 0 4

5

drum

gt. overdriven

bass

T
A
B

4 2 2 0 2 0 4 4 2 2 0 2 0 4

7

drum

gt. onerdriven

gt. overdriven

bass

Detailed description: This system covers measures 7 and 8. The drum part features a consistent pattern of eighth notes with 'x' marks above them, indicating muffled hits. The guitar (gt. onerdriven) has a rest in measure 7 and enters in measure 8 with a melodic line. The guitar (gt. overdriven) part is a six-string tab with fret numbers 4, 0, 4, 0, 4, 2, 0, 2, 2, 2, 0, 2, 0, 4 in measure 7 and 4, 2, 2, 0, 2, 0, 4 in measure 8. The bass part plays a simple eighth-note line.

9

drum

gt. onerdriven

gt. overdriven

bass

Detailed description: This system covers measures 9 and 10. The drum part has a more complex pattern with accents and a snare roll in measure 9. The guitar (gt. onerdriven) plays a melodic line with a snare roll in measure 9. The guitar (gt. overdriven) tab shows fret numbers 4, 0, 4, 0, 4, 2, 0, 2, 4, 4, 4, 4, 4, 4, 4, 4, 2, 2, 2, 2 in measure 9 and 4, 4, 4, 4, 4, 4, 2, 2, 2, 2 in measure 10. The bass part continues with a steady eighth-note line.

11

drum

gt. onerdriven

gt. overdriven

bass

Detailed description: This system covers measures 11 and 12. The drum part features a pattern of eighth notes with accents. The guitar (gt. onerdriven) has a melodic line with accents. The guitar (gt. overdriven) tab shows fret numbers 4, 4, 2, 2, 4, 0, 0, 0, 0, 0, 5, 5 in measure 11 and 0, 0, 0, 0, 0, 5, 5 in measure 12. The bass part continues with a steady eighth-note line.

13

drum

gt. onerdriven

gt. overdriven

bass

15

drum

gt. onerdriven

gt. overdriven

bass

17

drum

gt. onerdriven

gt. overdriven

bass

19

melody

drum

gt. overdriven

gt. overdriven

bass

0 0 0

T

A 2 2 2

B 4 2 4 4 4 2

21

melody

drum

gt. overdriven

gt. overdriven

bass

2 2 2 2 2 3 2

T

A 4 4 0 0 0 0 0 0 0 2 0

B 4 2

24

melody

drum

gt. overdriven

gt. overdriven

bass

2 0 2 0 2 0 2 0 0 2 0 4 2

T

A 2 2 2 0 2 0 0 2 0 0 2

B 0 0 0 0 2 0 0 0 0 0 2

26

melody

drum

gt. overdriven

bass

Tablature for measures 26-27:

T	0	0	0	0	0
A	4	4	4	4	2
B	2	2	2	2	2

28

melody

drum

gt. overdriven

bass

Tablature for measures 28-29:

T	0	1	1	1	1	4
A	2	2	2	3	2	2
B		2	2	7	2	2

30

melody

drum

gt. overdriven

bass

Tablature for measures 30-31:

T						2
A		4	4	4	2	6
B	4	2	2	2	2	5

32

melody

drum

gt. overdriven

bass

T 2 2 2 2 2 2 0 2
A 0 0 0 0 0 0 0 0
B 5 5 5 5 5 5 0 0

34

melody

drum

gt. overdriven

bass

T 2 2 2 2 2 2 0
A 0 2 0 2 2 2 4
B 0 0 0 0 0 0 2

36

melody

drum

gt. overdriven

bass

T 0 0 0 0 0 0
A 4 4 4 2 4 2
B 2 2 2 2 2 2 0 0

38

melody

drum

gt. overdriven

bass

40

melody

drum

gt. overdriven

bass

41

melody

drum

gt. overdriven

bass

42

melody

drum

gt. overdriven

bass

43

melody

drum

gt. overdriven

bass

44

melody

drum

gt. overdriven

bass

45

melody

drum

gt. overdriven

bass

46

melody

drum

gt. overdriven

bass

47

melody

drum

gt. overdriven

bass

48

melody

drum

gt. overdriven

bass

50

drum

gt. overdriven

gt. overdriven

bass

53

drum

gt. overdriven

bass

55

drum

gt. overdriven

bass

57

drum

gt. onerdriven

bass

Detailed description: This system covers measures 57 and 58. The drum part features a consistent pattern of quarter notes on the snare and bass drums. The guitar part starts with a melodic line in measure 57, including a triplet of eighth notes, and continues with a sustained note in measure 58. The bass part provides a steady eighth-note accompaniment.

59

drum

gt. onerdriven

bass

Detailed description: This system covers measures 59, 60, and 61. The drum part maintains the same rhythmic pattern. The guitar part features a melodic line with a triplet of eighth notes in measure 59 and continues with a sustained note in measure 60. The bass part continues with eighth-note accompaniment.

62

drum

gt. onerdriven

bass

Detailed description: This system covers measures 62 and 63. The drum part continues with the established pattern. The guitar part has a melodic line with a sustained note in measure 62 and continues in measure 63. The bass part maintains the eighth-note accompaniment.

64

drum

gt. onerdriven

bass

Detailed description: This system covers measures 64 and 65. The drum part continues with the established pattern. The guitar part features a melodic line with a triplet of eighth notes in measure 64 and continues with a sustained note in measure 65. The bass part maintains the eighth-note accompaniment.

66

drum

gt. overdriven

bass

This system covers measures 66 and 67. The drum part features a consistent pattern of quarter notes on the snare and bass drums. The guitar part (gt. overdriven) starts with a half note G4, followed by a quarter note A4, and then a series of eighth notes: B4, C5, B4, A4, G4, F4, E4, D4. There are two triplet markings over the eighth notes in the second measure. The bass part consists of a steady eighth-note line: G2, A2, B2, C3, D3, E3, F3, G3.

68

drum

gt. overdriven

gt. overdriven

bass

This system covers measures 68 and 69. The drum part continues with the same pattern. The guitar part (gt. overdriven) features a melodic line: G4, A4, B4, C5, B4, A4, G4, F4, E4, D4, C4, B3, A3, G3, F3, E3, D3. There is a triplet marking over the eighth notes in the second measure. The guitar part (gt. overdriven) shows a tab for the first two measures: T (treble), A (4th), B (5th). In the second measure, there is a 2/5/5 triplet. The bass part continues with the eighth-note line: G2, A2, B2, C3, D3, E3, F3, G3.

70

drum

gt. overdriven

gt. overdriven

bass

This system covers measures 70 and 71. The drum part continues with the same pattern. The guitar part (gt. overdriven) features a melodic line: G4, A4, B4, C5, B4, A4, G4, F4, E4, D4, C4, B3, A3, G3, F3, E3, D3. There is a triplet marking over the eighth notes in the first measure. The guitar part (gt. overdriven) shows a tab for the first two measures: T (treble), A (4th), B (5th). In the first measure, there is a 2/0/5 triplet. In the second measure, there is a 0/0/2 triplet. The bass part continues with the eighth-note line: G2, A2, B2, C3, D3, E3, F3, G3.

72

drum

gt. overdriven

T	0	1	1	1	1	
A	2	2	2	3	2	
B		2	2	7	7	4 2

bass

74

drum

gt. overdriven

T						0
A						3
B	4	4	4	2	4	2

bass

76

drum

gt. overdriven

T	0	0	0	0	0	0	0
A	2	2	2	2	2	2	2
B	0	0		0		0	2

bass

78

drum

gt. onerdriven

gt. overdriven

T													2		2		2	2	2	
A	4	4	4	4	4								0		0		0	0	0	
B	2	2	2	2	2	2	2	4							5					5

bass

81

drum

gt. onerdriven

gt. overdriven

T																			2	2
A	0		0						0	2			0	2	0	2	2	2	0	2
B									0	0			0	0	0	0	0	2		2

bass

83

drum

gt. onerdriven

gt. overdriven

T	2	2																		
A	0	2	0	2	2	4			4	4	4	4	4	4						
B						8			2	2	2	2	2	2	2					
						7			2	2	2	2	2	2	2					

bass

85

drum

gt. onerdriven

gt. overdriven

bass

Detailed description: This system covers measures 85 and 86. The drum part features a consistent eighth-note pattern with occasional accents. The guitar (gt. onerdriven) plays a melodic line with slurs and accents. The guitar (gt. overdriven) part shows fret numbers for strings T, A, and B. The bass line consists of a steady eighth-note accompaniment.

87

melody

drum

gt. onerdriven

gt. overdriven

bass

Detailed description: This system covers measures 87 and 88. A new melody line is introduced in the top staff. The drum part continues with a similar pattern. The guitar (gt. onerdriven) has a melodic line with a double bar line in measure 88. The guitar (gt. overdriven) fret numbers are shown for strings T, A, and B. The bass line continues with eighth notes.

89

melody

drum

gt. overdriven

bass

Detailed description: This system covers measures 89 and 90. The melody line continues with various note values and rests. The drum part maintains the eighth-note pattern. The guitar (gt. overdriven) fret numbers are shown for strings T, A, and B. The bass line continues with eighth notes.

92

melody

drum

gt. overdriven

bass

94

melody

drum

gt. overdriven

bass

96

melody

drum

gt. overdriven

bass

98

melody

drum

gt. overdriven

bass

100

melody

drum

gt. overdriven

bass

102

melody

drum

gt. overdriven

bass

104

melody

drum

gt. overdriven

bass

106

melody

drum

gt. overdriven

bass

108

melody

drum

gt. overdriven

bass

109

melody

drum

gt. overdriven

bass

110

melody

drum

gt. overdriven

bass

111

melody

drum

gt. overdriven

bass

112

melody

drum

gt. overdriven

bass

113

melody

drum

gt. overdriven

bass

114

melody

drum

gt. overdriven

bass

115

melody

drum

gt. overdriven

bass

116

melody

drum

gt. overdriven

bass

118

drum

gt. overdriven

bass

120

drum

gt. overdriven

bass

123

drum

gt. onerdriven

gt. overdriven

bass

The guitar tab for the 'gt. overdriven' part shows the following fret numbers: 4 0 4 0 4 2 0 2 2 2 0 2 0 4 4 4.

125

drum

gt. onerdriven

bass

Evangelica - Oficina G3

melody

♩ = 104,999924

18

21

25

29

33

37

41

44

47

49

37

87



91



95



99



103



107



111



114



116



9

Evangelica - Oficina G3

drum

♩ = 104,999924

Measures 1-4 of the drum part. The staff is in 4/4 time. It begins with a double bar line and a 4/4 time signature. The first measure contains a snare drum hit with an accent, followed by a series of eighth notes. The subsequent measures continue with eighth notes and snare hits, some with accents.

Measures 5-8 of the drum part. The pattern of eighth notes and snare hits continues, with accents on specific notes.

Measures 9-12 of the drum part. This section introduces a more complex pattern with triplets and sixteenth notes, along with snare hits.

Measures 13-16 of the drum part. The complex rhythmic pattern of triplets and sixteenth notes continues.

Measures 17-20 of the drum part. The pattern continues, featuring a snare hit with an accent in measure 19.

Measures 21-23 of the drum part. The complex rhythmic pattern continues.

Measures 24-27 of the drum part. The complex rhythmic pattern continues.

Measures 28-31 of the drum part. The pattern continues, featuring a snare hit with an accent in measure 28.

Measures 32-35 of the drum part. The complex rhythmic pattern continues.

Measures 36-39 of the drum part. The pattern continues, featuring a snare hit with an accent in measure 38.

V.S.

39

41

43

45

47

49

53

58

63

68

72

Musical notation for drum part, measures 72-75. The notation is on a single staff with a double bar line at the beginning. It features a series of eighth notes and quarter notes, with some notes marked with asterisks and a bracket. A 7-measure rest is present in measure 74.

76

Musical notation for drum part, measures 76-79. The notation is on a single staff with a double bar line at the beginning. It features a series of eighth notes and quarter notes, with some notes marked with asterisks and a bracket. A 7-measure rest is present in measure 78.

80

Musical notation for drum part, measures 80-83. The notation is on a single staff with a double bar line at the beginning. It features a series of eighth notes and quarter notes, with some notes marked with asterisks and a bracket. A 7-measure rest is present in measure 82.

84

Musical notation for drum part, measures 84-86. The notation is on a single staff with a double bar line at the beginning. It features a series of eighth notes and quarter notes, with some notes marked with asterisks and a bracket. A 7-measure rest is present in measure 85.

87

Musical notation for drum part, measures 87-90. The notation is on a single staff with a double bar line at the beginning. It features a series of eighth notes and quarter notes, with some notes marked with asterisks and a bracket. A 7-measure rest is present in measure 89.

90

Musical notation for drum part, measures 90-93. The notation is on a single staff with a double bar line at the beginning. It features a series of eighth notes and quarter notes, with some notes marked with asterisks and a bracket. A 7-measure rest is present in measure 92.

94

Musical notation for drum part, measures 94-97. The notation is on a single staff with a double bar line at the beginning. It features a series of eighth notes and quarter notes, with some notes marked with asterisks and a bracket. A 7-measure rest is present in measure 96.

98

Musical notation for drum part, measures 98-101. The notation is on a single staff with a double bar line at the beginning. It features a series of eighth notes and quarter notes, with some notes marked with asterisks and a bracket. A 7-measure rest is present in measure 100.

102

Musical notation for drum part, measures 102-105. The notation is on a single staff with a double bar line at the beginning. It features a series of eighth notes and quarter notes, with some notes marked with asterisks and a bracket. A 7-measure rest is present in measure 104.

106

Musical notation for drum part, measures 106-109. The notation is on a single staff with a double bar line at the beginning. It features a series of eighth notes and quarter notes, with some notes marked with asterisks and a bracket. A 7-measure rest is present in measure 108.

108

Musical notation for drum part 108, featuring a series of eighth notes with upward-pointing stems and 'x' marks above the staff.

110

Musical notation for drum part 110, featuring a series of eighth notes with upward-pointing stems and 'x' marks above the staff.

112

Musical notation for drum part 112, featuring a series of eighth notes with upward-pointing stems and 'x' marks above the staff.

114

Musical notation for drum part 114, featuring a series of eighth notes with upward-pointing stems and 'x' marks above the staff.

116

Musical notation for drum part 116, featuring a series of eighth notes with upward-pointing stems and 'x' marks above the staff.

119

Musical notation for drum part 119, featuring a series of eighth notes with upward-pointing stems and 'x' marks above the staff.

123

Musical notation for drum part 123, featuring a series of eighth notes with upward-pointing stems and 'x' marks above the staff.

125

Musical notation for drum part 125, featuring a series of eighth notes with upward-pointing stems and 'x' marks above the staff.

♩ = 104,999924

7

11

15

19

30

52

57

61

64

67

70

V.S.

Detailed description: This is a guitar score for the piece 'Evangelica' by Oficina G3. It is written in 4/4 time with a tempo of 104.999924. The score consists of ten staves of music. The first staff starts with a measure rest of 7 measures. The music features a variety of rhythmic patterns, including eighth and sixteenth notes, often grouped with slurs. There are several triplet markings (indicated by a '3' over a group of notes). A significant feature is a 30-measure rest starting at measure 19. The key signature has one sharp (F#). The score concludes with a 'V.S.' (Vivace) marking.

2

gt. overdriven

73

77

82

86

89

35

125

2 37

gt.overdriven

T	0	0	0	0	0	0	0	0	0	0	0	0	0	0	0	0	0	0	0
A	4	2	2	4	2	2	2	2	2	2	3	2	2	4	4	4	4	4	4
B	2	2	2	0	0	0	0	0	0	2	2	7	2	2	2	7	7	2	2

40

T	4	4	4	4	4	4	0	0	0	0	0	0	0	0	0	0	0	0	0
A	4	4	4	4	4	4	4	4	4	4	4	4	4	4	4	4	4	4	4
B	2	2	2	2	2	2	2	2	2	2	2	2	2	2	2	2	2	2	2

43

T	0	2	2	0	0	0	0	0	0	0	0	0	0	0	0	0	0	0	0
A	0	0	0	2	2	2	4	4	4	4	4	4	4	4	4	4	4	4	4
B	3	0	0	0	0	0	2	4	2	2	2	2	2	2	2	2	2	2	2

46

T	0	0	0	0	2	2	2	2	2	2	2	2	2	2	2	2	2	2	2
A	4	4	4	4	2	2	2	2	2	2	2	2	2	2	2	2	2	2	2
B	2	2	2	2	0	0	0	0	0	0	0	0	0	0	0	0	0	0	0

49

T	0	0	3	0	0	0	0	0	0	0	0	0	0	0	0	0	0	0	0
A	2	2	2	2	2	2	2	4	2	2	2	2	2	2	2	2	2	2	2
B	0	0	0	0	0	0	0	2	0	0	0	0	0	0	0	0	0	0	0

17

69

T	2	2	2	2	2	2	2	2	2	0	0	0	0	0	0	0	0	0	0
A	6	6	6	6	6	6	6	6	6	6	6	6	6	6	6	6	6	6	6
B	5	5	5	5	5	5	5	5	5	5	5	5	5	5	5	5	5	5	5

73

T	0	0	0	0	0	0	0	0	0	0	0	0	0	0	0	0	0	0	0
A	4	4	4	4	4	4	4	4	4	4	4	4	4	4	4	4	4	4	4
B	2	2	2	2	2	2	2	2	2	2	2	2	2	2	2	2	2	2	2

77

T	0	0	0	0	0	0	0	0	0	0	0	0	0	0	0	0	0	0	0
A	2	2	2	4	4	4	4	4	4	4	4	4	4	4	4	4	4	4	4
B	0	0	0	2	2	2	2	2	2	2	2	2	2	2	2	2	2	2	2

80

T	2	2	2	2	2	2	2	2	2	2	2	2	2	2	2	2	2	2	2
A	0	0	0	0	0	0	0	0	0	0	0	0	0	0	0	0	0	0	0
B	5	5	5	5	5	5	5	5	5	5	5	5	5	5	5	5	5	5	5

83

T	2	2	2	2	4	4	4	4	4	4	4	4	4	4	4	4	4	4	4
A	0	0	0	0	8	8	8	8	8	8	8	8	8	8	8	8	8	8	8
B	2	2	2	2	7	7	7	7	7	7	7	7	7	7	7	7	7	7	7

T	0	0	0	0	0	0	0	0	0	0	0
A	2	2	2	2	2	2	2	2	4	4	4
B	0	0	0	0	0	0	0	0	2	2	2

89

T			2		2	2	2	2	0	3	2								
A	4	4	0	0	0	0	0	0	0	0	0	0	2	0	0	0	0	0	0
B	2	2	2	2	2	2	2	2	2	2	2	2	2	2	2	2	2	2	2

93

T	2	0	0	0	0	0	0	0	0	0	0	0	0	0	0	0	0	0	0
A	0	0	0	4	2	2	2	2	2	2	2	4	2	2	1	1	1	1	1
B	0	0	0	2	2	2	2	2	2	2	2	2	2	2	2	2	2	2	2

97

T																			
A										2	6	2	2	2	2	2	2	2	2
B	4	4	4	4	4	4	2	2	2	4	5	2	2	2	2	2	2	2	2

101

T	2	0	2	0	0	0	0	0	0	0	0	0	0	0	0	0	0	0	0
A	0	0	0	2	0	2	2	2	2	2	2	2	4	2	4	4	4	4	2
B	5	5	5	5	5	5	5	5	5	5	5	5	5	5	5	5	5	5	5

105

T	0	0	0	0	0	0	0	0	0	0	0	0	0	0	0	0	0	0	0
A	4	2	4	2	2	2	2	2	2	1	1	1	1	2	2	3	2	4	4
B	2	2	2	0	0	0	0	0	0	2	2	2	7	2	2	7	2	2	4

108

T																			
A	4	4	4	4	4	4	4	4	0	4	0	2	0	3	0	0	0	0	3
B	2	2	2	2	2	2	2	2	2	2	2	2	7	0	0	0	0	0	5

111

T	0	2	2	0	0	0	0	0	0	0	0	0	0	0	0	0	0	0	0
A	0	0	0	2	2	2	4	4	4	4	4	4	4	4	4	4	4	4	2
B	3	0	0	0	0	0	2	4	2	2	2	2	2	2	2	2	2	2	2

114

T	0	0	0	0	0	0	0	0	0	3	3	3	0	2	2	2	2	2	2
A	2	4	2	4	2	4	0	2	2	2	2	2	0	0	0	0	0	0	0
B	2	2	2	2	2	2	2	2	2	2	2	2	5	3	0	0	0	0	0

117

T	0	0	0	0	0	0	0	0	0	0	0	0	0	0	0	0	0	0	0
A	2	2	0	0	4	4	2	2	0	0	4	4	0	4	0	4	2	0	2
B	0	2	2	2	0	4	2	2	2	2	0	4	4	4	2	0	2	2	0

V.S.

4 120

gt.overdriven

A guitar tab for measure 120, consisting of three measures. The strings are labeled T, A, and B from top to bottom. The notes are: 4, 2, 2, 0, 2, 0, 4, 4, 2, 2, 0, 2, 0, 4, 4, 2, 2, 0, 2, 0, 4.

123

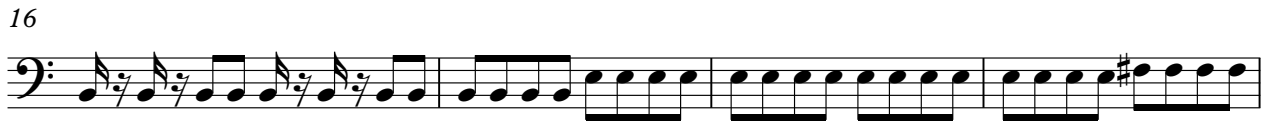
2

A guitar tab for measure 123, consisting of three measures. The strings are labeled T, A, and B from top to bottom. The notes are: 4, 0, 4, 0, 4, 2, 0, 2, 2, 2, 0, 2, 0, 4, 4, 4, 2, 2, 0, 2, 0, 4. The second measure contains a thick black bar across the strings, indicating a double bar line or a specific technique.

Evangelica - Oficina G3

bass

♩ = 104,999924



38



41



44



47



51



55



58



61



65



68



71



75



79



83



86



90



94



98



102



105



V.S.

108



111



114



117



120



124

