

Fran - NEVER WILL I MARRY

♩ = 72,000031

This system contains the first four measures of the score. The instruments and their parts are: Flute (rest), French Horns (melodic line with grace notes), Trumpets (melodic line with grace notes), Trombone 1 (rest), Trombone 2 (pedal point), Timpani (rest), Percussion (pedal point), Harp (rest), Keyboard (rest), Violins 1 (rest), Violins 2 (rest), Cello (pedal point), and Melody (melodic line with grace notes). The tempo is marked as ♩ = 72,000031.

5

This system contains measures 5 through 8. The instruments and their parts are: French Horns (melodic line with grace notes), Trombone 2 (melodic line with grace notes), Percussion (pedal point), Harp (melodic line with grace notes), Cello (pedal point), and Melody (melodic line with grace notes). The tempo is marked as ♩ = 72,000031.

9 $\text{♩} = 88,000023$ $\text{♩} = 80,000000$ $\text{♩} = 92,000130$

Flute

French Horns

Trombone 2

Percussion

$\text{♩} = 88,000023$ $\text{♩} = 80,000000$ $\text{♩} = 92,000130$

Violins 1

Violins 2

Cello

Melody



16 $\text{♩} = 80,000000$ $\text{♩} = 88,000023$ $\text{♩} = 82,000038$ $\text{♩} = 76,000069$ $\text{♩} = 96,000000$ $\text{♩} = 88,000023$ $\text{♩} = 92,000130$

Flute

French Horns

Trombone 2

$\text{♩} = 80,000000$ $\text{♩} = 88,000023$ $\text{♩} = 82,000038$ $\text{♩} = 76,000069$ $\text{♩} = 96,000000$ $\text{♩} = 88,000023$ $\text{♩} = 92,000130$

Violins 1

Violins 2

Cello

Melody

37

French Horns
Trumpets
Trombone 1
Timpani
Percussion
Keyboard
Violins 1
Violins 2
Cello
Melody

Detailed description: This musical score covers measures 37 and 38. The French Horns, Trumpets, and Trombone 1 parts feature rhythmic patterns of eighth and quarter notes. The Timpani part has a sixteenth-note roll in measure 37. The Keyboard part has a complex sixteenth-note figure with sixteenth-note triplets in measure 38. The Violins 1 and 2 parts play sustained chords. The Cello part has a simple eighth-note line. The Melody part has a few scattered notes.



39

French Horns
Trumpets
Timpani
Percussion
Keyboard
Violins 1
Cello
Melody

Detailed description: This musical score covers measures 39 and 40. The French Horns and Trumpets parts have rests in measure 39 and enter in measure 40. The Timpani part has a sixteenth-note roll in measure 39. The Keyboard part has a complex sixteenth-note figure with sixteenth-note triplets in measure 39. The Violins 1 part has a sixteenth-note line with a slur in measure 39. The Cello part has a simple eighth-note line. The Melody part has a few scattered notes.

41

French Horns
Trumpets
Timpani
Percussion
Keyboard
Violins 1
Cello
Melody

Detailed description: This musical score covers measures 41 and 42. The French Horns and Trumpets parts are relatively simple, with some rests. The Timpani part features a sixteenth-note pattern in measure 42, marked with a '6'. The Percussion part has a simple rhythmic pattern. The Keyboard part is highly active, featuring complex sixteenth-note patterns with triplets and sixteenth-note runs, marked with '6' and '3'. The Violins 1 part has a long note in measure 41 and a chord in measure 42. The Cello part has a long note in measure 41 and a chord in measure 42. The Melody part consists of a series of quarter notes.



43

$\text{♩} = 84,000084 \text{ } \text{♩} = 84,0000000069$

French Horns
Trumpets
Timpani
Percussion
Keyboard
Violins 1
Cello
Melody

Detailed description: This musical score covers measures 43, 44, and 45. The French Horns and Trumpets parts are similar to the previous section. The Timpani part has a sixteenth-note pattern in measure 43, marked with a '6'. The Percussion part has a simple rhythmic pattern. The Keyboard part features complex sixteenth-note patterns with triplets and sixteenth-note runs, marked with '6' and '3'. The Violins 1 part has a long note in measure 43 and a chord in measure 44. The Cello part has a long note in measure 43 and a chord in measure 44. The Melody part consists of a series of quarter notes. A tempo marking is present: $\text{♩} = 84,000084 \text{ } \text{♩} = 84,0000000069$.

46 ♩ = 88,000023 ♩ = 80,000000 ♩ = 88,000023 ♩ = 84,000023 ♩ = 84,000023 ♩ = 84,000023 ♩ = 84,000023 ♩ = 84,000023

Flute

French Horns

Trombone 2

Violins 1

Violins 2

Cello

Melody



53 ♩ = 84,000023

Flute

French Horns

Trumpets

Trombone 1

Trombone 2

Timpani

Harp

Violins 1

Violins 2

Cello

Melody

58 $\text{♩} = 84,000084$ $\text{♩} = 80,000000$ $\text{♩} = 76,000069$ $\text{♩} = 80,000000$ $\text{♩} = 84,000084$

French Horns

Trumpets

Trombone 1

Trombone 2

Timpani

Percussion

Violins 1

Violins 2

Cello

Melody

$\text{♩} = 80,000000$
 $\text{♩} = 84,000084$ $\text{♩} = 76,000069$ $\text{♩} = 66,000069$ $\text{♩} = 80,000000$
 $\text{♩} = 72,000031$ $\text{♩} = 84,000084$

Fran - NEVER WILL I MARRY

Flute

♩ = 72,000031 ♩ = 88,000023 ♩ = 80,000000 ♩ = 80,000000

10

17 ♩ = 88,000023 ♩ = 82,000038 ♩ = 76,000069 ♩ = 88,000023 ♩ = 92,000130 ♩ = 84,000084

2

26 ♩ = 84,000000 ♩ = 84,000000 ♩ = 84,000000 ♩ = 84,000000 ♩ = 84,000000 ♩ = 84,000000 ♩ = 84,000000

4 8

44 ♩ = 84,000000 ♩ = 88,000029 ♩ = 80,000000

9

51 ♩ = 84,000000 ♩ = 88,000029 ♩ = 84,000000 ♩ = 84,000000 ♩ = 84,000000 ♩ = 84,000000

4 3

Fran - NEVER WILL I MARRY

French Horns

♩ = 72,000031

6

11 ♩ = 88,000023 ♩ = 80,000000 ♩ = 92,000130 ♩ = 80,000000

17 ♩ = 88,000023 ♩ = 82,000038 ♩ = 76,000069 ♩ = 96,000000

22 ♩ = 88,000023 ♩ = 92,000130 ♩ = 84,000084 ♩ = 92,000130 ♩ = 84,000084

27 ♩ = 76,000069 ♩ = 76,000069 ♩ = 76,000069 ♩ = 76,000069 ♩ = 76,000069 ♩ = 76,000069

33 ♩ = 88,000023 ♩ = 84,000084 ♩ = 76,000069 ♩ = 88,000023

39 ♩ = 84,000084 ♩ = 76,000069 ♩ = 88,000023

47 ♩ = 80,000000 ♩ = 88,000023 ♩ = 84,000084 ♩ = 76,000069

52 ♩ = 72,000031 ♩ = 72,000031 ♩ = 72,000031 ♩ = 72,000031 ♩ = 72,000031

V.S.

2

French Horns

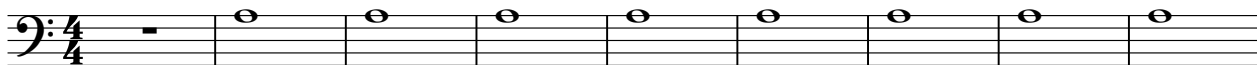
58 ♩ = 84,000084 ♩ = 87,6000069 ♩ = 72,60003169 ♩ = 80,4000084

58 ♩ = 84,000084 ♩ = 87,6000069 ♩ = 72,60003169 ♩ = 80,4000084

Fran - NEVER WILL I MARRY

Trombone 2

♩ = 72,000031



10 ♩ = 88,000023 ♩ = 80,0000130 ♩ = 80,0000023



19 ♩ = 82,000038 ♩ = 76,0000690 ♩ = 88,0000130 ♩ = 84,0000130 ♩ = 84,0000130



28 ♩ = 76,000084 ♩ = 76,0000023 ♩ = 84,000084 ♩ = 76,0000023



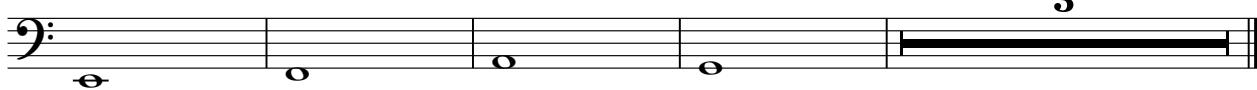
37 **7** ♩ = 84,0000130 ♩ = 76,0000023 ♩ = 80,0000023



51 ♩ = 84,0000130 ♩ = 76,0000023 ♩ = 88,000023



57 ♩ = 84,0000130 ♩ = 76,0000023 ♩ = 72,000031 ♩ = 86,000069 ♩ = 84,000084



Fran - NEVER WILL I MARRY

Timpani

$\text{♩} = 72,000031$ $\text{♩} = 88,000023$ $\text{♩} = 80,0000130$ $\text{♩} = 80,000023$ $\text{♩} = 82,000038$

10 **3** **2**

20 $\text{♩} = 76,00000000$ $\text{♩} = 88,0000130$ $\text{♩} = 84,0000130$ $\text{♩} = 84,00000000$

28 $\text{♩} = 76,000008423$ $\text{♩} = 76,0000023$ $\text{♩} = 84,000084$

6 **6** **2**

35 $\text{♩} = 76,000008423$

6 **6**

40

44 $\text{♩} = 84,00000000$ $\text{♩} = 78,000023$ $\text{♩} = 80,0000023$ $\text{♩} = 84,00000000$

3

53 $\text{♩} = 84,00008423$

6 **6** **6** **3**

57 $\text{♩} = 84,000084$ $\text{♩} = 80,0000069$ $\text{♩} = 72,0000069$ $\text{♩} = 80,000000$ $\text{♩} = 84,000084$

62

6 **6**

Keyboard

42

43

45 = 80,00076,000069 = 88,000023 ♯ = 80,00088,000023 ♯ = 84,00076,000069 = 88,000023

53 ♯ = 84,00088,000023 ♯ = 84,00088,000076,000069 = 88,000023 ♯ = 88,000069 ♯ = 84,000084

Fran - NEVER WILL I MARRY

Violins 1


The image shows a musical score for Violins 1, measures 1 through 60. The score is written in treble clef with a key signature of one sharp (F#) and a time signature of 4/4. The music is divided into systems of staves. Above each system, there are tempo markings in the form of a quarter note followed by a number, such as 72,000031, 88,000023, 80,0000130, 80,000000 = 88,000023, 82,000038 = 76,96,000000 = 88,000023, 92,000130 = 84,000084 = 92,000130 = 84,000069 = 84,000069 = 84,000084 = 88,000023, 76,000000 = 84,000084 = 76,000069, 80,000023, 84,000084 = 80,000000, 88,000023, 84,000084 = 80,000000, 84,000084, 80,000000, 84,000084, 76,000069, 72,000031 = 66,000069 = 80,000004,000084. The score includes various musical notations such as notes, rests, slurs, and ties. The first measure (measure 1) has a large number '9' above it. The score ends with a double bar line at measure 60.

Fran - NEVER WILL I MARRY


Violins 2

♩ = 72,000031 ♩ = 88,000023 ♩ = 80,000000130


9



16 ♩ = 80,000000023 ♩ = 82,000038 ♩ = 76,0000000000 ♩ = 88,00002000130

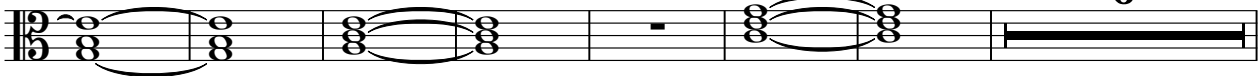


24 ♩ = 84,000000130 ♩ = 84,000084 ♩ = 76,0000000000084 ♩ = 88,0000000000023

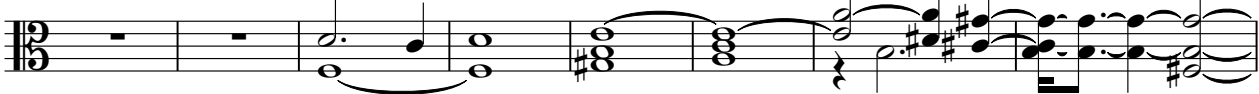


31 ♩ = 76,0000000023 ♩ = 84,000084 ♩ = 76,0000000084


6



44 ♩ = 84,0000000000 ♩ = 86,0000009 ♩ = 80,000000023 ♩ = 84,0000000000




52 ♩ = 72,0000000000063 ♩ = 70,0000000084 ♩ = 88,000000023



57 ♩ = 84,000084 ♩ = 80,00000000031 ♩ = 76,0000000000084

2



Fran - NEVER WILL I MARRY

Cello

♩ = 72,000031

10 ♩ = 88,000023 ♩ = 80,000000 = 92,000130

16 ♩ = 80,000000 = 88,000023 ♩ = 82,000038 ♩ = 76,000069 = 96,000000

22 ♩ = 88,000023 = 92,000130 ♩ = 84,000084 = 92,000130 ♩ = 84,000084 = 76,000069 = 96,000000

28 ♩ = 76,000069 = 88,000023 ♩ = 76,000069

33 ♩ = 88,000023 ♩ = 84,000084 ♩ = 76,000069 = 88,000023

39 ♩ = 84,000084 = 76,000069 = 88,000023

47 ♩ = 80,000000 ♩ = 88,000023 ♩ = 84,000084 = 76

52 ♩ = 72,000031 = 88,000023 = 76,000069 = 88,000023

57 ♩ = 84,000084 ♩ = 80,000000 ♩ = 76,000069

V.S.

2

Cello

60 ♩ = 72,000031 ♩ = 66,000069 ♩ = 80,000000 ♩ = 84,000084

The musical notation is written on a single staff with a bass clef. It consists of four measures. The first measure contains a quarter rest followed by four quarter notes. The second measure contains a quarter rest followed by four quarter notes. The third measure contains a whole rest. The fourth measure contains a whole rest. Below the staff, there are two notes: a whole note on the second line (G2) and a whole note on the first line (F2), connected by a slur.

Fran - NEVER WILL I MARRY

Melody

♩ = 72,000031

4

7

10 ♩ = 88,000023 ♩ = 80,0000130 ♩ = 80,000000

17 ♩ = 88,000023 ♩ = 82,000038 ♩ = 76,000000 ♩ = 86,000000 ♩ = 88,000023 ♩ = 92,000130

24 ♩ = 84,0000130 ♩ = 84,000000 ♩ = 84,000000 ♩ = 84,000000 ♩ = 88,000023

31 ♩ = 76,000000 ♩ = 84,000084 ♩ = 76,000000 ♩ = 88,000084

2

Melody

38

44

$\text{♩} = 84,000084$ $\text{♩} = 84,000000$ $\text{♩} = 76,88000023$ $\text{♩} = 80,000000$

50

$\text{♩} = 88,000023$ $\text{♩} = 84,000084$ $\text{♩} = 74,00000069$ $\text{♩} = 65,00000023$ $\text{♩} = 88,000023$

56

$\text{♩} = 84,000084$ $\text{♩} = 80,00000069$

60

$\text{♩} = 72,000023$ $\text{♩} = 66,000069$ $\text{♩} = 80,000000$ $\text{♩} = 84,000084$

2