

Gioacchino Antonio Rossini - The Barber Of Sevilla Lar

♩ = 225,005630

Rt. fr. I

Lft.weime

4

Rt. fr. I

Lft.weime

7

Rt. fr. I

Lft.weime

10

Rt. fr. I

Lft.weime

13

Rt. fr. I

Lft.weime

16

Rt. fr. I

Lft.weime

19

Rt. fr. I

Lft.weime

21

Rt. fr. I

Lft.weime

23

Rt. fr. I

Lft.weime

25

Rt. fr. I

Lft.weime

27

Rt. fr. I

Lft.weime

29

Rt. fr. I

Lft. weime

31

Rt. fr. I

Lft. weime

33

Rt. fr. I

Lft. weime

35

Rt. fr. I

Lft. weime

37

Rt. fr. I

Lft. weime

39

Rt. fr. I

Lft. weime

41

Rt. fr. I

Lft. weime



43

Solo "Lar

Rt. fr. I

Lft. weime



46

Solo "Lar

Rt. fr. I

Lft. weime



49

Solo "Lar

Rt. fr. I

Lft. weime



53

Solo "Lar

Rt. fr. I

Lft.weime

56

Solo "Lar

Rt. fr. I

Lft.weime

60

Solo "Lar

Rt. fr. I

Lft.weime

64

Solo "Lar

Rt. fr. I

Lft.weime

♩ = 113,000732

86

Solo "Lar

Rt. fr. I

Lft.weime



90

Solo "Lar

Rt. fr. I

Lft.weime



95

Solo "Lar

Rt. fr. I

Lft.weime



100

Solo "Lar

Rt. fr. I

Lft.weime



103

Rt. fr. I

Lft. weime

108

Rt. fr. I

Lft. weime

112

Solo "Lar

Rt. fr. I

Lft. weime

116

Solo "Lar

Rt. fr. I

Lft. weime

120

Solo "Lar

Rt. fr. I

Lft. weime

124

Solo "Lar

Rt. fr. I

Lft.weime

128

Solo "Lar

Rt. fr. I

Lft.weime

131

Solo "Lar

Rt. fr. I

Lft.weime

134

$\text{♩} = 168,001343$ $\text{♩} = 113,000732$

Solo "Lar

Rt. fr. I

Lft.weime

138

Solo "Lar

Rt. fr. I

Lft.weime

142

$\text{♩} = 105,001572 = 90,000900$ $\text{♩} = 83,000183$

Solo "Lar

Rt. fr. I

Lft.weime

147

$\text{♩} = 75,000000$ $\text{♩} = 68,000229$ $\text{♩} = 53,000256$ $\text{♩} = 225,005630$

Solo "Lar

Rt. fr. I

Lft.weime

151

Solo "Lar

Rt. fr. I

Lft.weime

156

Solo "Lar

Rt. fr. I

Lft. weime

161

Solo "Lar

Rt. fr. I

Lft. weime

165

Solo "Lar

Rt. fr. I

Lft. weime

167

Solo "Lar

Rt. fr. I

Lft. weime

185

Solo "Lar

Rt. fr. I

Lft.weime

187

Solo "Lar

Rt. fr. I

Lft.weime

$\text{♩} = 60,000000$

190

Solo "Lar

$\text{♩} = 84,000671$ $\text{♩} = \#103,0009035$ $\text{♩} = \#158,82,086883$ $\text{♩} = 207,30,060029$ $\text{♩} = 45,000111$

195

Solo "Lar

Rt. fr. I

Lft.weime

$\text{♩} = 225,005630$

199

Solo "Lar

Rt. fr. I

Lft.weime

203

Solo "Lar

Rt. fr. I

Lft.weime

207 ♩ = 113,000732 ♩ = 99,000099 ♩ = 86,000500 ♩ = 76,000076

Solo "Lar

Rt. fr. I

Lft.weime

211 ♩ = 225,005630

Solo "Lar

Rt. fr. I

Lft.weime

213

Solo "Lar

Rt. fr. I

Lft.weime

215

Solo "Lar

Rt. fr. I

Lft.weime

217

Solo "Lar

Rt. fr. I

Lft.weime

219

Solo "Lar

Rt. fr. I

Lft.weime

221

Solo "Lar

Rt. fr. I

Lft.weime

223

Solo "Lar

Rt. fr. I

Lft.weime

225

Solo "Lar

Rt. fr. I

Lft.weime

227

Solo "Lar

Rt. fr. I

Lft.weime

229

Solo "Lar

Rt. fr. I

Lft.weime

231

Solo "Lar

Rt. fr. I

Lft. weime

233

Solo "Lar

Rt. fr. I

Lft. weime

235

Solo "Lar

Rt. fr. I

Lft. weime

237

Solo "Lar

Rt. fr. I

Lft. weime

240

Solo "Lar

Rt. fr. I

Lft.weime

244

Solo "Lar

Rt. fr. I

Lft.weime

248

Solo "Lar

Rt. fr. I

Lft.weime

252

Solo "Lar

Rt. fr. I

Lft.weime

256

Solo "Lar

Rt. fr. I

Lft.weime

260

Solo "Lar

Rt. fr. I

Lft.weime

264

$\text{♩} = 128,000000$

Solo "Lar

Rt. fr. I

Lft.weime

268

Solo "Lar

Rt. fr. I

Lft.weime

272 = 128,000000

Rt. fr. I



Lft. weime



Gioacchino Antonio Rossini - The Barber Of Sevilla Lar

Solo "Lar

♩ = 225,005630

44

48

54

59

66

72

79

85

91

97

11

Solo "Lar

113

119

124

132

$\text{♩} = 168,00134\frac{2}{3} = 113,000732$

138

$\text{♩} = 105,00190\frac{2}{3} = 000900$

145

$\text{♩} = 83,000183$ $\text{♩} = 75,000000$ $\text{♩} = 68,000229$ $\text{♩} = 53,000256$

150

$\text{♩} = 225,005630$

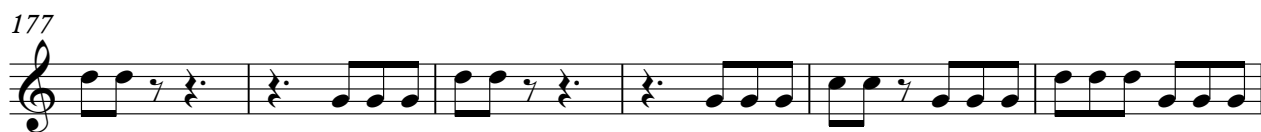
157

$\text{♩} = 113,000732$ $\text{♩} = 225,005630$


163

171

177

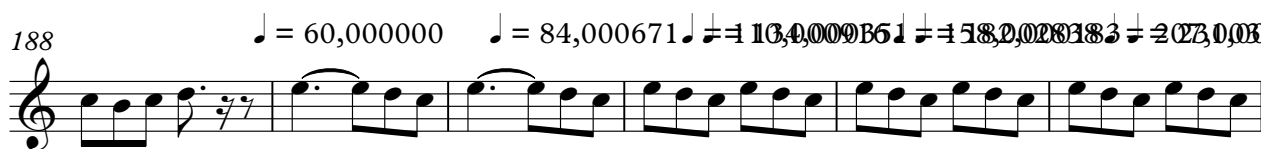


183



188

$\text{♩} = 60,000000$ $\text{♩} = 84,000671$ $\text{♩} = 104,000951$ $\text{♩} = 158,0028183$ $\text{♩} = 207,0006029$



194

$\text{♩} = 45,000111$ $\text{♩} = 225,005630$



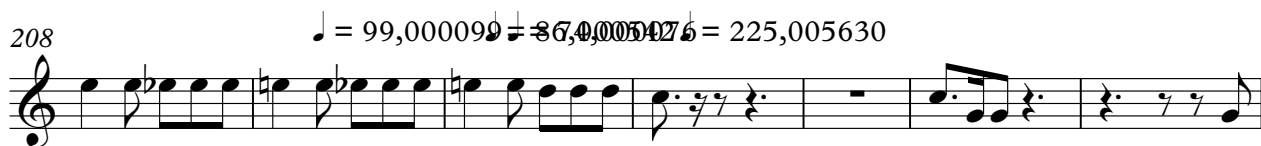
201

$\text{♩} = 113,000732$



208

$\text{♩} = 99,000099$ $\text{♩} = 87,0005076$ $\text{♩} = 225,005630$



215



221



226



231



Gioacchino Antonio Rossini - The Barber Of Sevilla Lar

Rt. fr. I

♩ = 225,005630

5

9

13

17

21

24

27

30

33

V.S.

36

39

42

46

50

55

59

64

$\text{♩} = 113,000732 \quad \text{♩} = 225,005630$

71

76

80



85



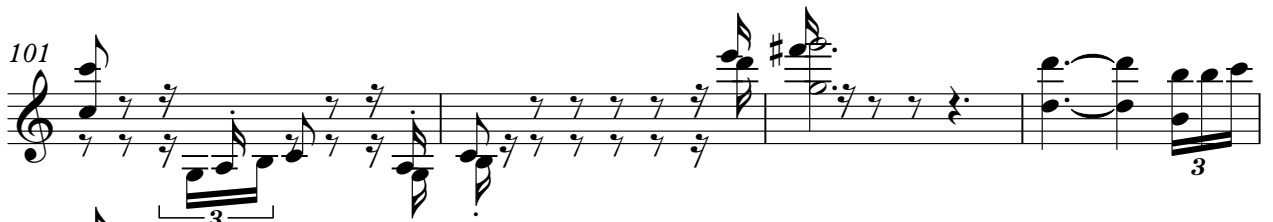
90



96



101



105



110



115



120



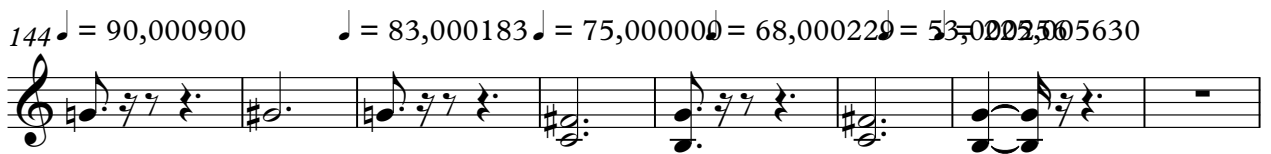
125



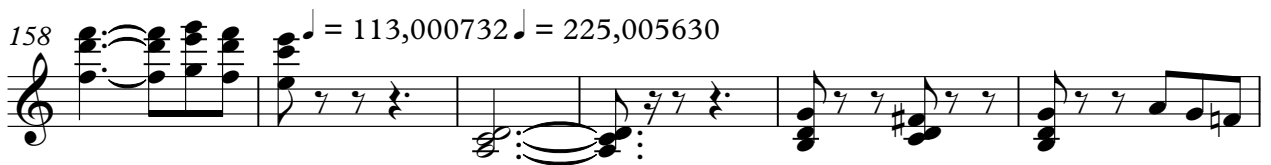
129 

133  ♩ = 168,001343 ♩ = 113,000732

138  ♩ = 105,001572

144  ♩ = 90,000900 ♩ = 83,000183 ♩ = 75,000000 ♩ = 68,000220 ♩ = 53,000250 ♩ = 50,0005630

152 

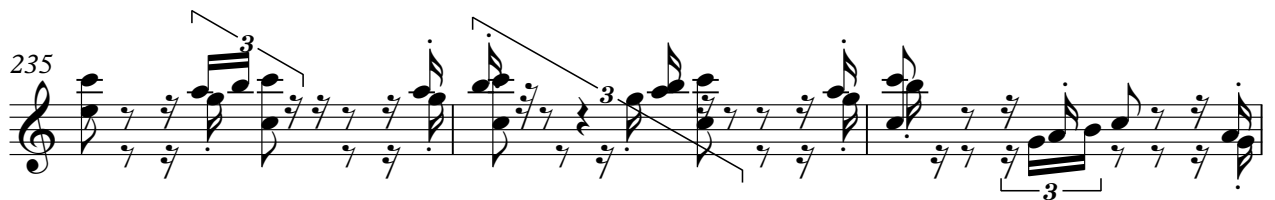
158  ♩ = 113,000732 ♩ = 225,005630

164 

167 

170 

173 



253



258



263



268



272



Gioacchino Antonio Rossini - The Barber Of Sevilla Lar

Lft.weime

♩ = 225,005630

5

10

14

18

21

24

27

30

33

V.S.

36



39



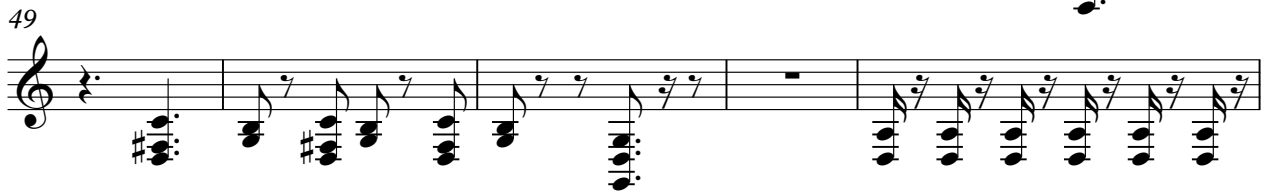
42



45



49



54




59



65

$\text{♩} = 113,000732 = 225,005630$



72



77



Musical score for 'Lft.weime' on page 3, measures 83-130. The score is written in treble clef with a key signature of one flat (B-flat). The piece features a complex rhythmic pattern, primarily consisting of eighth and sixteenth notes, often beamed together in groups. Measure 83 begins with a series of chords, each containing a dotted quarter note and an eighth note. Measures 89-94 show a more melodic line with eighth notes and rests. Measures 95-103 continue with a similar melodic pattern, including a triplet of eighth notes in measure 100. Measure 104 features a triplet of eighth notes followed by a half note and a quarter note. Measures 111-115 show a dense texture of chords, with some notes marked with a sharp sign. Measures 116-120 continue with a similar chordal texture. Measures 121-125 show a melodic line with eighth notes and rests. Measures 126-129 continue with a similar melodic pattern. Measure 130 ends with a final chord. The score concludes with the initials 'V.S.' in the bottom right corner.

Lft.weime

♩ = 168,001343 ♩ = 113,000732

134

139

♩ = 105,001572 ♩ = 90,000900

146

♩ = 83,000183 ♩ = 75,000000 ♩ = 68,000229 ♩ = 53,0005630

2

154

♩ = 113,000732

160

♩ = 225,005630

165

168

171

174

177

180

183

186

189

$\text{♩} = 60,000000 \quad \text{♩} = 84,000670 \quad \text{♩} = 91,65900183 \quad \text{♩} = 99,001453 \quad \text{♩} = 106,65900183 \quad \text{♩} = 114,31800416 \quad \text{♩} = 122,000129 = 225,005630$

197

202

113,000732

$\text{♩} = 99,000099 \quad \text{♩} = 86,000517 \quad \text{♩} = 225,005630$

207

212

215

218

221

224

227

230

233

236

239

244

249

254

259

Musical notation for measure 259, featuring a treble clef and a series of eighth notes across five measures.

264

♩ = 128,000000

Musical notation for measure 264, featuring a treble clef and a series of eighth notes with rests across five measures.

269

Musical notation for measure 269, featuring a treble clef and a series of eighth notes across five measures.

273 ♩ = 128,000000

Musical notation for measure 273, featuring a treble clef and a series of eighth notes with rests across five measures, ending with a double bar line.