

♩ = 140,000137

Percussion

Flexatone

Synth Bass

Lead 1 (Square)

♩ = 140,000137

Lead 8 (Bass + Lead)

Detailed description: This system contains five staves. The Percussion staff uses a drum set icon and has a 4/4 time signature with a tempo of 140,000137. It features a rhythmic pattern of eighth notes with 'x' marks above them. The Flexatone staff is in treble clef with a 4/4 time signature, showing a sequence of eighth notes. The Synth Bass staff is in bass clef with a 4/4 time signature, showing a sequence of eighth notes. The Lead 1 (Square) staff is in treble clef with a 4/4 time signature, showing a sequence of eighth notes. The Lead 8 (Bass + Lead) staff is in treble clef with a 4/4 time signature, showing a sequence of eighth notes with a sharp sign on the second measure.

3

Perc.

Flex.

S. Bass

Lead 1

Lead 8

Detailed description: This system contains five staves. The Perc. staff has a 4/4 time signature and a tempo of 140,000137, with a triplet of eighth notes marked with a '3' above it. The Flex. staff is in treble clef with a 4/4 time signature, showing a sequence of eighth notes. The S. Bass staff is in bass clef with a 4/4 time signature, showing a sequence of eighth notes. The Lead 1 staff is in treble clef with a 4/4 time signature, showing a sequence of eighth notes. The Lead 8 staff is in treble clef with a 4/4 time signature, showing a sequence of eighth notes with sharp signs on the second and eighth measures.

6

Perc. Flex. S. Bass Lead 1 Lead 8

This musical score block covers measures 6, 7, and 8. It features five staves: Percussion (Perc.), Flexa (Flex.), Sub Bass (S. Bass), Lead 1, and Lead 8. The Percussion staff uses a drum set notation with 'x' marks for cymbals. The Flexa staff contains eighth notes with grace notes. The S. Bass staff has a simple eighth-note bass line. Lead 1 and Lead 8 are melodic lines in treble clef, with Lead 8 starting on a lower pitch than Lead 1.

9

Perc. Flex. S. Bass Lead 1 Lead 8

This musical score block covers measures 9, 10, and 11. It features the same five staves as the previous block. The Percussion staff continues with its drum set notation. The Flexa staff maintains its eighth-note pattern with grace notes. The S. Bass staff continues with its eighth-note bass line. Lead 1 and Lead 8 are melodic lines in treble clef, with Lead 8 starting on a higher pitch than Lead 1.

11

Perc.

Flex.

S. Bass

Lead 1

Lead 8

The image shows a musical score for five parts: Percussion, Flexion, S. Bass, Lead 1, and Lead 8. The score is divided into three measures. The Percussion part (top) features a rhythmic pattern of eighth notes with 'x' marks above them, indicating muted notes. The Flexion part (second from top) consists of eighth notes with grace notes. The S. Bass part (middle) features eighth notes with grace notes. The Lead 1 part (second from bottom) consists of eighth notes with grace notes. The Lead 8 part (bottom) features a melodic line with a sharp sign and a slur. The score is marked with a double bar line at the beginning of the first measure and a double bar line at the end of the third measure.

Percussion

♩ = 140,000137

The first staff of music is in 4/4 time and contains measures 1 through 6. It features a complex rhythmic pattern with eighth and sixteenth notes, often beamed together. Above the notes, there are 'x' marks indicating specific rhythmic accents or techniques. The notes are primarily on the lower strings of the guitar.

4

The second staff of music contains measures 7 through 12. It continues the rhythmic pattern from the first staff, with similar beaming and 'x' marks above the notes.

7

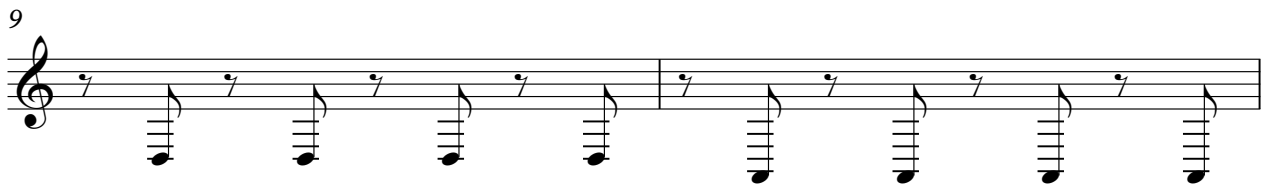
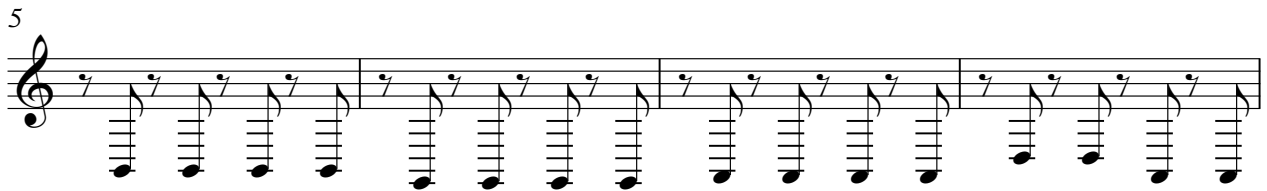
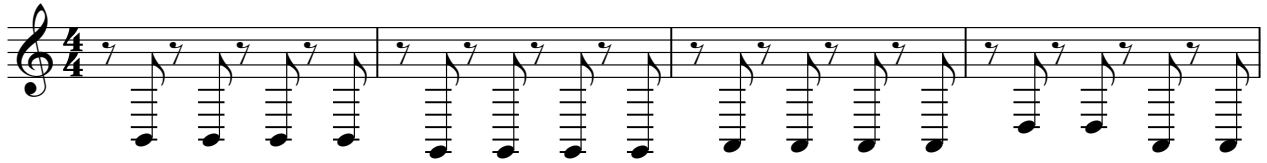
The third staff of music contains measures 13 through 18. The rhythmic complexity remains consistent with the previous staves.

10

The fourth staff of music contains measures 19 through 24. It concludes the piece with a final measure that has a whole rest, indicating the end of the percussion part.

Flexatone

♩ = 140,000137



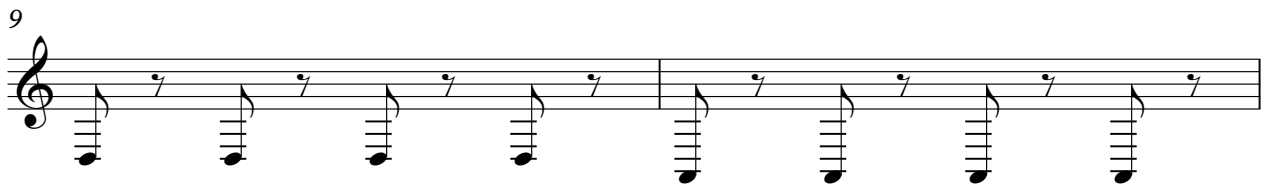
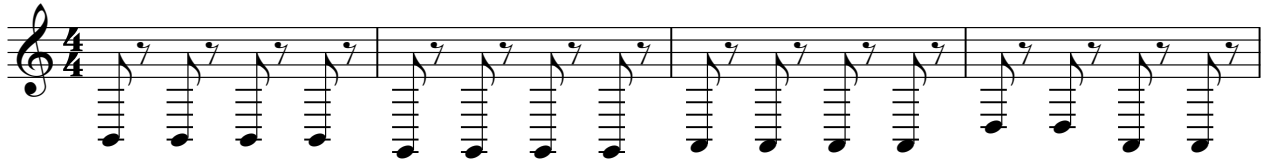
Synth Bass

♩ = 140,000137



Lead 1 (Square)

♩ = 140,000137



Lead 8 (Bass + Lead)

♩ = 140,000137

Musical notation for Lead 8 (Bass + Lead), measures 1-5. The notation is in 4/4 time and features a melodic line with eighth and quarter notes, including accidentals (sharps and naturals).

6

Musical notation for Lead 8 (Bass + Lead), measures 6-9. The notation continues the melodic line from the previous system, ending with a double bar line.

10

Musical notation for Lead 8 (Bass + Lead), measures 10-13. The notation continues the melodic line, ending with a double bar line.