

♩ = 124,000252

Oboe

Alto Saxophone

Percussion

Jazz Guitar

Acoustic Bass

Soprano

♩ = 124,000252

Bandoneon

Solo

Solo

Solo

KRIMINAL



5

Alto Sax.

Perc.

A. Bass

S.

Solo

9

Ob.
Alto Sax.
Perc.
J. Gtr.
A. Bass
S.
Band.
Solo
Solo
Solo



13

Ob.
Alto Sax.
Perc.
J. Gtr.
A. Bass
Band.
Solo
Solo
Solo

17

Ob.
Alto Sax.
Perc.
J. Gtr.
A. Bass
Band
Solo
Solo
Solo



21

Ob.
Alto Sax.
Perc.
J. Gtr.
A. Bass
Band
Solo
Solo
Solo

25

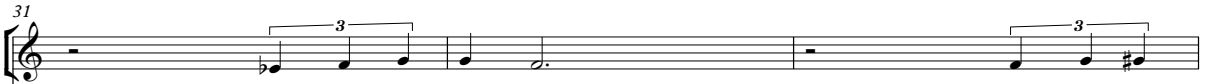
Ob. Alto Sax. Perc. J. Gtr. A. Bass S. Band. Solo Solo Solo





28

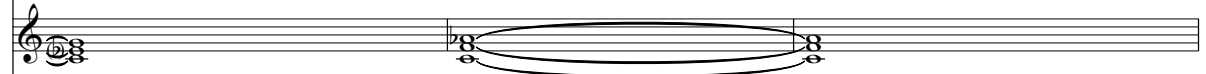
Alto Sax. Perc. A. Bass S. Solo Solo


31


Alto Sax. 

Perc. 

A. Bass 


S. 

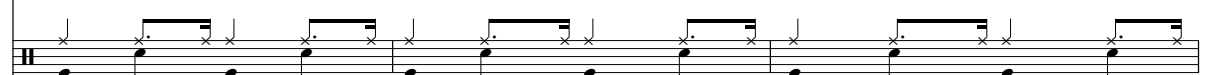
Solo 


Solo 

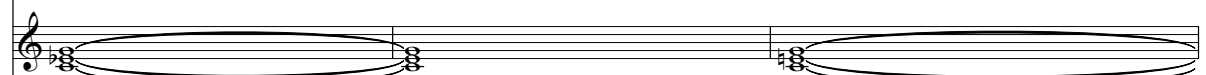



34

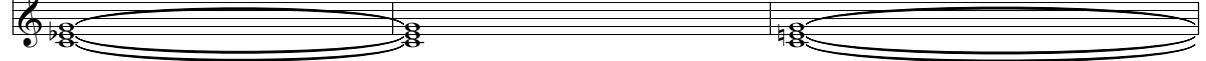
Alto Sax. 

Perc. 

A. Bass 

S. 

Solo 

Solo 



37

Alto Sax. 

Perc. 

A. Bass 

S. 

Solo 

Solo 

40

Alto Sax. 

Perc. 

A. Bass 

S. 

Solo 

Solo 



43

Ob. 

Alto Sax. 

Perc. 

J. Gtr. 

A. Bass 

S. 

Band. 

Solo 

Solo 

Solo 

47

Ob.
Alto Sax.
Perc.
J. Gtr.
A. Bass
Band.
Solo
Solo
Solo



51

Ob.
Alto Sax.
Perc.
J. Gtr.
A. Bass
Band.
Solo
Solo
Solo

55

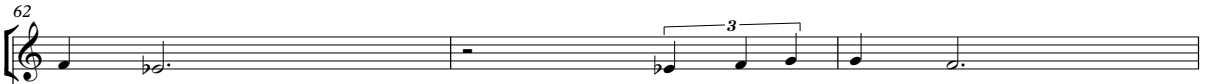
Ob.
Alto Sax.
Perc.
J. Gtr.
A. Bass
S.
Band.
Solo
Solo
Solo

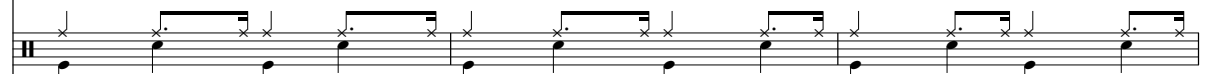


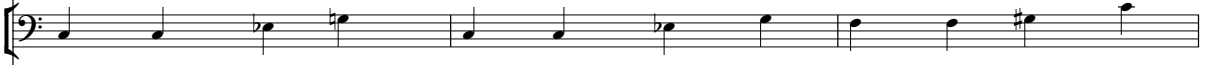
59

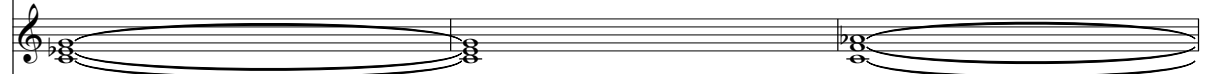
Alto Sax.
Perc.
A. Bass
S.
Solo
Solo


62

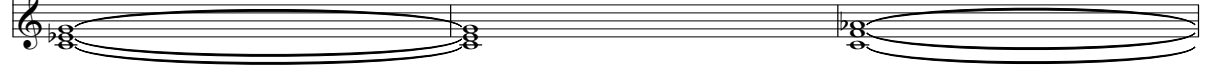
Alto Sax. 

Perc. 

A. Bass 

S. 

Solo 

Solo 



65

Alto Sax. 

Perc. 

A. Bass 

S. 

Solo 

Solo 



68

Alto Sax. 

Perc. 

A. Bass 

S. 

Solo 

Solo 

71

Alto Sax.

Perc.

A. Bass

S.

Solo

Solo



74

Ob.

Alto Sax.

Perc.

J. Gtr.

A. Bass

S.

Band.

Solo

Solo

Solo

78

Ob.

Alto Sax.

Perc.

J. Gtr.

A. Bass

Band.

Solo

Solo

Solo



82

Ob.

Alto Sax.

Perc.

J. Gtr.

A. Bass

Band.

Solo

Solo

Solo

86

Ob.
Alto Sax.
Perc.
J. Gtr.
A. Bass
Band
Solo
Solo
Solo



90

Ob.
Alto Sax.
Perc.
A. Bass
S.
Solo
Solo

93

Alto Sax. Perc. A. Bass S. Solo Solo



96

Alto Sax. Perc. A. Bass S. Solo Solo



99

Alto Sax. Perc. A. Bass S. Solo Solo

102

Alto Sax. Perc. A. Bass S. Solo Solo

This system covers measures 102 to 104. The Alto Saxophone part features a triplet of eighth notes in measure 103. The Percussion part has a consistent rhythmic pattern of eighth notes with accents. The A. Bass part plays a steady eighth-note line. The Solo parts consist of complex chordal textures with sixteenth-note runs and triplets.



105

Alto Sax. Perc. A. Bass S. Solo Solo

This system covers measures 105 to 107. The Alto Saxophone part has a triplet of eighth notes in measure 105. The Percussion part includes a sixteenth-note run in measure 105. The A. Bass part continues with eighth notes. The Solo parts feature dense chordal patterns with sixteenth-note runs.



108

Alto Sax. Perc. A. Bass S. Solo Solo

This system covers measures 108 to 110. The Alto Saxophone part has a triplet of eighth notes in measure 109. The Percussion part continues with eighth notes. The A. Bass part plays eighth notes. The Solo parts include triplet and sixteenth-note patterns.

110

Ob.

Alto Sax.

Perc.

J. Gtr.

A. Bass

S.

Band.

Solo

Solo

Solo

Oboe

♩ = 124,000252

10

15

20

25

16

45

50

55

58

16

75



80



85



89



20

Alto Saxophone

♩ = 124,000252

2

8

13

18

23

28

35

41

46

51

V.S.

Percussion

♩ = 124,000252

Staff 1: Percussion notation. The staff contains a series of rhythmic patterns represented by 'x' marks above the staff and notes below. The first measure is a whole rest. The subsequent measures show a sequence of eighth notes and quarter notes, with 'x' marks indicating specific rhythmic events.

6

Staff 2: Percussion notation. Similar to staff 1, it features a sequence of rhythmic patterns with 'x' marks and notes. The first measure starts with a whole rest.

11

Staff 3: Percussion notation. This staff introduces a more complex pattern with a half note followed by quarter notes, and includes some 'x' marks with circles around them.

17

Staff 4: Percussion notation. Features a sequence of quarter notes and eighth notes, with 'x' marks and some circled 'x' marks.

24

Staff 5: Percussion notation. Shows a sequence of quarter notes and eighth notes, with 'x' marks and circled 'x' marks.

29

Staff 6: Percussion notation. Similar to staff 1, it features a sequence of rhythmic patterns with 'x' marks and notes.

34

Staff 7: Percussion notation. Shows a sequence of rhythmic patterns with 'x' marks and notes.

39

Staff 8: Percussion notation. Features a sequence of rhythmic patterns with 'x' marks and notes, ending with a half note.

44

Staff 9: Percussion notation. Shows a sequence of quarter notes and eighth notes, with 'x' marks and circled 'x' marks.

50

Staff 10: Percussion notation. Features a sequence of quarter notes and eighth notes, with 'x' marks and circled 'x' marks.

V.S.

57

62

67

72

77

84

90

95

100

105

Percussion

108

Musical notation for Percussion, measure 108. The notation consists of two staves. The upper staff features a series of rhythmic patterns: a quarter note followed by two eighth notes, a quarter note followed by two eighth notes, a quarter note followed by two eighth notes, a quarter note followed by two eighth notes, a quarter note followed by two eighth notes, a quarter note followed by two eighth notes, a quarter note followed by two eighth notes, and a quarter note followed by two eighth notes. The lower staff features a series of quarter notes: a quarter note, a quarter note, a quarter note, a quarter note, a quarter note, a quarter note, a quarter note, and a quarter note. The notation is written in a standard musical staff format with a treble clef and a key signature of one flat.

Jazz Guitar

♩ = 124,000252

11

14

17

21

25 **18**

46

49

53

56 **18**

76



79



82



86



89



Acoustic Bass

♩ = 124,000252



V.S.

55



60



66



72



77



82



87



92



98

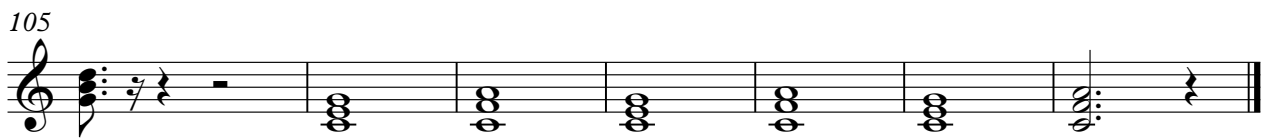
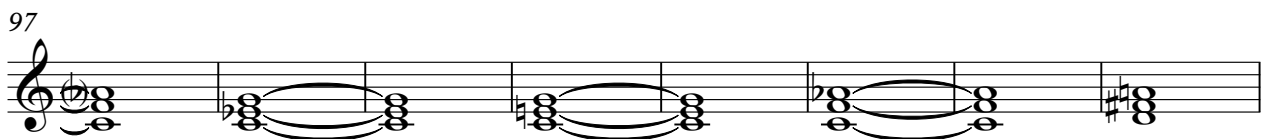
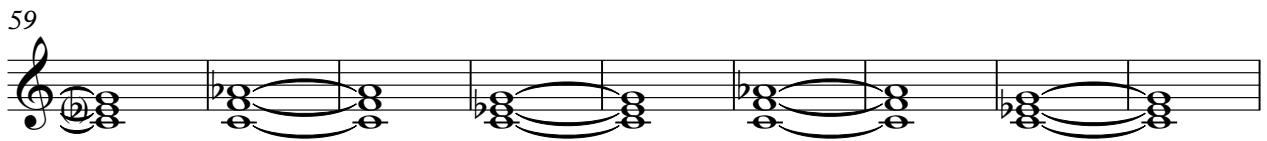
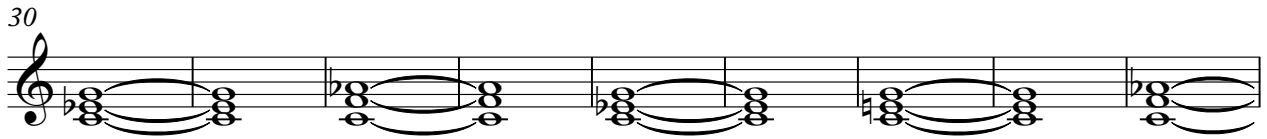
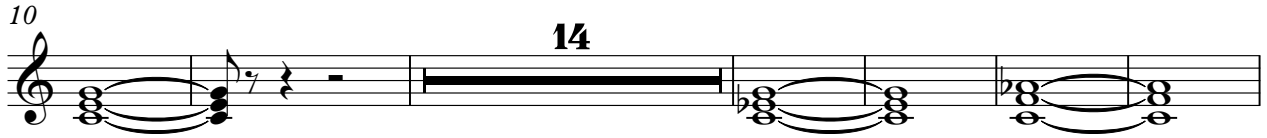


104



Soprano

♩ = 124,000252



Bandoneon

♩ = 124,000252

11

14

17

21

24

18

44

Measures 44-46: Bass clef, eighth-note chords and quarter notes.

47

Measures 47-49: Bass clef, eighth-note chords and quarter notes.

50

Measures 50-53: Grand staff, eighth-note chords and quarter notes.

54

Measures 54-56: Grand staff, eighth-note chords and quarter notes.

57

Measures 57-59: Bass clef, eighth-note chords and quarter notes. Measure rest of 18 measures.

78

Measures 78-80: Bass clef, eighth-note chords and quarter notes.

81

Measures 81-83: Bass clef, eighth-note chords and quarter notes.

85

Measures 85-87: Grand staff, eighth-note chords and quarter notes.

88

21

21

Solo

♩ = 124,000252

4

6

8

10

14

18

21

25

27

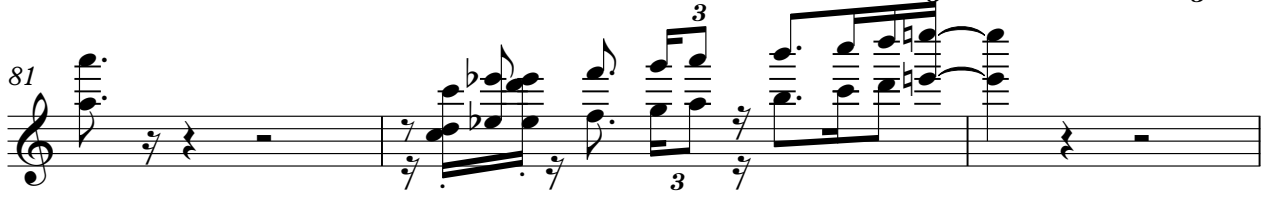
V.S.

Solo

77



81



84



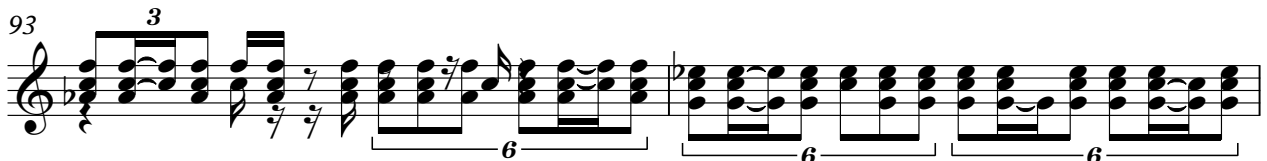
88



91



93



95



97



99



101



103

6 6 3 6

106

6 6 6 6

108

3 3 6 3

110

6 6 6

Solo

♩ = 124,000252

11



15

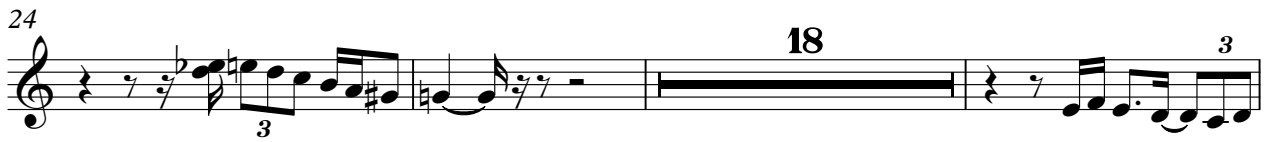


19



24

18



45



49



53



56

18



2

Solo

76

3

80

3

84

3

88

21

Solo

♩ = 124,000252
KRIMINAL

10



15



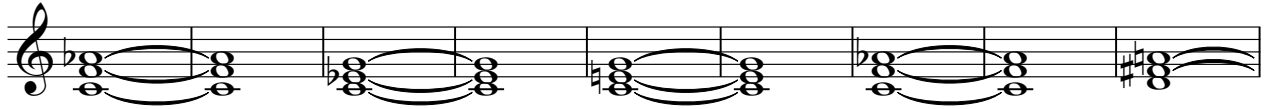
21



25



32



41



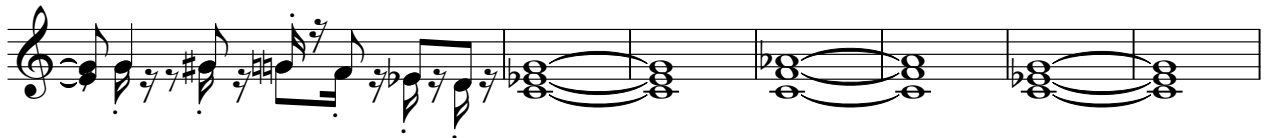
47



53



57



64



V.S.

73



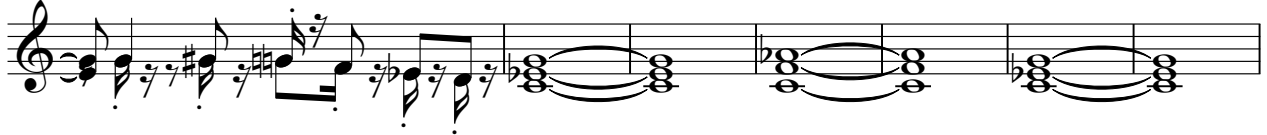
79



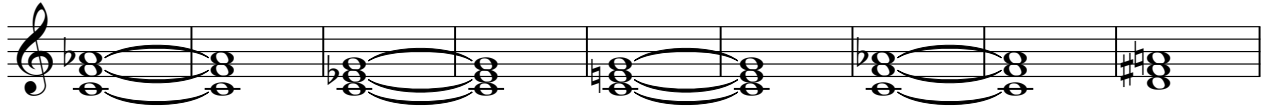
85



89



96



105

