

Jay Walker - Equinox

♩ = 145,000031

SubTractor 1

3

SubTractor 1

5

SubTractor 1

7

SubTractor 1

9

SubTractor 1

10

SubTractor 1

11

SubTractor 1

12

SubTractor 1

13

SubTractor 1

14

SubTractor 1

SubTractor 1 Musical staff 15-16: Treble clef, key signature of one sharp (F#). Staff 15 contains a series of eighth notes with stems pointing down, including a sharp sign. Staff 16 continues the sequence.

SubTractor 1 Musical staff 16-21: Treble clef, key signature of one sharp (F#). Staff 16 contains a series of eighth notes with stems pointing down, including a sharp sign. Staff 17-21 are empty.

SubTractor 1 Musical staff 21-29: Treble clef, key signature of one sharp (F#). Staff 21 contains a series of eighth notes with stems pointing down, including a sharp sign. Staff 22-29 are empty.

SubTractor 1 Musical staff 29-37: Treble clef, key signature of one sharp (F#). Staff 29-37 are empty.

SubTractor 1 Musical staff 37-45: Treble clef, key signature of one sharp (F#). Staff 37-45 are empty.

SubTractor 1 Musical staff 45-53: Treble clef, key signature of one sharp (F#). Staff 45-53 are empty.

SubTractor 1 Musical staff 53-61: Treble clef, key signature of one sharp (F#). Staff 53-61 are empty.

SubTractor 1 Musical staff 61-69: Treble clef, key signature of one sharp (F#). Staff 61-69 are empty.

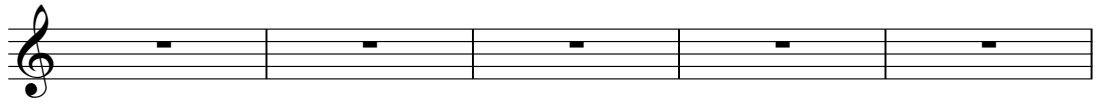
SubTractor 1 Musical staff 69-77: Treble clef, key signature of one sharp (F#). Staff 69-77 are empty.

SubTractor 1 Musical staff 77-85: Treble clef, key signature of one sharp (F#). Staff 77-85 are empty.

SubTractor 1 Musical staff 85-93: Treble clef, key signature of one sharp (F#). Staff 85-93 are empty.

93

SubTractor 1



98

SubTractor 1

