

Johann Sebastian Bach - Invention Nr 13

♩ = 175,003647

A.PIANO 1

A.PIANO 1

This system contains the first two measures of the piece. The right hand (A.PIANO 1) begins with a quarter rest, followed by a series of eighth and sixteenth notes. The left hand (A.PIANO 1) starts with a quarter rest, then plays a sequence of eighth notes, including a sharp sign (F#) in the second measure.

4

A.PIANO 1

A.PIANO 1

This system contains measures 3 and 4. The right hand (A.PIANO 1) has a quarter rest in measure 3, followed by eighth notes in measure 4. The left hand (A.PIANO 1) continues with eighth notes, including a sharp sign (F#) in measure 4.

7

A.PIANO 1

A.PIANO 1

This system contains measures 5 and 6. The right hand (A.PIANO 1) features eighth notes in measure 5 and a quarter note in measure 6. The left hand (A.PIANO 1) plays eighth notes, with a slur over the final two measures.

9

A.PIANO 1

A.PIANO 1

This system contains measures 7 and 8. The right hand (A.PIANO 1) has eighth notes in measure 7 and a quarter note in measure 8. The left hand (A.PIANO 1) continues with eighth notes.

11

A.PIANO 1

A.PIANO 1

This system contains measures 9 and 10. The right hand (A.PIANO 1) has eighth notes in measure 9, a quarter rest in measure 10, and eighth notes in measure 11. The left hand (A.PIANO 1) continues with eighth notes.

14

A.PIANO 1

A.PIANO 1

17

A.PIANO 1

A.PIANO 1

19

A.PIANO 1

A.PIANO 1

21

A.PIANO 1

A.PIANO 1

24

A.PIANO 1

A.PIANO 1

27

A.PIANO 1

A.PIANO 1

29

A.PIANO 1

A.PIANO 1

32

A.PIANO 1

A.PIANO 1

35

A.PIANO 1

A.PIANO 1

38

A.PIANO 1

A.PIANO 1

40

A.PIANO 1

A.PIANO 1

42

A.PIANO 1

A.PIANO 1

44

A.PIANO 1

A.PIANO 1

46

A.PIANO 1

A.PIANO 1

48

A.PIANO 1

$\text{♩} = 160,000000$

A.PIANO 1

49

A.PIANO 1

$\text{♩} = 148,001968$     $\text{♩} = 130,002380$

A.PIANO 1

Johann Sebastian Bach - Invention Nr 13

A.PIANO 1

♩ = 175,003647

5

8

11

15

18

21

25

29

33

V.S.

37



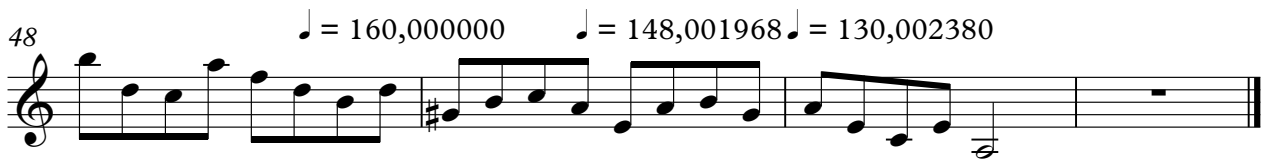
41



45



48



Johann Sebastian Bach - Invention Nr 13

A.PIANO 1

♩ = 175,003647

5

8

11

14

17

20

23

27

30

V.S.

