

Johann Sebastian Bach - Menuet for Anna

♩ = 131,971390

FLUTE

OBOE

BASSOON

STRINGS

STRINGS

STRINGS

A.PIANO 1

A.PIANO 1



7

STRINGS

STRINGS

STRINGS

A.PIANO 1

A.PIANO 1

12

STRINGS

STRINGS

STRINGS

A.PIANO 1

A.PIANO 1



17

OBOE

BASSOON

STRINGS

STRINGS

STRINGS

A.PIANO 1

A.PIANO 1

21

OBOE

BASSOON

STRINGS

STRINGS

STRINGS

A.PIANO 1

A.PIANO 1



25

FLUTE

OBOE

BASSOON

STRINGS

STRINGS

STRINGS

A.PIANO 1

A.PIANO 1

29

FLUTE

OBOE

BASSOON

STRINGS

STRINGS

STRINGS

A.PIANO 1

A.PIANO 1



33

FLUTE

OBOE

BASSOON

STRINGS

STRINGS

STRINGS

A.PIANO 1

A.PIANO 1

37

STRINGS

STRINGS

STRINGS

A.PIANO 1

A.PIANO 1



41

STRINGS

STRINGS

STRINGS

A.PIANO 1

A.PIANO 1



46

STRINGS

STRINGS

STRINGS

A.PIANO 1

A.PIANO 1

50

FLUTE

OBOE

BASSOON

STRINGS

STRINGS

STRINGS

A.PIANO 1

A.PIANO 1



53

FLUTE

OBOE

BASSOON

STRINGS

STRINGS

STRINGS

A.PIANO 1

A.PIANO 1

56

FLUTE

OBOE

BASSOON

STRINGS

STRINGS

STRINGS

A.PIANO 1

A.PIANO 1



60

FLUTE

OBOE

BASSOON

STRINGS

STRINGS

STRINGS

A.PIANO 1

A.PIANO 1

63 $\text{♩} = 129,886429$ $\text{♩} = 127,973244$ $\text{♩} = 125,605522$

FLUTE

OBOE

BASSOON

STRINGS

STRINGS

STRINGS

A.PIANO 1

A.PIANO 1



65 $\text{♩} = 116,086716$ $\text{♩} = 109,508710$ $\text{♩} = 95,978500$

FLUTE

OBOE

BASSOON

STRINGS

STRINGS

STRINGS

A.PIANO 1

A.PIANO 1

FLUTE

Johann Sebastian Bach - Menuet for Anna

♩ = 131,971390

26

3

30

3

35

16

3

55

3

59

3

63

♩ = 129,881279732125,6011220867109,650929589718500

3

OBOE

Johann Sebastian Bach - Menuet for Anna

♩ = 131,971390

18

23

32

16

53

3

57

3

3

62

♩ = 129,886429 = 127,912244 = 125,938059

65

♩ = 116,086716 ♩ = 109,650925 ♩ = 99,968010 ♩ = 95,978500

3

BASSOON

Johann Sebastian Bach - Menuet for Anna

♩ = 131,971390

18



24



30



35

16

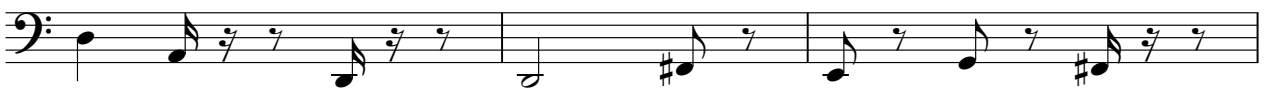


56



62

♩ = 129,886420 = 127,913340



65 ♩ = 116,086716 ♩ = 109,959026 ♩ = 95,978500

3



Johann Sebastian Bach - Menuet for Anna

STRINGS

♩ = 131,971390

2

7

12

17

22

27

32

38

43

47

V.S.

2

STRINGS

52

55

59

62

♩ = 129,8864297,9732145,60552216,086709650925,968010 ♩ = 95,978500

64

STRINGS

Johann Sebastian Bach - Menuet for Anna

♩ = 131,971390

2

9

15

22

28

34

39

44

48

53

V.S.

2

STRINGS

57

Musical notation for strings, measures 57-61. The notation is in bass clef with a key signature of one sharp (F#). Measure 57: quarter note F#4, eighth notes G4, A4, B4, quarter rest. Measure 58: quarter note C5, eighth notes B4, A4, G4, quarter rest. Measure 59: quarter note A4, eighth notes G4, F#4, quarter rest. Measure 60: quarter note G4, eighth notes F#4, E4, quarter rest, followed by a triplet of eighth notes (F#4, G4, A4). Measure 61: quarter note A4, eighth notes G4, F#4, quarter rest.

62

Musical notation for strings, measures 62-63. The notation is in bass clef with a key signature of one sharp (F#). Measure 62: quarter note F#4, eighth notes G4, A4, B4, quarter rest, followed by a slur over eighth notes C5, B4, A4, G4, quarter rest. Measure 63: quarter note A4, eighth notes G4, F#4, quarter rest, followed by a slur over eighth notes G4, F#4, E4, quarter rest.

64 ♪ = 129,8864227,973245,605522 ♪ = 110,98670625 ♪ = 99,908,078500

Musical notation for strings, measures 64-66. The notation is in bass clef with a key signature of one sharp (F#). Measure 64: quarter note F#4, eighth notes G4, A4, B4, quarter rest, followed by a triplet of eighth notes (C5, B4, A4). Measure 65: quarter note A4, eighth notes G4, F#4, quarter rest, followed by a triplet of eighth notes (G4, F#4, E4). Measure 66: quarter note A4, eighth notes G4, F#4, quarter rest, followed by a final triplet of eighth notes (G4, F#4, E4).

2

STRINGS

64 ♩ = 129,886279732445,605502867109,6509,258010 = 95,978500

A musical staff in bass clef with a key signature of one sharp (F#). The staff contains a sequence of notes with fret numbers written above them: 1, 2, 3, 4, 5, 6, 7, 8, 9, 10. The notes are grouped into a triplet, indicated by a '3' above the staff. The notes are: G2 (1), A2 (2), B2 (3), C3 (4), D3 (5), E3 (6), F#3 (7), G3 (8), A3 (9), B3 (10). The staff ends with a double bar line.

Johann Sebastian Bach - Menuet for Anna

A.PIANO 1

♩ = 131,971390

2

10

17

25

33

39

46

51

58

64 = 129,8364279731245,6051126,086709,650927968010 = 95,978500

3

Johann Sebastian Bach - Menuet for Anna

A.PIANO 1

♩ = 131,971390

2

8

15

21

27

33

39

45

50

56

V.S.

2

A.PIANO 1

♩ = 129,886429 = 127,973254605522

62



65 ♩ = 116,086716 ♩ = 109,650925 ♩ = 99,968010 ♩ = 95,978500

